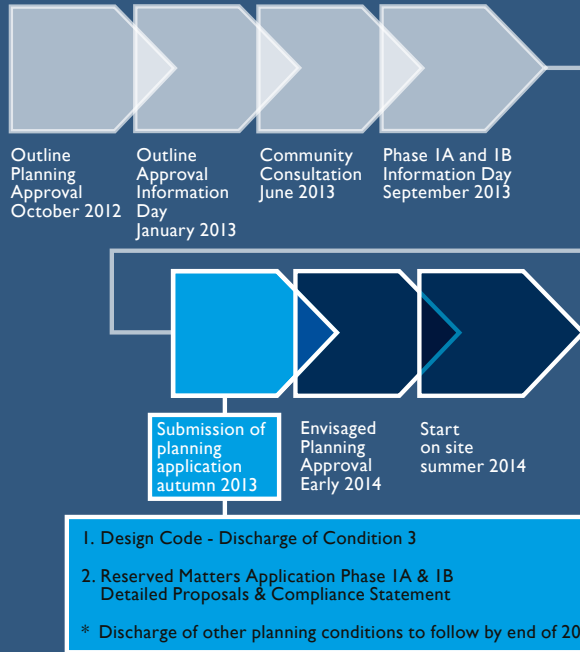


# THE WAY FORWARD



## KEY CHANGES AS A RESULT OF FEEDBACK FROM CONSULTATION

- Realignment of the bus loop from the eastern and northern perimeter of the development to within the site to assist in the creation of a lower density and softer edge to the countryside
- Realignment of streets to the northeast to improve connectivity to the Neighbourhood Centre and Henry Beaufort School
- Inclusion of a new pedestrian footpath and cycleway to the northern boundary improving connections between Headbourne Worthy and Henry Beaufort School
- Reconfiguration of public space to improve connectivity between the school, neighbourhood centre and the surrounding residential parcels
- Repositioning of the neighbourhood play area to a location closer to the proposed primary school and on a north-south pedestrian route linking the other play areas
- Change of Andover Avenue and Stoney Lane junction from signalised junction to a designed low kerb 'square-about'
- Footpath and cycle link to Worthy Road will now run via the existing link to Courtenay Road instead of to the rear of the houses in Colley Close



Sketch of the south facing meadows (Phase IA)

Thank you for attending the CALA Homes Information Day for Phase One of Barton Farm.

This event is to enable the local community to find out more about the reserved matters planning application for Phase Ia and Ib before it is submitted to the Local Planning Authority in the autumn of 2013.

To view all of the material displayed at today's event, please visit our website: [www.bartonfarmwinchester.co.uk](http://www.bartonfarmwinchester.co.uk).

If you are interested in receiving regular updates on the progress of Barton Farm, please register for updates on the home page of our website. In the meantime, should you have any questions for the project team, please ask a team member today or you can email us at: [bartonfarm@cala.co.uk](mailto:bartonfarm@cala.co.uk)

# INFORMATION DAY BARTON FARM



## 18 SEPTEMBER 2013





# PHASE IA



## KEY

- 1 Footpath and cycle link to Worthy Road will now run via the existing link to Courtenay Road instead of to the rear of the houses in Colley Close
- 2 Pedestrian crossing across Andover Road to the south of Stoney Lane
- 3 Shared surface footpath and cycleway incorporated within The Avenue
- 4 Temporary signalised junction provides vehicular access to Phase IA
- 5 Traffic calmed squareabout at junction of Stoney Lane and The Avenue
- 6 Local Equipped Area of Play (LEAP) and opportunities for informal play
- 7 Existing trees on Andover Road retained
- 8 Additional trees and shrub planting to boundary
- 9 Green landscape finger incorporating water attenuation areas and 'off-line' ponds
- 10 Apartment buildings

# PHASING & DELIVERY

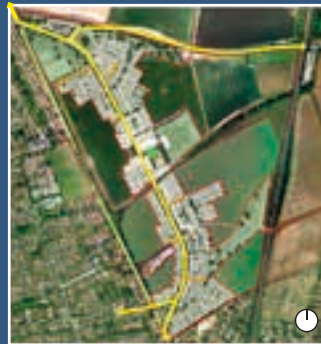
\* Approximate timescale shown



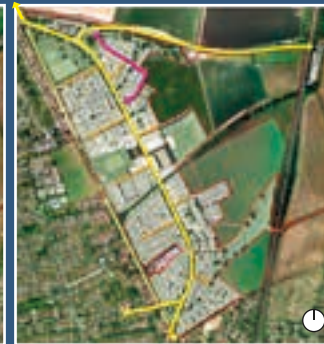
Start on site - 2014 \*



Completion of Phase IA & IB - 2017 \*



Completion of Phase 2A & 2B - 2019 \*



Completion of Phase 3A & 3B - 2021 \*



Completion of Phase 4A & 4B - 2023 \*



Completion of Phase 5A & 5B - 2025 \*

# PHASE IB



## KEY

- 1 Shared surface footpath and cycleway incorporated within The Avenue
- 2 Local Equipped Area of Play (LEAP) and opportunities for informal play
- 3 Green landscape finger incorporating water attenuation areas
- 4 Temporary signalised junction from Andover Road provides vehicular access to Phase IB
- 5 Additional trees and shrub planting to boundary
- 6 Apartment buildings

## PHASING & DELIVERY KEY

- Primary vehicular access through/around site
- Vehicular/pedestrian/cycle access to dwellings along Andover Road
- Temporary construction access to site
- Pedestrian/cycle access only in front of Henry Beaufort School
- Vehicular access points to development
- Neighbourhood Centre
- Pedestrian link between phases to access school
- Bus route through site
- Primary School