



# Newington Residences

The Gatehouse floor plan



Stock photography




# A stylish home in a sought-after setting






# Newington Residences


## The development




**The Anderson**  
4 bedroom townhouse  
Plots 23, 24, 25, 26, 27  
Separate garage




**The Blake**  
5 bedroom semi-detached townhouse  
Plots 42, 43, 44, 45, 46, 47  
Integral garage



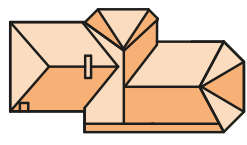
**The Bovell**  
3 bedroom mews home  
Plot 22  
Integral garage



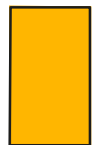
**The Chaplin**  
3 bedroom townhouse  
Plots 29, 30, 31, 32, 33, 34, 35, 36  
Carport



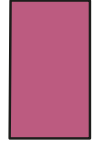
**The Evans**  
5 bedroom townhouse  
Plot 37  
With garage



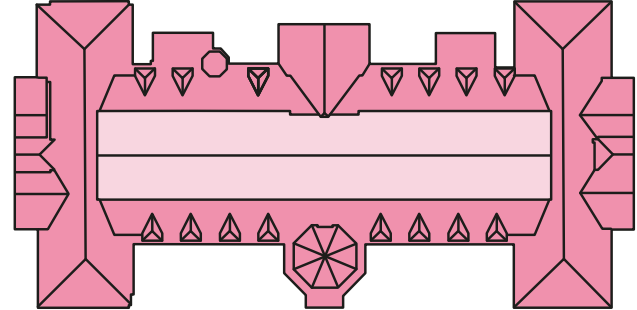
**The Gatehouse**  
2 bedroom home  
Plot 48



**The Pechey**  
5 bedroom townhouse  
Plot 28  
With integral garage



**The Thorne**  
5 bedroom townhouse  
Plots 38, 39, 40, 41  
With garage



**The Clocktower**  
1, 2 & 3 bedroom apartments  
Plots 1, 2, 3, 4, 5, 6, 7, 8, 9, 10, 11, 12, 13, 14, 15, 16, 17, 18, 19, 20, 21



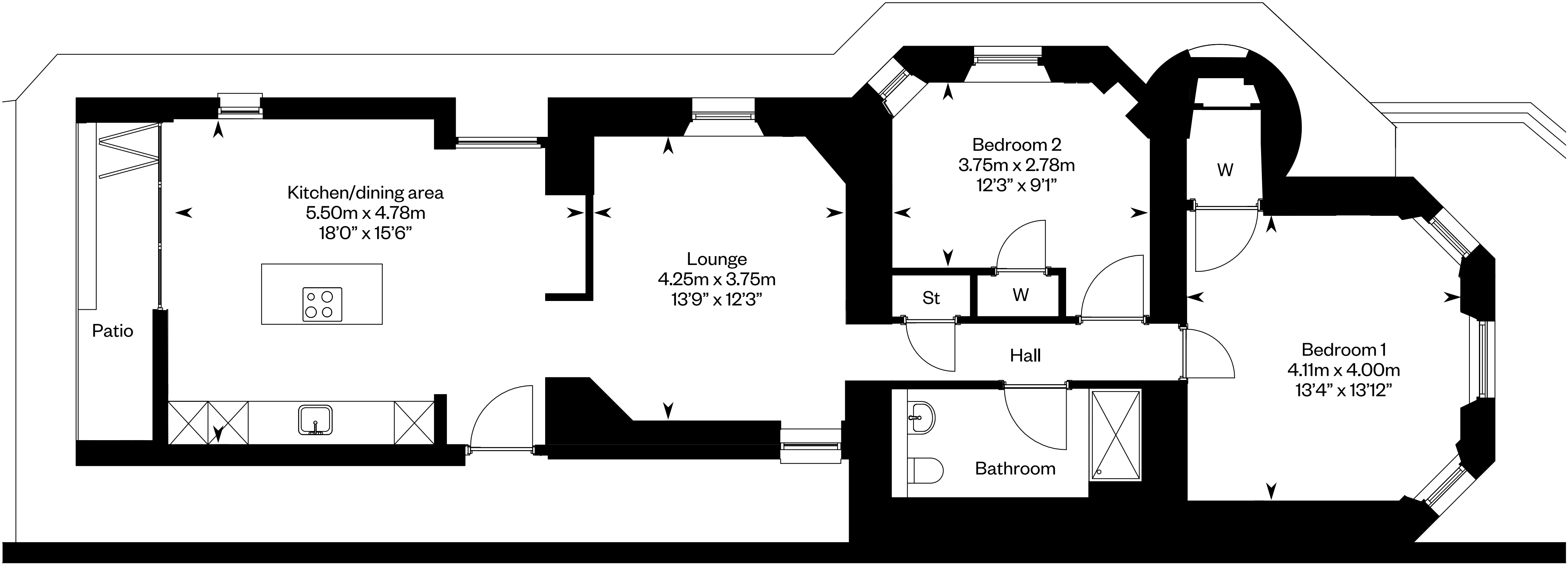
IMPORTANT NOTICE TO CUSTOMERS: The Consumer Protection from Unfair Trading Regulations 2008. Cala Homes (West) Limited operates a policy of continual product development and the site layout shown in this brochure insert is indicative only. Information contained is accurate at time of going to press on 13.07.23. See the main brochure for the full Consumer Protection statement.

View our interactive siteplan for our latest availability



# The Gatehouse

Plot 48 - 2 bedroom home







Stook photography



NEWINGTON  
RESIDENCES



# Welcome to your new home

Newington Residences,  
James Gall Wynd,  
Edinburgh, EH16 5LZ

[Click here to arrange your viewing](#)



IMPORTANT NOTICE TO CUSTOMERS: The Consumer Protection from Unfair Trading Regulations 2008. Cala Homes (East) Limited operates a policy of continual product development and the specifications outlined in this brochure are indicative only. Cala reserves the right to implement minor changes to the sizes and specifications shown on any plans or drawings in this brochure without warning. Where alterations to the design, construction or materials to be used in the construction of the property would materially alter the internal floor space, appearance or market value of the property, we will ensure that these changes are communicated to potential purchasers. Whilst these particulars are prepared with all due care for the convenience of intending purchasers, the information is intended as a guide. The computer generated images and photographs do not necessarily represent the actual finishings/elevation or treatments, landscaping, furnishings and fittings at this development. Floor plans, dimensions and specifications are correct at the time of print. The illustrated location map is a general guide only. Please note that distances and timings referred to in this brochure are approximate and sourced from Google Maps and nationalrail.co.uk. For information relating to weather in the area of this development, please refer to the Meteorological Office (www.metoffice.gov.uk). Nothing contained in this brochure shall constitute or form part of any contract. Information contained in this brochure is accurate at time of going to press on 13.07.23. Cala (East) Limited, registered in Scotland company number SC053746. Registered office: Johnstone House, 52-54 Rose Street, Aberdeen AB10 1HA. Agent of Cala Management Limited.