



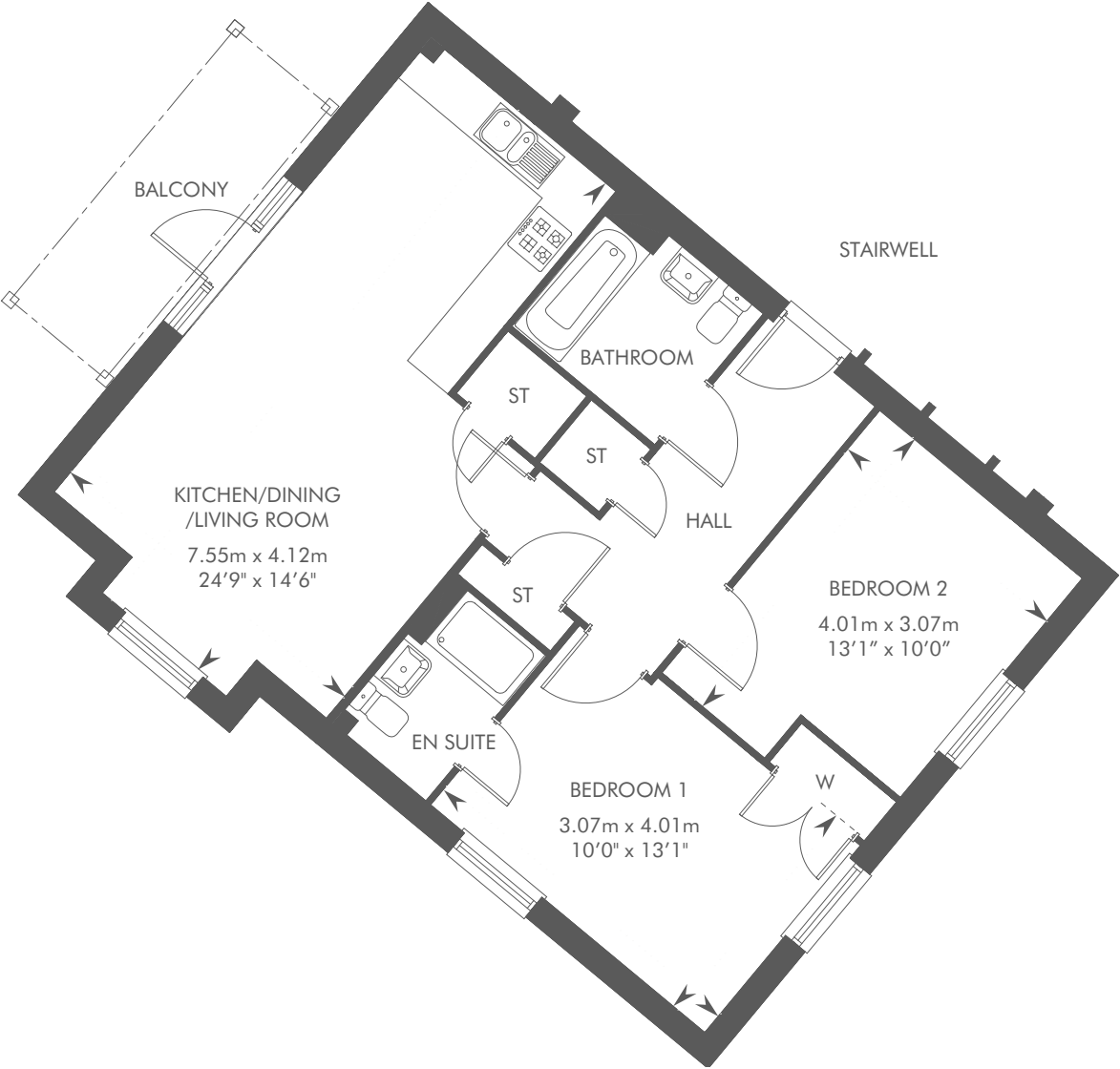
Computer generated image of Luton Apartments

LUTTON APARTMENTS

1 & 2 BEDROOM APARTMENTS

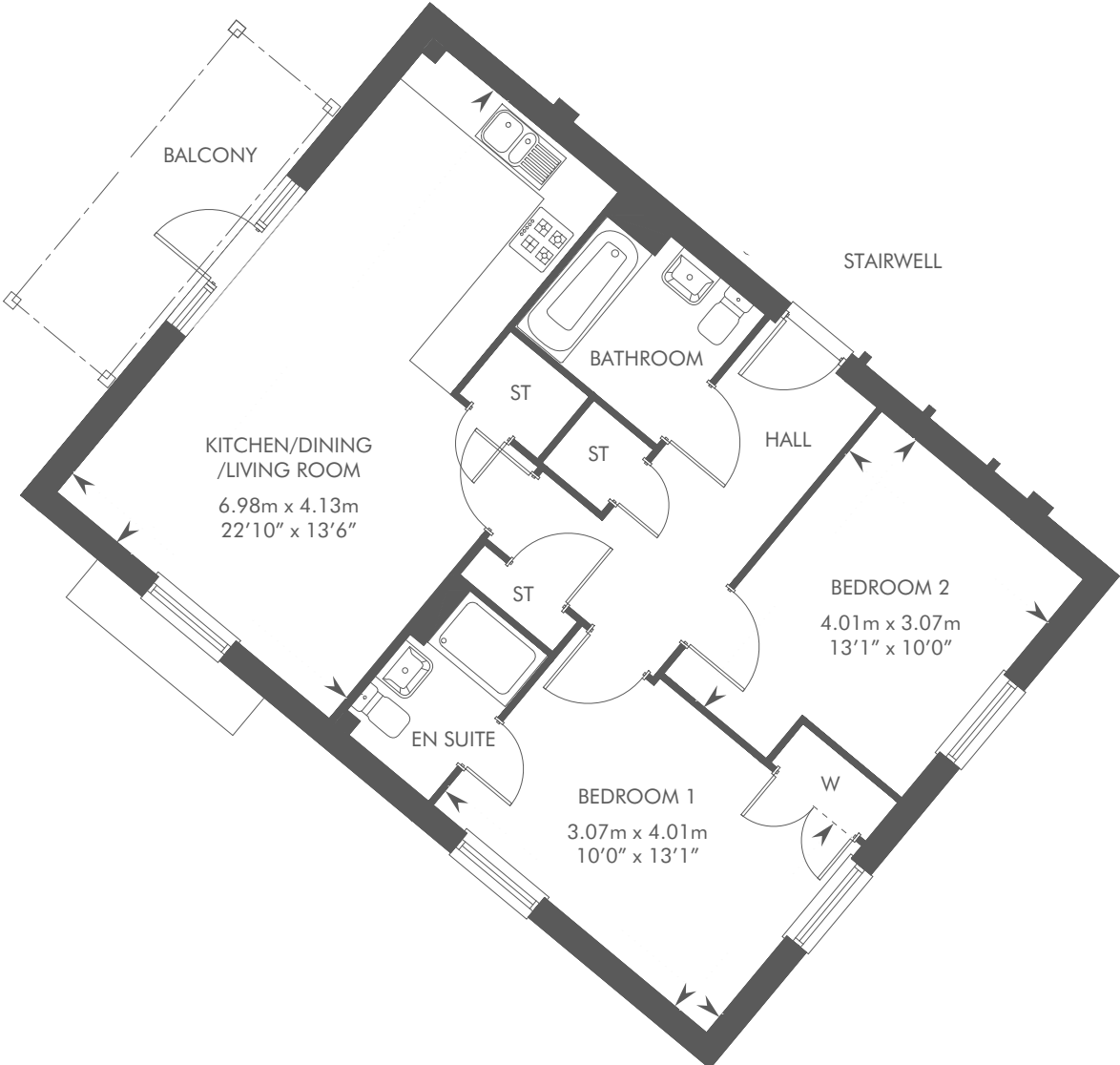


LUTTON APARTMENTS
PLOT 5 – GROUND FLOOR
PLOT 6 – FIRST FLOOR



Please ask your Sales Consultant for further details. ST: Store cupboard. W: Wardrobe. A/C: Airing cupboard.

LUTTON APARTMENTS
PLOT 7 – SECOND FLOOR



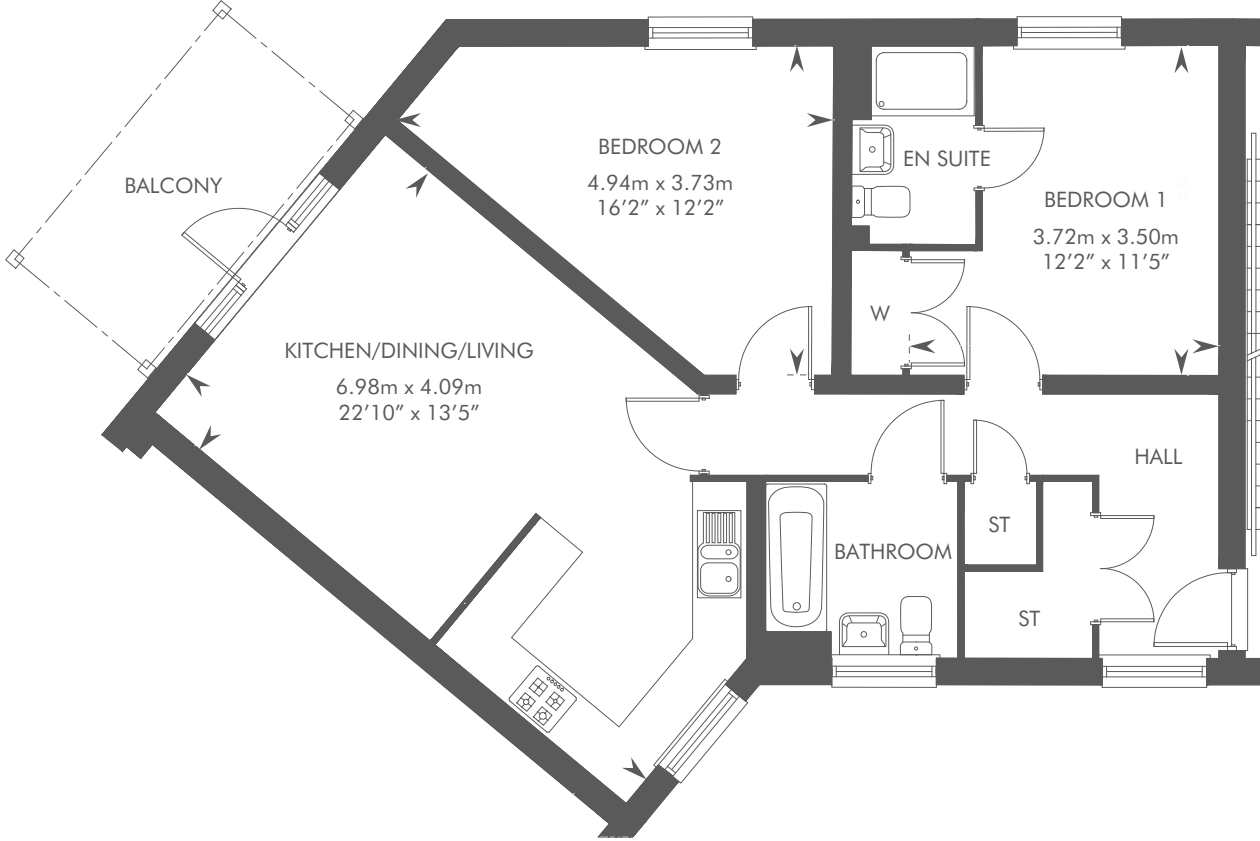
Please ask your Sales Consultant for further details. ST: Store cupboard. W: Wardrobe. A/C: Airing cupboard.

LUTTON APARTMENTS
PLOT 8 – FIRST FLOOR
PLOT 9 – SECOND FLOOR



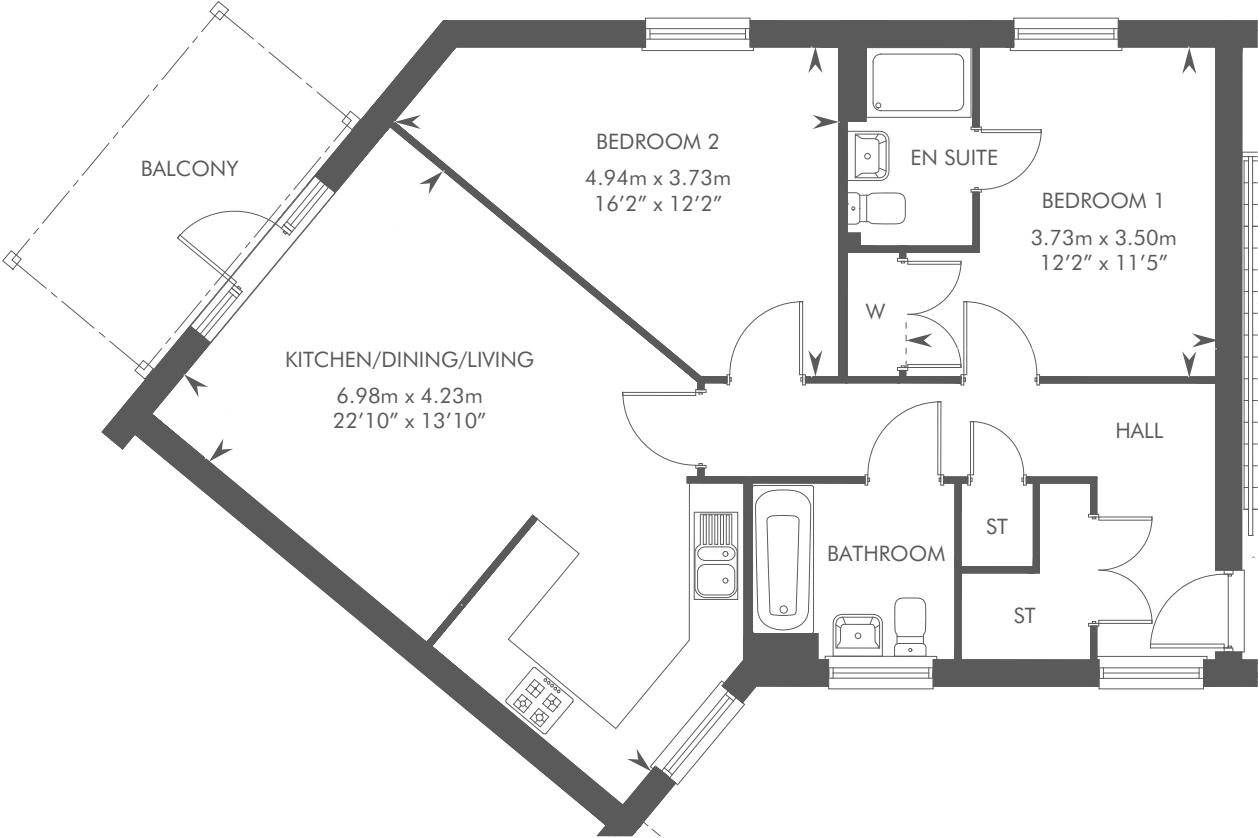
Please ask your Sales Consultant for further details. ST: Store cupboard. W: Wardrobe. A/C: Airing cupboard.

LUTTON APARTMENTS
PLOT 10 – GROUND FLOOR
PLOT 11 – FIRST FLOOR



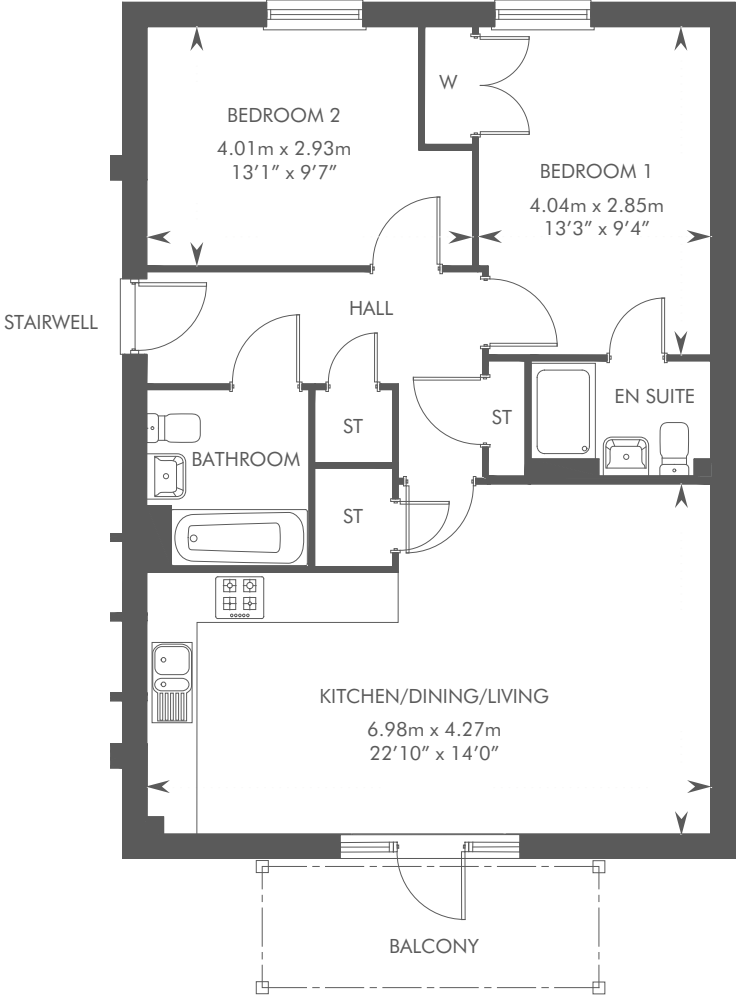
Please ask your Sales Consultant for further details. ST: Store cupboard. W: Wardrobe. A/C: Airing cupboard.

LUTTON APARTMENTS
PLOT 12 – SECOND FLOOR



Please ask your Sales Consultant for further details. ST: Store cupboard. W: Wardrobe. A/C: Airing cupboard.

LUTTON APARTMENTS
PLOT 13 – GROUND FLOOR
PLOT 14 – FIRST FLOOR
PLOT 15 – SECOND FLOOR



Please ask your Sales Consultant for further details. ST: Store cupboard. W: Wardrobe. A/C: Airing cupboard.



CALA.CO.UK

CALA HOMES (NORTH HOME COUNTIES), 1 FALCON GATE, SHIRE PARK, WELWYN GARDEN CITY, AL7 1TW | 01707 397 100

The consumer protection from unfair trading regulations 2008. CALA Homes (North Home Counties) Limited operates a policy of continual product development and the specifications outlined in this brochure are indicative only. CALA reserves the right to implement minor changes to the sizes and specifications shown on any plans or drawings in this brochure without warning. Where alterations to the design, construction or materials to be used in the construction of the property would materially alter the internal floor space, appearance or market value of the property, we will ensure that these changes are communicated to potential purchasers. Whilst these particulars are prepared with all due care for the convenience of intending purchasers, the information is intended as a guide. Floor plans, dimensions and specifications are correct at the time of print.