

# PRINCE'S QUAY



YOUR QUAY TO THE CITY  
APARTMENTS AND TOWNHOUSES





# CITY LIVING AWAITS

Glasgow offers the trendiest artisan bars, cutting edge restaurants and music scenes to rival any world city... how often do you dream of living life at the centre of it all in the capital of culture & creativity?

CALA Homes has turned an exciting corner with our very latest urban venture - a stylish range of 1, 2 and 3 bedroom apartments and 3 bedroom townhouses on the southern banks of the River Clyde in the very heart of Glasgow's energetic Media City.

The creation of this brand new community offers the perfect hub to enjoy all the amazing things this city has to offer. Within just a few steps of the city, immerse yourself in culture with The Riverside Museum or Kelvingrove Art Gallery. Food enthusiasts will love its close proximity to Finnieston, named one of Europe's 10 coolest neighbourhoods and, for those wishing to maintain an active lifestyle, a variety of fitness clubs can be discovered nearby.

Clydeside cycle paths and the motorway network can be reached within minutes, providing plenty of options for those wishing to drive, cycle or even walk to work.

This fantastic new development and the vibrant lifestyle it promises is now yours to grasp so, whatever your journey, Prince's Quay should be part of it.

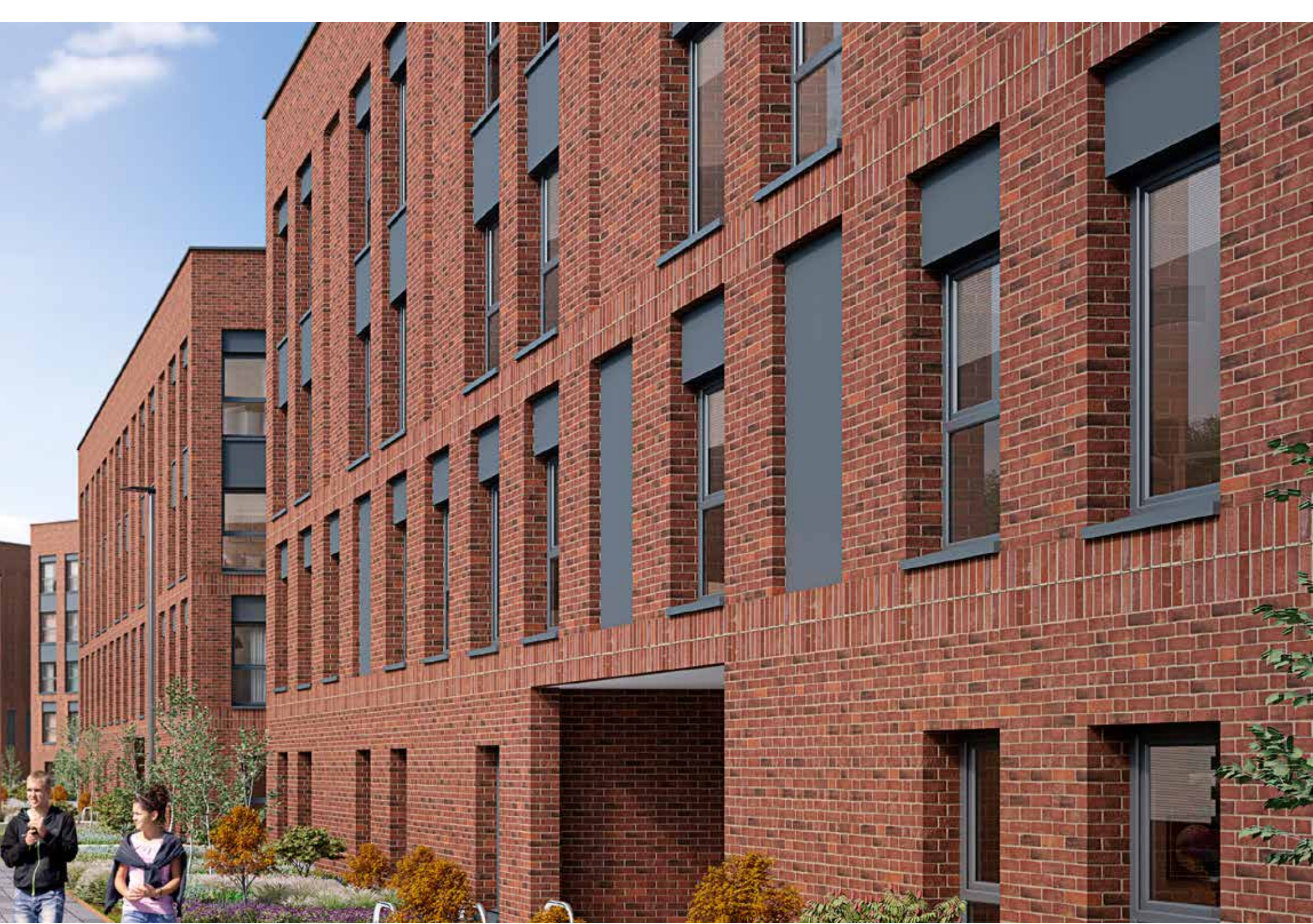


CAPTION







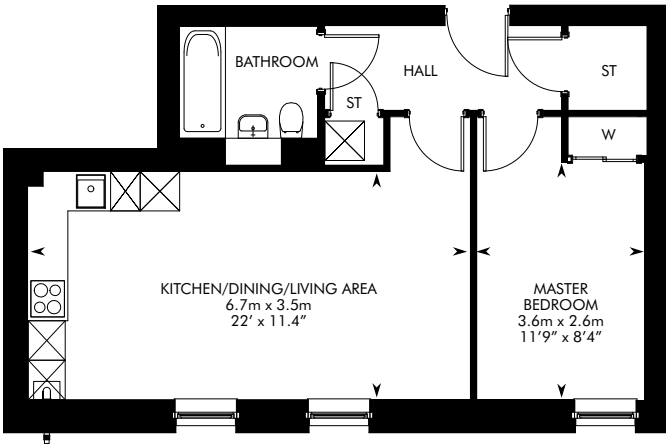






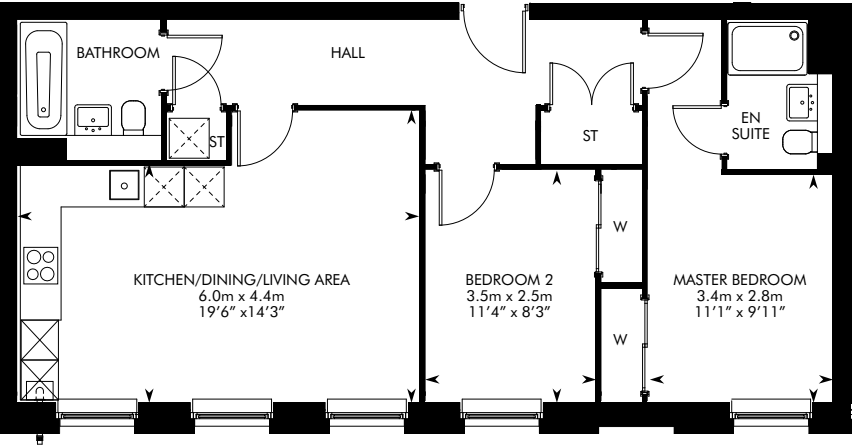
APARTMENTS

BELL



1 BEDROOM APARTMENT  
PLOTS 1, 8, 12, 16, 38, 45, 49, 52, 59, 63 – AS SHOWN  
PLOTS 9, 13, 17, 46, 50, 60, 64 – HANDED

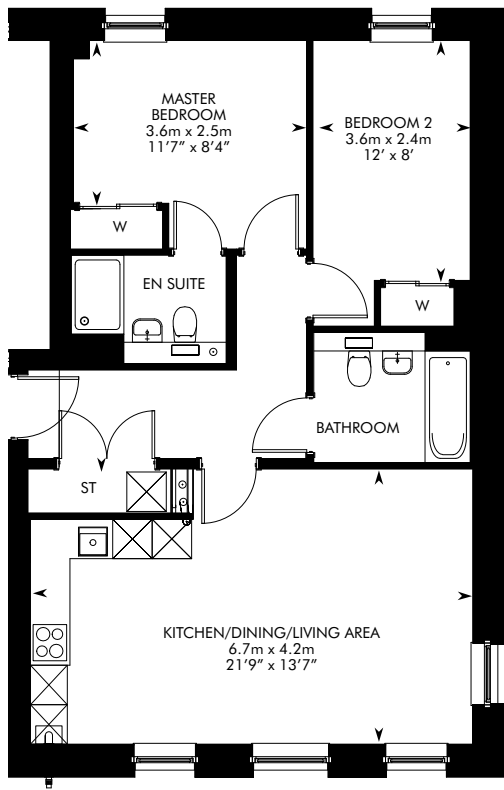
CARMYLE



2 BEDROOM APARTMENT  
PLOTS 5, 42, 56

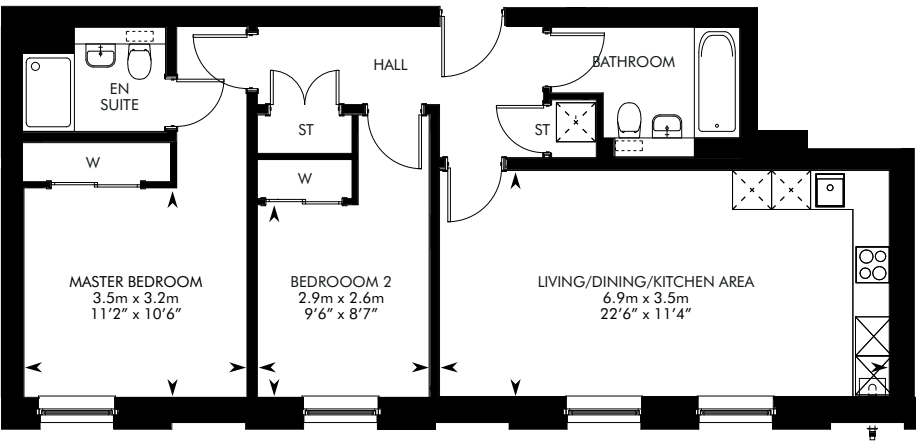
APARTMENTS

CARRON



2 BEDROOM APARTMENT  
PLOTS 3, 40, 54

DELFTFIELD

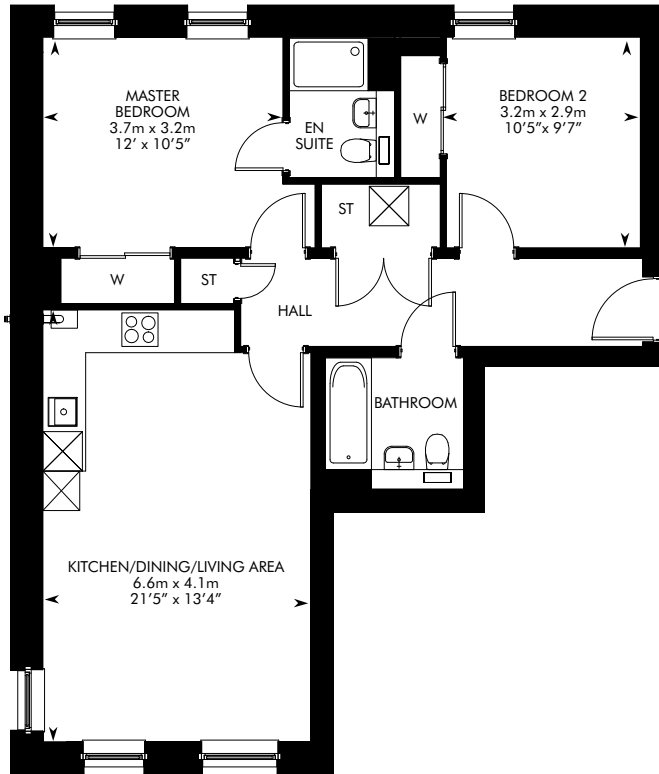


2 BEDROOM APARTMENT  
PLOTS 20, 23, 27, 31, 35 – AS SHOWN  
PLOTS 67, 70, 74, 78 – HANDED



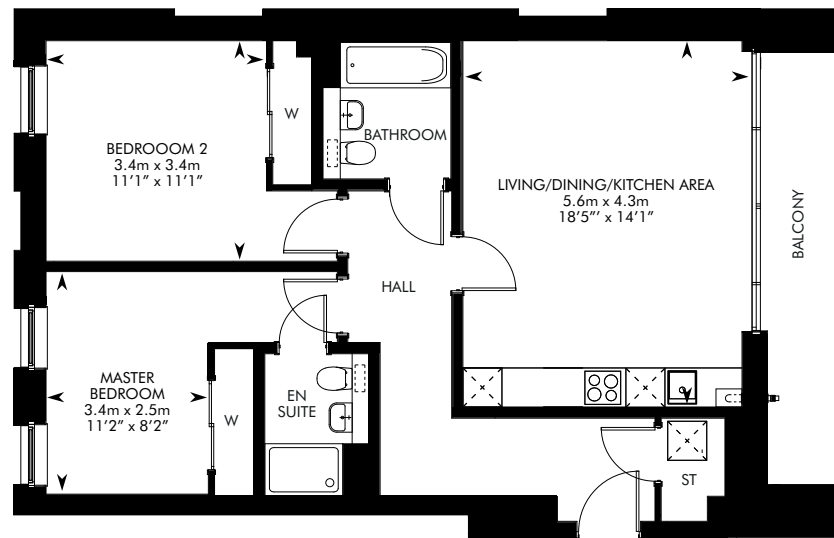
## APARTMENTS

### ORR



2 BEDROOM APARTMENT  
 PLOTS 2, 7, 11, 15, 39, 44, 48, 58,  
 62, 66, 69, 73, 77 – AS SHOWN  
 PLOTS 10, 14, 18, 19, 22, 26, 30, 34,  
 47, 51, 53, 61, 65 – HANDED

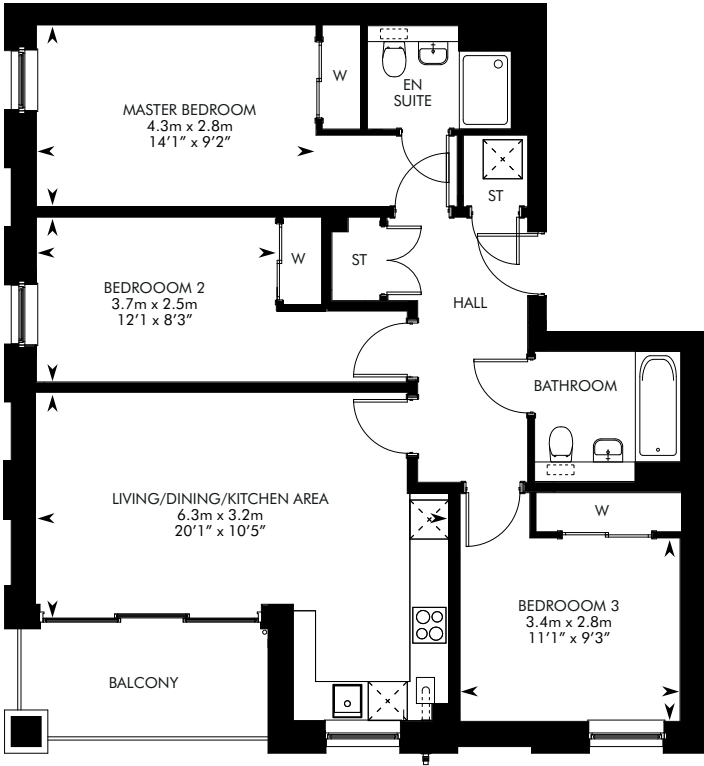
### ROLLOX



2 BEDROOM APARTMENT  
 PLOTS 25, 29, 33, 37 – AS SHOWN  
 PLOTS 72, 76, 80 – HANDED

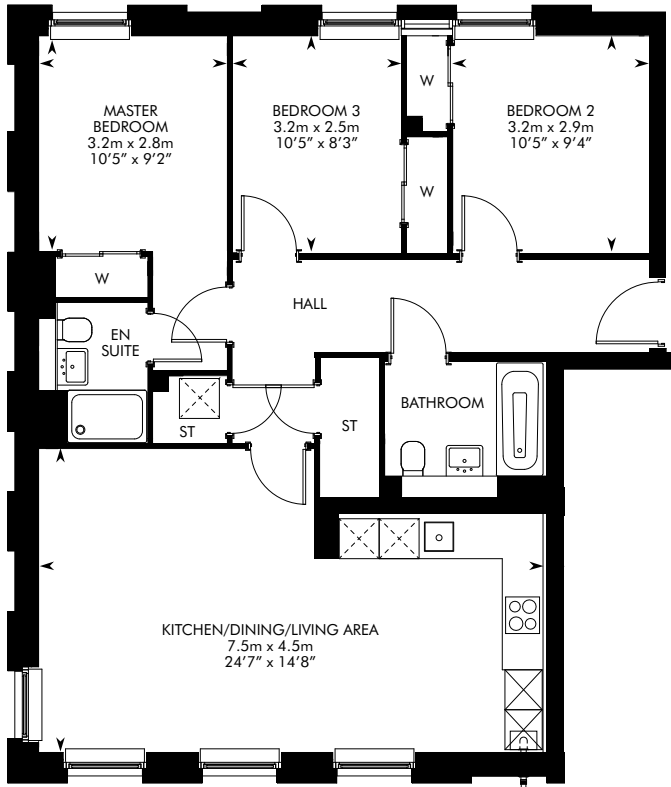
APARTMENTS

STIRLING



3 BEDROOM APARTMENT  
PLOTS 21, 24, 28, 32, 36 – AS SHOWN  
PLOTS 68, 71, 75, 79 – HANDED

TENNANT



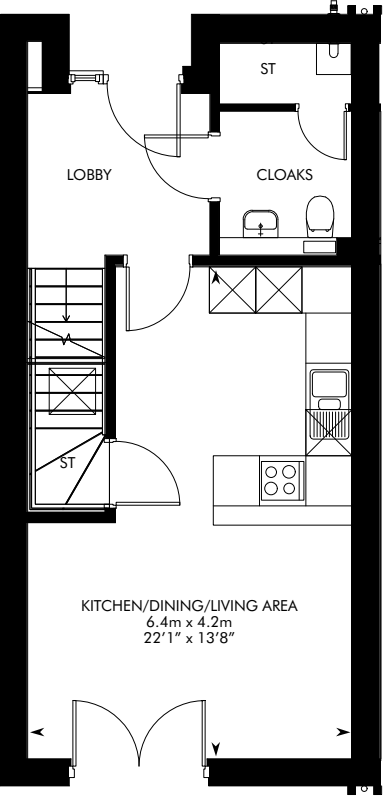
3 BEDROOM APARTMENT  
PLOTS 4, 41, 55 – AS SHOWN  
PLOTS 6, 43, 57 – HANDED



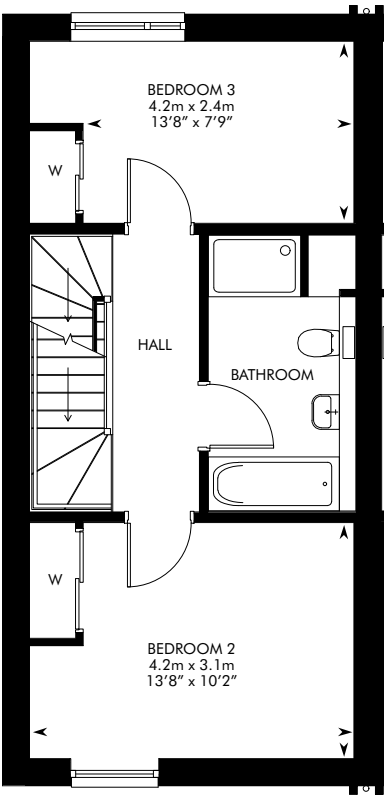


TOWNHOUSES  
PLOTS 81, 87, 93, 99 – AS SHOWN  
PLOTS 83, 89, 95, 101 – HANDED

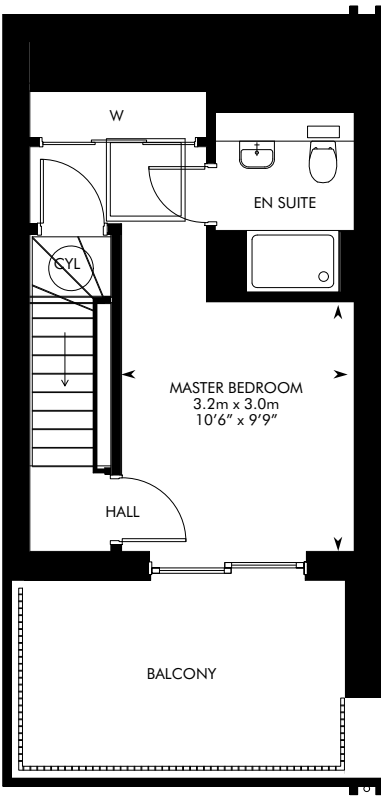
THE CROMPTON END TERRACE



GROUND FLOOR



FIRST FLOOR

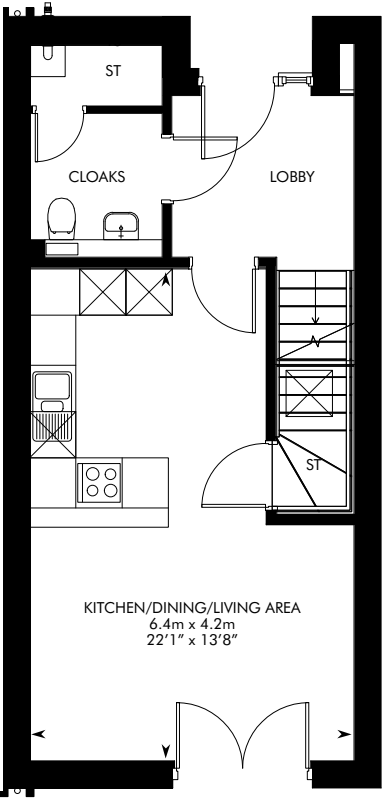


SECOND FLOOR

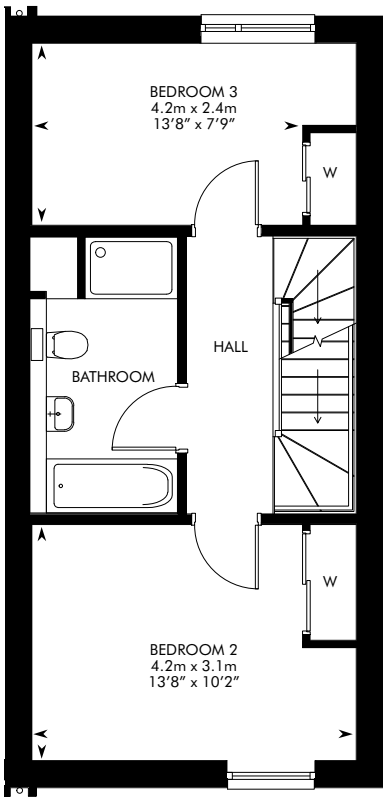


TOWNHOUSES  
PLOTS 85, 91, 97, 103

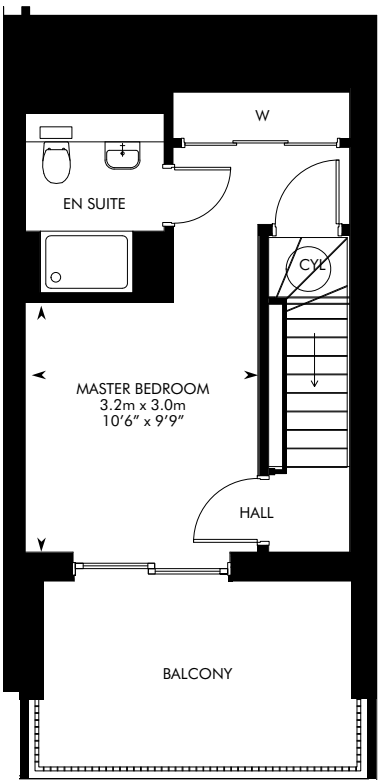
THE BARCLAY MID TERRACE



GROUND FLOOR



FIRST FLOOR



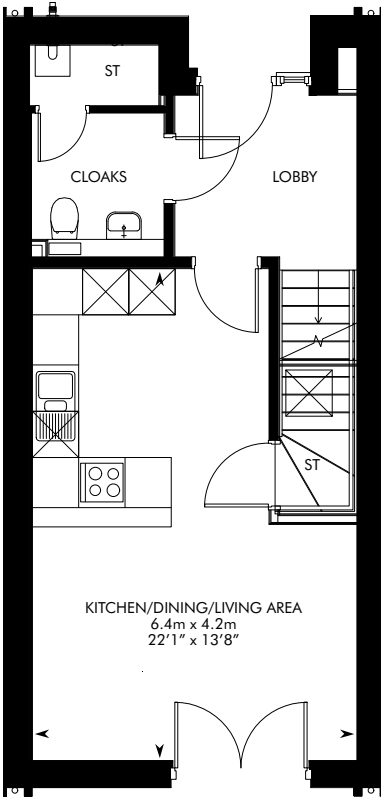
SECOND FLOOR

TOWNHOUSES

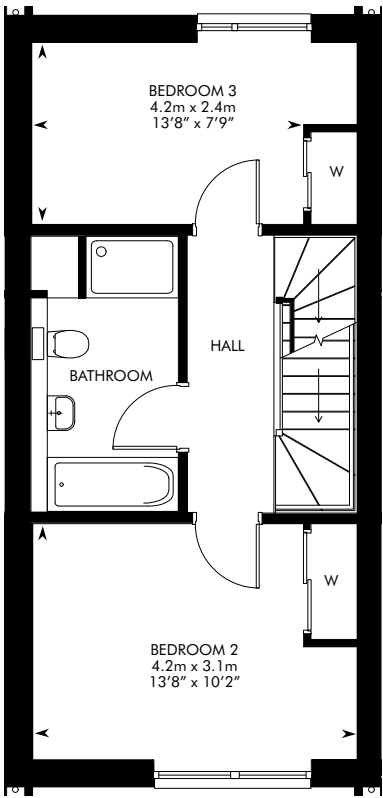
PLOTS 82, 86, 88, 92, 94, 98, 104 – AS SHOWN

PLOTS 84, 90, 96, 102 – HANDED

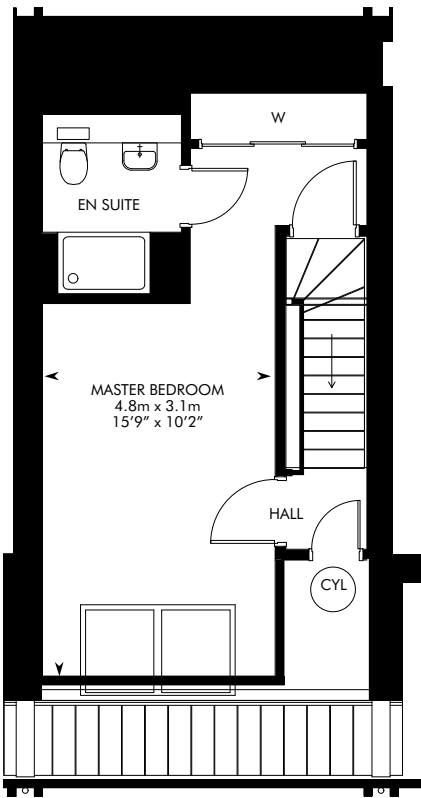
THE FINLAY MID OR END TERRACE



GROUND FLOOR



FIRST FLOOR



SECOND FLOOR

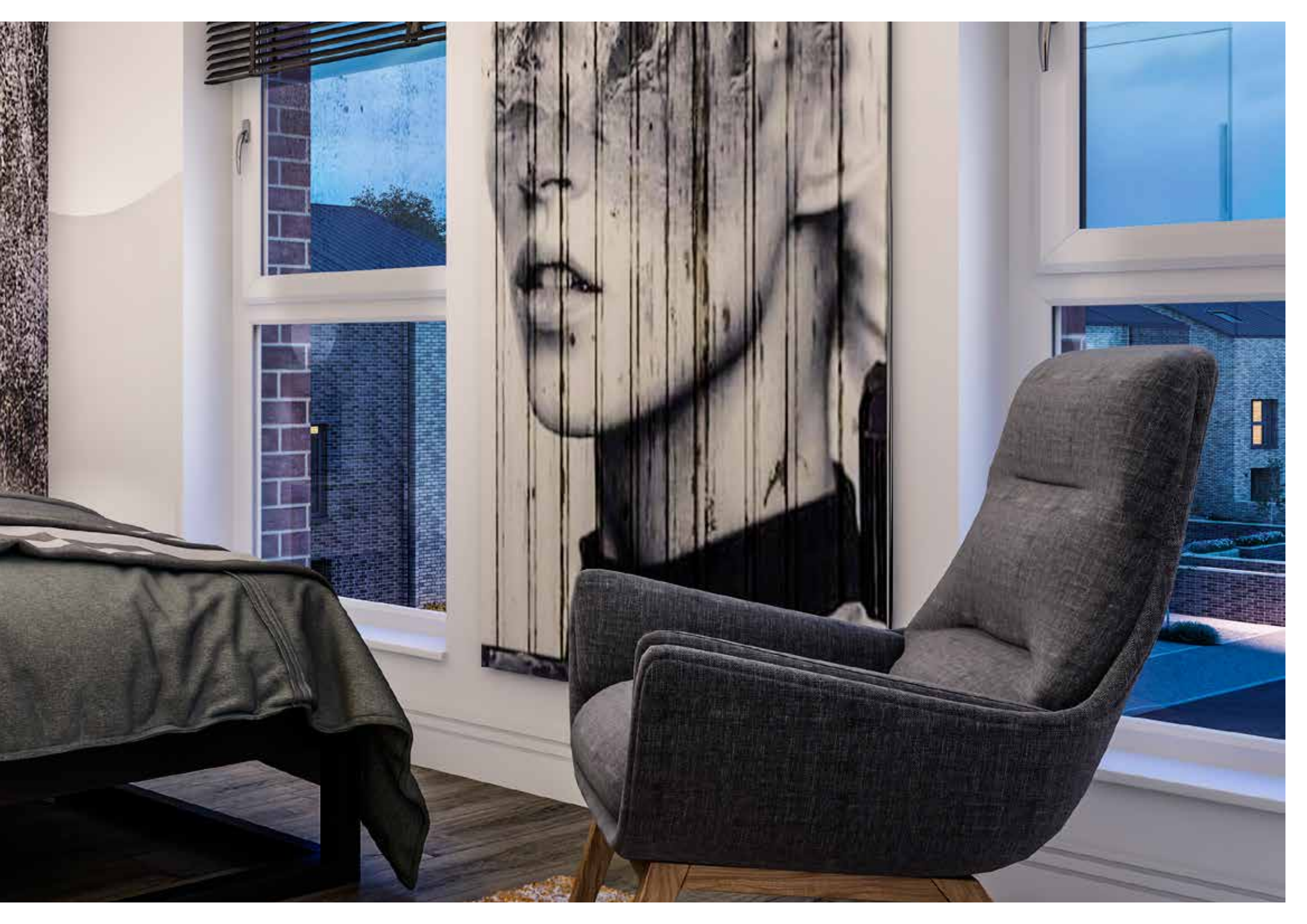














# PRINCE'S QUAY - GLASGOW



The development layout is not drawn to scale and is for general guidance only. Road layouts, pathways, parking bays and external treatments may differ. Landscaping is indicative only. Please confirm the most up-to-date details with our Sales Consultant prior to reservation.





CENTRAL STATION

BUCHANAN STREET

SPRINGFIELD QUAY

FINNIESTON

CLYDE ARC

SSE HYDRO

STV

THE VILLAGE HOTEL

SWG3

SEC CAMPUS

BBC

PRINCE'S QUAY

RIVER CLYDE WALKWAYS

GLASGOW SCIENCE CENTRE





**IMPORTANT NOTICE TO CUSTOMERS:** The Consumer Protection from Unfair Trading Regulations 2008. CALA Homes (West) Limited operates a policy of continual product development and the specifications outlined in this brochure are indicative only. CALA reserves the right to implement minor changes to the sizes and specifications shown on any plans or drawings in this brochure without warning. Where alterations to the design, construction or materials to be used in the construction of the property would materially alter the internal floor space, appearance or market value of the property, we will ensure that these changes are communicated to potential purchasers. Whilst these particulars are prepared with all due care for the convenience of intending purchasers, the information is intended as a guide. The computer generated images and photographs do not necessarily represent the actual finishings/elevation or treatments, landscaping, furnishings and fittings at this development. Floor plans, dimensions and specifications are correct at the time of print. The illustrated location map is a general guide only. For information relating to weather in the area of this development, please refer to the Meteorological Office ([www.metoffice.gov.uk](http://www.metoffice.gov.uk)). Nothing contained in this brochure shall constitute or form part of any contract. Information contained in this brochure is accurate at time of going to press on XX.XX.20. CALA (West) Limited, registered in Scotland company number SC222577. Registered office: Johnstone House, 52-54 Rose Street, Aberdeen AB10 1HA: Agent of CALA Management Limited.