



The Gloster

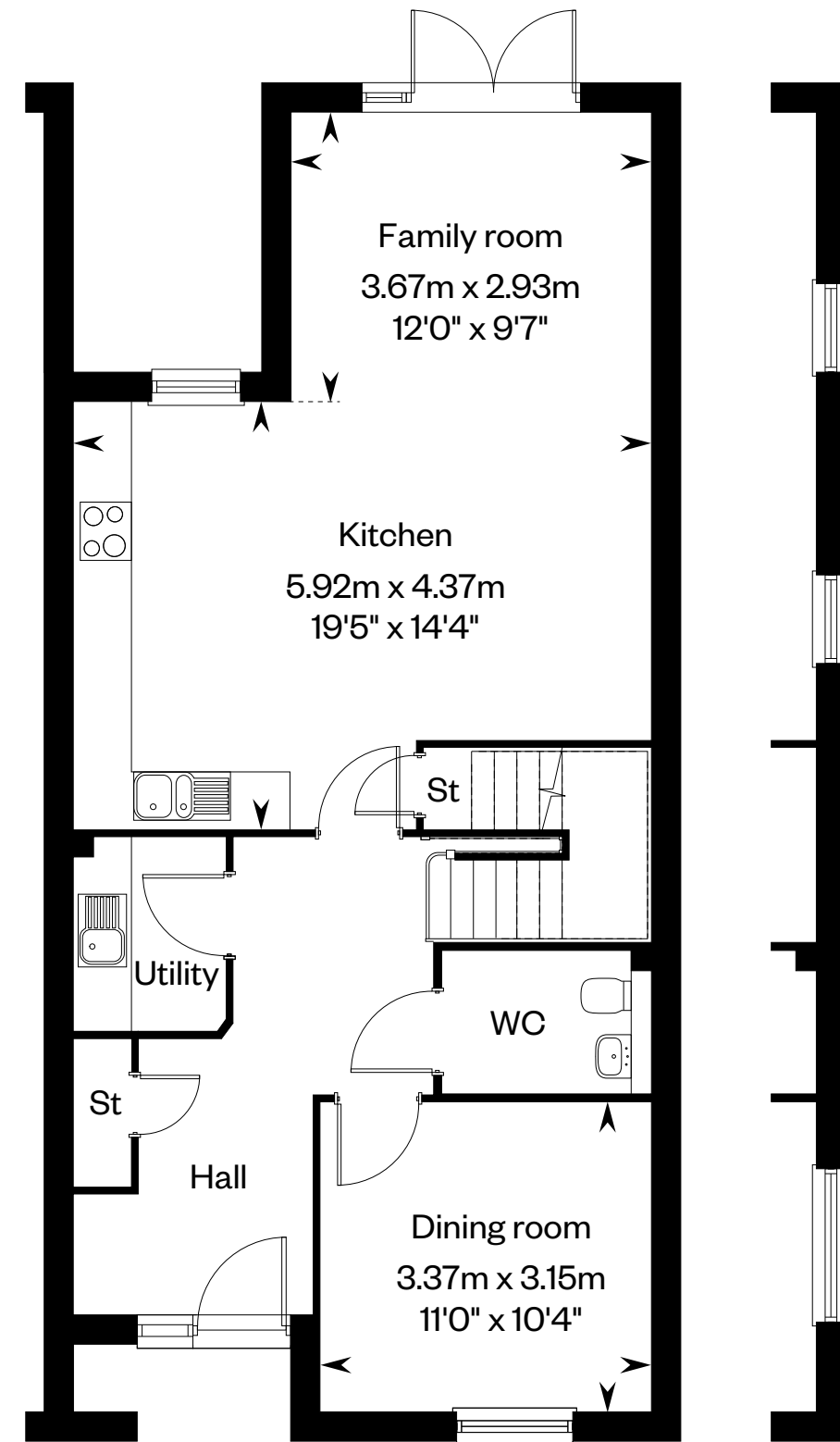
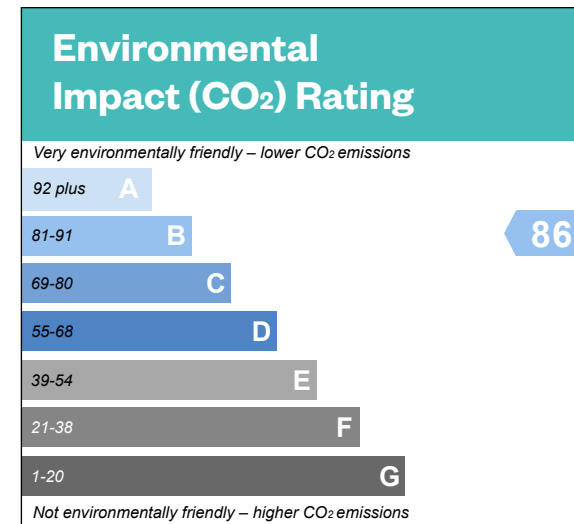
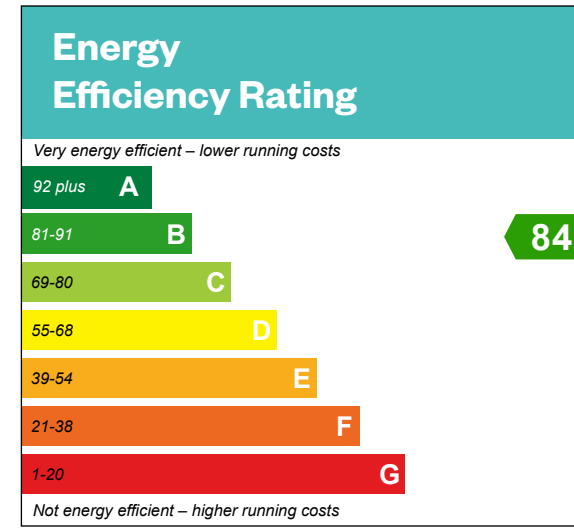
4 bedroom mid and end terrace house
with studio room* and garage



Computer generated image - The Gloster

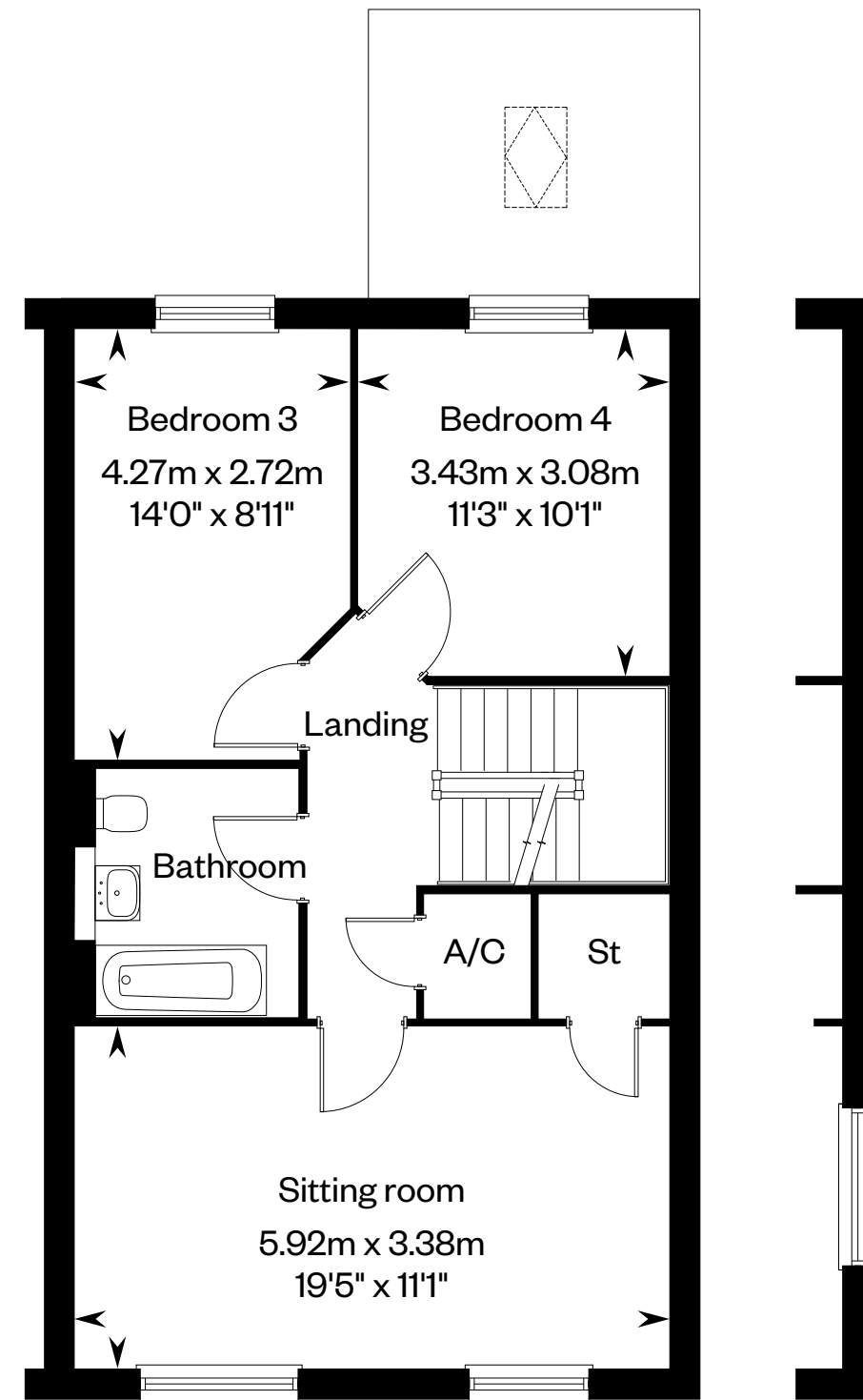
The Gloster

Plots 26, 27, 28, 29, 30, 31 & 32 – as shown



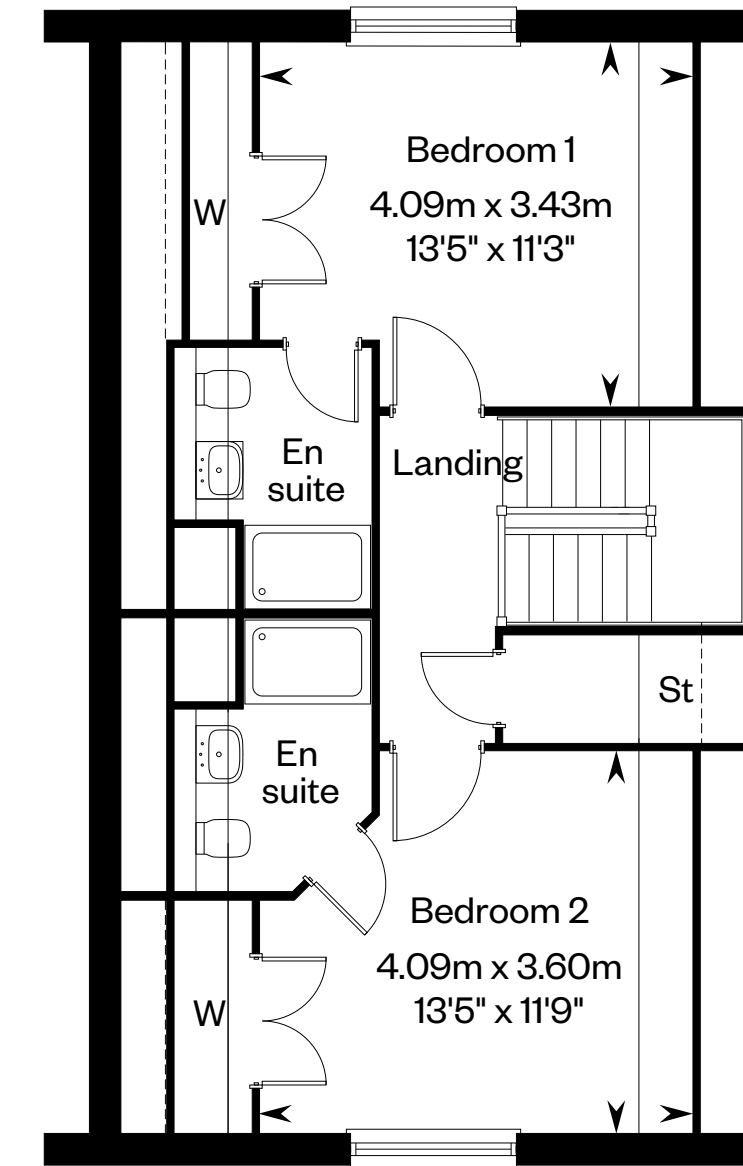
Ground floor

Plot 26 only

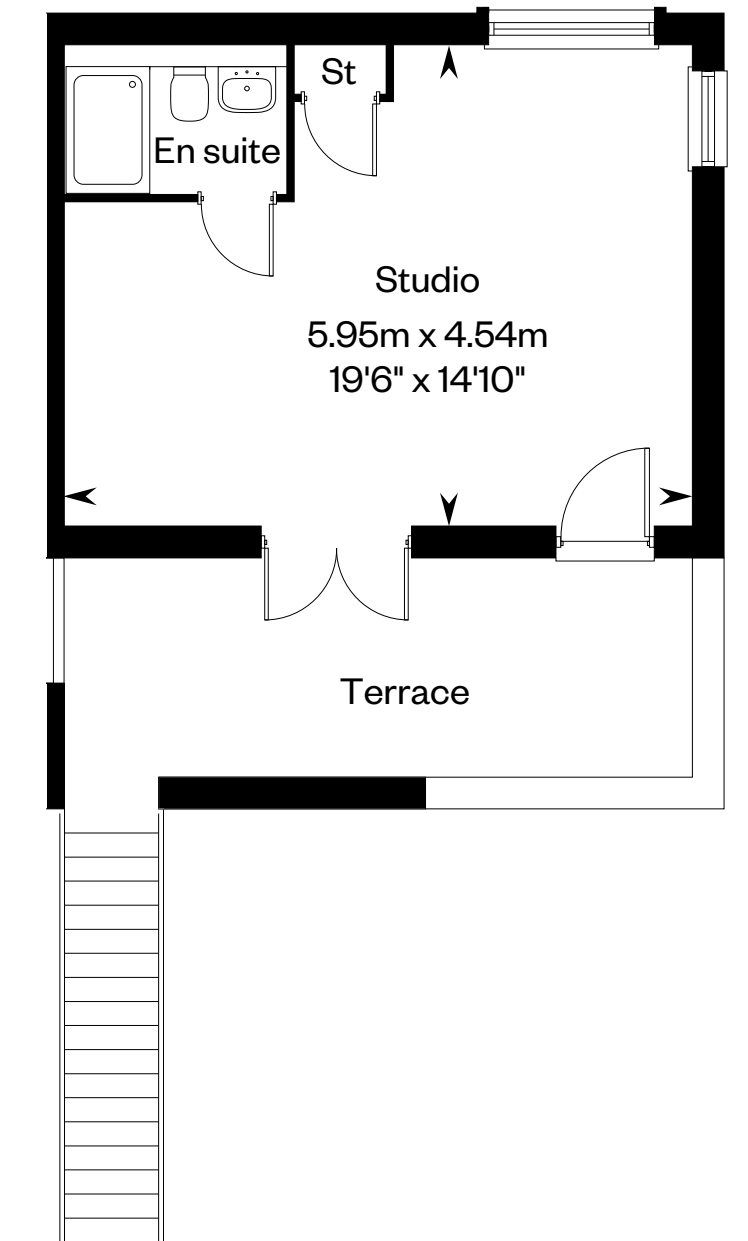


First floor

Plot 26 only



Second floor



Studio room*

Solid thin line denotes extent of full height ceiling. Dotted lines denote reduced head height or structure above and approximate position of 1800mm ceiling height. Please ask your Sales Consultant for further details. St: Store cupboard. W: Wardrobe. A/C: Airing Cupboard. ☐: Roof light. *Studio room to plots 26, 27 & 32 only.

IMPORTANT NOTICE TO CUSTOMERS: The Consumer Protection from Unfair Trading Regulations 2008. Cala Homes (North Home Counties) Limited operates a policy of continual product development and the specifications outlined in this brochure are indicative only. The computer generated images and photographs do not necessarily represent the actual finishings/elevation or treatments, landscaping, furnishings and fittings at this development. Information contained is accurate at date of publication on 19.04.23. See the main brochure for the full Consumer Protection statement. This is a Predicted Energy Assessment for properties that are incomplete. Once the property is completed, this rating will be updated and an official Energy Performance Certificate will be created for the property.