



Allum Apartments

2 bedroom apartments

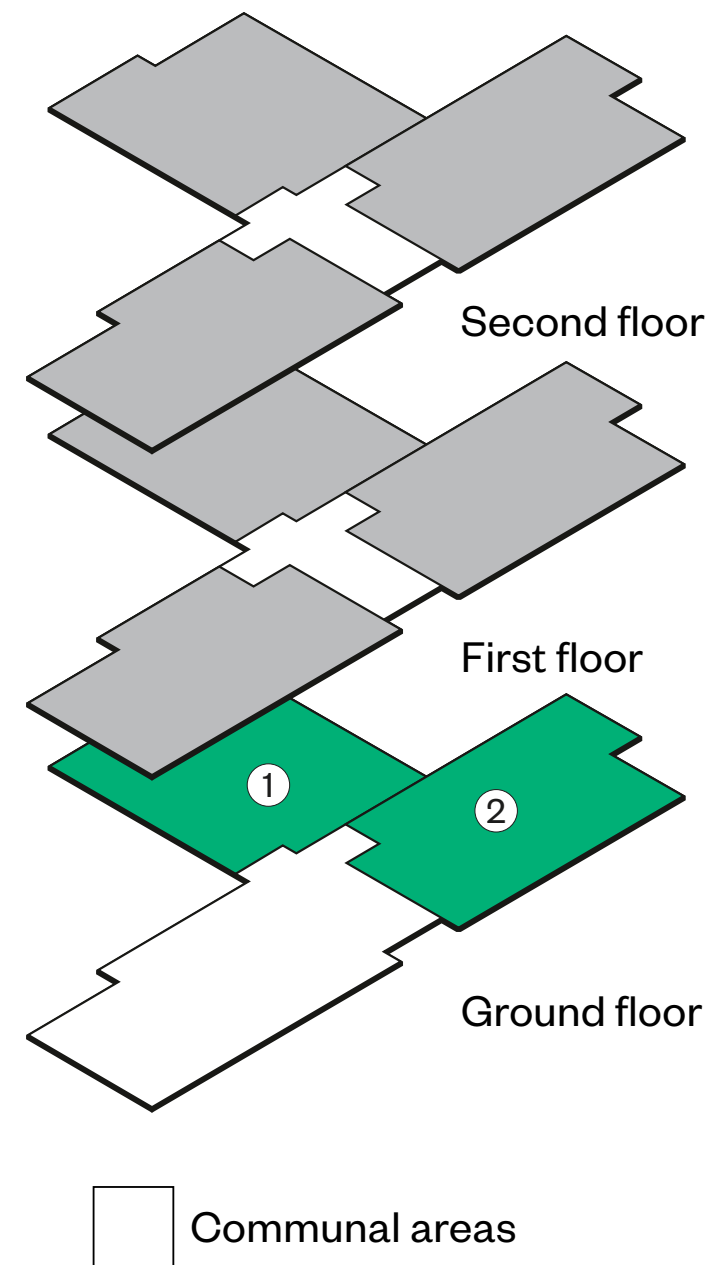
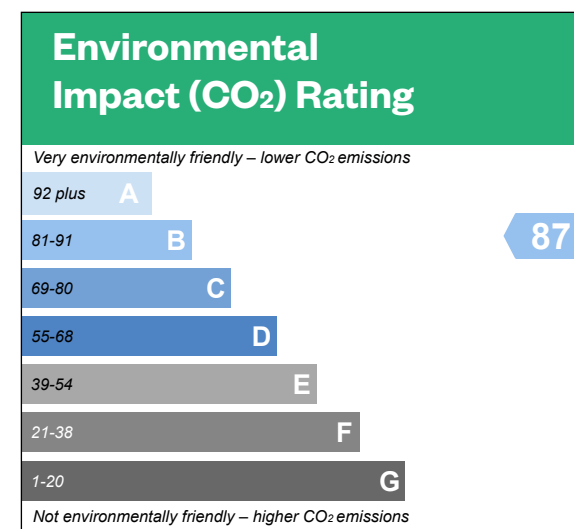
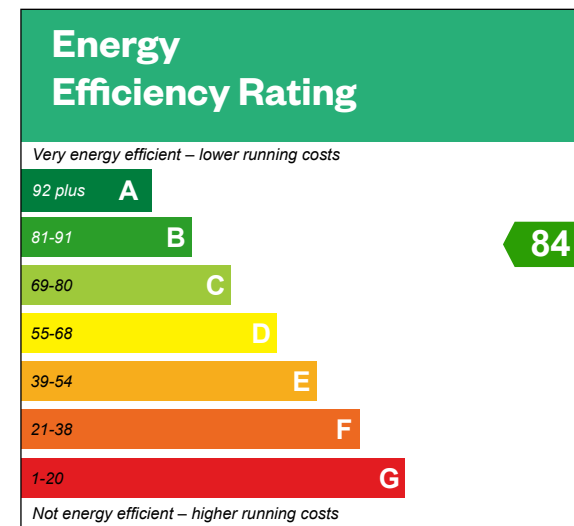


Computer generated image - Allum Apartments

Allum Apartments

Ground floor

Plots 1 & 2 – as shown

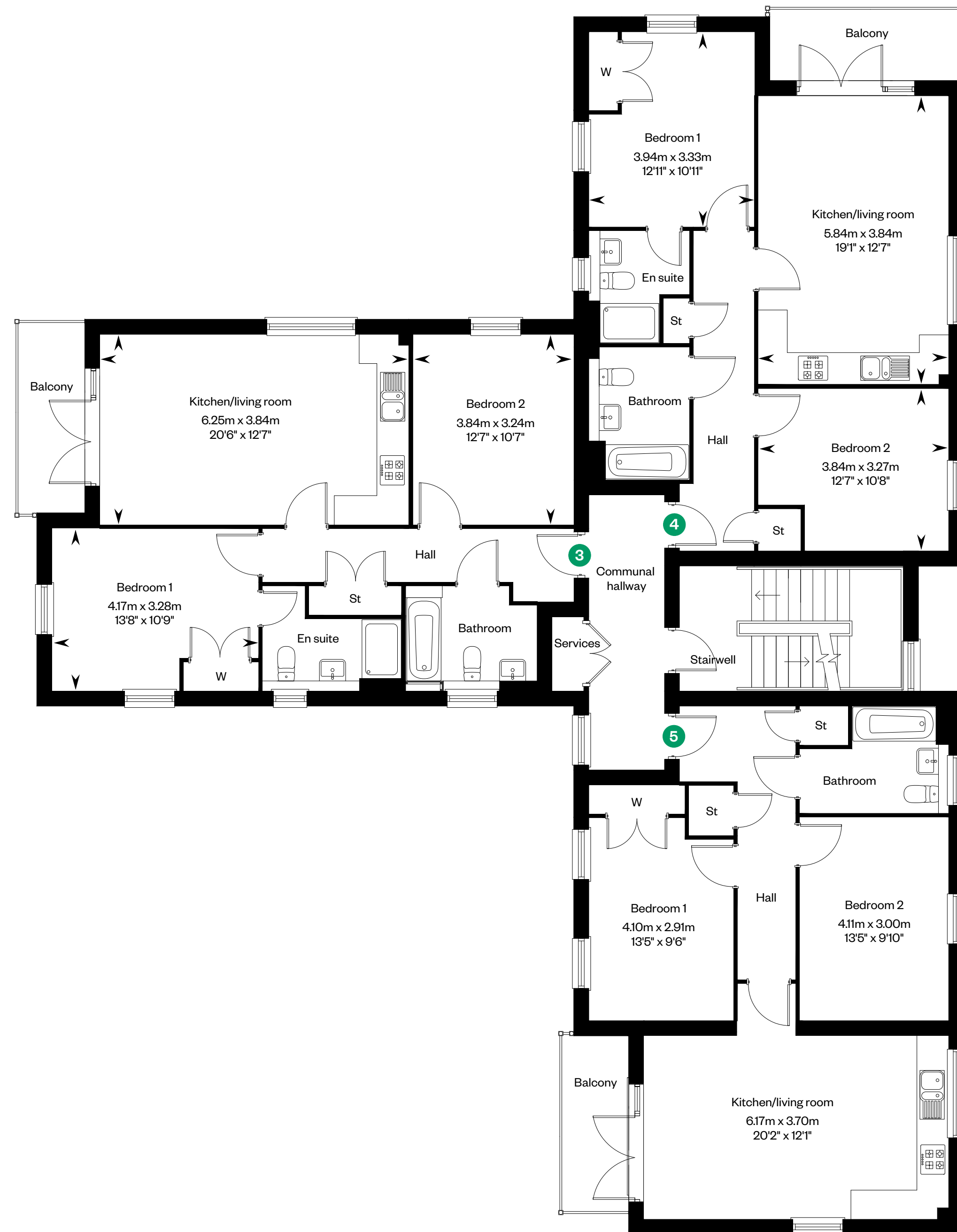
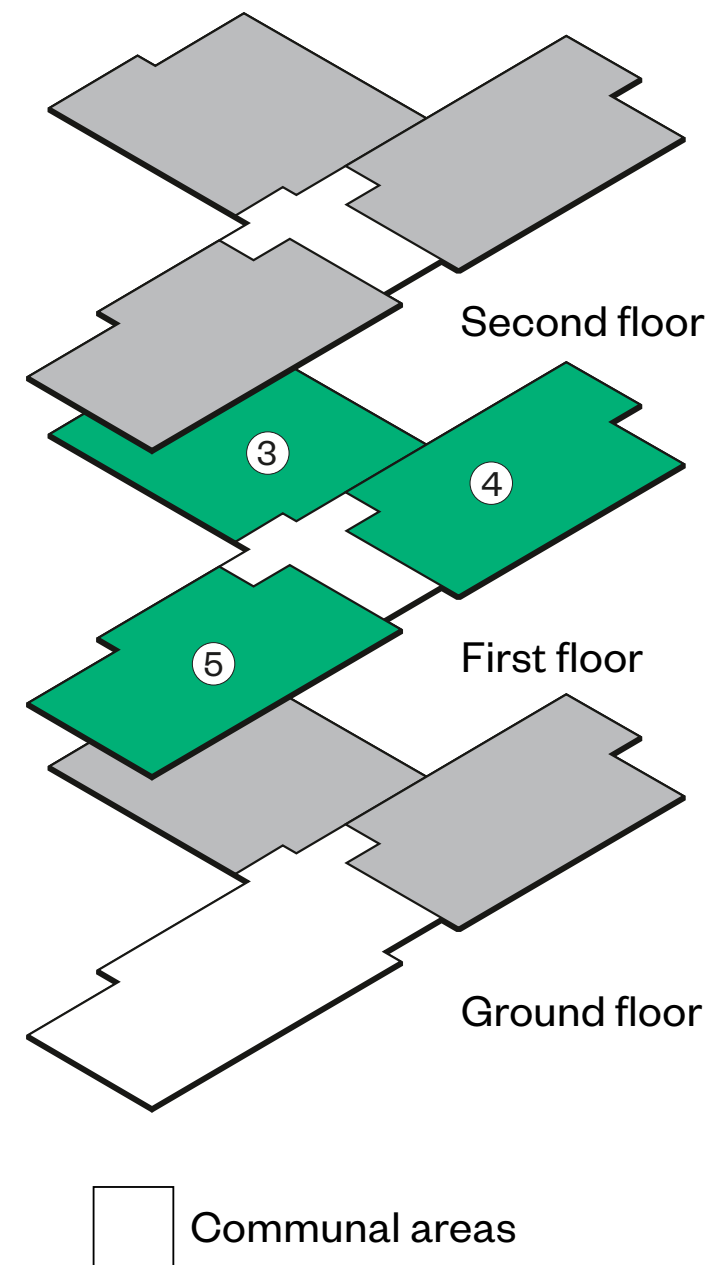
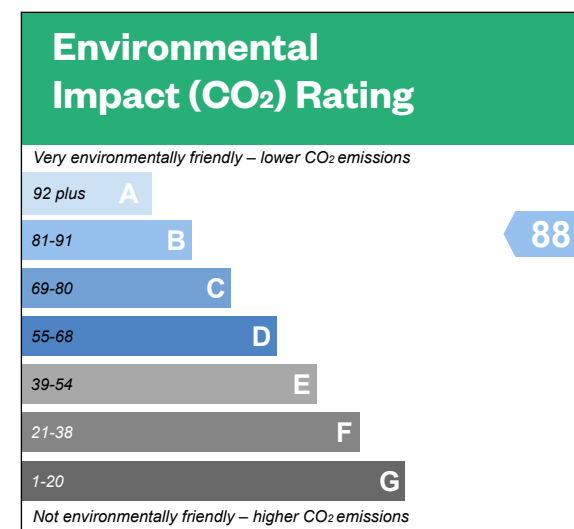
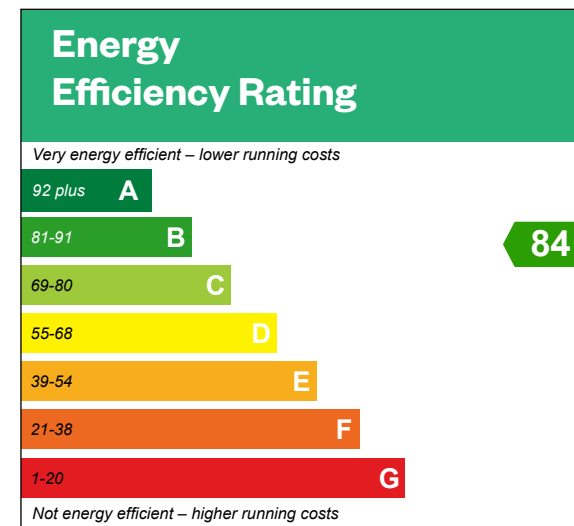


St: Storage cupboard. W: Wardrobe.

Allum Apartments

First floor

Plots 3, 4 & 5 – as shown

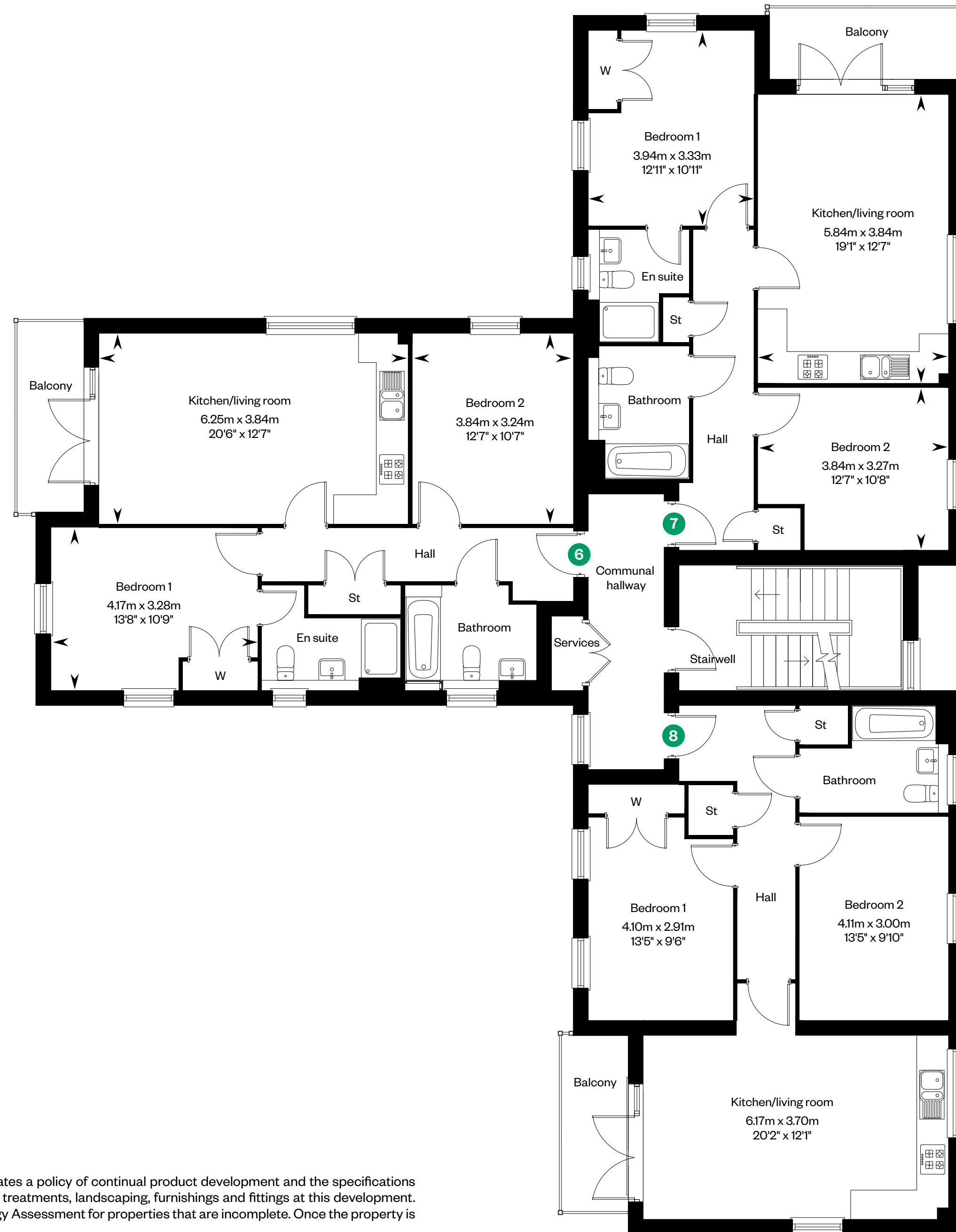
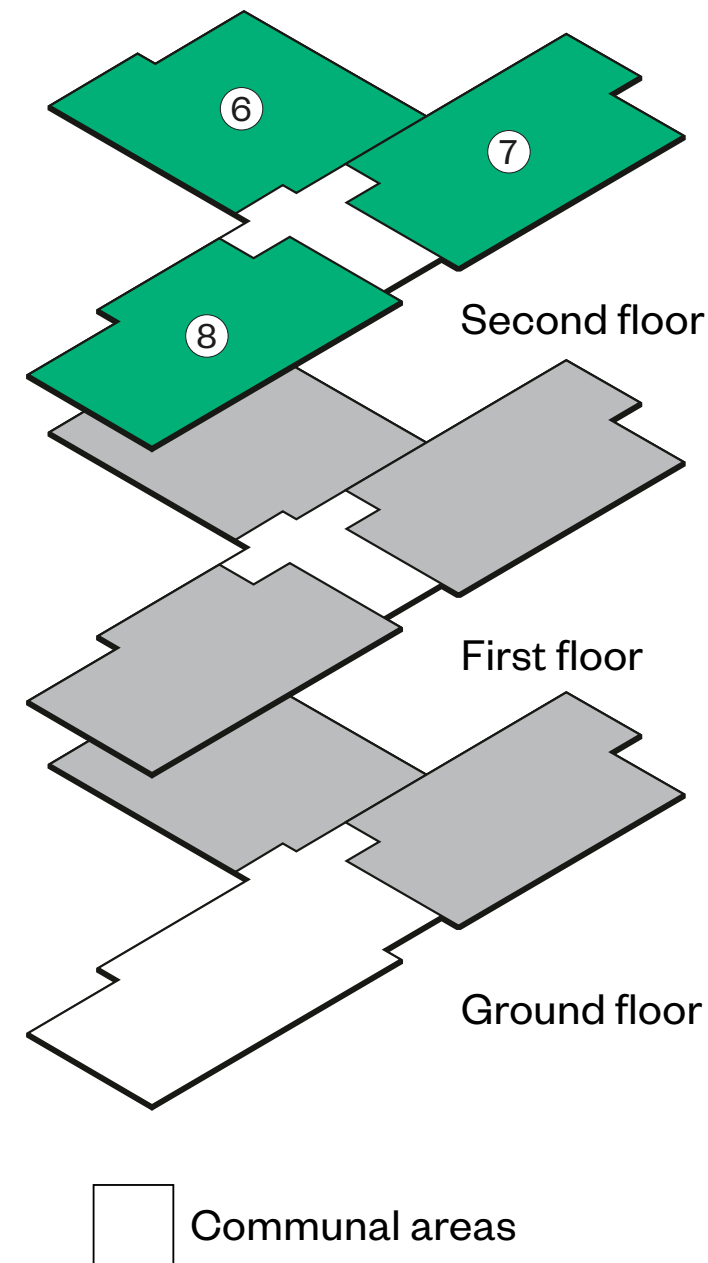
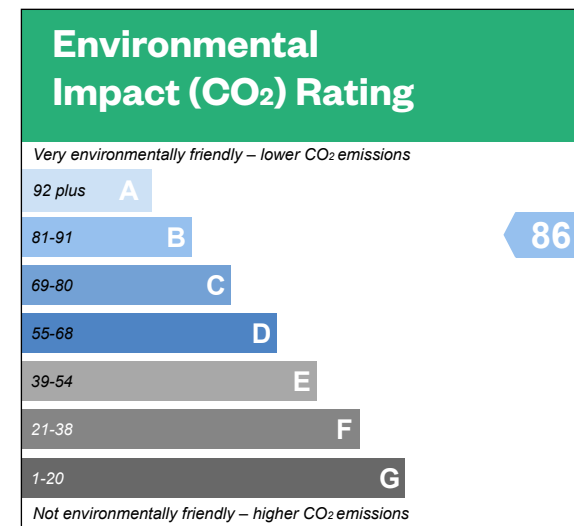
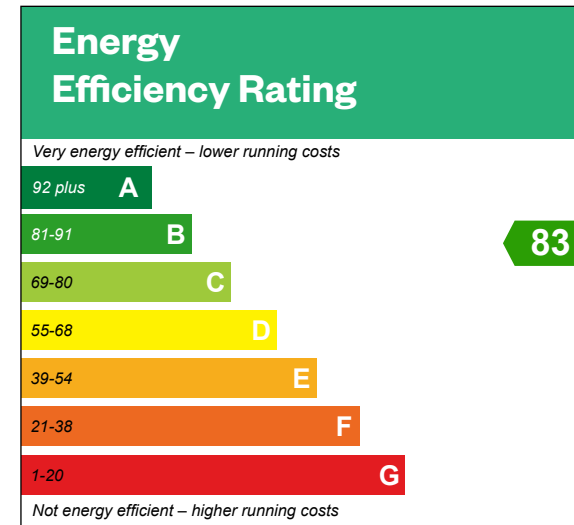


St: Storage cupboard. W: Wardrobe.

Allum Apartments

Second floor

Plots 6, 7 & 8 – as shown



St: Storage cupboard. W: Wardrobe.

IMPORTANT NOTICE TO CUSTOMERS: The Consumer Protection from Unfair Trading Regulations 2008. Cala Homes (North Home Counties) Limited operates a policy of continual product development and the specifications outlined in this brochure are indicative only. The computer generated images and photographs do not necessarily represent the actual finishings/elevation or treatments, landscaping, furnishings and fittings at this development. Information contained is accurate at date of publication on 13.12.22. See the main brochure for the full Consumer Protection statement. This is a Predicted Energy Assessment for properties that are incomplete. Once the property is completed, this rating will be updated and an official Energy Performance Certificate will be created for the property.