



THE COPLE AND HARSTON

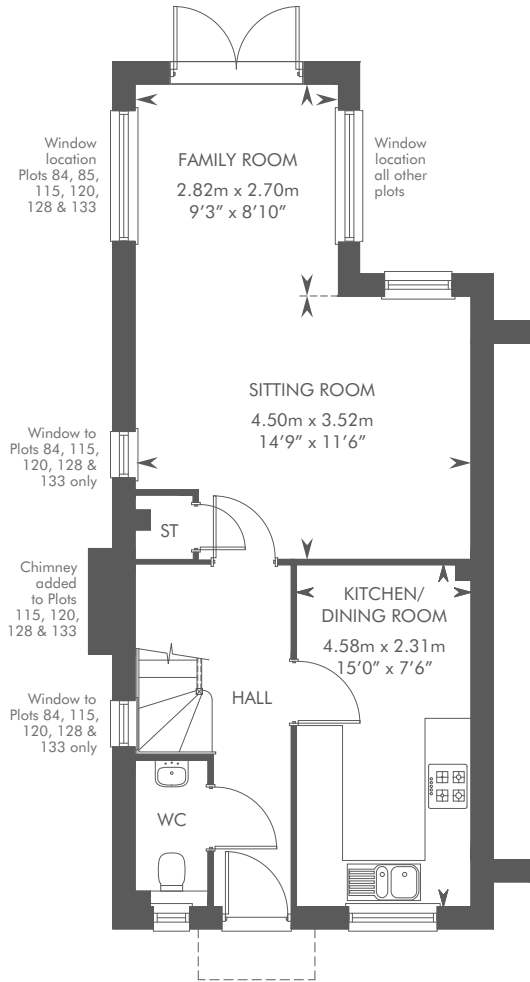
3 BEDROOM MID-TERRACE AND END-OF-TERRACE HOME WITH STUDY AND CARPORT



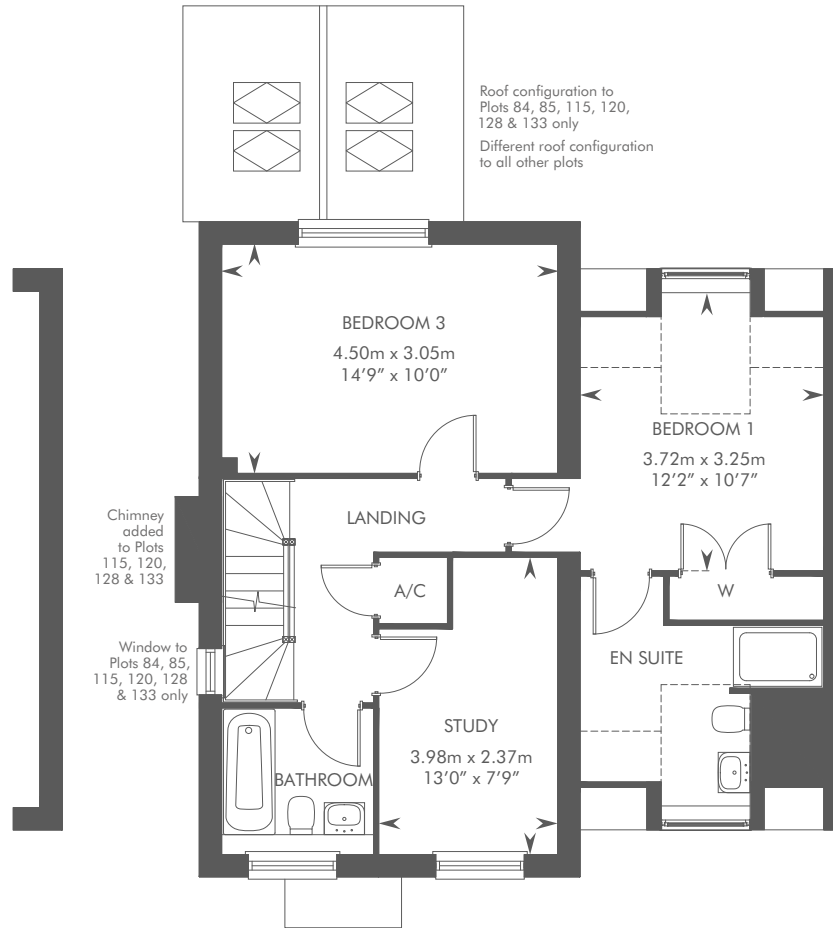
THE COPLE AND HARSTON

LOTS 37, 39, 41, 43, 85, 116, 118, 120, 128, 130 & 132 – AS SHOWN

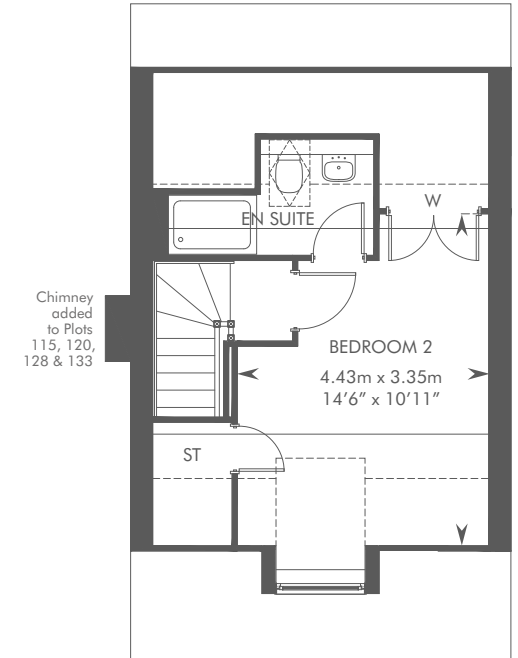
LOTS 38, 40, 42, 44, 84, 115, 117, 119, 129, 131 & 133 – HANDED



GROUND FLOOR



FIRST FLOOR



SECOND FLOOR

Dotted lines denote reduced head height or structure above and approximate position of 2100mm ceiling height. Solid thin line denotes extent of full height ceiling. Please ask your Sales Consultant for further details. ST: Store cupboard. W: Wardrobe. ☒: Roof Lantern. ☒: Velux Window. A/C: Airing cupboard.

The consumer protection from unfair trading regulations 2008. CALA Homes (North Home Counties) Limited operates a policy of continual product development and the specifications outlined in this brochure are indicative only. CALA reserves the right to implement minor changes to the sizes and specifications shown on any plans or drawings in this brochure without warning. Where alterations to the design, construction or materials to be used in the construction of the property would materially alter the internal floor space, appearance or market value of the property, we will ensure that these changes are communicated to potential purchasers. Whilst these particulars are prepared with all due care for the convenience of intending purchasers, the information is intended as a guide. Floor plans, dimensions and specifications are correct at the time of print.

