



Thistle apartments

3 bedroom apartments



Computer generated image - typical apartments at Cammo Meadows

Thistle apartments

Ground floor

Plots 136 & 137 – as shown



Please ask your Sales Consultant for further details. ST: Store cupboard. W: Wardrobe.

IMPORTANT NOTICE TO CUSTOMERS: The Consumer Protection from Unfair Trading Regulations 2008. Cala Homes (East) Limited operates a policy of continual product development and the specifications outlined in this brochure are indicative only. The computer generated images and photographs do not necessarily represent the actual finishings/elevation or treatments, landscaping, furnishings and fittings at this development. Information contained is accurate at date of publication August 2022. See the main brochure for the full Consumer Protection statement.

Thistle apartments

First floor

Plots 138 & 139 – as shown



Please ask your Sales Consultant for further details. ST: Store cupboard. W: Wardrobe.

IMPORTANT NOTICE TO CUSTOMERS: The Consumer Protection from Unfair Trading Regulations 2008. Cala Homes (East) Limited operates a policy of continual product development and the specifications outlined in this brochure are indicative only. The computer generated images and photographs do not necessarily represent the actual finishings/elevation or treatments, landscaping, furnishings and fittings at this development. Information contained is accurate at date of publication August 2022. See the main brochure for the full Consumer Protection statement.

Thistle apartments

Second floor

Plots 140 & 141 – as shown



Please ask your Sales Consultant for further details. ST: Store cupboard. W: Wardrobe.

IMPORTANT NOTICE TO CUSTOMERS: The Consumer Protection from Unfair Trading Regulations 2008. Cala Homes (East) Limited operates a policy of continual product development and the specifications outlined in this brochure are indicative only. The computer generated images and photographs do not necessarily represent the actual finishings/elevation or treatments, landscaping, furnishings and fittings at this development. Information contained is accurate at date of publication August 2022. See the main brochure for the full Consumer Protection statement.



Fern apartments

3 bedroom apartments

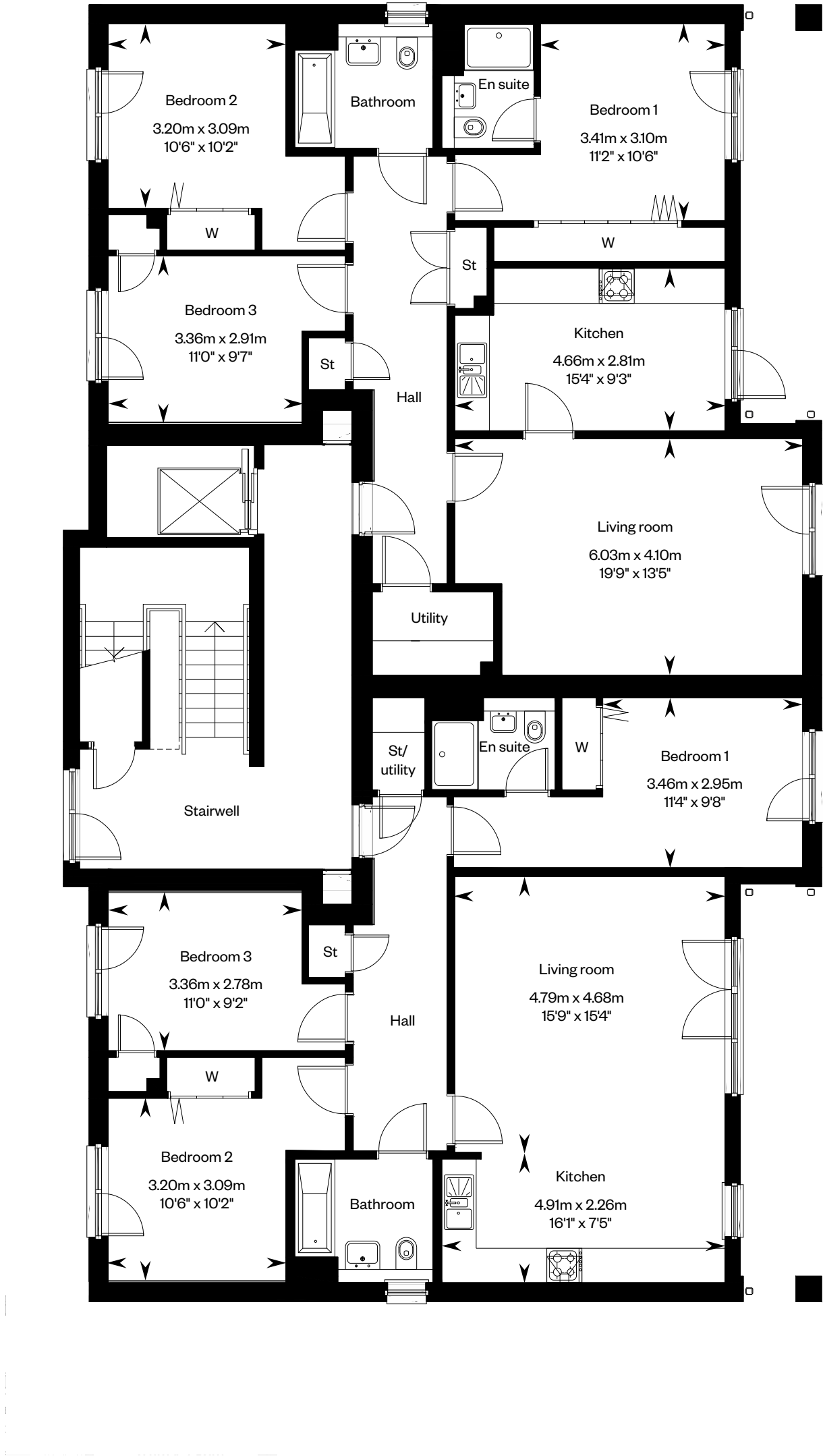


Fern apartments

Ground floor

Plots 156 & 157 – as shown

- 156
- 157



Please ask your Sales Consultant for further details. ST: Store cupboard. W: Wardrobe.

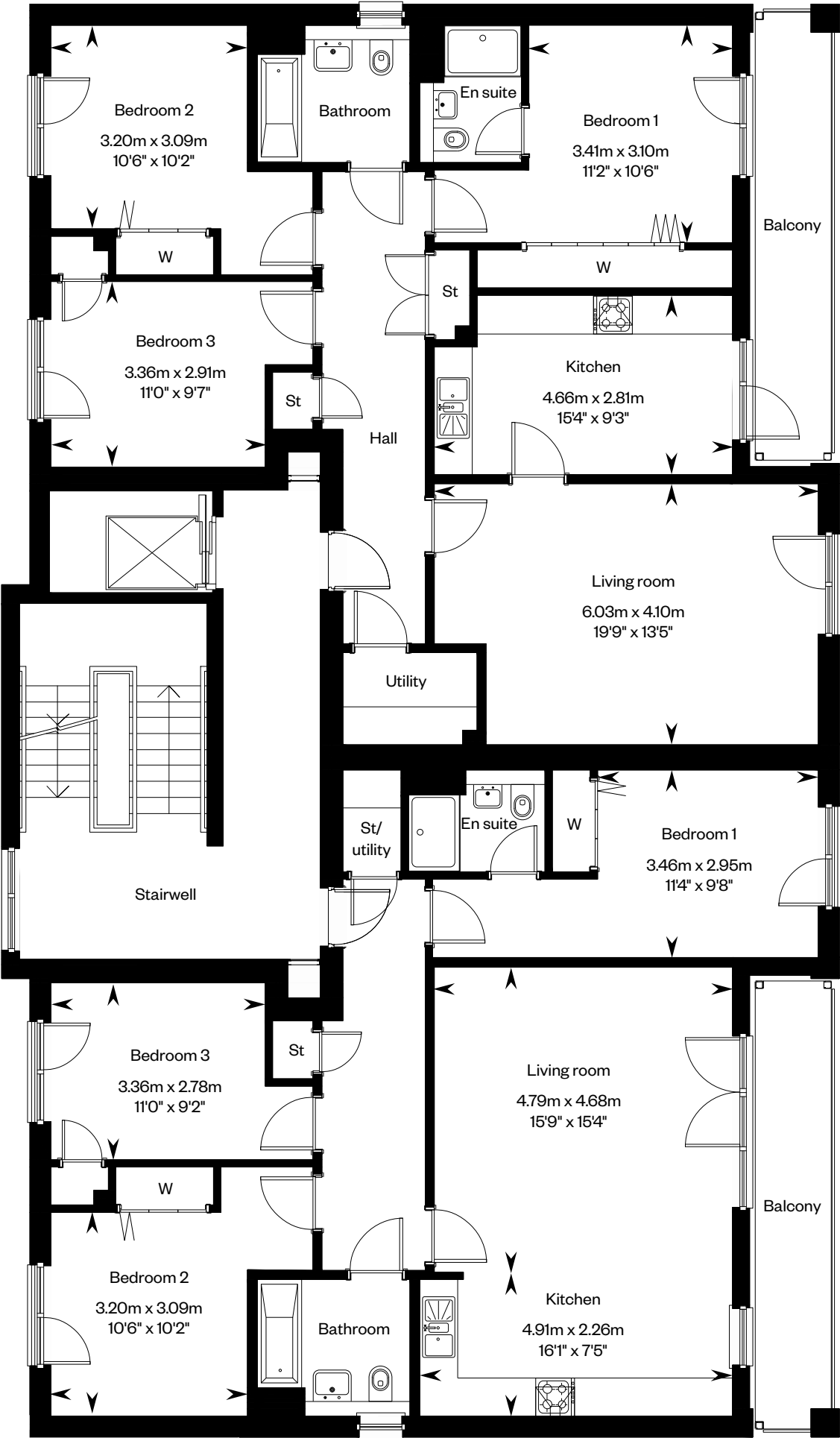
IMPORTANT NOTICE TO CUSTOMERS: The Consumer Protection from Unfair Trading Regulations 2008. Cala Homes (East) Limited operates a policy of continual product development and the specifications outlined in this brochure are indicative only. The computer generated images and photographs do not necessarily represent the actual finishings/elevation or treatments, landscaping, furnishings and fittings at this development. Information contained is accurate at date of publication October 2022. See the main brochure for the full Consumer Protection statement.

Fern apartments

First floor

Plots 158 & 159 – as shown

- 158
- 159



Please ask your Sales Consultant for further details. ST: Store cupboard. W: Wardrobe.

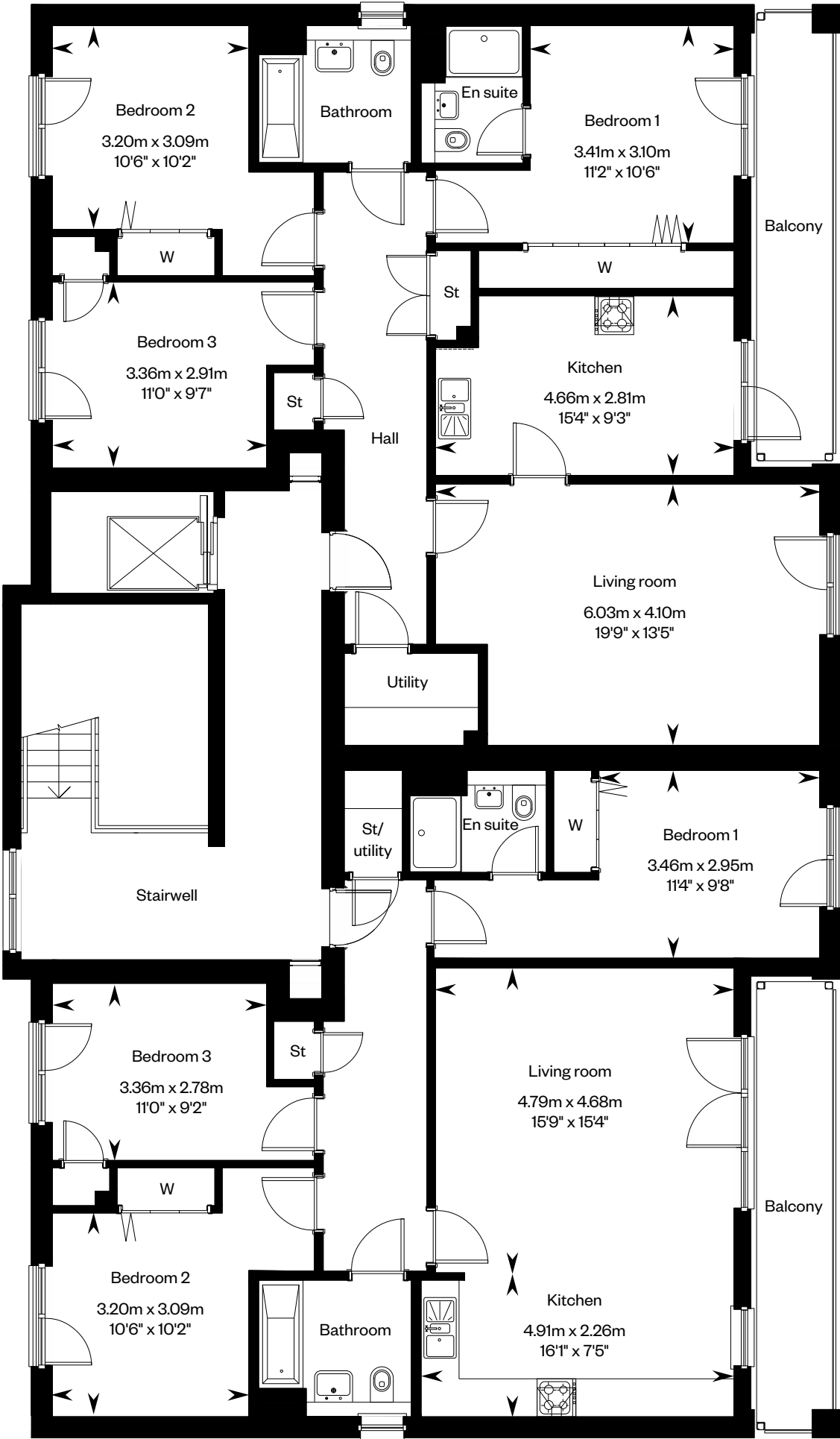
IMPORTANT NOTICE TO CUSTOMERS: The Consumer Protection from Unfair Trading Regulations 2008. Cala Homes (East) Limited operates a policy of continual product development and the specifications outlined in this brochure are indicative only. The computer generated images and photographs do not necessarily represent the actual finishings/elevation or treatments, landscaping, furnishings and fittings at this development. Information contained is accurate at date of publication October 2022. See the main brochure for the full Consumer Protection statement.

Fern apartments

Second floor

Plots 160 & 161 – as shown

- 160
- 161



Please ask your Sales Consultant for further details. ST: Store cupboard. W: Wardrobe.

IMPORTANT NOTICE TO CUSTOMERS: The Consumer Protection from Unfair Trading Regulations 2008. Cala Homes (East) Limited operates a policy of continual product development and the specifications outlined in this brochure are indicative only. The computer generated images and photographs do not necessarily represent the actual finishings/elevation or treatments, landscaping, furnishings and fittings at this development. Information contained is accurate at date of publication October 2022. See the main brochure for the full Consumer Protection statement.



Cammo Meadows

Apartments and Capital Homes
specification



Lifestyle photography at Cammo Meadows

Desirable in every detail

The finishing touches, unexpected flourishes and innovative features. Designer kitchens with desirable technology built-in, for showing off your culinary flair. Sleek family bathrooms and en suites with high specification sanitaryware, for indulging in some well-deserved pampering.

With every home comfort considered for energy efficient and low maintenance living, each aspect of your family home is beautifully designed and built to an exacting standard; because when you look for premium quality, it's the little things that make all the difference.



Specification

Kitchen & utility rooms

- Stylish studio designed kitchen
- Stainless steel cooker hood
- Bosch induction hob
- Bosch integrated fridge/freezer
- Bosch integrated dishwasher
- Bosch stainless steel electric oven
- Bosch washer dryer (as design dictates)
- 1½ bowl insert granite sink and drainer in kitchen

Bathrooms & en suites

- White Laufen Pro WC and wash basin
- White Carron bath
- Vado Life taps and bath mixer
- Vado thermostatic showers to en suites
- Chrome finished shower enclosures
- Thermostatic combined bath filler and handheld spray set (as design dictates)
- Chrome towel warmers (as design dictates)
- Choice of wall tiling from Porcelanosa ranges*
- Soft close toilet seats
- White vanity unit

Decoration

- Internal walls will be finished in white emulsion
- Ceilings will be finished in white emulsion
- White gloss finish to skirtings and facings
- White gloss finish to internal pass doors
- French doors to balcony/terrace (as design dictates)
- Contemporary lever style door handles

Wardrobes

- Bi-fold doors to bedrooms (as design dictates)

Electrical

- Downlighters to bathroom and en suites (as design dictates)
- Low energy pendant light fitting to all other rooms
- Low energy external light fitting provided to external doors
- Shaver socket (as design dictates)
- TV/data distribution points
- Multigrid switching of kitchen appliances
- Double socket with integral USB power slots to kitchen and bedroom 1 (as design dictates)
- PV panels fitted to the roof (as design dictates)

Security & safety

- Mains-wired smoke detectors
- Heat detector in kitchen
- Battery-operated Carbon Monoxide detectors
- Mains operated Carbon Dioxide monitor to bedroom 1
- Communal entrance point to stairwells fitted with fob-operated multi-point locking device
- Door entry system
- Each apartment has handset with video display (excluding Capital Homes)

Plumbing & heating

- Central heating via a high efficiency gas boiler heating system
- Thermostatic heating controls

Externals

- uPVC double-glazed windows
- Apartment blocks feature composite apartment entrance doors with 3-point locking system
- Capital Homes feature composite entrance door with 3-point locking system and glazed sidelight
- A factoring company will be appointed to maintain all common areas with an annual fee payable by residents

*Plot specific detail. Specifications are correct at time of going to print. Any alterations to the specifications will be of equal or greater value and Cala reserves the right to implement changes to the specifications without warning. Whilst these particulars are prepared with all due care for the convenience of intending purchasers, the information is intended as a preliminary guide only. For more information please speak to a Sales Consultant.



Stock photography



Welcome to your new home

Cammo Meadows,
Off Maybury Road,
Edinburgh, EH4 8HA

[Click here to arrange your viewing](#)



IMPORTANT NOTICE TO CUSTOMERS: The Consumer Protection from Unfair Trading Regulations 2008. Cala Homes (East) Limited operates a policy of continual product development and the specifications outlined in this brochure are indicative only. We reserve the right to implement minor changes to the sizes and specifications shown on any plans or drawings in this brochure without warning. Where alterations to the design, construction or materials to be used in the construction of the property would materially alter the internal floor space, appearance or market value of the property, we will ensure that these changes are communicated to potential purchasers. Whilst these particulars are prepared with all due care for the convenience of intending purchasers, the information is intended as a guide. The computer generated images and photographs do not necessarily represent the actual finishings/elevation or treatments, landscaping, furnishings and fittings at this development. Floor plans, dimensions and specifications are correct at the time of print. The illustrated location map is a general guide only. Please note that distances and timings referred to in this brochure are approximate and sourced from Google Maps. For information relating to weather in the area of this development, please refer to the Meteorological Office (www.metoffice.gov.uk). Nothing contained in this brochure shall constitute or form part of any contract. Information contained in this brochure is accurate at time of going to press on XX.XX.XX. Cala (East) Limited, registered in Scotland company number SC222577. Registered office: Cairnlee House, Callendar Rd, Falkirk FK11XE.