

The Cleland

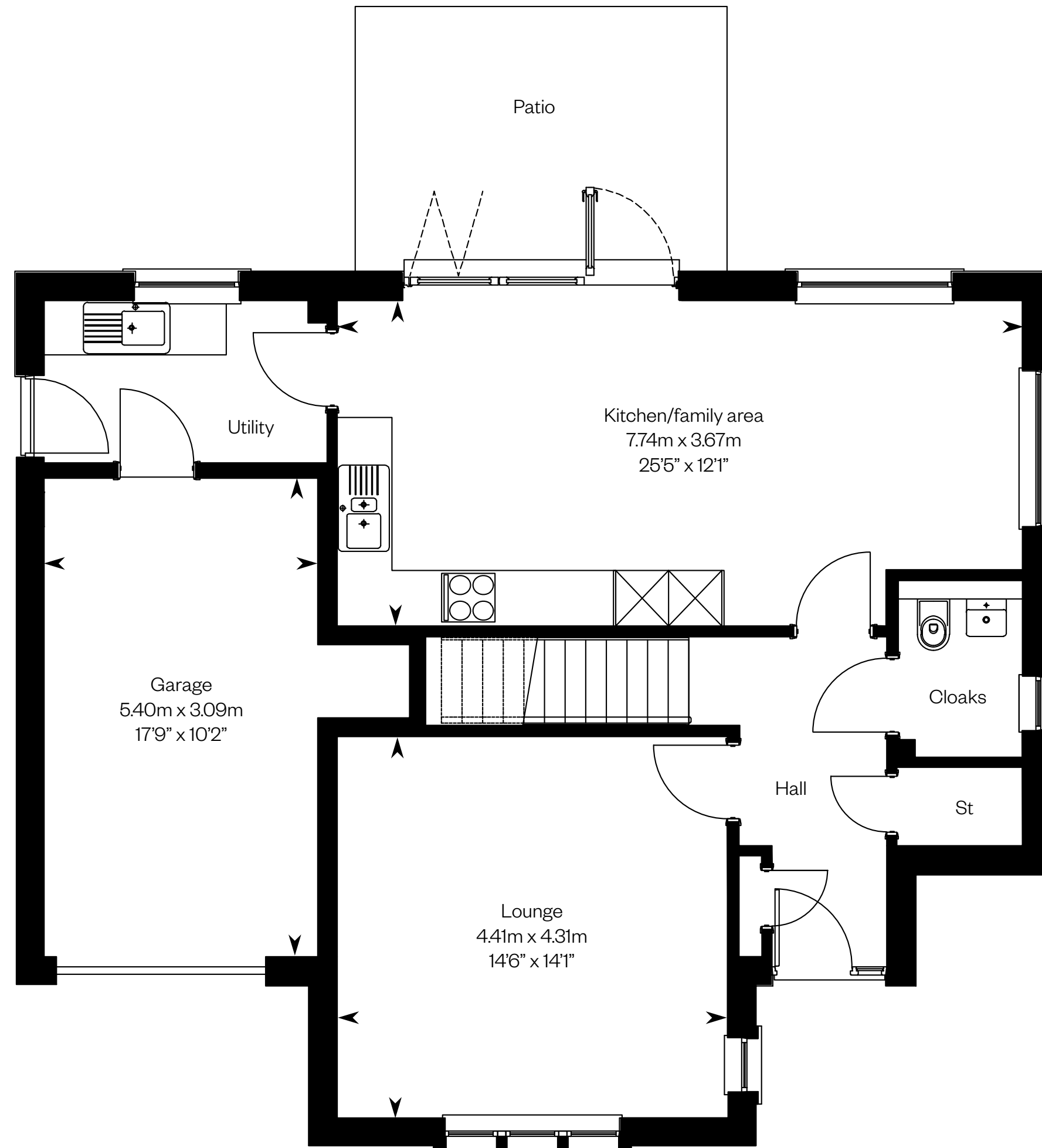
4 bedroom detached home



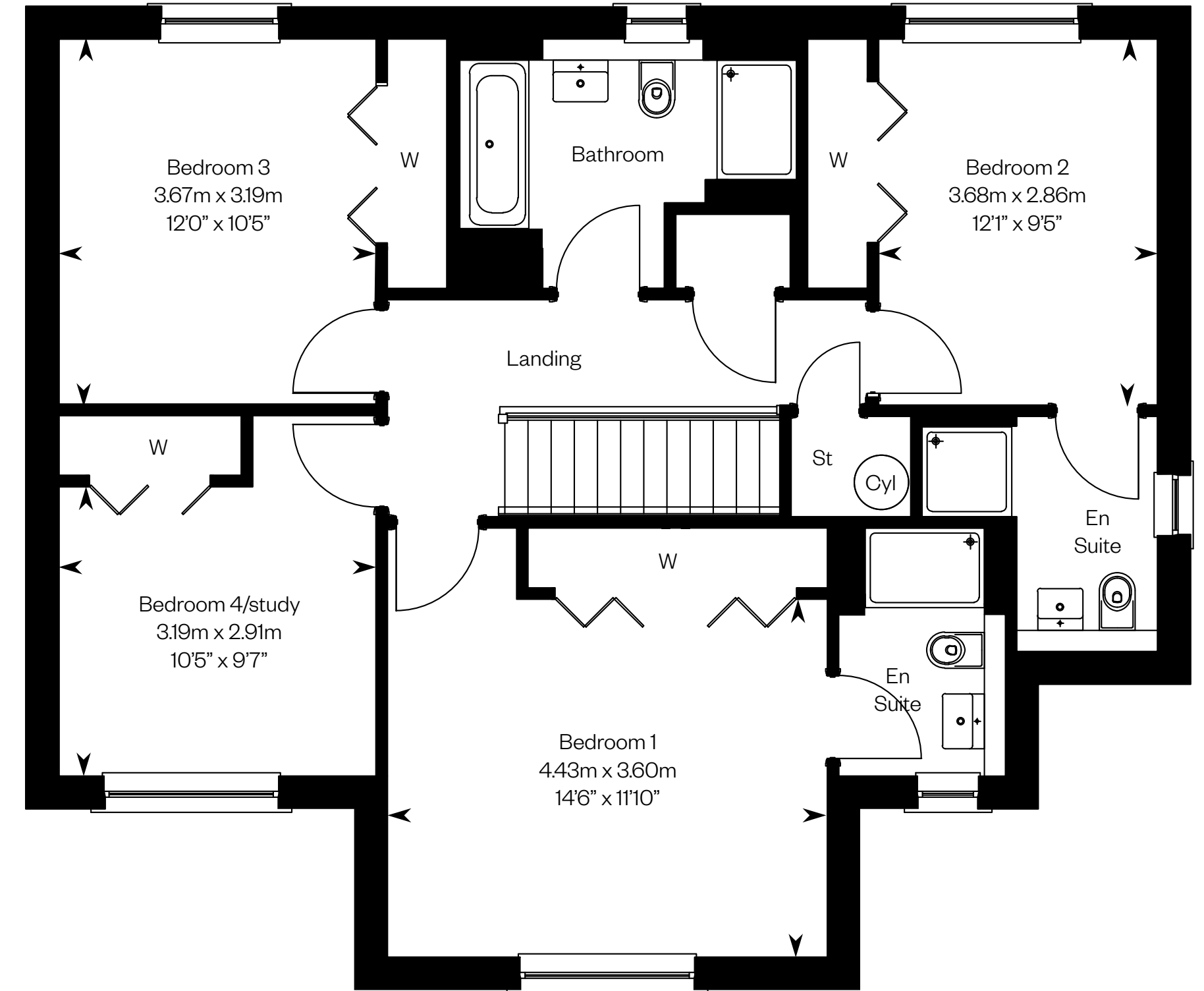
Computer generated image - The Cleland

The Cleland

Plots 18, 44 – as shown



Ground floor



First floor

Please ask your Sales Consultant for further details. ST: Store cupboard. W: Wardrobe.

IMPORTANT NOTICE TO CUSTOMERS: The Consumer Protection from Unfair Trading Regulations 2008. Cala Homes (East) Limited operates a policy of continual product development and the specifications outlined in this brochure are indicative only. The computer generated images and photographs do not necessarily represent the actual finishings/elevation or treatments, landscaping, furnishings and fittings at this development. Information contained is accurate at date of publication on 20.01.23. See the main brochure for the full Consumer Protection statement.

The Darroch

5 bedroom detached home

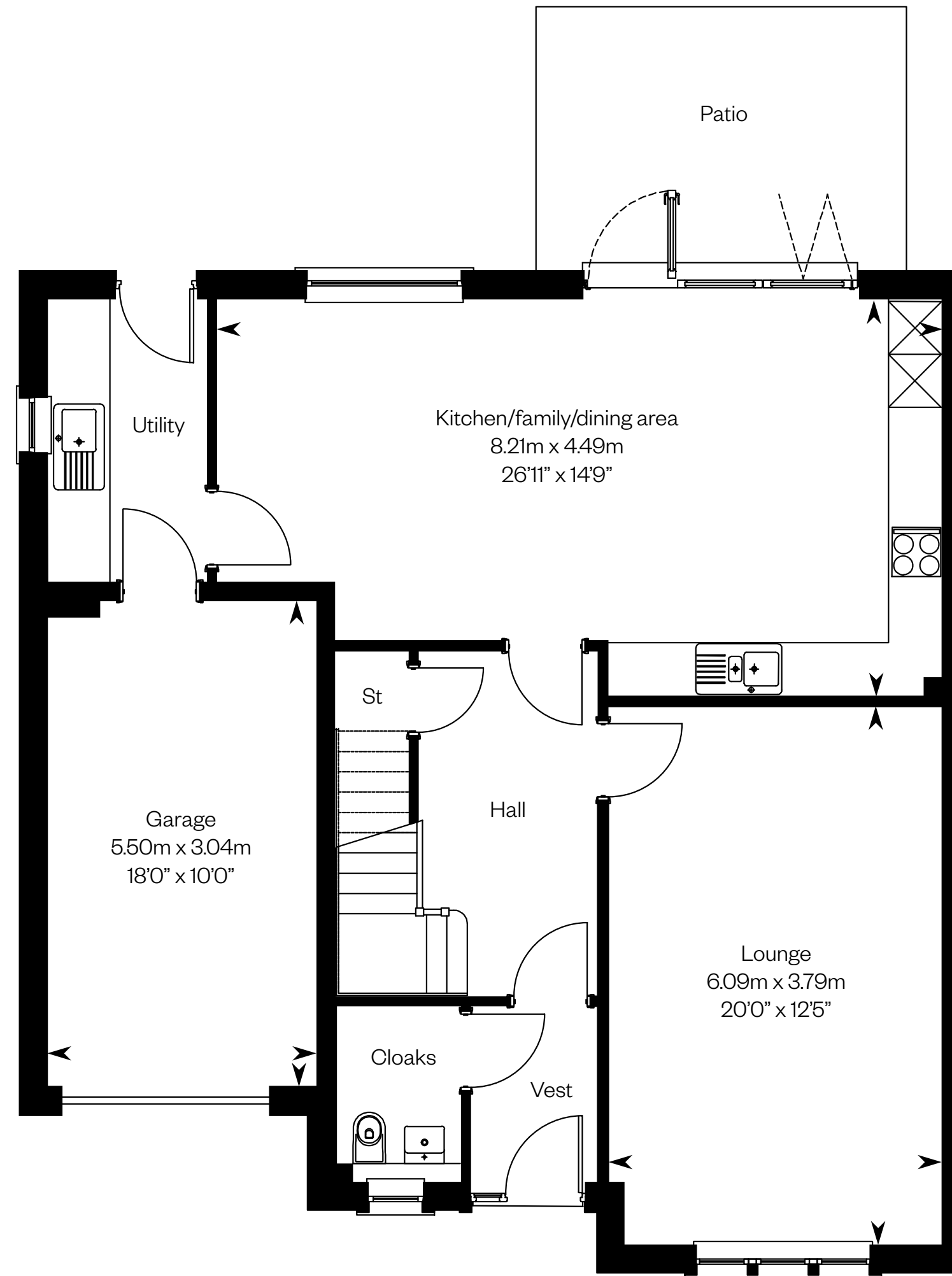


Computer generated image - The Darroch

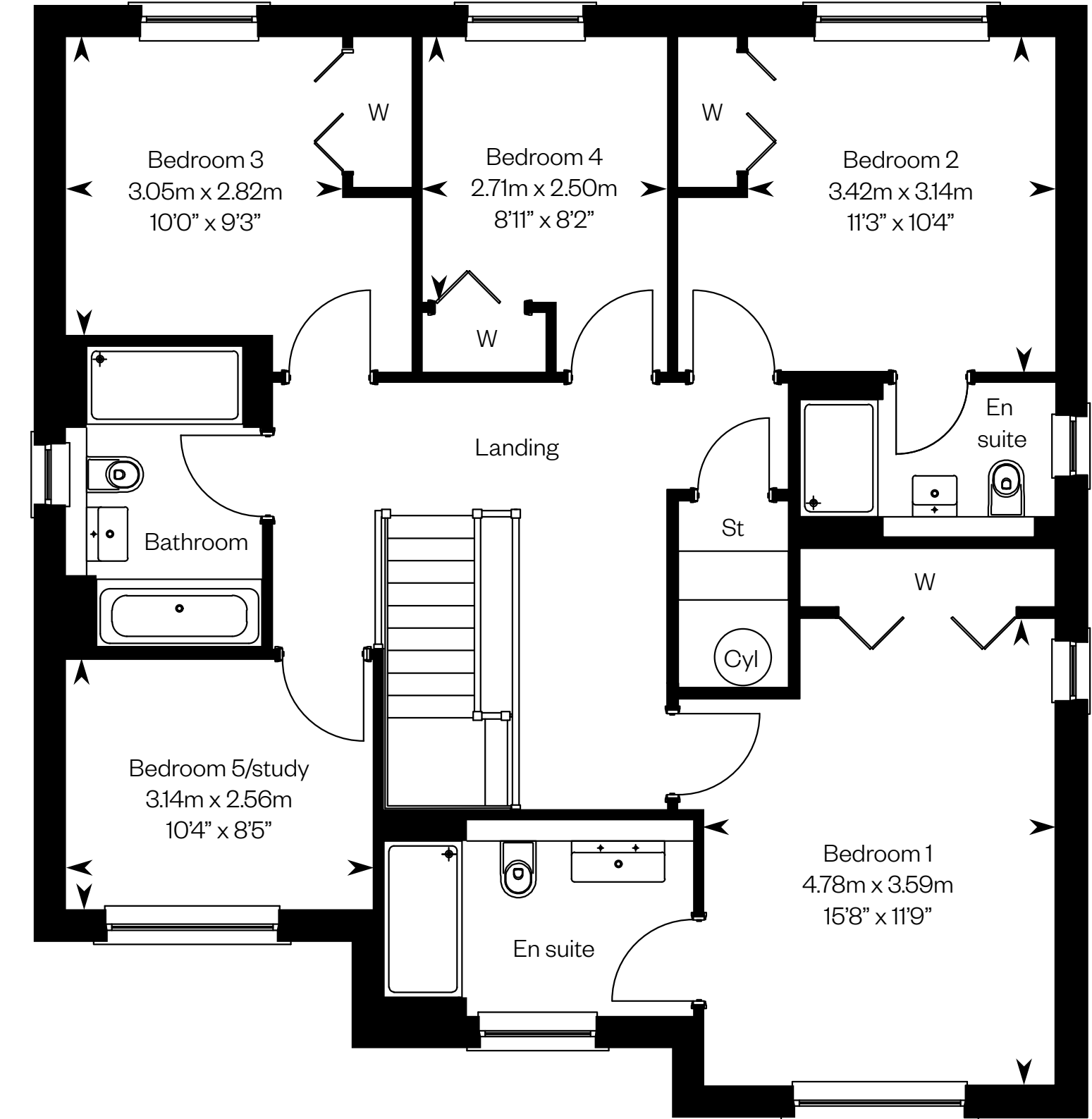
The Darroch

Plots 17, 26, 38, 40 – as shown

Plots 23, 28, 32 – handed



Ground floor



First floor

Please ask your Sales Consultant for further details. ST: Store cupboard. W: Wardrobe.

IMPORTANT NOTICE TO CUSTOMERS: The Consumer Protection from Unfair Trading Regulations 2008. Cala Homes (East) Limited operates a policy of continual product development and the specifications outlined in this brochure are indicative only. The computer generated images and photographs do not necessarily represent the actual finishings/elevation or treatments, landscaping, furnishings and fittings at this development. Information contained is accurate at date of publication on 20.01.23. See the main brochure for the full Consumer Protection statement.

The Dewar

5 bedroom detached home



Computer generated image - The Dewar

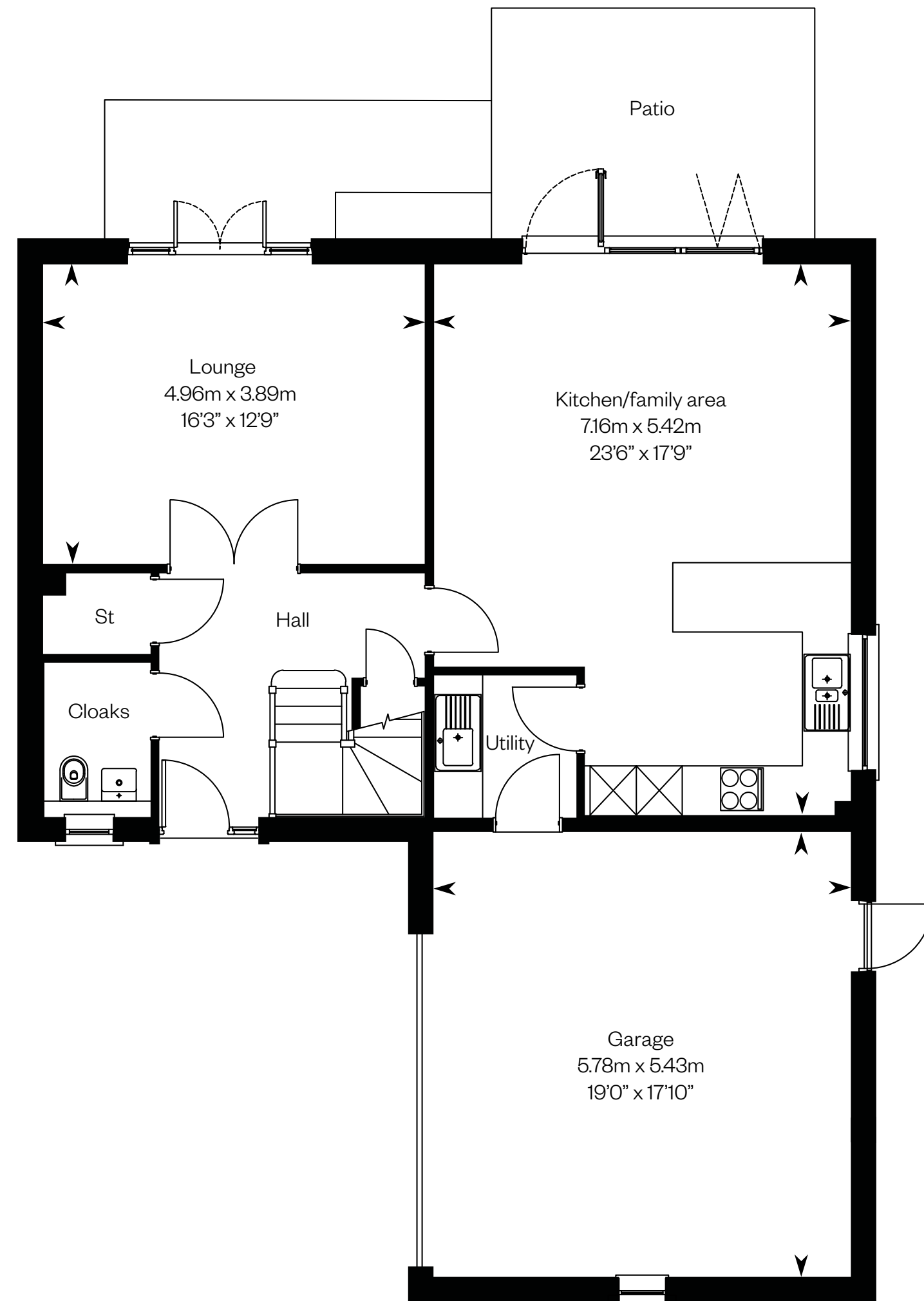
The Dewar

Plots 36, 51 – as shown

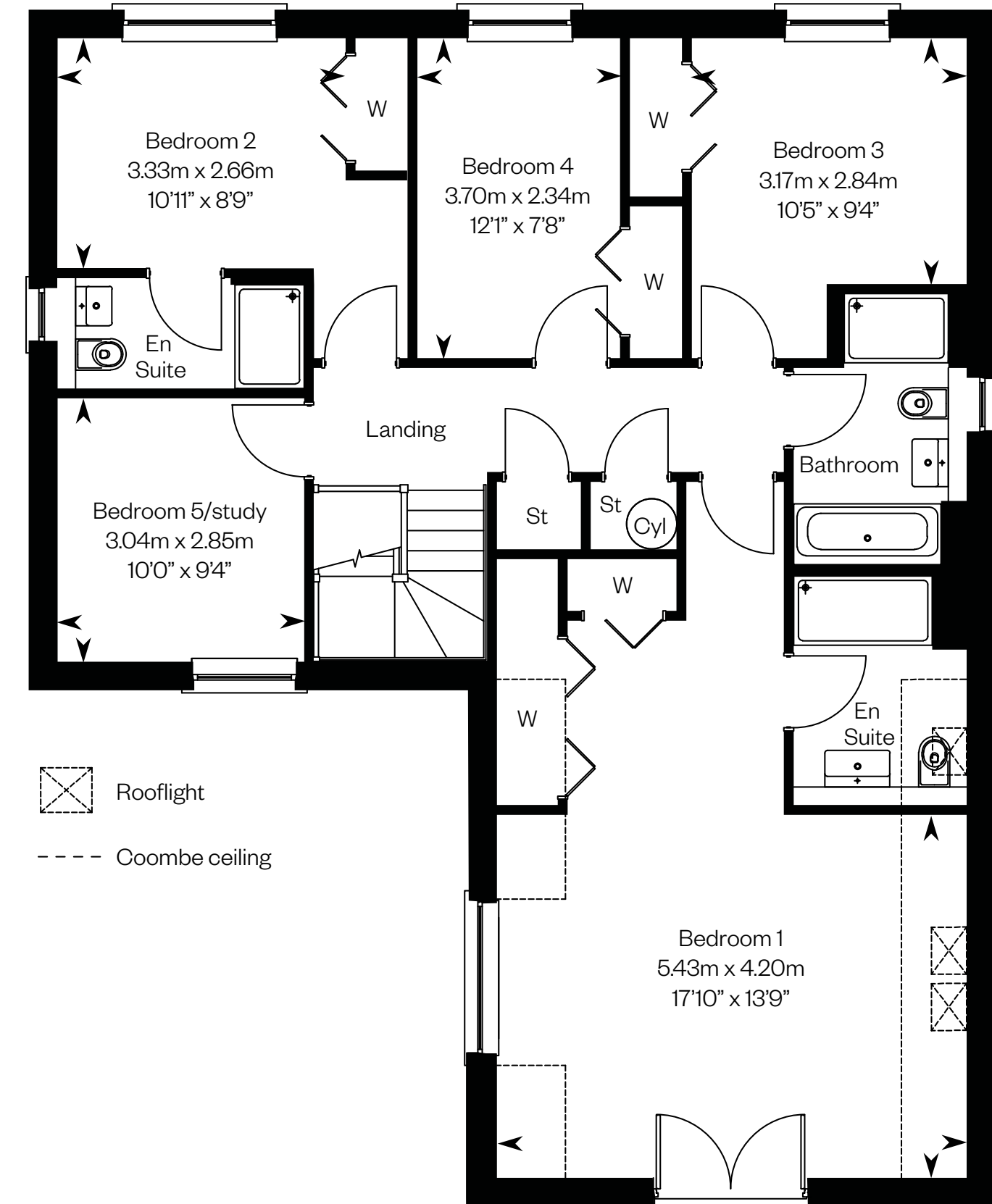
Plot 45 – handed

Plot 43 – has a slightly different layout.

Please speak to a sales advisor for details.



Ground floor



First floor

Please ask your Sales Consultant for further details. ST: Store cupboard. W: Wardrobe.

IMPORTANT NOTICE TO CUSTOMERS: The Consumer Protection from Unfair Trading Regulations 2008. Cala Homes (East) Limited operates a policy of continual product development and the specifications outlined in this brochure are indicative only. The computer generated images and photographs do not necessarily represent the actual finishings/elevation or treatments, landscaping, furnishings and fittings at this development. Information contained is accurate at date of publication on 20.01.23. See the main brochure for the full Consumer Protection statement.

The Elliot

4 bedroom detached home with study

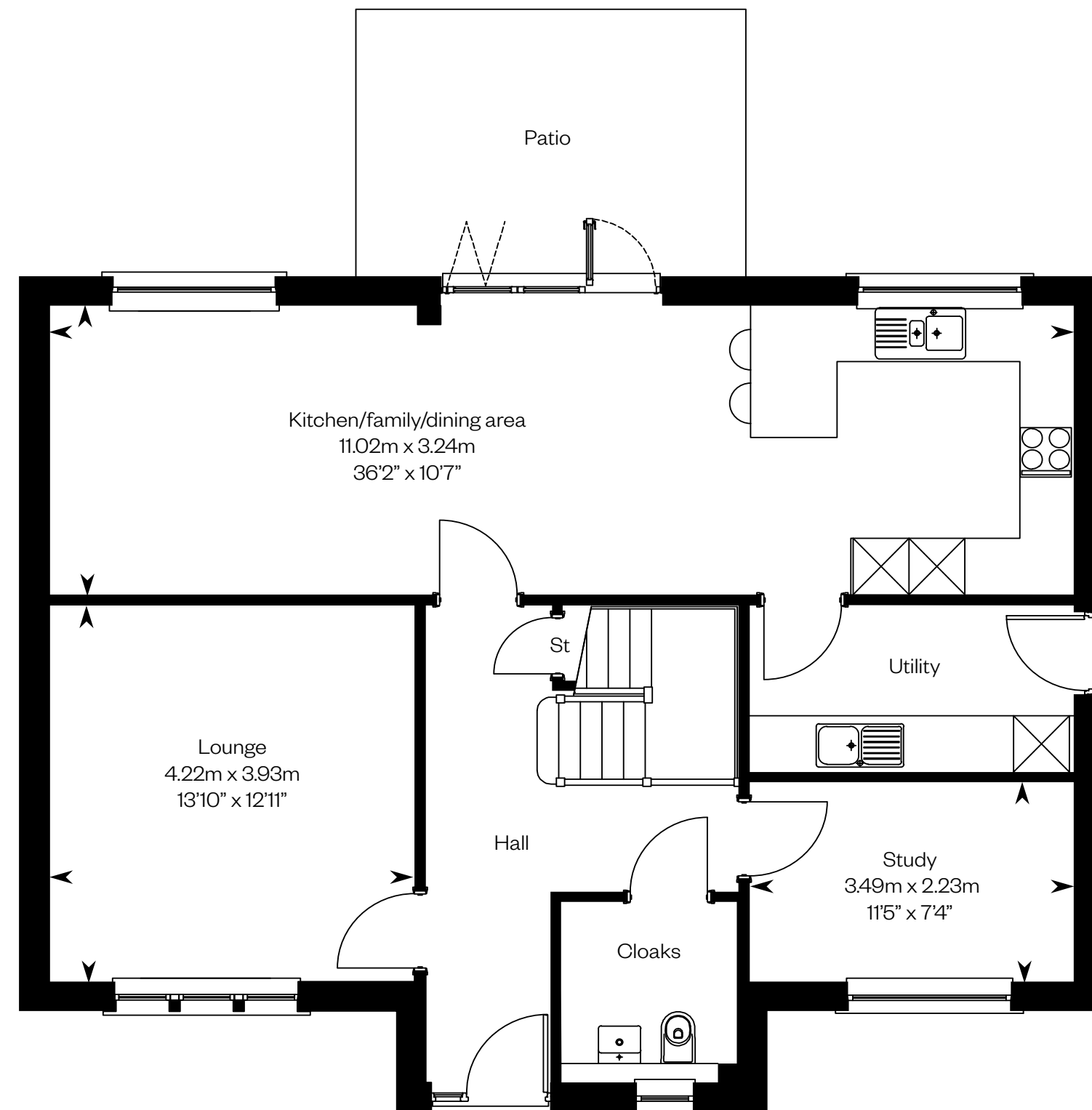


Computer generated image - The Elliot

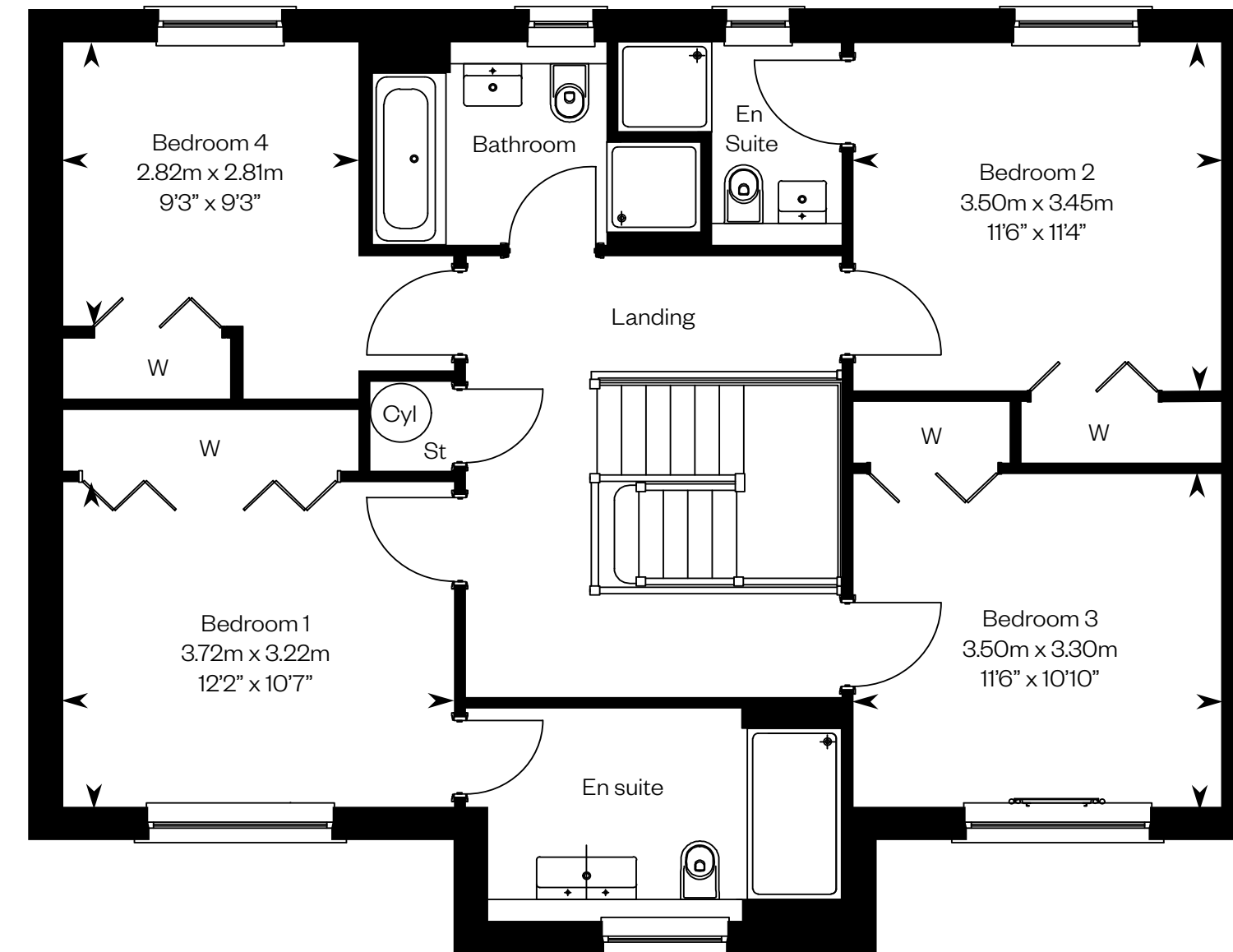
The Elliot

Plots 27, 56, 58 – as shown

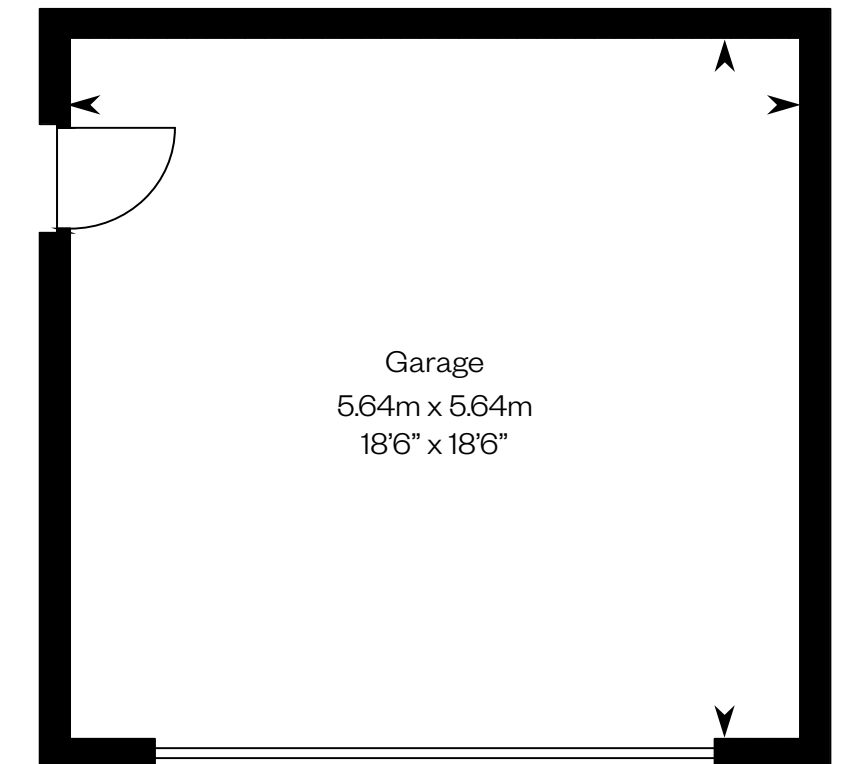
Plots 24, 35, 57, 59 – handed



Ground floor



First floor



Please ask your Sales Consultant for further details. ST: Store cupboard. W: Wardrobe.

IMPORTANT NOTICE TO CUSTOMERS: The Consumer Protection from Unfair Trading Regulations 2008. Cala Homes (East) Limited operates a policy of continual product development and the specifications outlined in this brochure are indicative only. The computer generated images and photographs do not necessarily represent the actual finishings/elevation or treatments, landscaping, furnishings and fittings at this development. Information contained is accurate at date of publication on 20.01.23. See the main brochure for the full Consumer Protection statement.

The Garvie

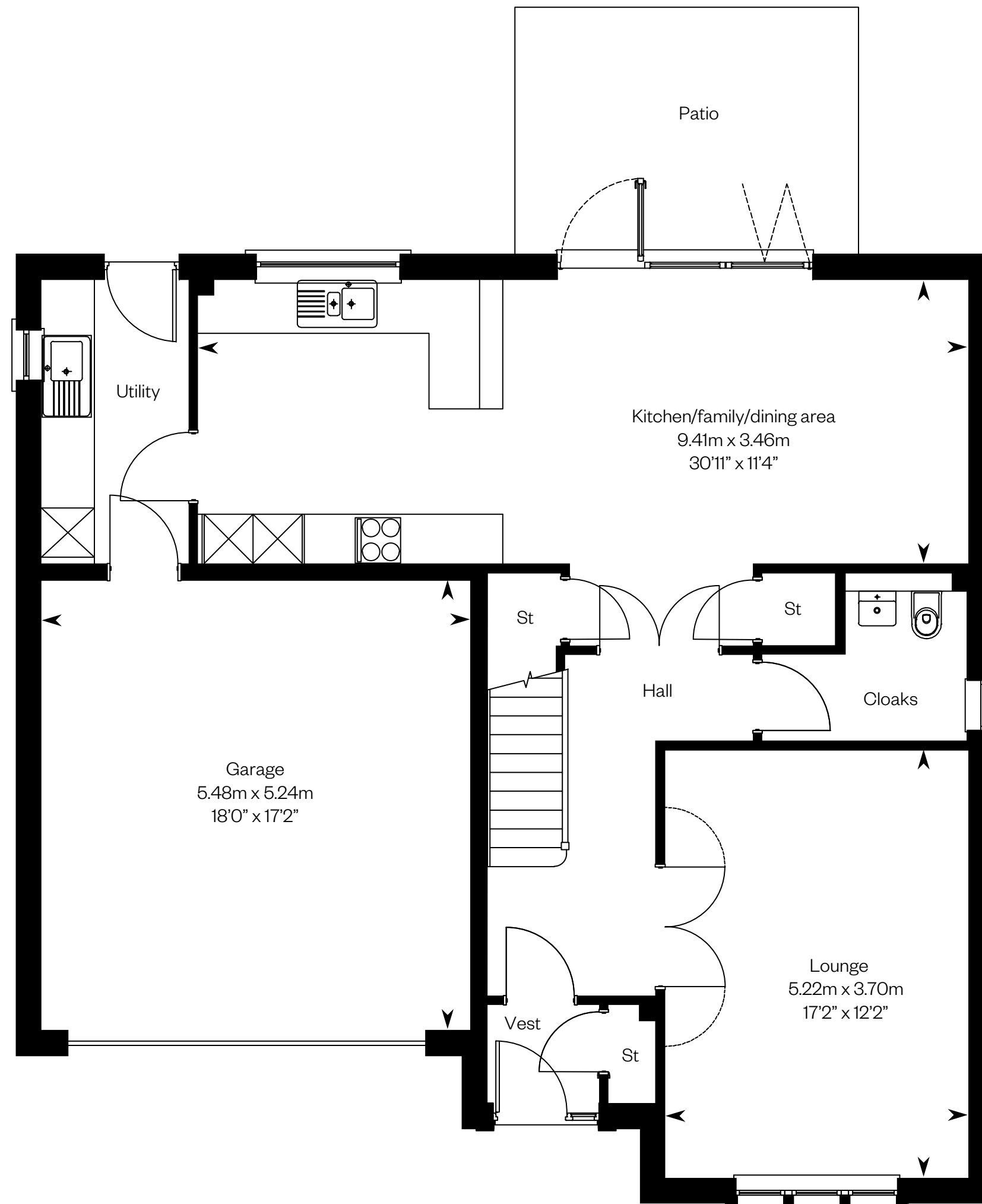
5 bedroom detached home



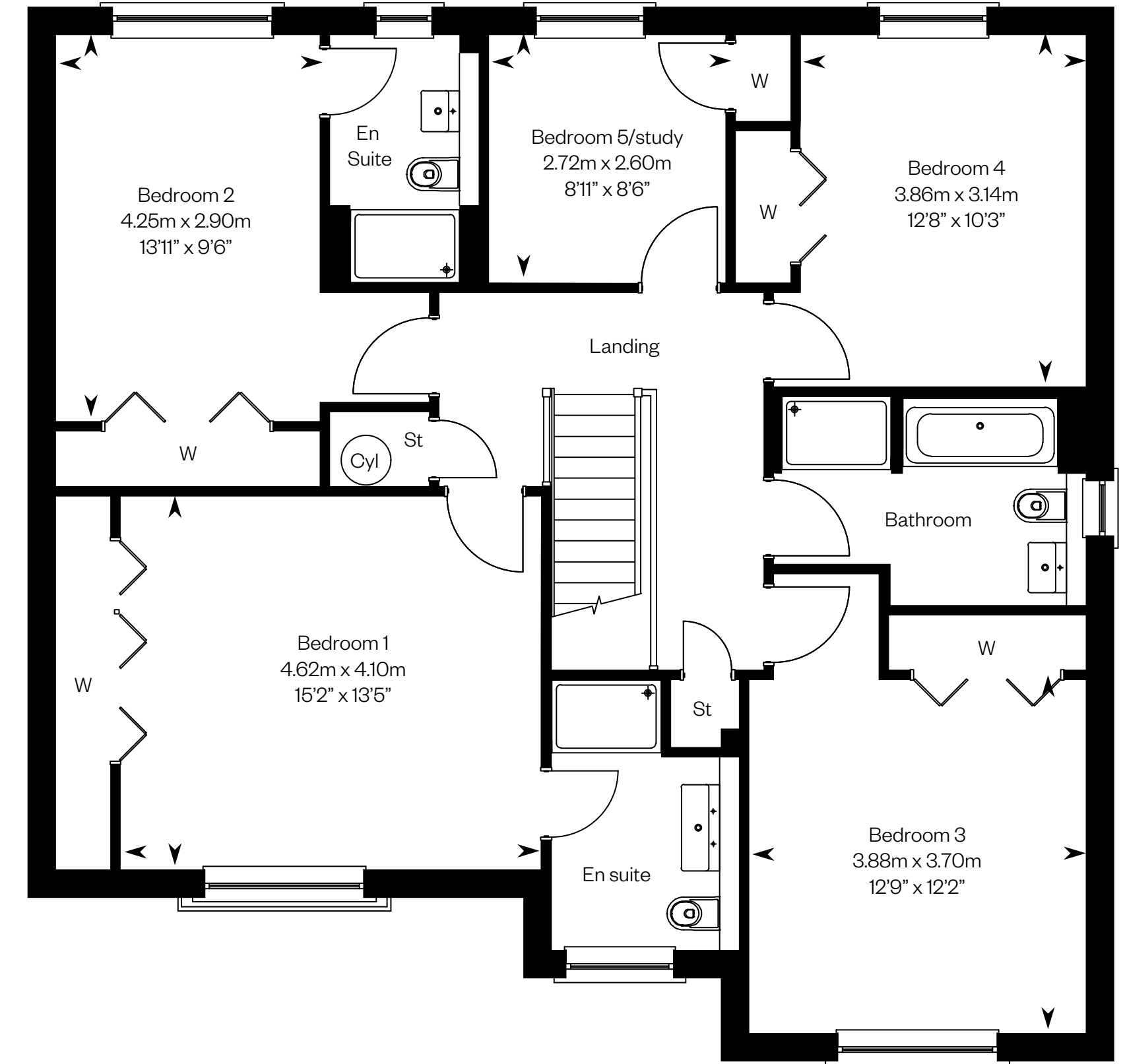
The Garvie

Plots 33, 37, 39, 41, 50 – as shown

Plots 20, 22, 34, 46, 47 – handed



Ground floor



First floor

Please ask your Sales Consultant for further details. ST: Store cupboard. W: Wardrobe.

IMPORTANT NOTICE TO CUSTOMERS: The Consumer Protection from Unfair Trading Regulations 2008. Cala Homes (East) Limited operates a policy of continual product development and the specifications outlined in this brochure are indicative only. The computer generated images and photographs do not necessarily represent the actual finishings/elevation or treatments, landscaping, furnishings and fittings at this development. Information contained is accurate at date of publication on 20.01.23. See the main brochure for the full Consumer Protection statement.

The Kennedy

5 bedroom detached home

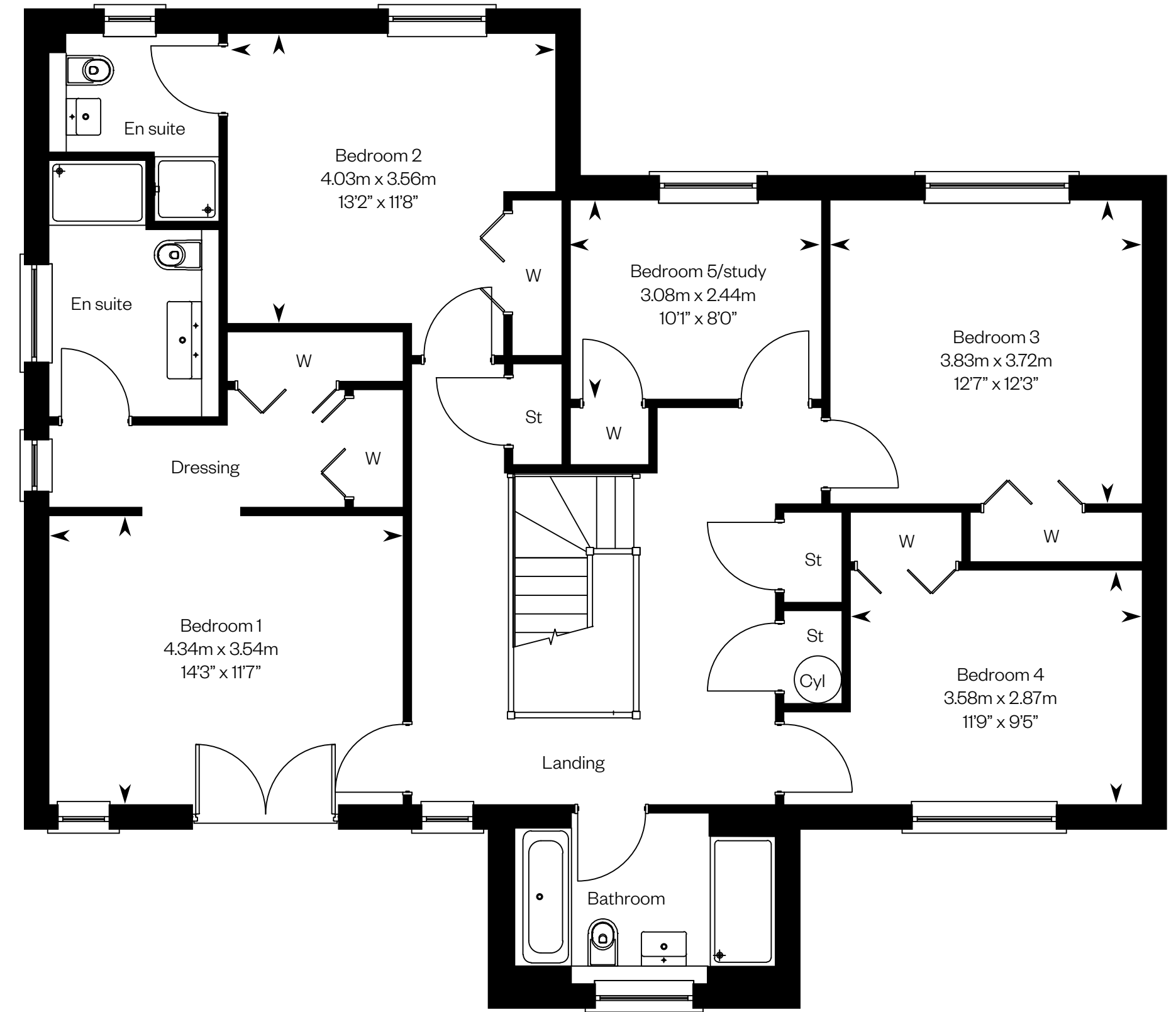


The Kennedy

Plots 21, 31 – handed



Ground floor



First floor

Please ask your Sales Consultant for further details. ST: Store cupboard. W: Wardrobe.

IMPORTANT NOTICE TO CUSTOMERS: The Consumer Protection from Unfair Trading Regulations 2008. Cala Homes (East) Limited operates a policy of continual product development and the specifications outlined in this brochure are indicative only. The computer generated images and photographs do not necessarily represent the actual finishings/elevation or treatments, landscaping, furnishings and fittings at this development. Information contained is accurate at date of publication on 20.01.23. See the main brochure for the full Consumer Protection statement.

The Lowther

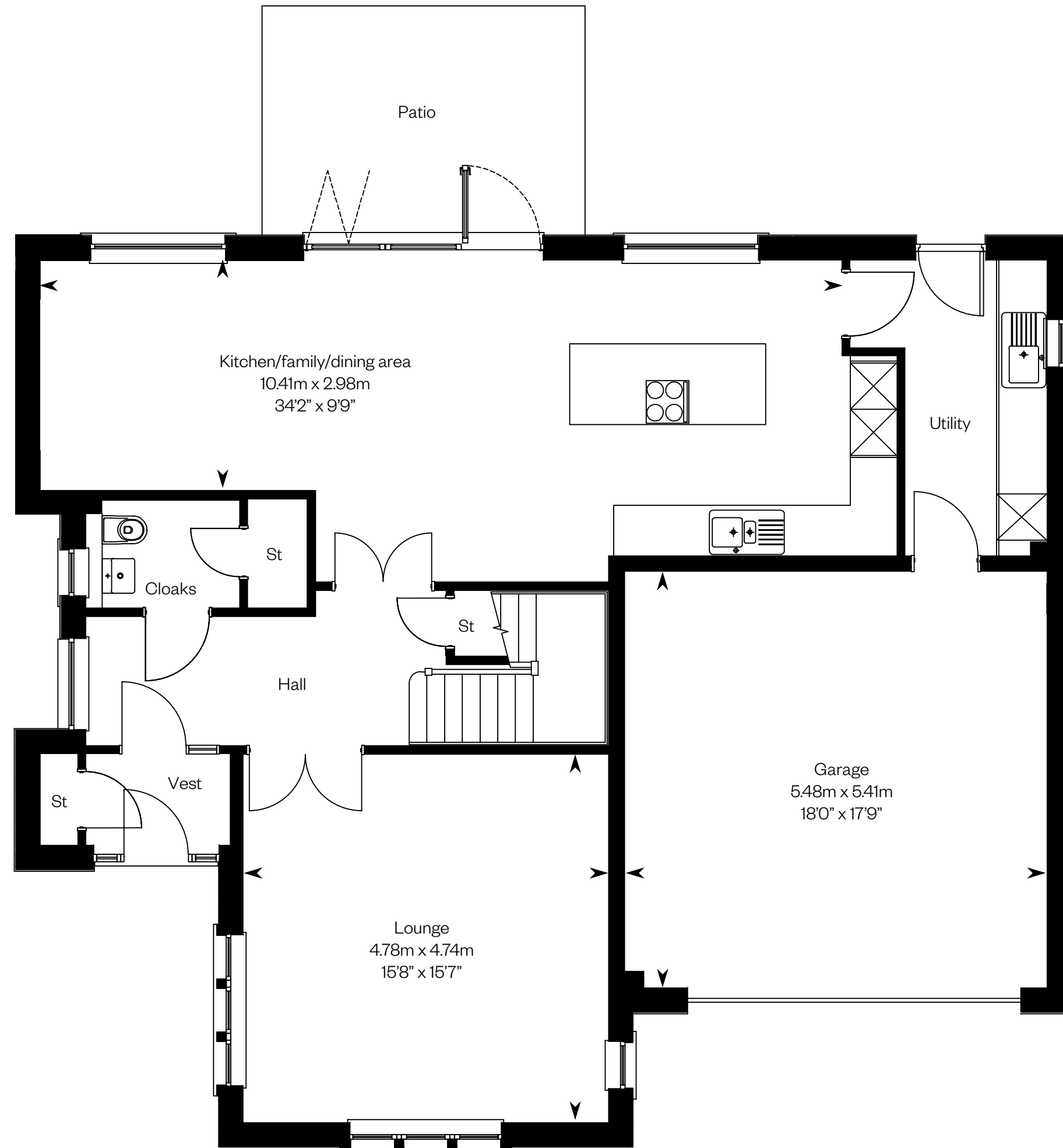
5 bedroom detached home



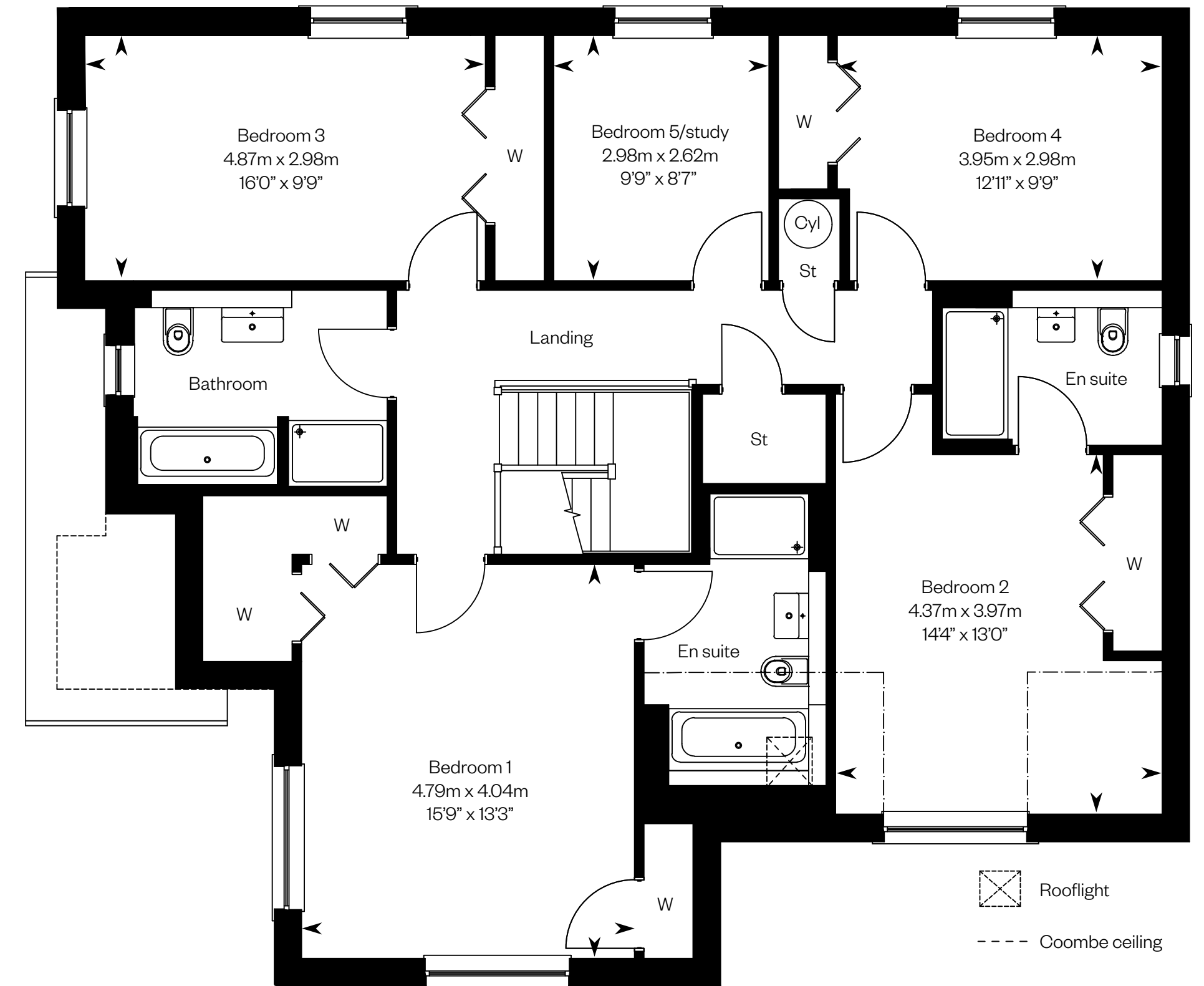
The Lowther

Plots 30, 49 – as shown

Plots 42,48 – handed



Ground floor



First floor

Please ask your Sales Consultant for further details. ST: Store cupboard. W: Wardrobe.

IMPORTANT NOTICE TO CUSTOMERS: The Consumer Protection from Unfair Trading Regulations 2008. Cala Homes (East) Limited operates a policy of continual product development and the specifications outlined in this brochure are indicative only. The computer generated images and photographs do not necessarily represent the actual finishings/elevation or treatments, landscaping, furnishings and fittings at this development. Information contained is accurate at date of publication on 20.01.23. See the main brochure for the full Consumer Protection statement.

The MacRae

5 bedroom detached home with study

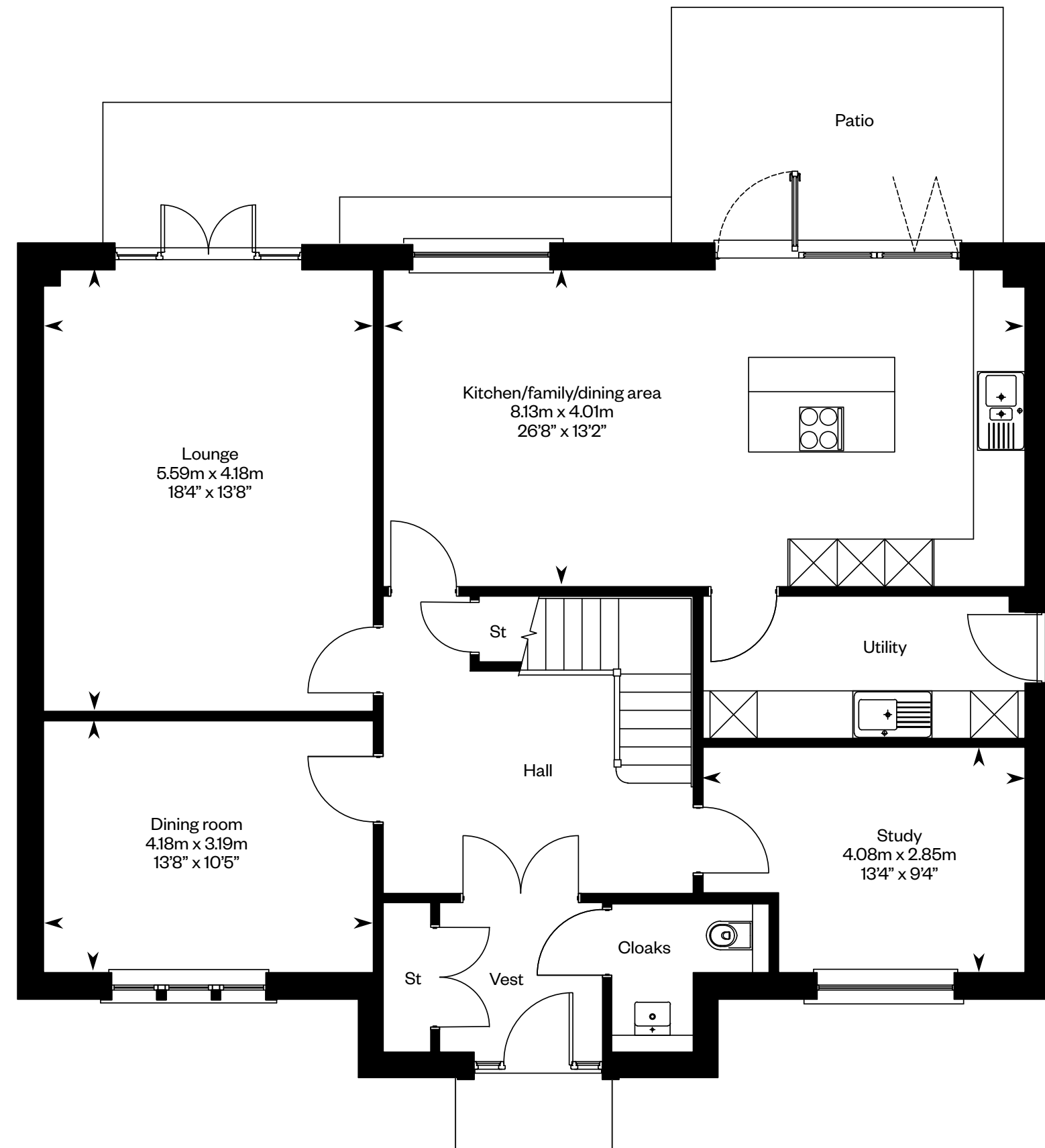


Computer generated image - The MacRae

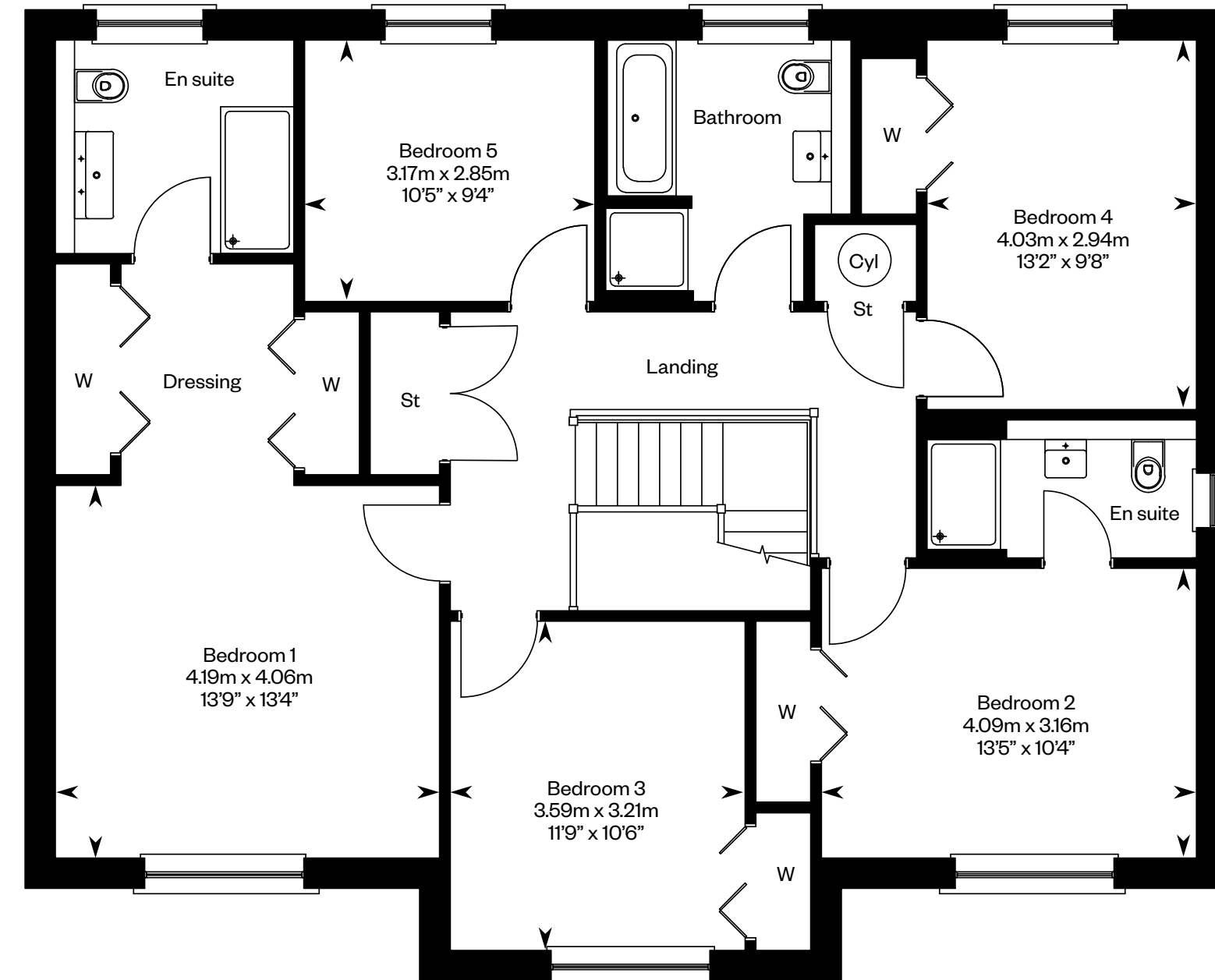
The MacRae

Plots 19, 29, 55, 60 – as shown

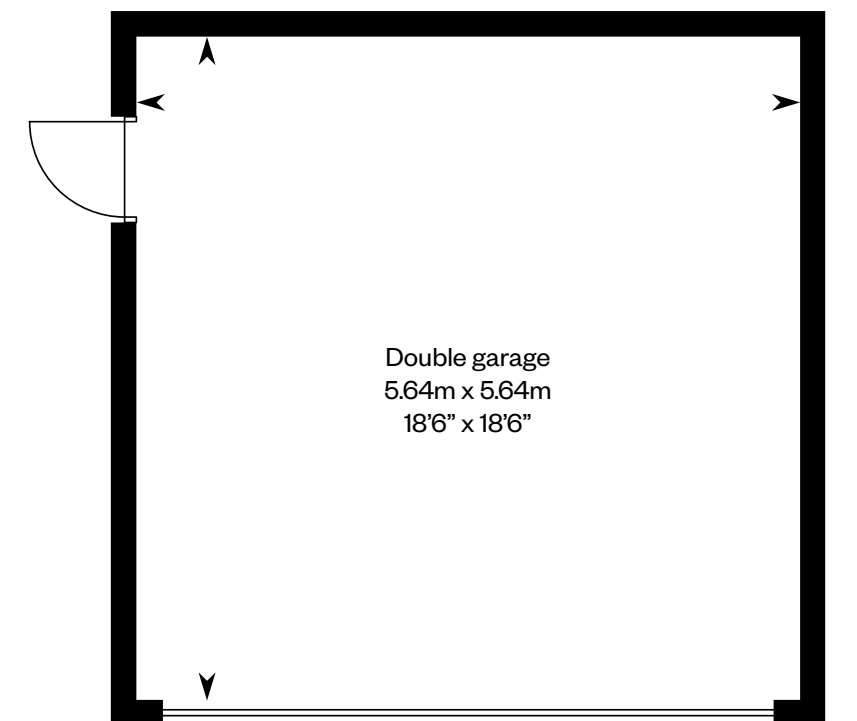
Plot 16 – handed



Ground floor



First floor



Please ask your Sales Consultant for further details. ST: Store cupboard. W: Wardrobe.

IMPORTANT NOTICE TO CUSTOMERS: The Consumer Protection from Unfair Trading Regulations 2008. Cala Homes (East) Limited operates a policy of continual product development and the specifications outlined in this brochure are indicative only. The computer generated images and photographs do not necessarily represent the actual finishings/elevation or treatments, landscaping, furnishings and fittings at this development. Information contained is accurate at date of publication on 20.01.23. See the main brochure for the full Consumer Protection statement.

The Melville

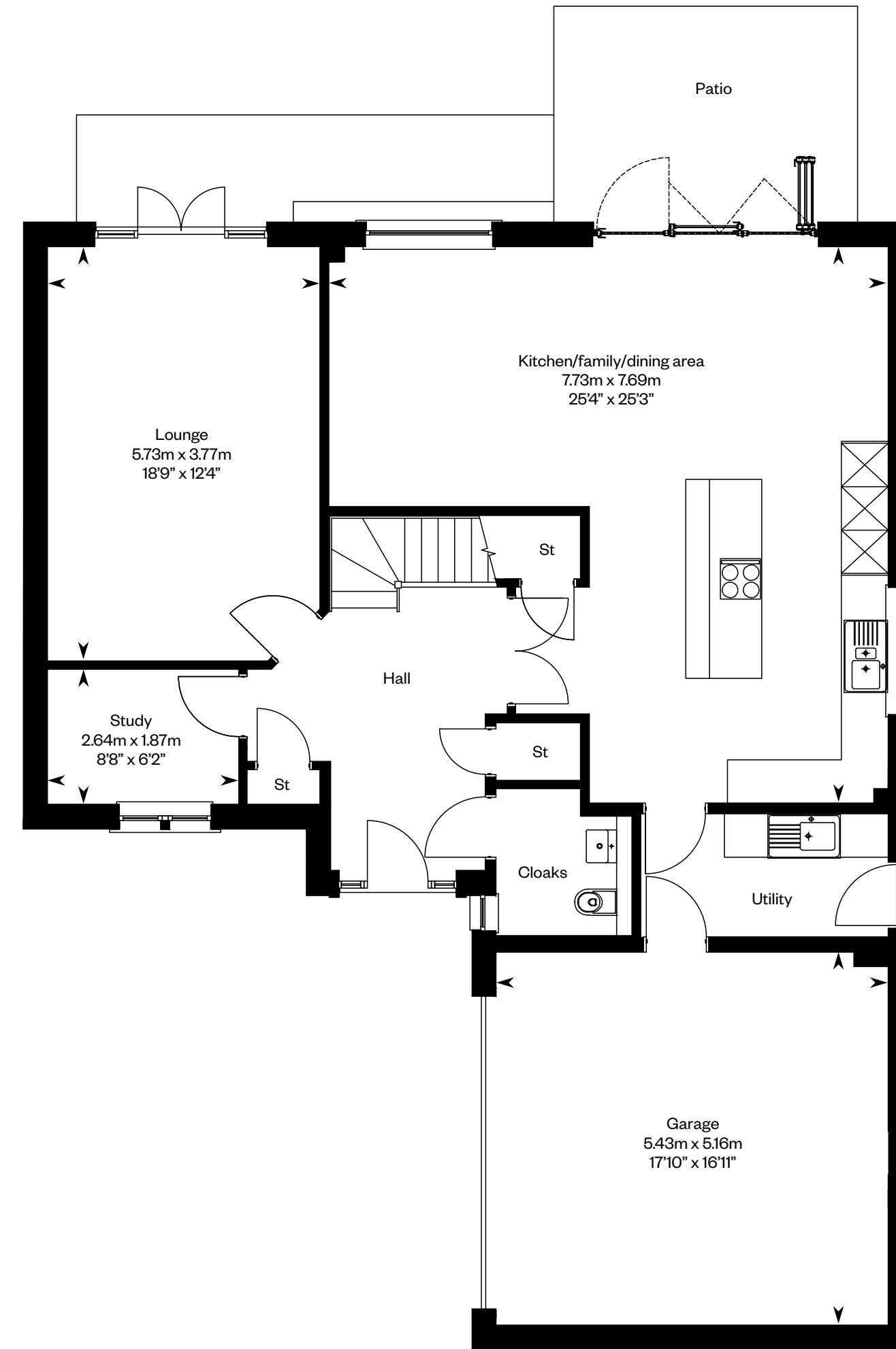
5 bedroom detached home with study



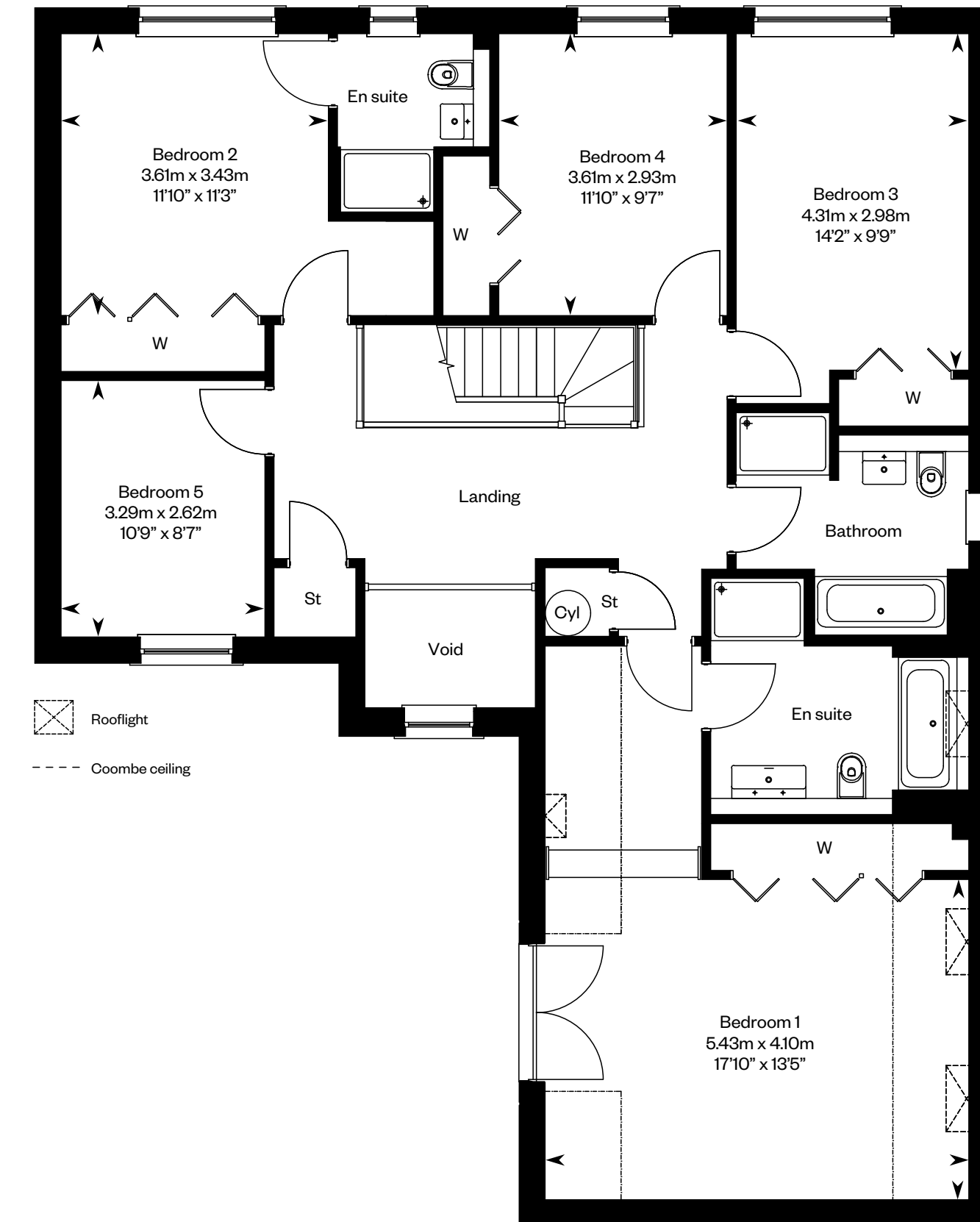
The Melville

Plot 52 – as shown

Plot 25 – handed



Ground floor



First floor

Please ask your Sales Consultant for further details. ST: Store cupboard. W: Wardrobe.

IMPORTANT NOTICE TO CUSTOMERS: The Consumer Protection from Unfair Trading Regulations 2008. Cala Homes (East) Limited operates a policy of continual product development and the specifications outlined in this brochure are indicative only. The computer generated images and photographs do not necessarily represent the actual finishings/elevation or treatments, landscaping, furnishings and fittings at this development. Information contained is accurate at date of publication on 20.01.23. See the main brochure for the full Consumer Protection statement.

The Moncrief

5 bedroom detached home

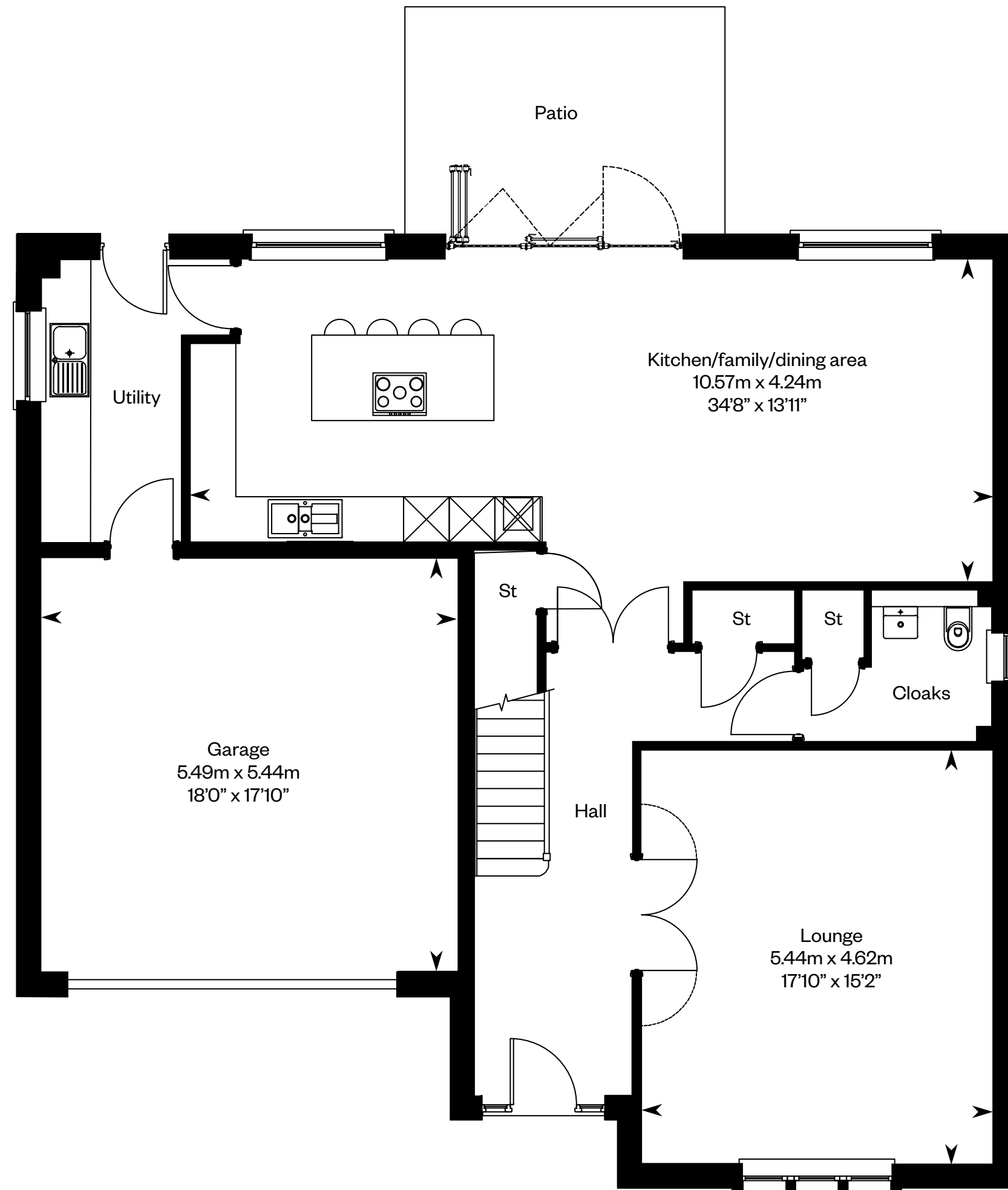


Computer generated image - The Moncrief

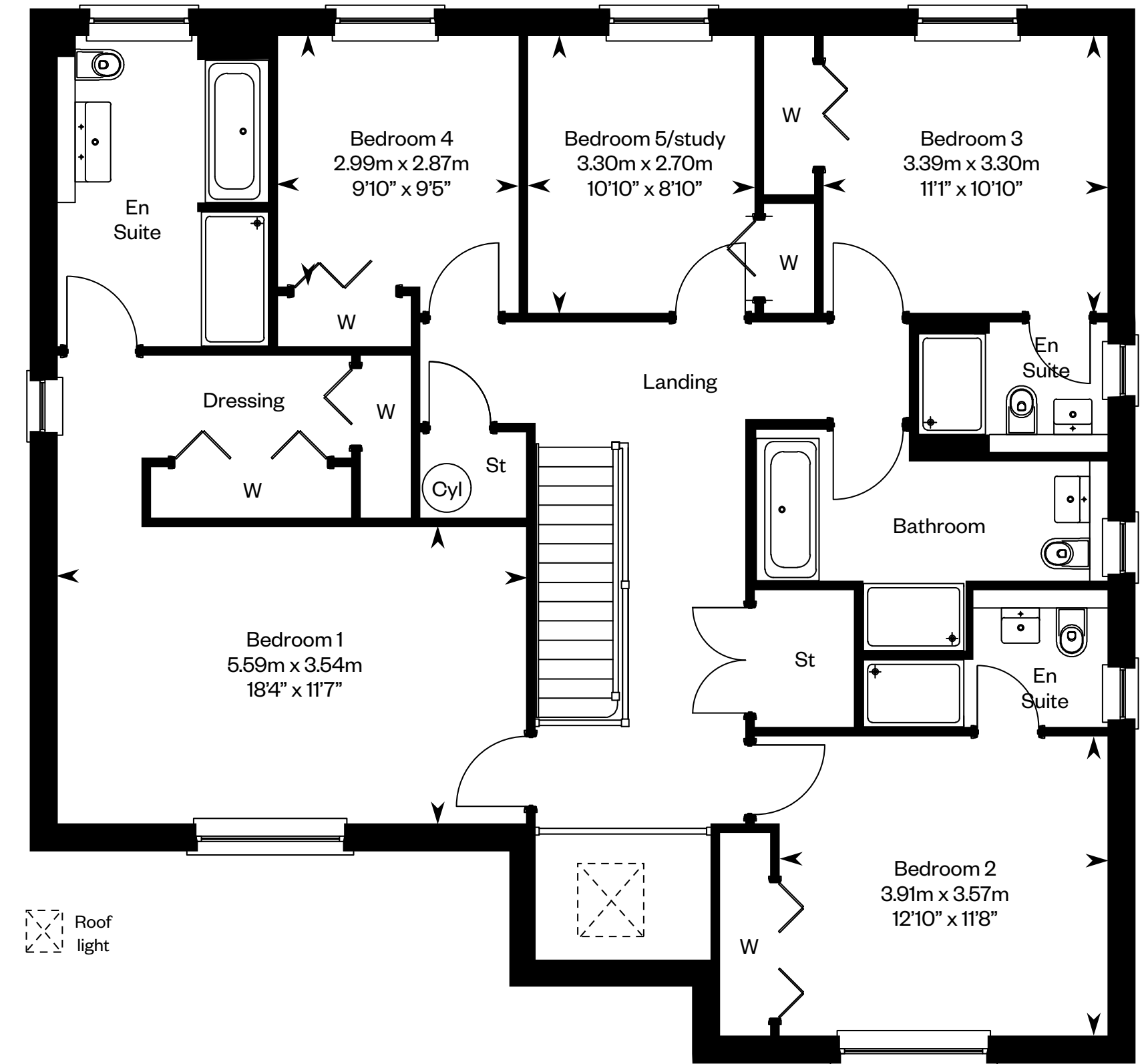
The Moncrief

Plot 54 – as shown

Plot 53 – handed



Ground floor



First floor

Please ask your Sales Consultant for further details. ST: Store cupboard. W: Wardrobe.

IMPORTANT NOTICE TO CUSTOMERS: The Consumer Protection from Unfair Trading Regulations 2008. Cala Homes (East) Limited operates a policy of continual product development and the specifications outlined in this brochure are indicative only. The computer generated images and photographs do not necessarily represent the actual finishings/elevation or treatments, landscaping, furnishings and fittings at this development. Information contained is accurate at date of publication on 20.01.23. See the main brochure for the full Consumer Protection statement.