



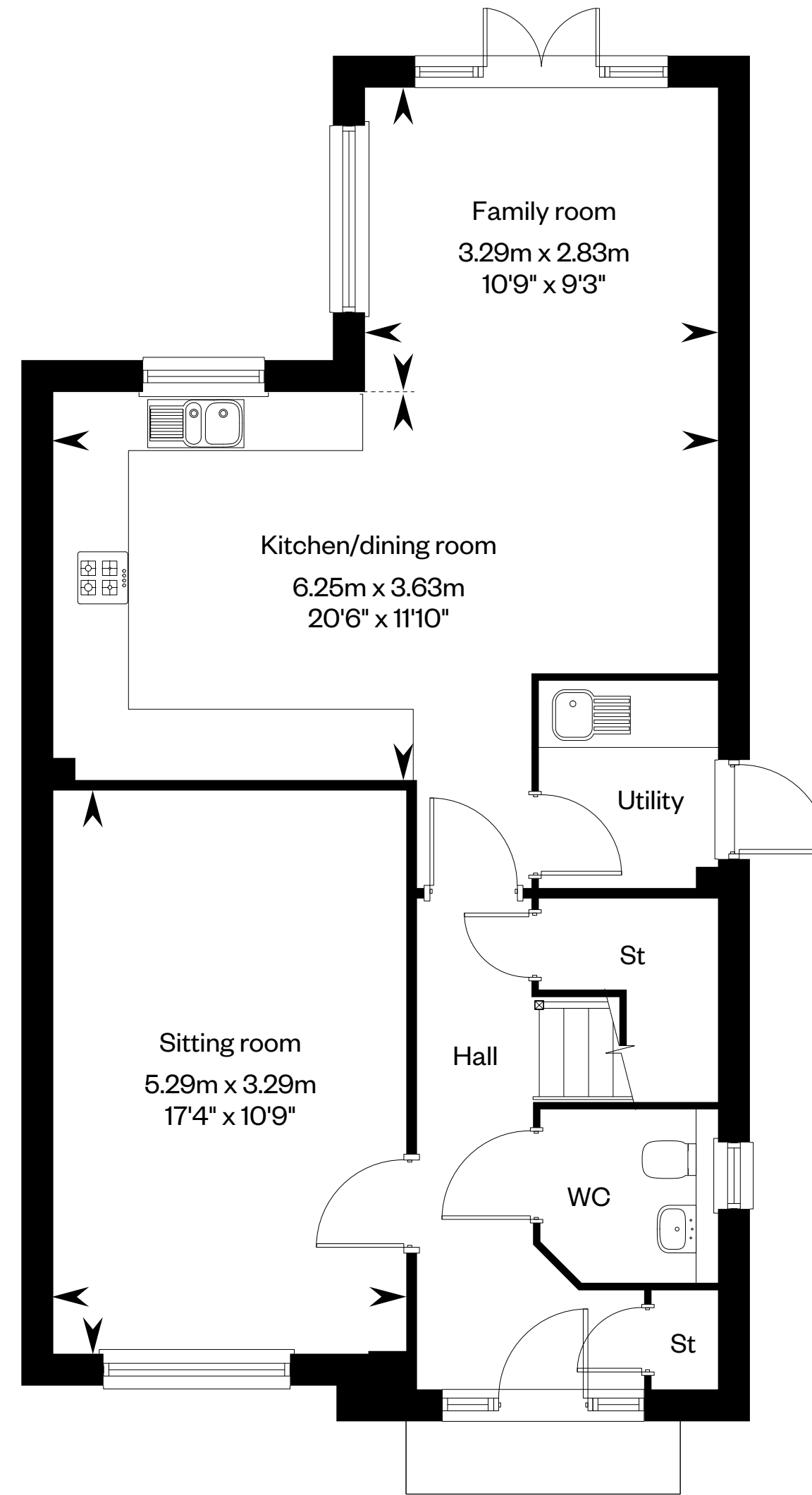
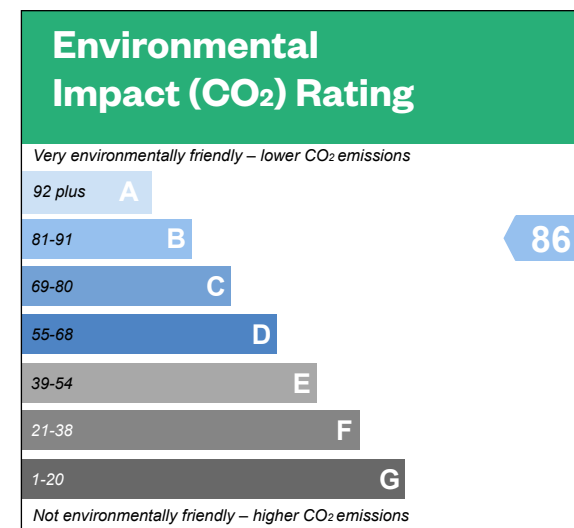
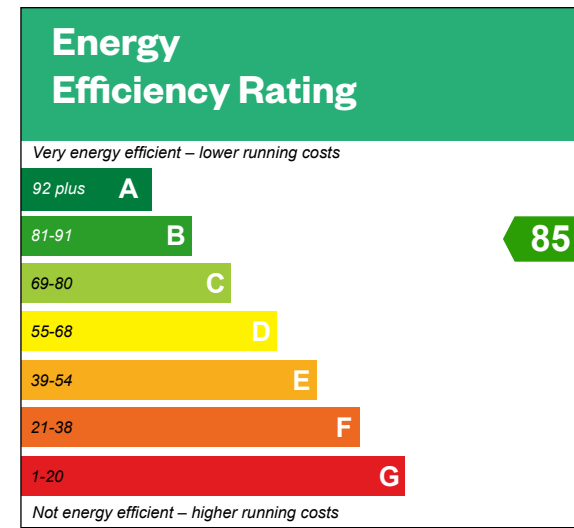
The Holme

4 bedroom detached and semi-detached house with garage



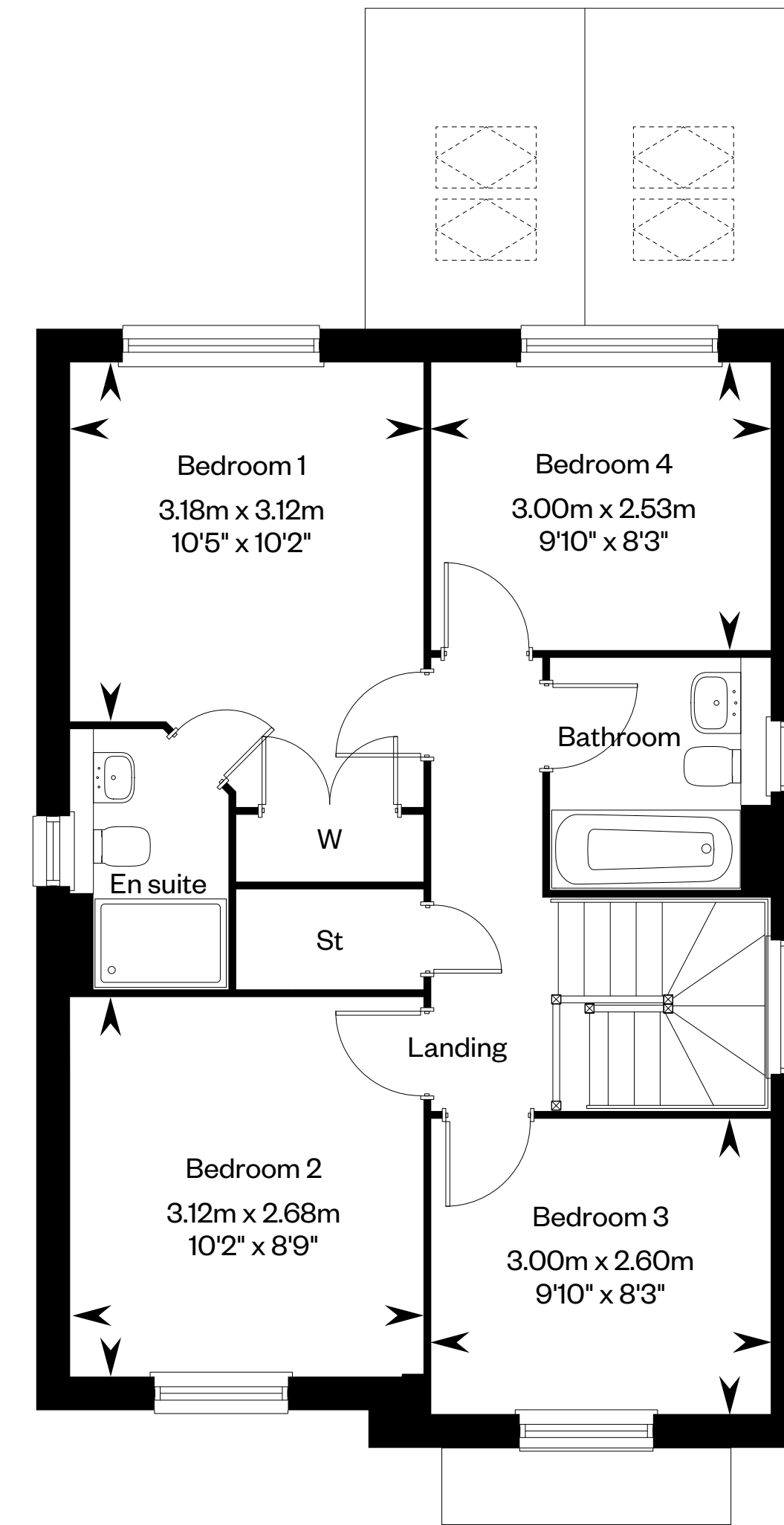
The Holme

Plots 277, 279, 283 & 285 – as shown
 Plots 262, 263, 267, 268, 271–273,
 276, 278, 282 & 284 – handed



Ground floor

No window to Plots
276, 277, 278, 279,
282, 283, 284, 285



First floor

Please ask your Sales Consultant for further details. St: Storage cupboard. W: Wardrobe. ☒: Roof light.

IMPORTANT NOTICE TO CUSTOMERS: The Consumer Protection from Unfair Trading Regulations 2008. Cala Homes (North Home Counties) Limited operates a policy of continual product development and the specifications outlined in this brochure are indicative only. The computer generated images and photographs do not necessarily represent the actual finishings/ elevation or treatments, landscaping, furnishings and fittings at this development. Information contained is accurate at date of publication on 13.12.22. See the main brochure for the full Consumer Protection statement. This is a Predicted Energy Assessment for properties that are incomplete. Once the property is completed, this rating will be updated and an official Energy Performance Certificate will be created for the property.