

The Allan

3 bedroom semi-detached or terraced home

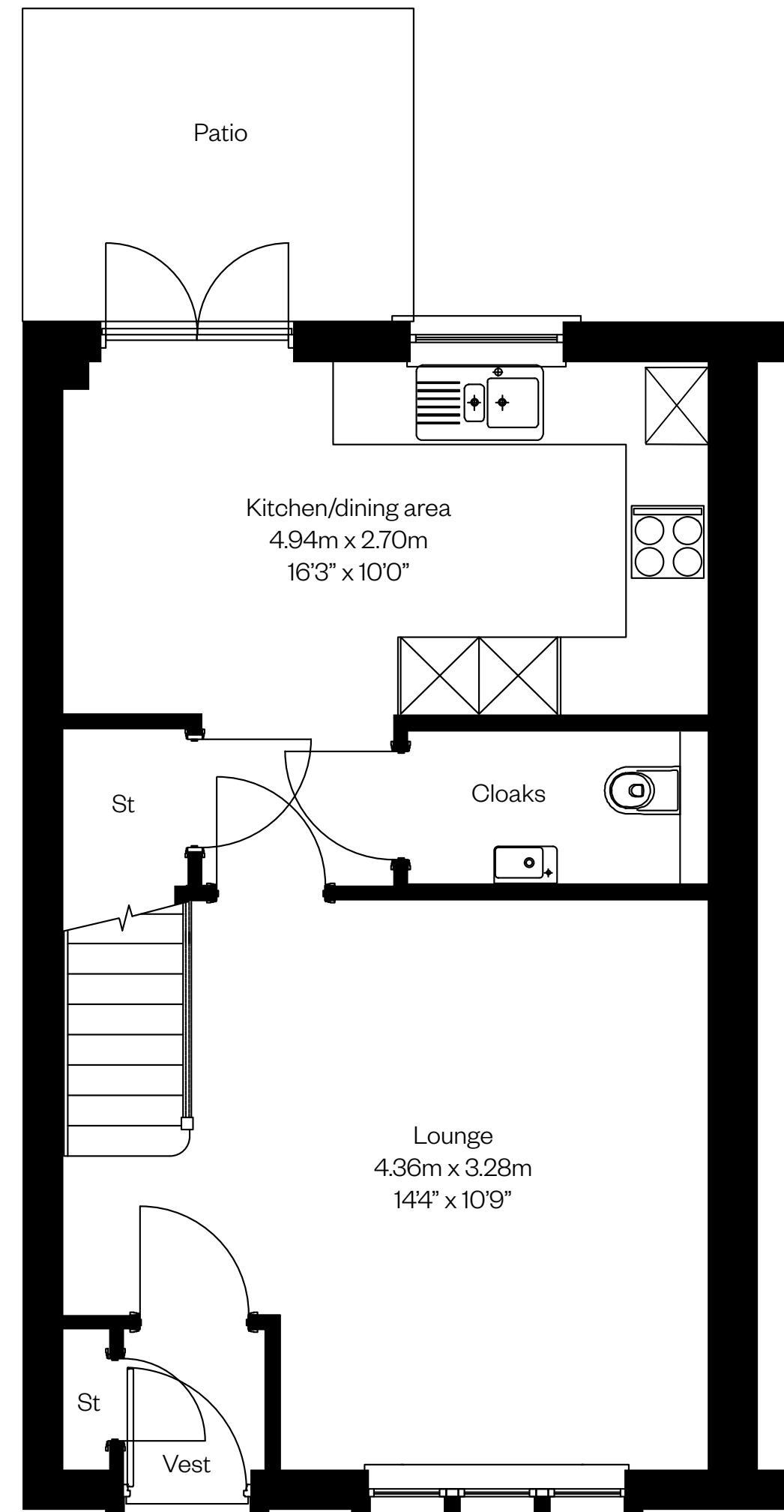


Computer generated image - The Allan

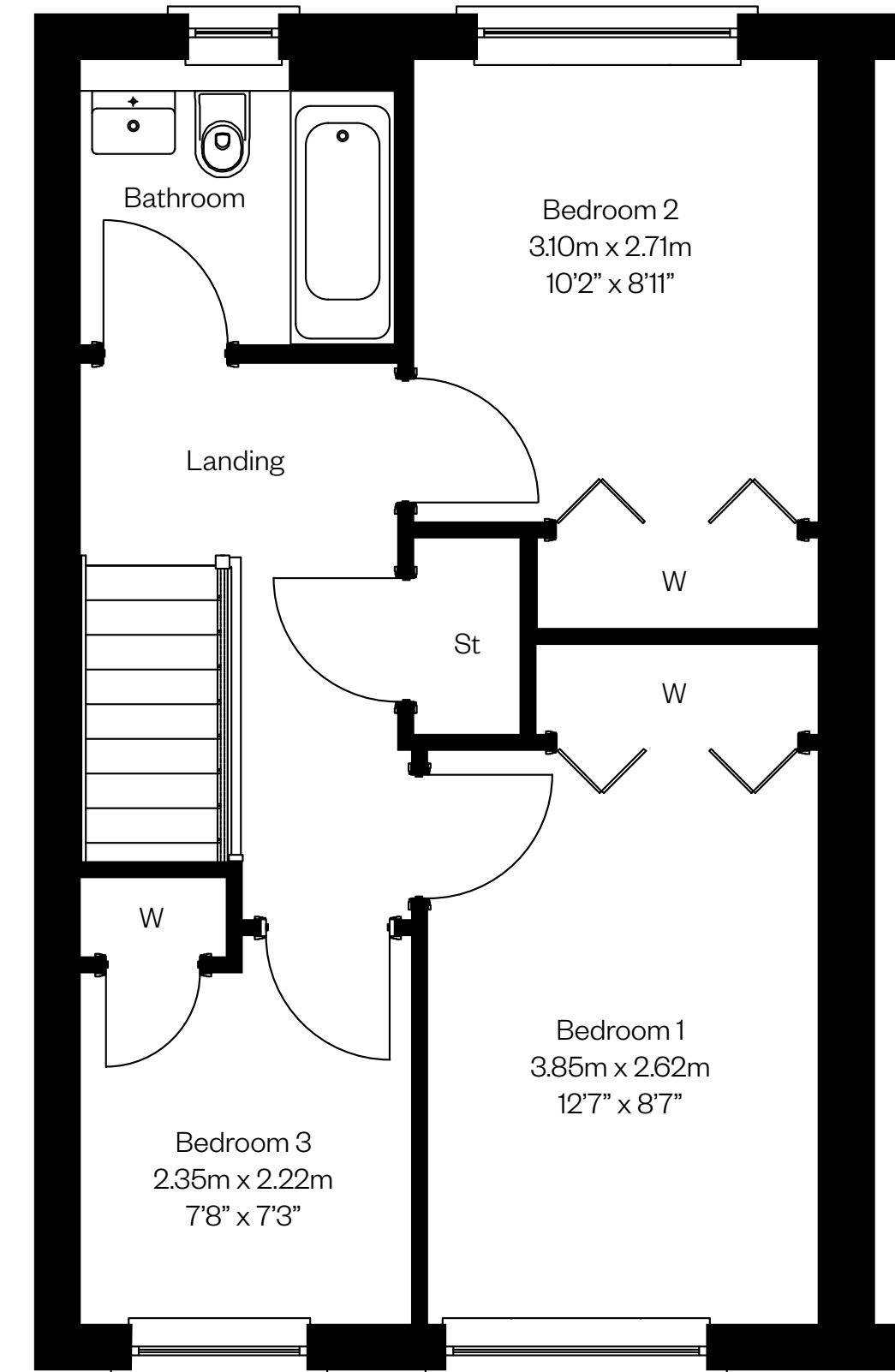
The Allan

First Phase

Plots 157, 160, 161, 162, 163, 164, 165 – as shown



Ground floor



First floor

Please ask your Sales Consultant for further details. ST: Store cupboard. W: Wardrobe.

IMPORTANT NOTICE TO CUSTOMERS: The Consumer Protection from Unfair Trading Regulations 2008. Cala Homes (East) Limited operates a policy of continual product development and the specifications outlined in this brochure are indicative only. The computer generated images and photographs do not necessarily represent the actual finishings/elevation or treatments, landscaping, furnishings and fittings at this development. Information contained is accurate at date of publication on 24.04.23. See the main brochure for the full Consumer Protection statement.

The Arran

3 bedroom semi-detached or terraced home

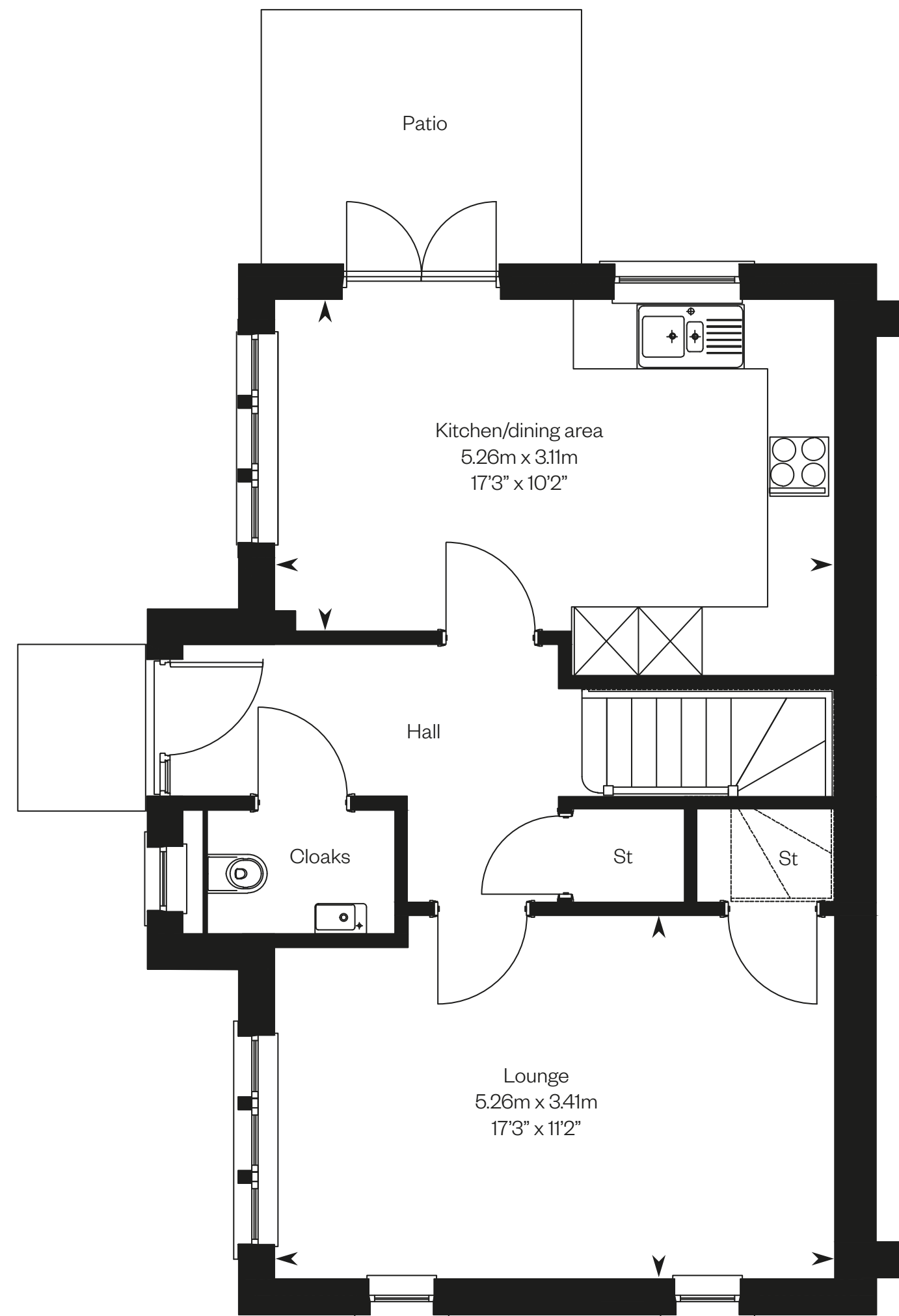


Computer generated image - The Arran

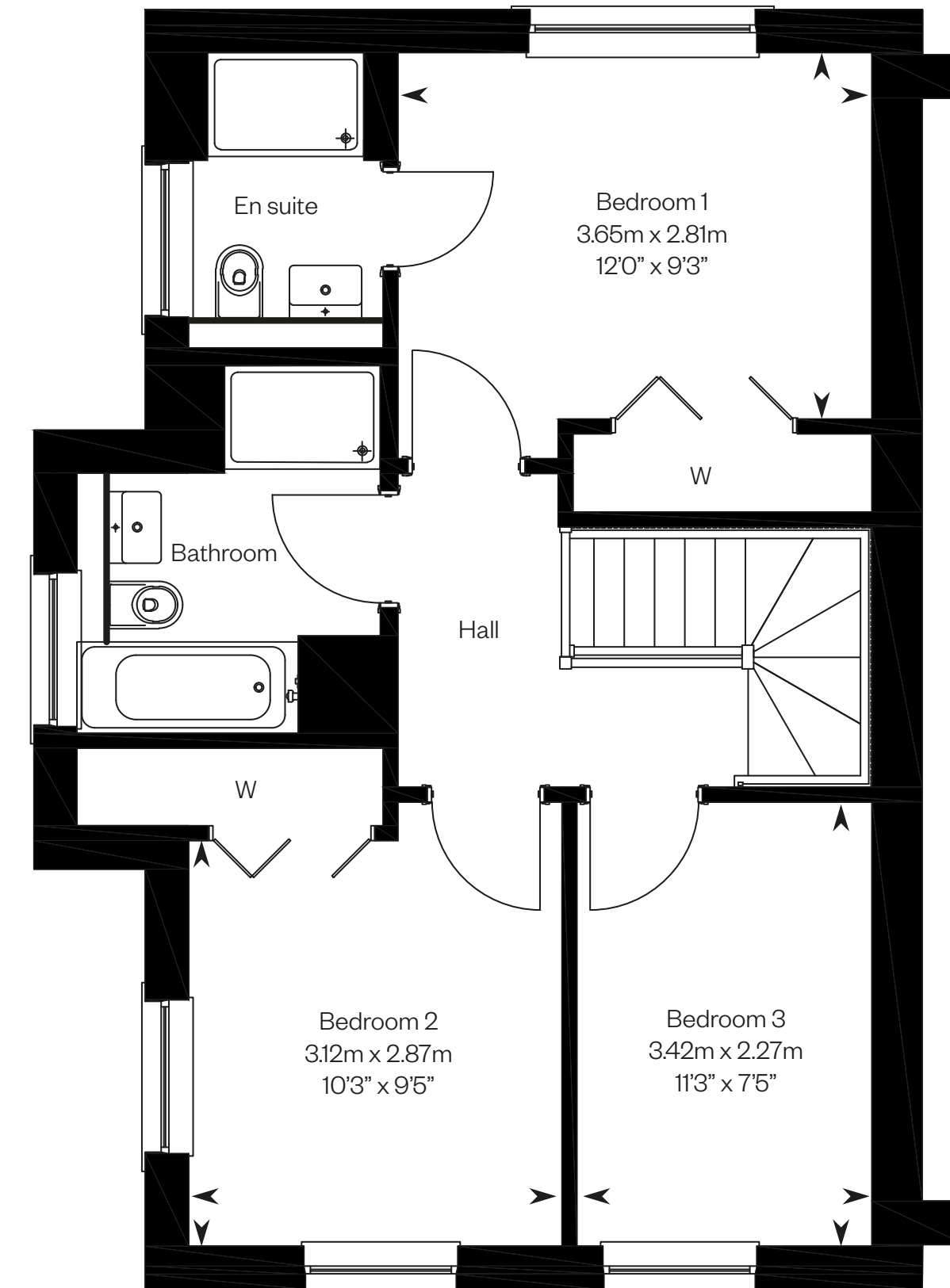
The Arran

First Phase

Plot 156 – as shown



Ground floor



First floor

Please ask your Sales Consultant for further details. ST: Store cupboard. W: Wardrobe.

IMPORTANT NOTICE TO CUSTOMERS: The Consumer Protection from Unfair Trading Regulations 2008. Cala Homes (East) Limited operates a policy of continual product development and the specifications outlined in this brochure are indicative only. The computer generated images and photographs do not necessarily represent the actual finishings/elevation or treatments, landscaping, furnishings and fittings at this development. Information contained is accurate at date of publication on 24.04.23. See the main brochure for the full Consumer Protection statement.

The Avon

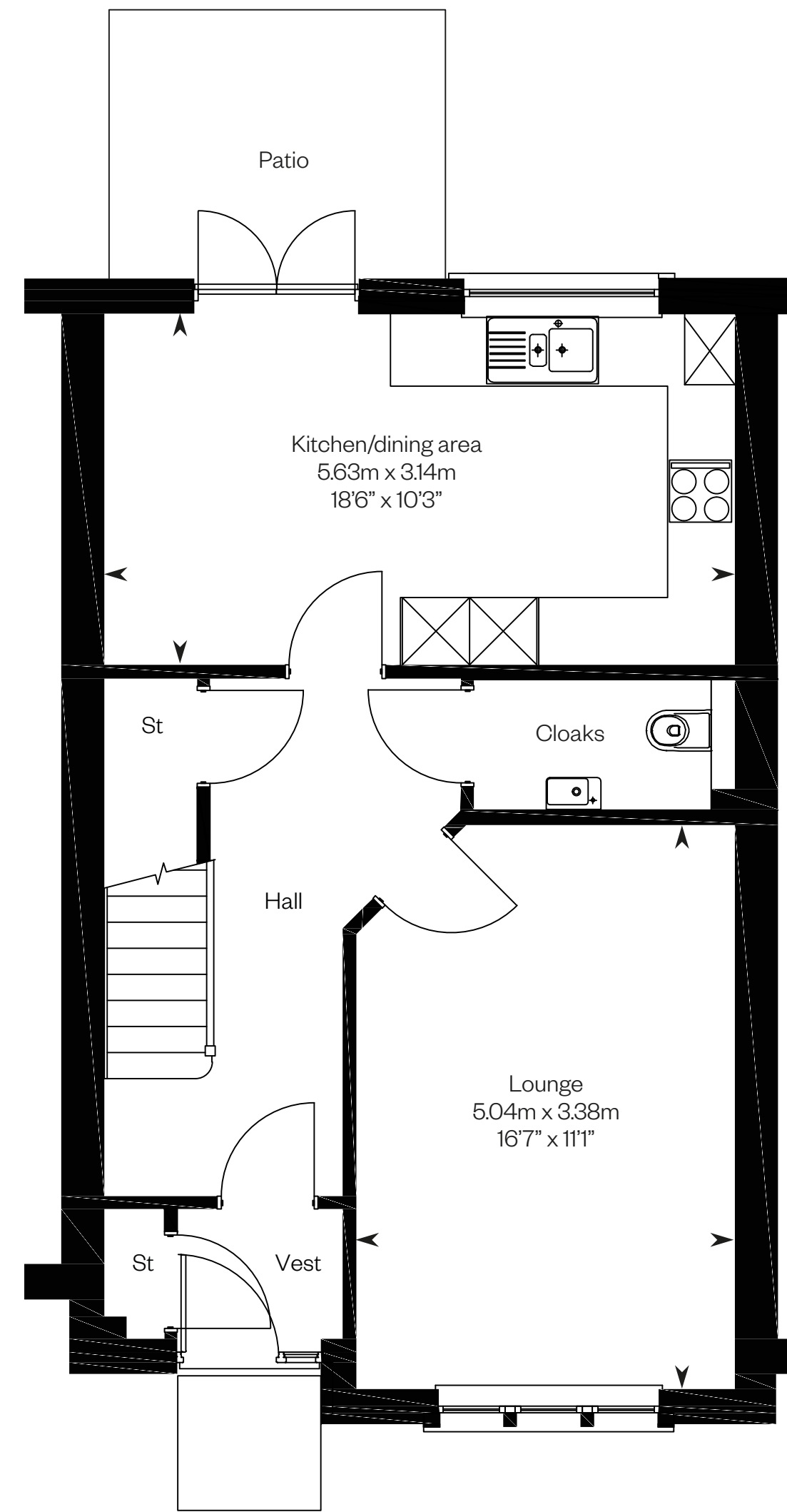
3 bedroom terraced home



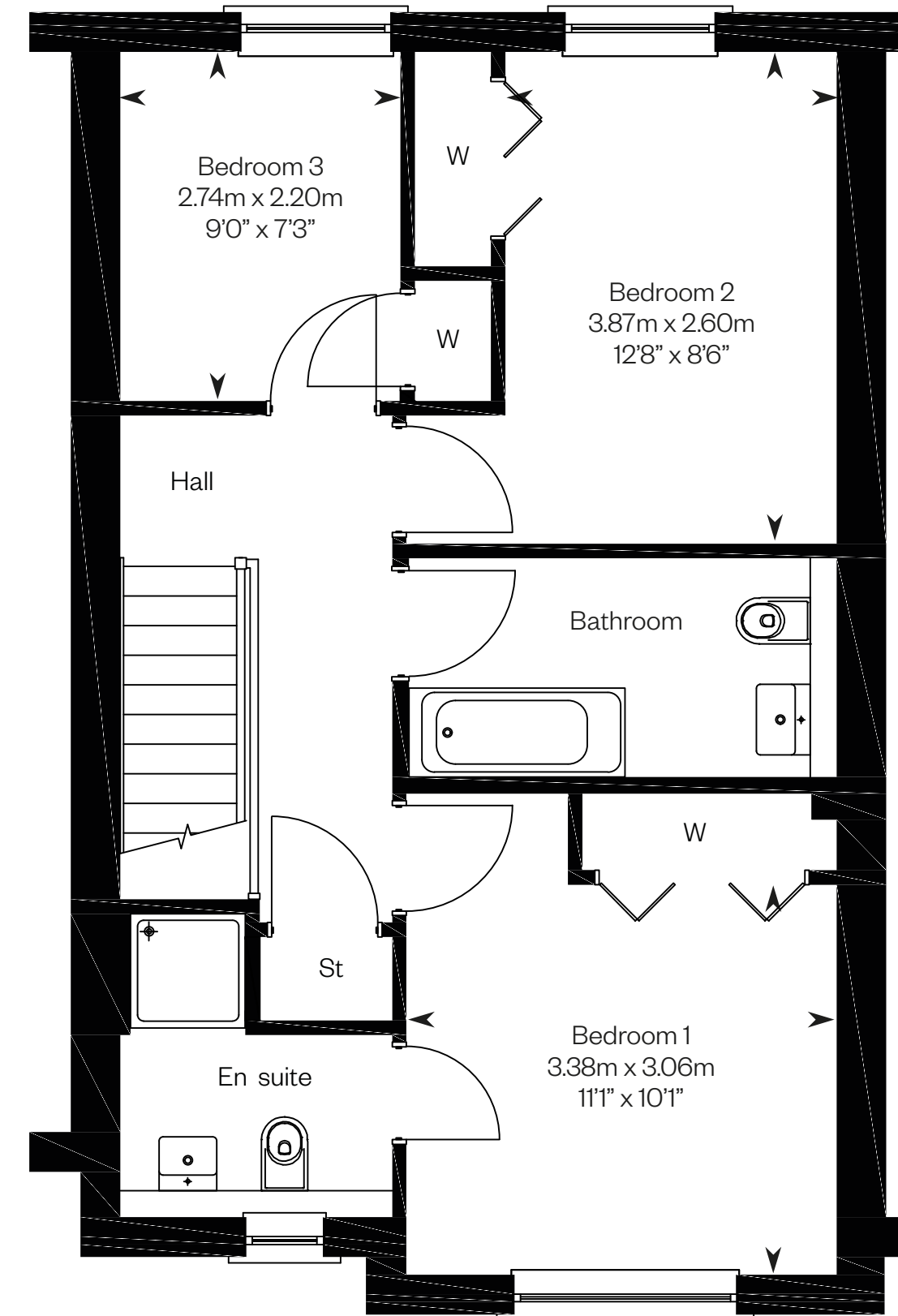
The Avon

First Phase

Plots 158, 159 – as shown



Ground floor



First floor

Please ask your Sales Consultant for further details. ST: Store cupboard. W: Wardrobe.

IMPORTANT NOTICE TO CUSTOMERS: The Consumer Protection from Unfair Trading Regulations 2008. Cala Homes (East) Limited operates a policy of continual product development and the specifications outlined in this brochure are indicative only. The computer generated images and photographs do not necessarily represent the actual finishings/elevation or treatments, landscaping, furnishings and fittings at this development. Information contained is accurate at date of publication on 24.04.23. See the main brochure for the full Consumer Protection statement.

The Bargower

4 bedroom detached home

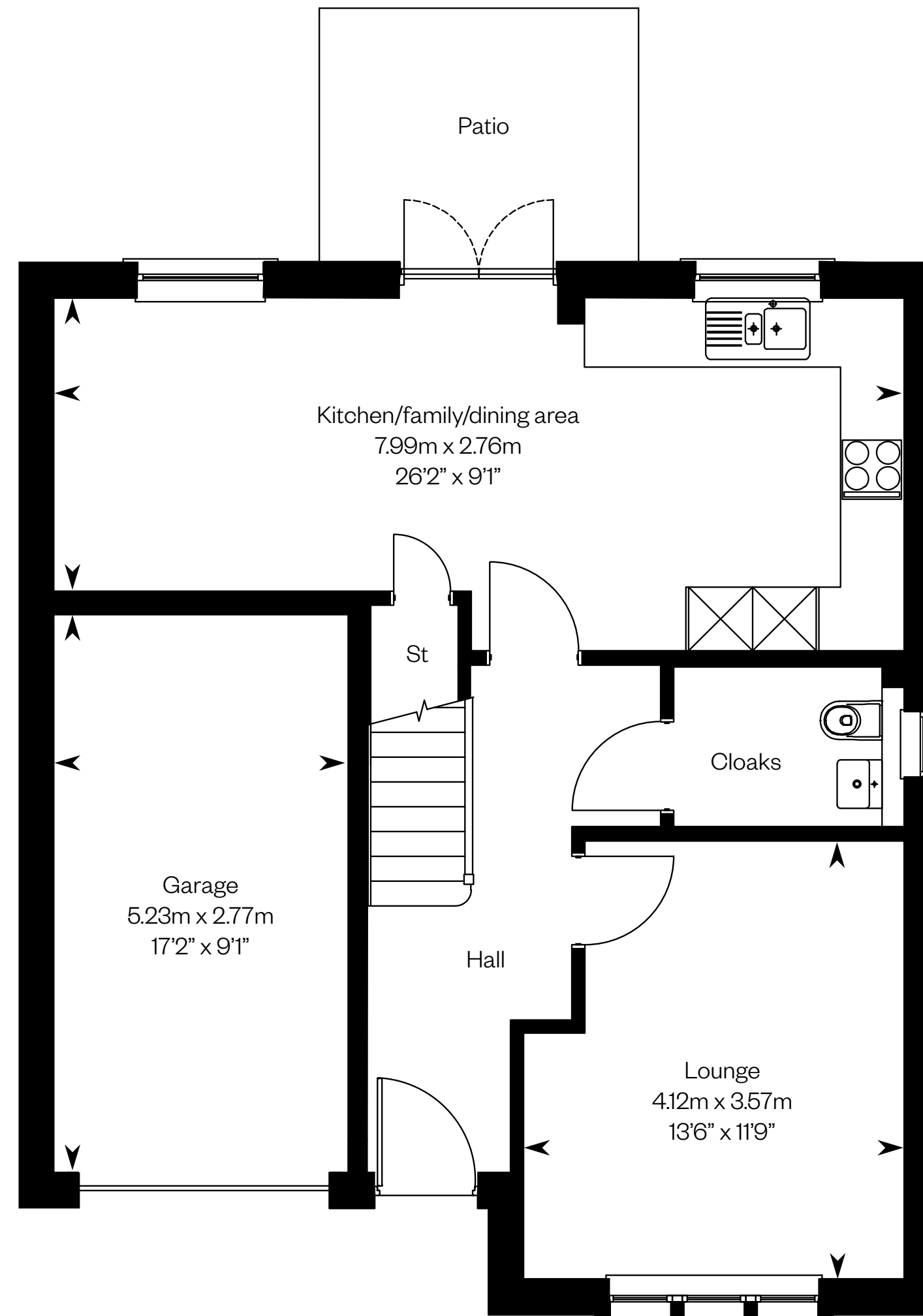


Computer generated image - The Bargower

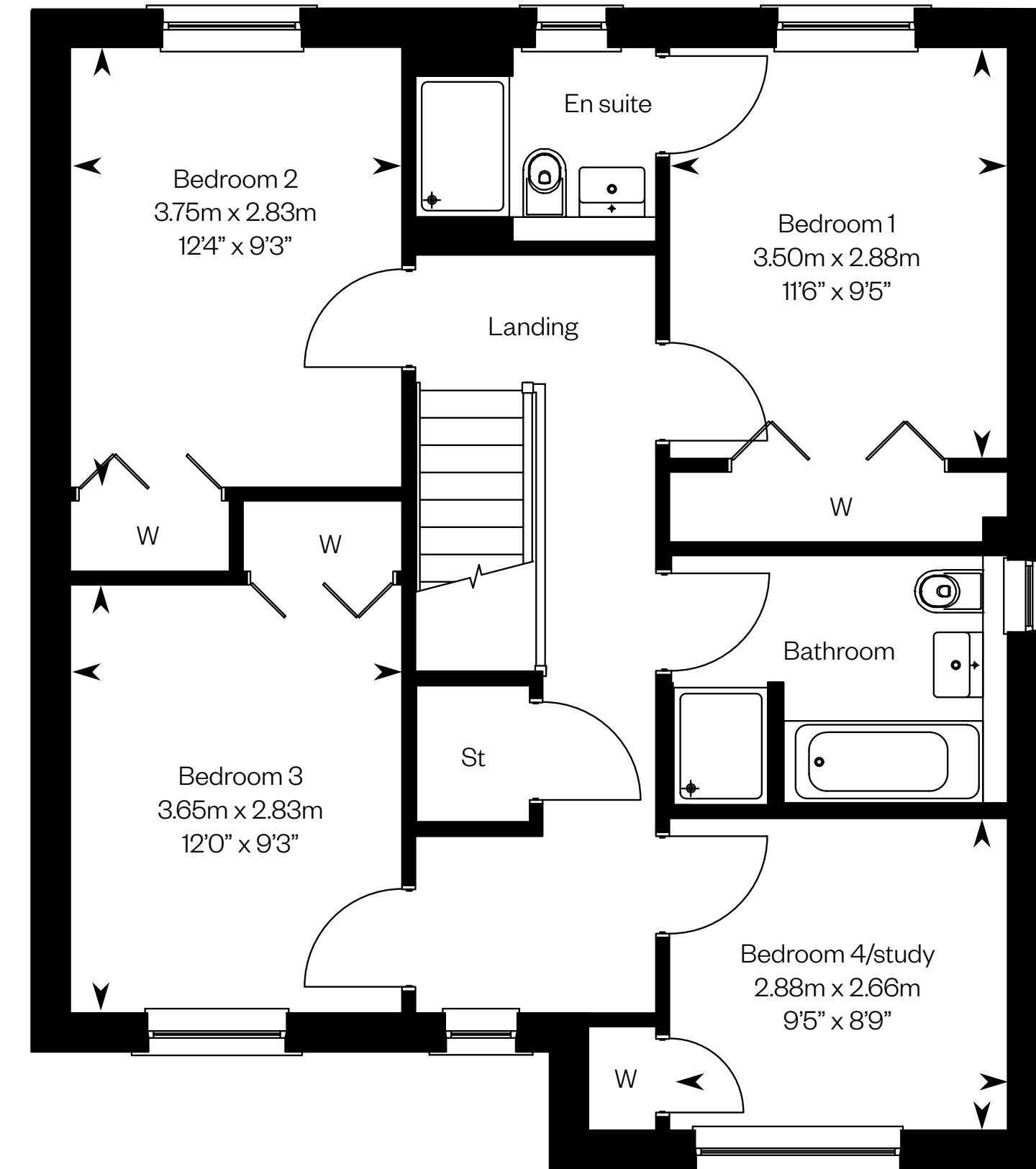
The Bargower

First Phase

Plot 141 – as shown



Ground floor



First floor

Please ask your Sales Consultant for further details. ST: Store cupboard. W: Wardrobe.

IMPORTANT NOTICE TO CUSTOMERS: The Consumer Protection from Unfair Trading Regulations 2008. Cala Homes (East) Limited operates a policy of continual product development and the specifications outlined in this brochure are indicative only. The computer generated images and photographs do not necessarily represent the actual finishings/elevation or treatments, landscaping, furnishings and fittings at this development. Information contained is accurate at date of publication on 24.04.23. See the main brochure for the full Consumer Protection statement.

The Barrie

4 bedroom detached home

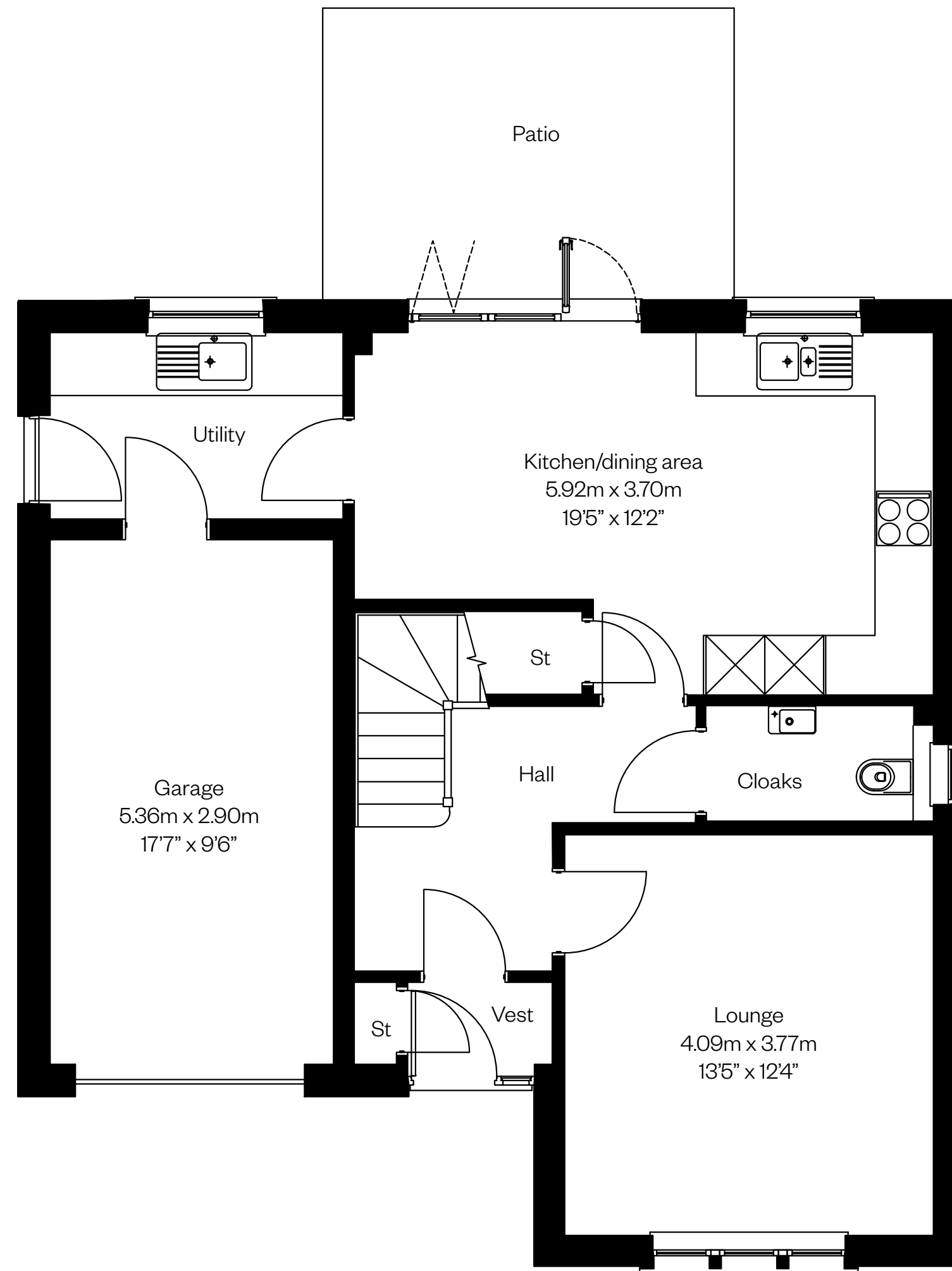


Computer generated image - The Barrie

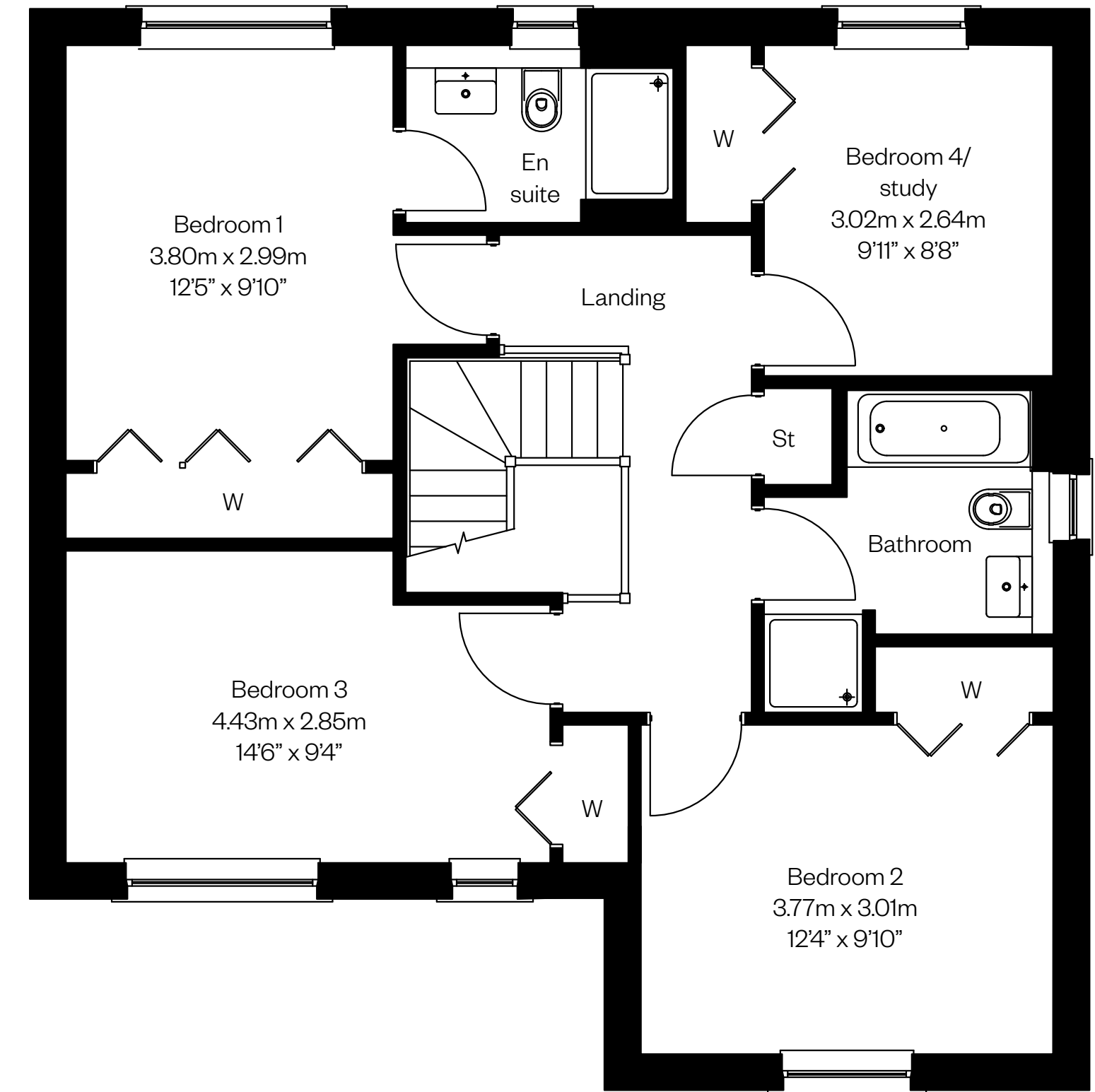
The Barrie

First Phase

Plots 140, 167 – handed



Ground floor



First floor

Plot 167 will have a different elevational treatment to the one shown in the CGI. Please speak to a Sales Advisor for more details.

Please ask your Sales Consultant for further details. ST: Store cupboard. W: Wardrobe.

IMPORTANT NOTICE TO CUSTOMERS: The Consumer Protection from Unfair Trading Regulations 2008. Cala Homes (East) Limited operates a policy of continual product development and the specifications outlined in this brochure are indicative only. The computer generated images and photographs do not necessarily represent the actual finishings/elevation or treatments, landscaping, furnishings and fittings at this development. Information contained is accurate at date of publication on 24.04.23. See the main brochure for the full Consumer Protection statement.

The Cairn

4 bedroom detached home

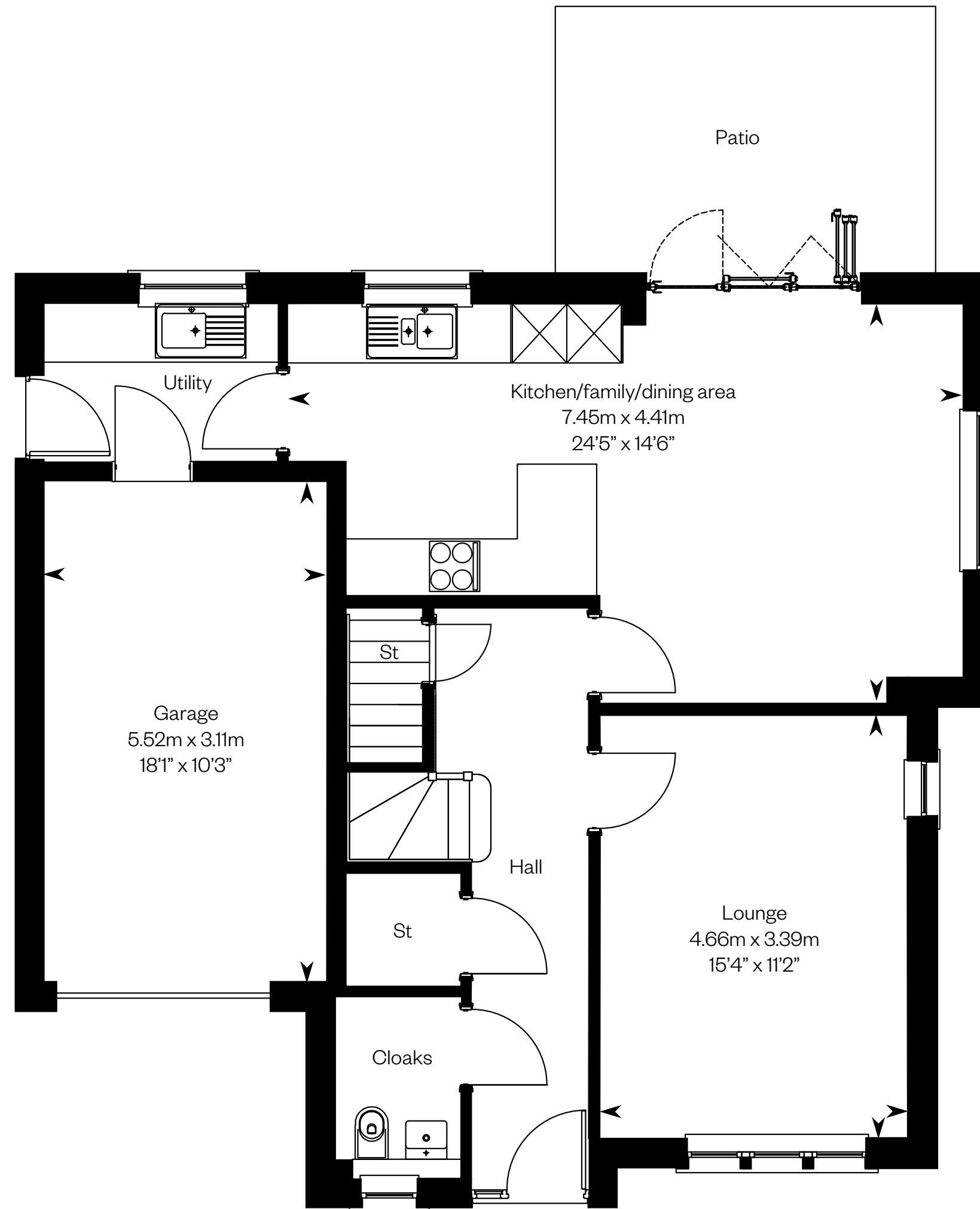


Computer generated image - The Cairn

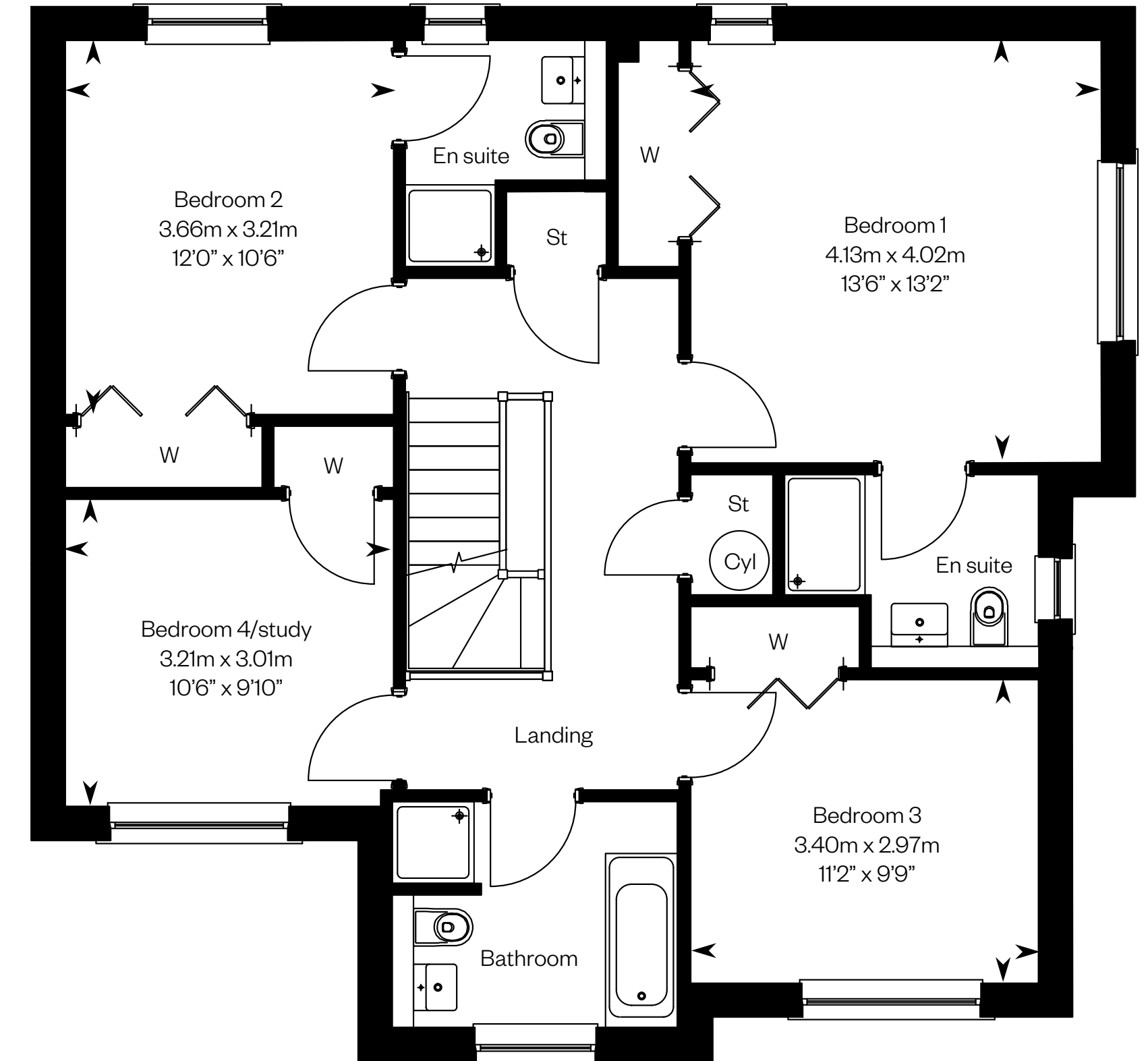
The Cairn

First Phase

Plots 142 – handed



Ground floor



First floor

Please ask your Sales Consultant for further details. ST: Store cupboard. W: Wardrobe.

IMPORTANT NOTICE TO CUSTOMERS: The Consumer Protection from Unfair Trading Regulations 2008. Cala Homes (East) Limited operates a policy of continual product development and the specifications outlined in this brochure are indicative only. The computer generated images and photographs do not necessarily represent the actual finishings/elevation or treatments, landscaping, furnishings and fittings at this development. Information contained is accurate at date of publication on 24.04.23. See the main brochure for the full Consumer Protection statement.

The Cairn

4 bedroom detached home



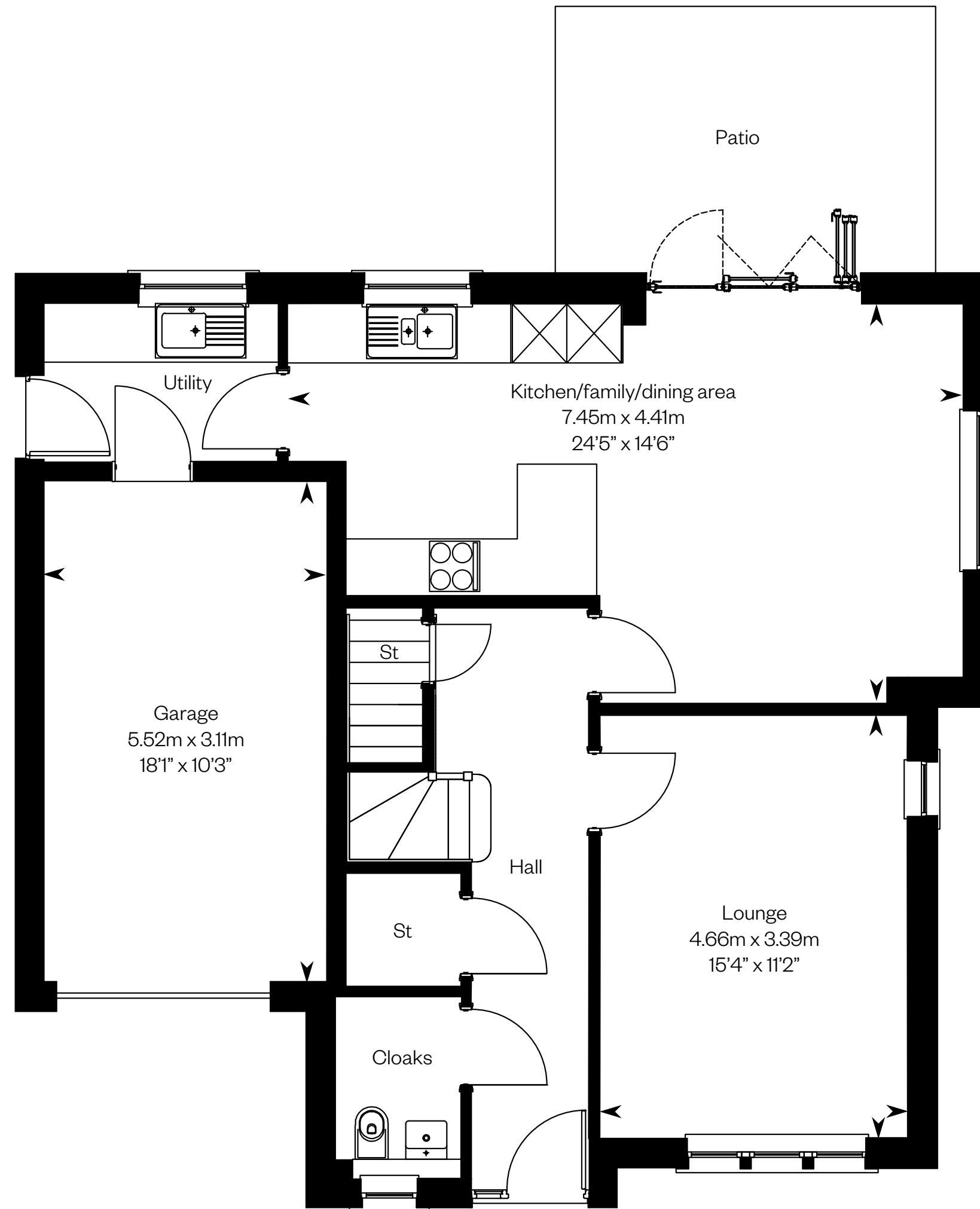
Computer generated image - The Cairn

The Cairn

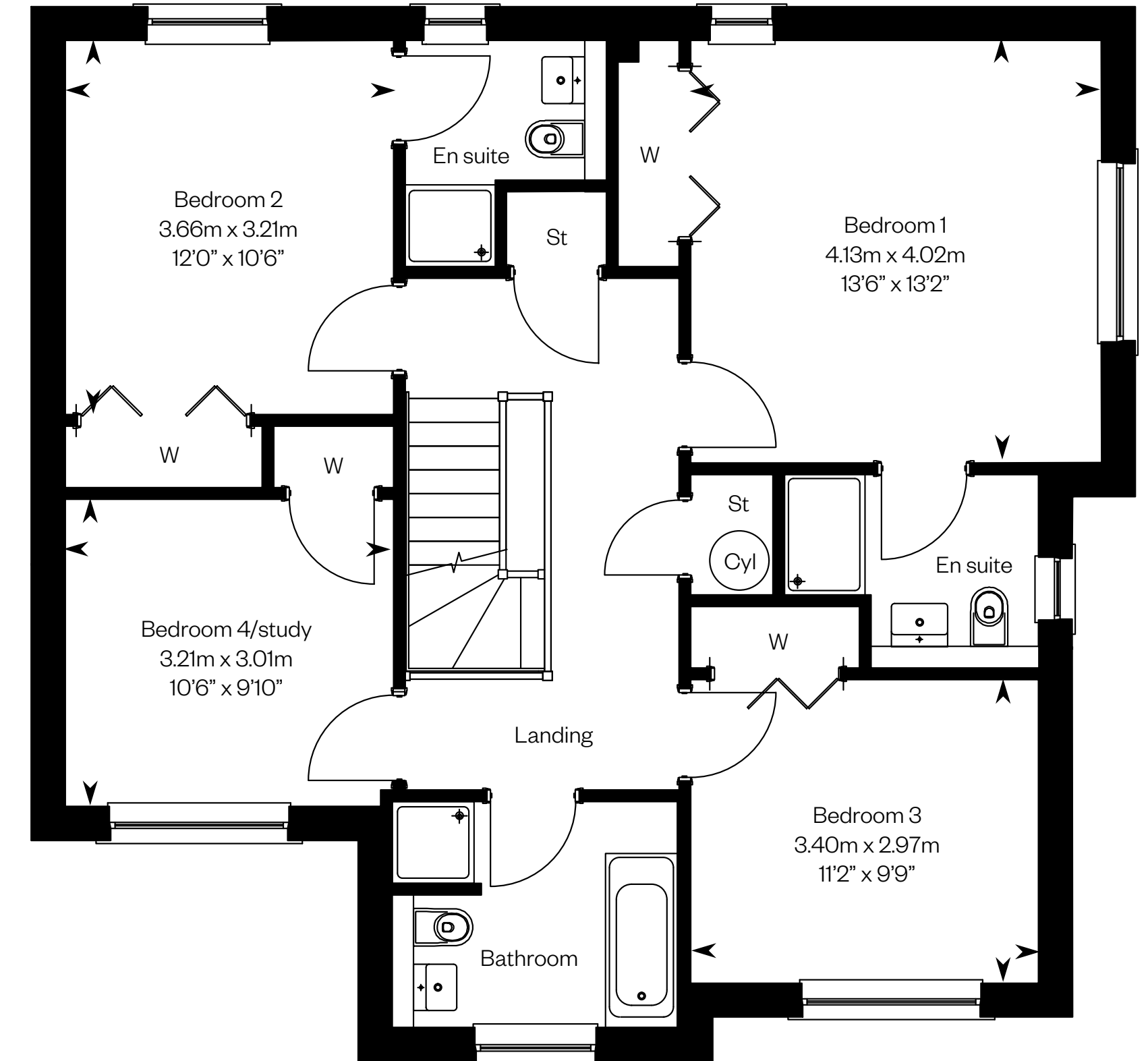
First Phase

Plot 131 – handed

Plots 130, 139, 166 – as shown



Ground floor



First floor

Please ask your Sales Consultant for further details. ST: Store cupboard. W: Wardrobe.

IMPORTANT NOTICE TO CUSTOMERS: The Consumer Protection from Unfair Trading Regulations 2008. Cala Homes (East) Limited operates a policy of continual product development and the specifications outlined in this brochure are indicative only. The computer generated images and photographs do not necessarily represent the actual finishings/elevation or treatments, landscaping, furnishings and fittings at this development. Information contained is accurate at date of publication on 24.04.23. See the main brochure for the full Consumer Protection statement.

The Colville

4 bedroom detached home with study

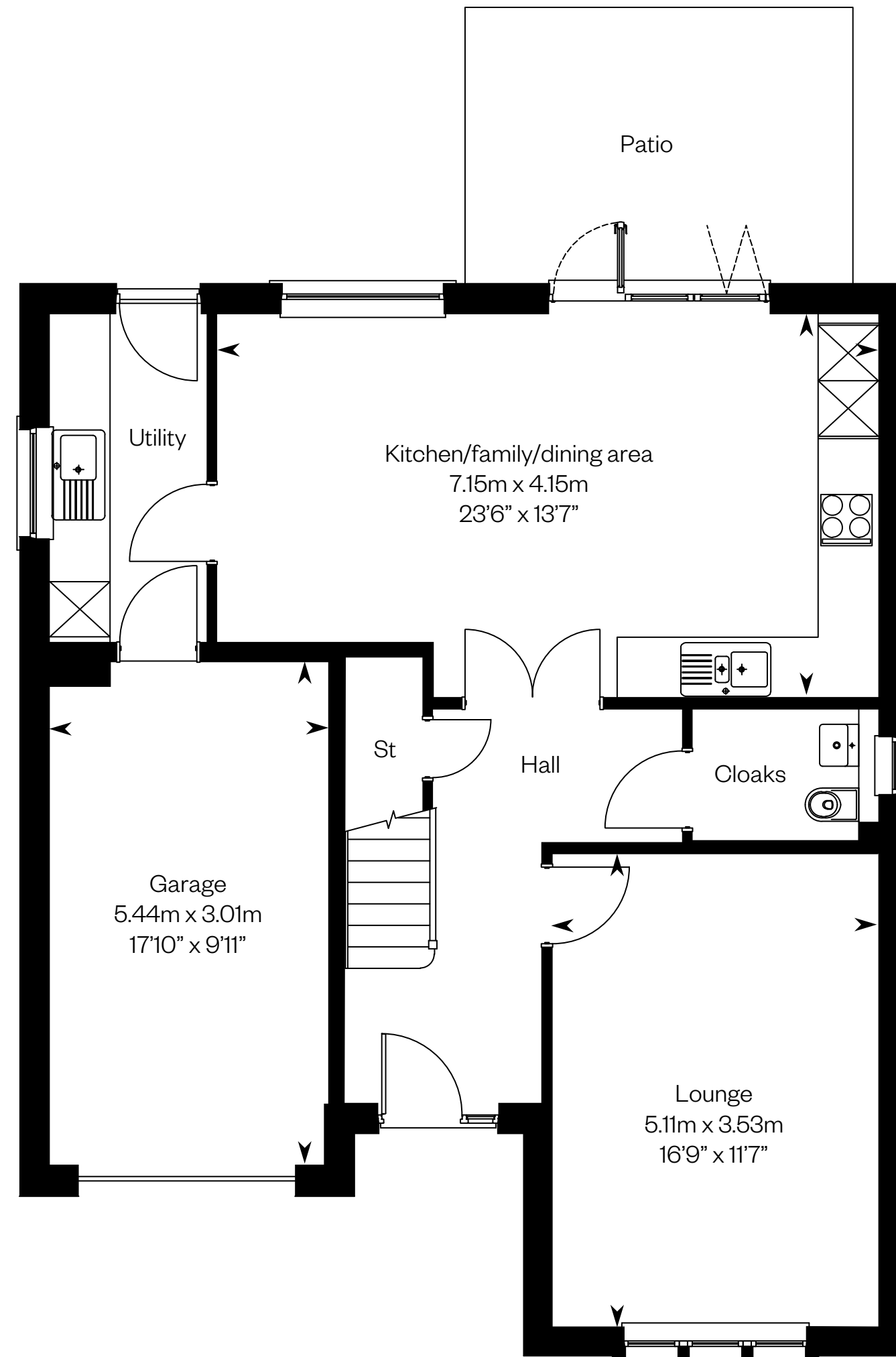


The Colville

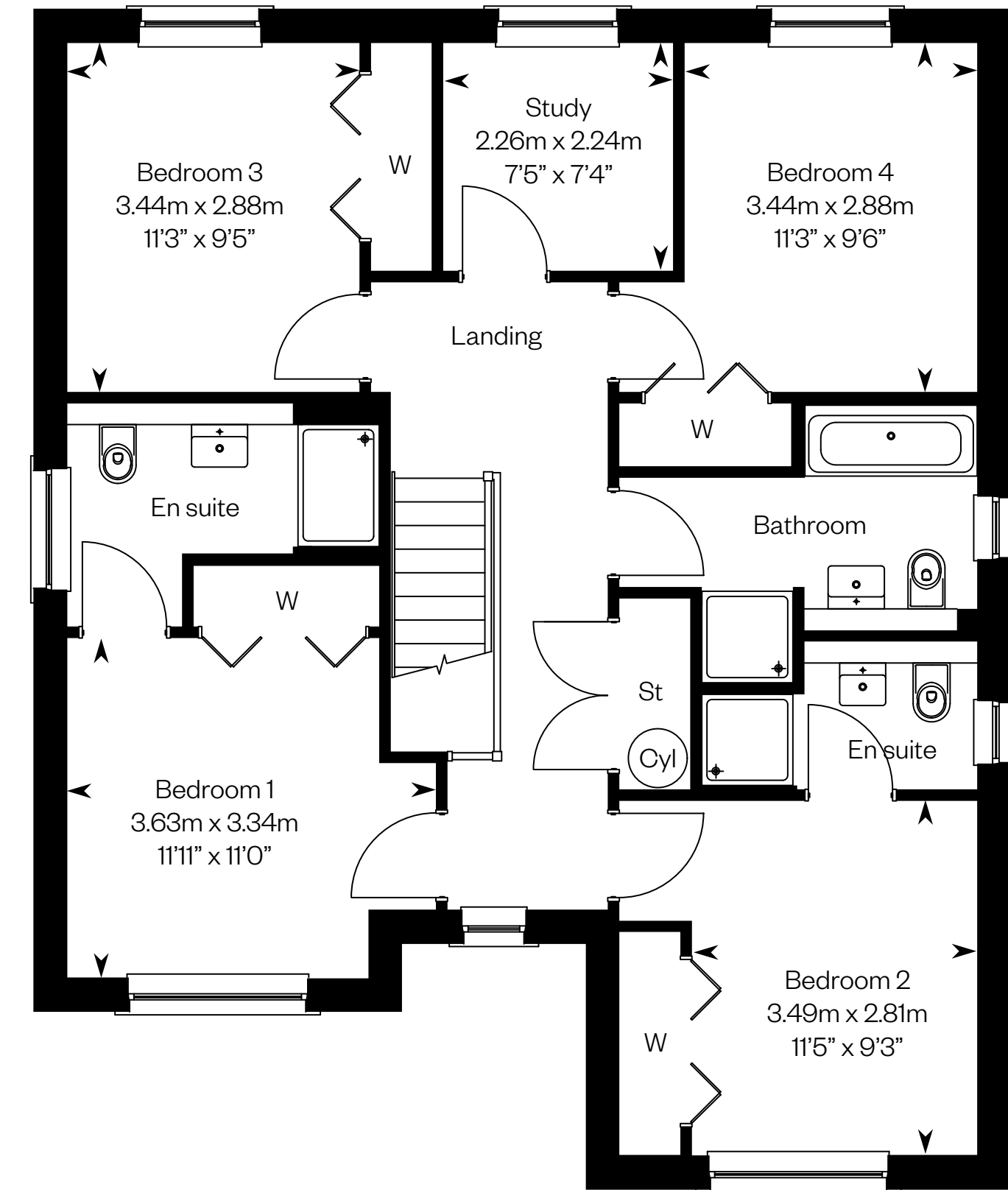
First Phase

Plot 137 – as shown

Plot 138 – handed



Ground floor



First floor

Plots 137 & 138 will have a different elevational treatment to the one shown in the CGI. Please speak to a Sales Advisor for more details.

Please ask your Sales Consultant for further details. ST: Store cupboard. W: Wardrobe.

IMPORTANT NOTICE TO CUSTOMERS: The Consumer Protection from Unfair Trading Regulations 2008. Cala Homes (East) Limited operates a policy of continual product development and the specifications outlined in this brochure are indicative only. The computer generated images and photographs do not necessarily represent the actual finishings/elevation or treatments, landscaping, furnishings and fittings at this development. Information contained is accurate at date of publication on 24.04.23. See the main brochure for the full Consumer Protection statement.

The Crichton

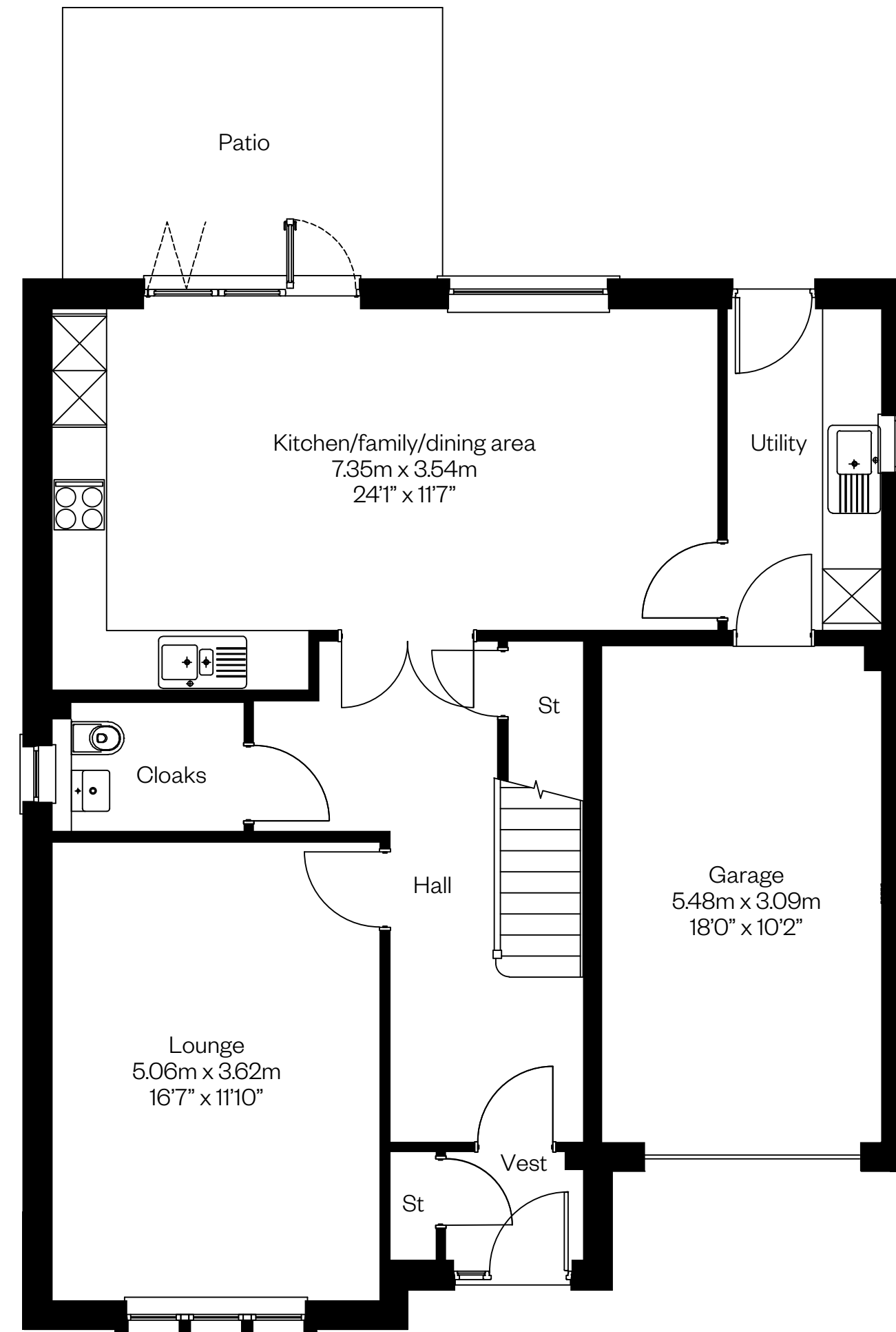
5 bedroom detached home



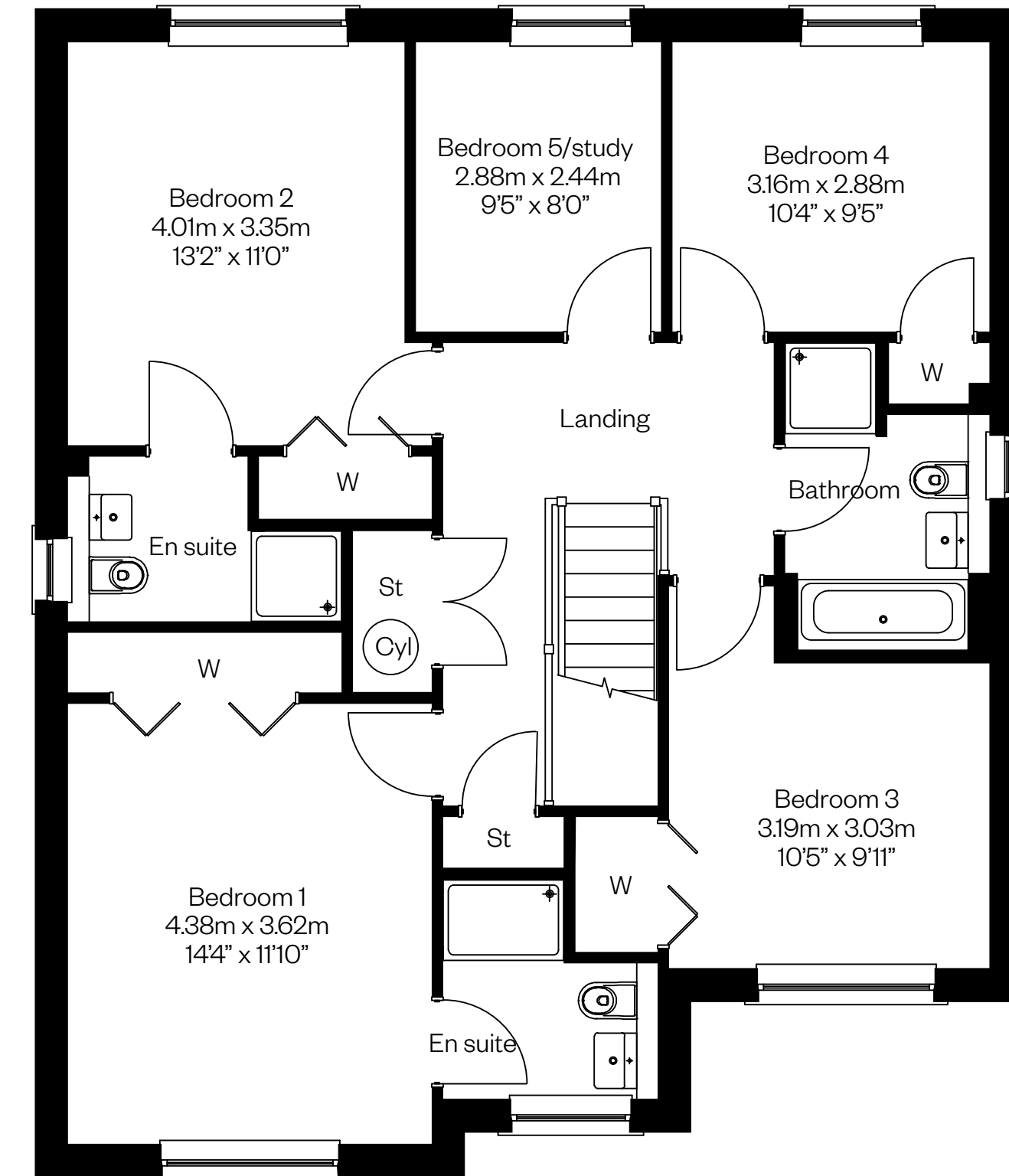
The Crichton

First Phase

Plots 132, 136 – handed



Ground floor



First floor

Plots 132 & 136 will have a different elevational treatment to the one shown in the CGI. Please speak to a Sales Advisor for more details.

Please ask your Sales Consultant for further details. ST: Store cupboard. W: Wardrobe.

IMPORTANT NOTICE TO CUSTOMERS: The Consumer Protection from Unfair Trading Regulations 2008. Cala Homes (East) Limited operates a policy of continual product development and the specifications outlined in this brochure are indicative only. The computer generated images and photographs do not necessarily represent the actual finishings/elevation or treatments, landscaping, furnishings and fittings at this development. Information contained is accurate at date of publication on 24.04.23. See the main brochure for the full Consumer Protection statement.

The Darroch

5 bedroom detached home



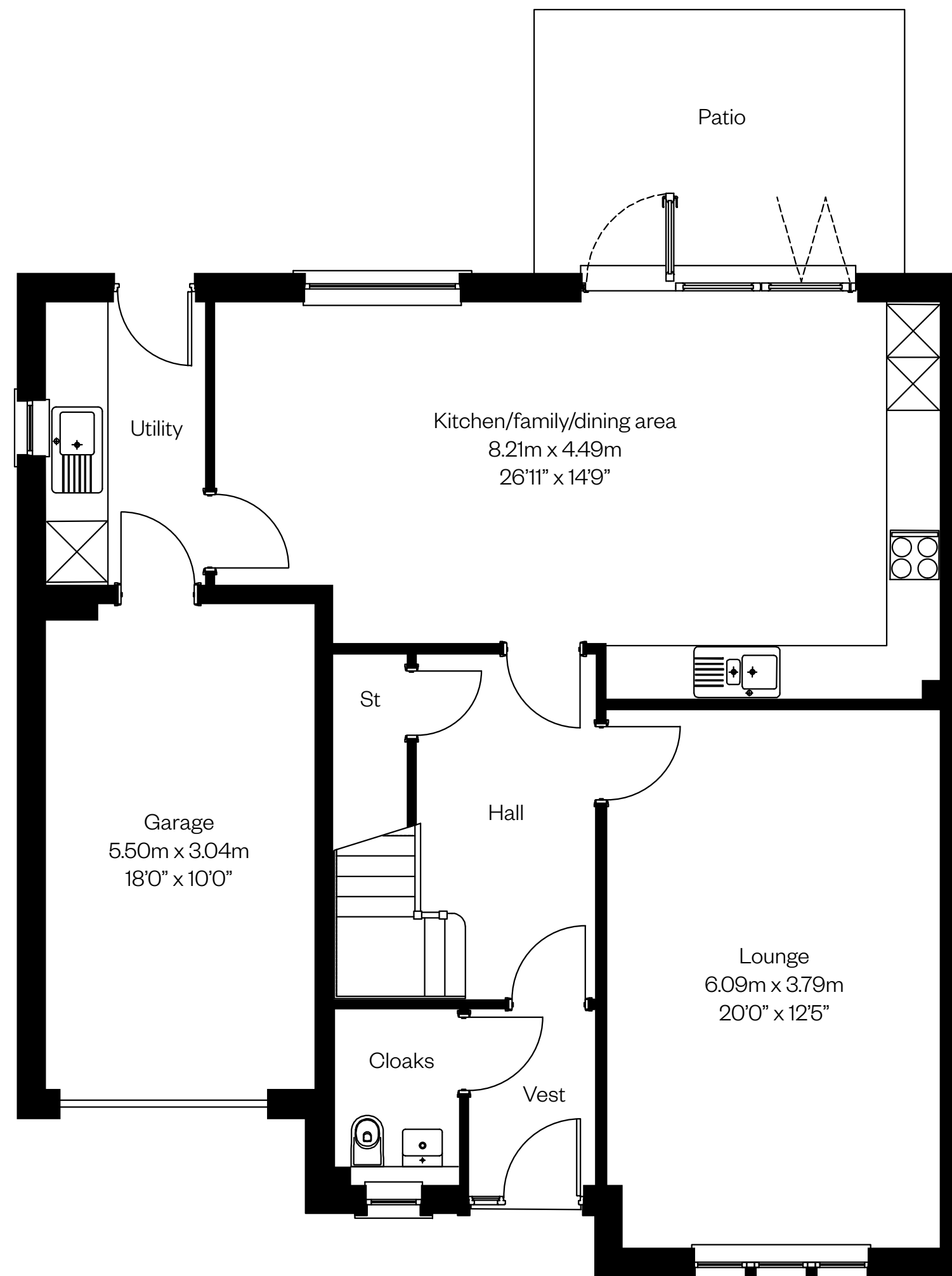
Computer generated image - The Darroch

The Darroch

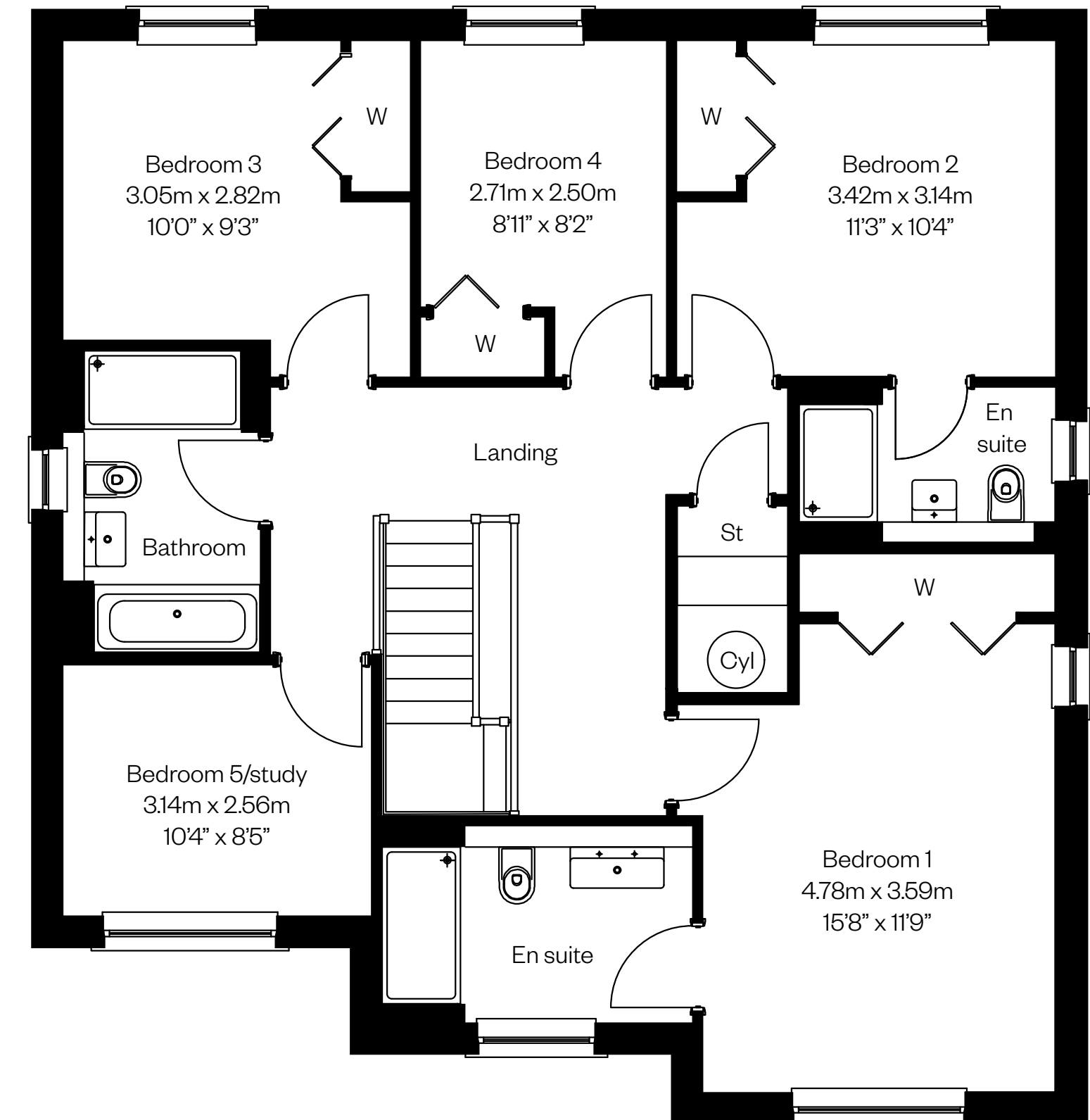
First Phase

Plot 134 – as shown

Plot 133 – handed



Ground floor



First floor

Please ask your Sales Consultant for further details. ST: Store cupboard. W: Wardrobe.

IMPORTANT NOTICE TO CUSTOMERS: The Consumer Protection from Unfair Trading Regulations 2008. Cala Homes (East) Limited operates a policy of continual product development and the specifications outlined in this brochure are indicative only. The computer generated images and photographs do not necessarily represent the actual finishings/elevation or treatments, landscaping, furnishings and fittings at this development. Information contained is accurate at date of publication on 24.04.23. See the main brochure for the full Consumer Protection statement.

The Elliot

4 bedroom detached home with study and single garage

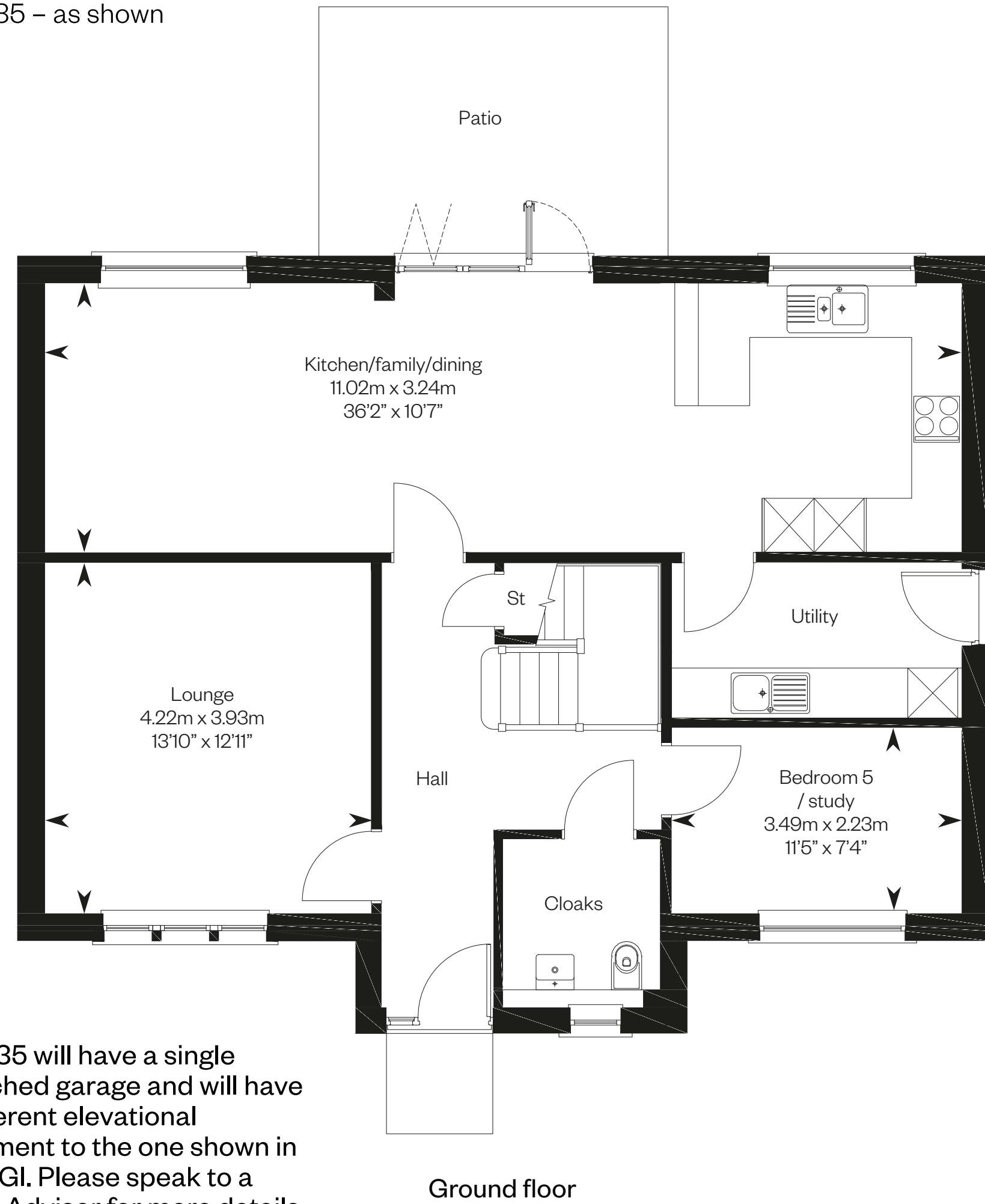


Computer generated image - The Elliot

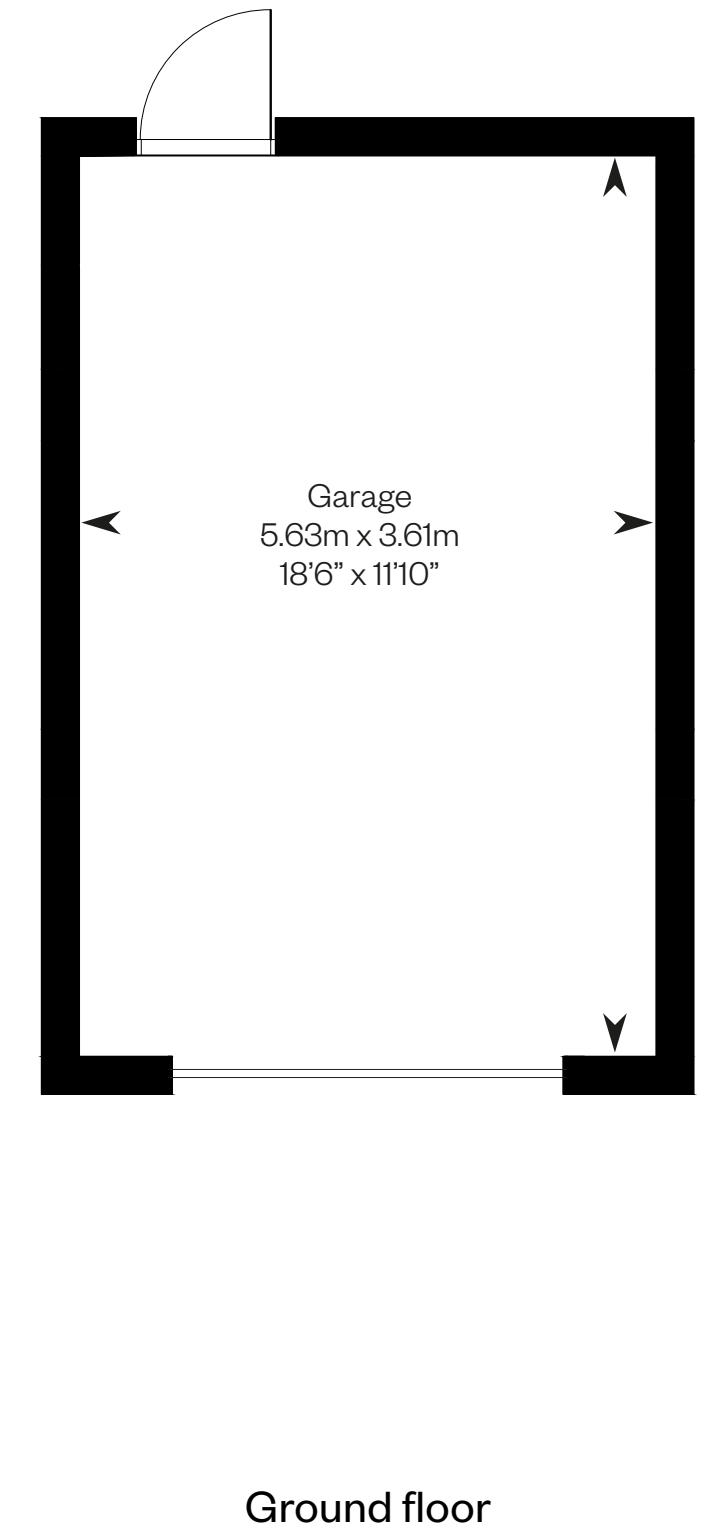
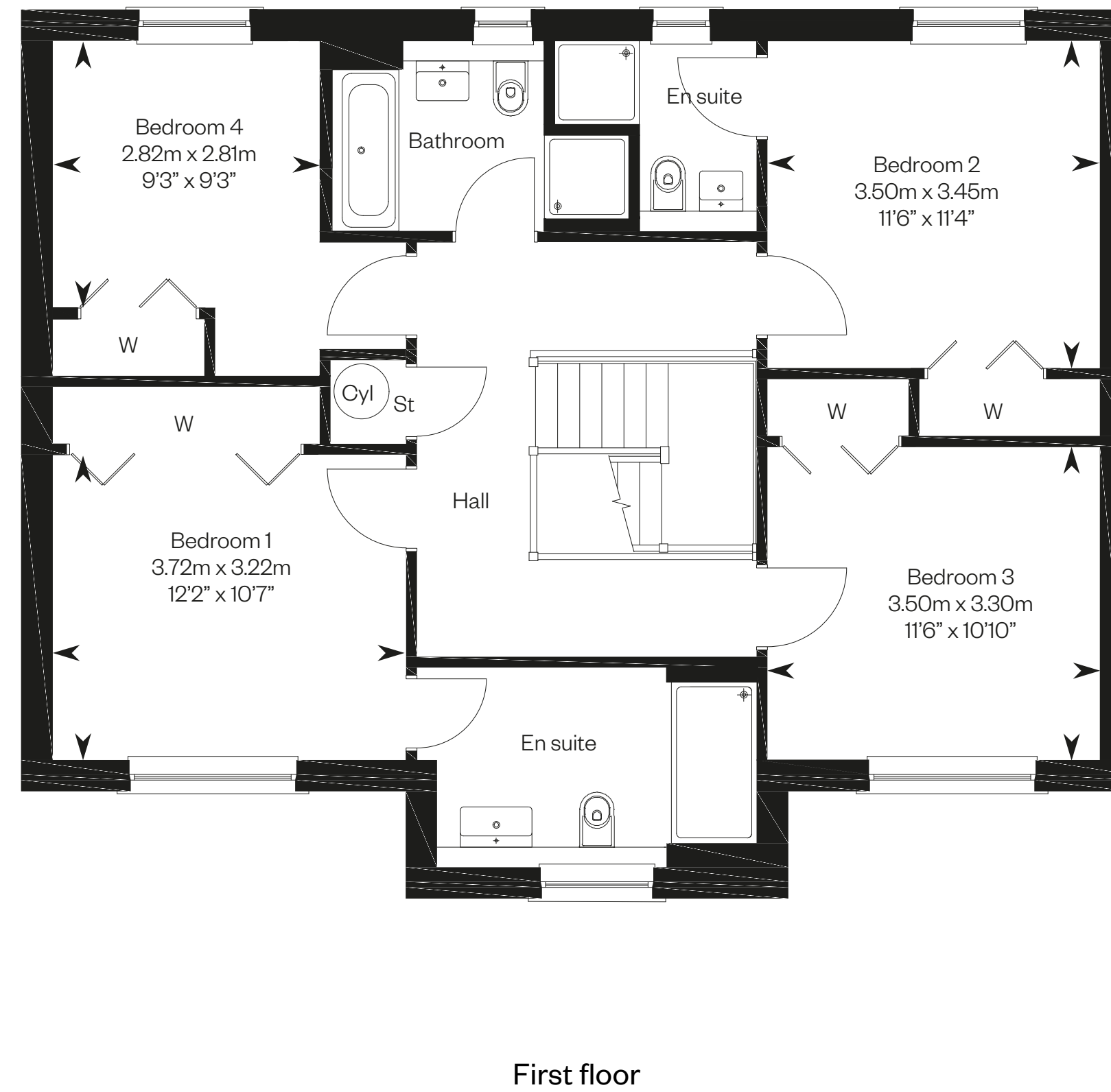
The Elliot

First Phase

Plot 135 – as shown



Plot 135 will have a single detached garage and will have a different elevational treatment to the one shown in the CGI. Please speak to a Sales Advisor for more details.



Please ask your Sales Consultant for further details. ST: Store cupboard. W: Wardrobe.

IMPORTANT NOTICE TO CUSTOMERS: The Consumer Protection from Unfair Trading Regulations 2008. Cala Homes (East) Limited operates a policy of continual product development and the specifications outlined in this brochure are indicative only. The computer generated images and photographs do not necessarily represent the actual finishings/elevation or treatments, landscaping, furnishings and fittings at this development. Information contained is accurate at date of publication on 24.04.23. See the main brochure for the full Consumer Protection statement.