



Hale Apartments

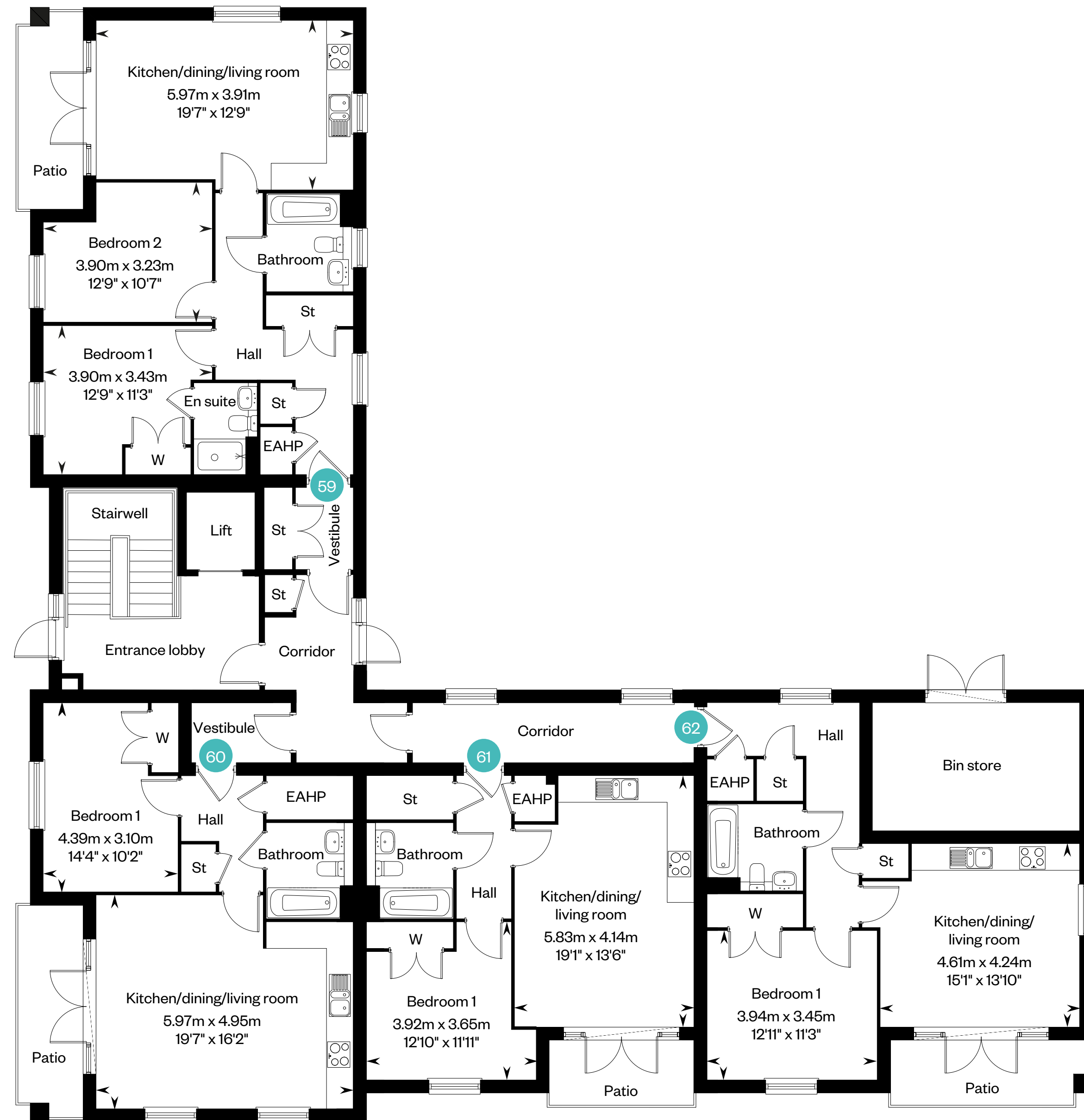
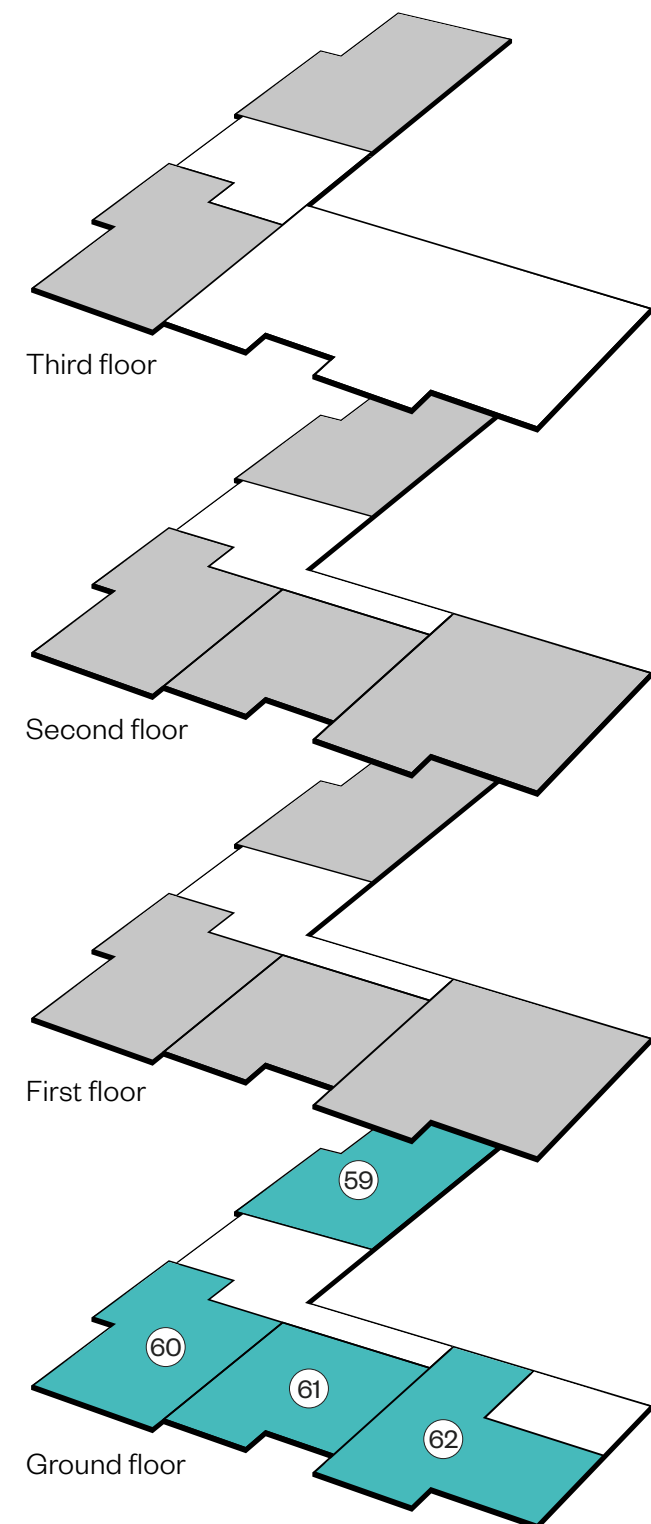
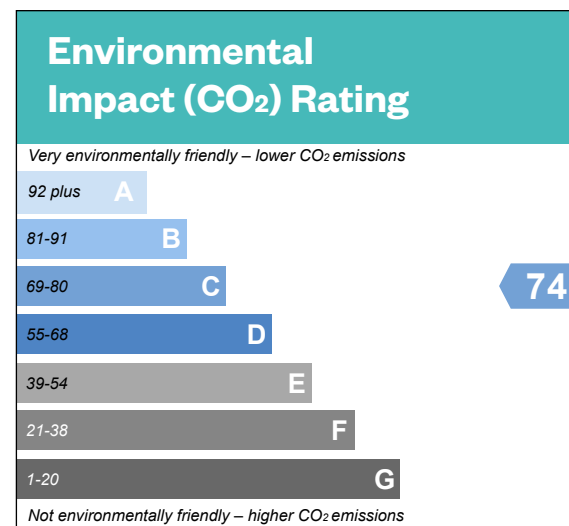
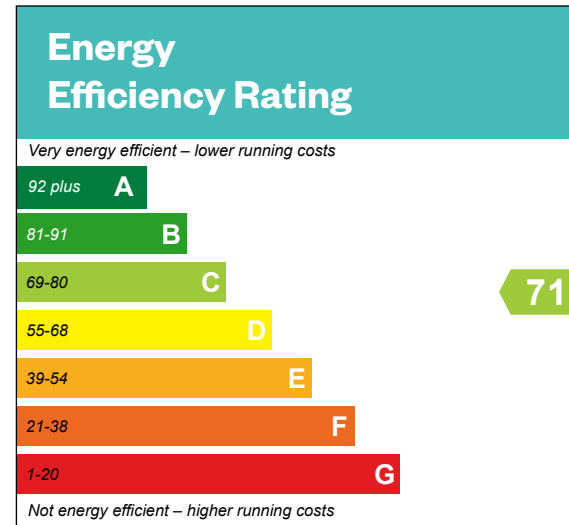
1 & 2 bedroom apartments



Hale Apartments

Ground floor

Plots 59, 60, 61 & 62 – as shown

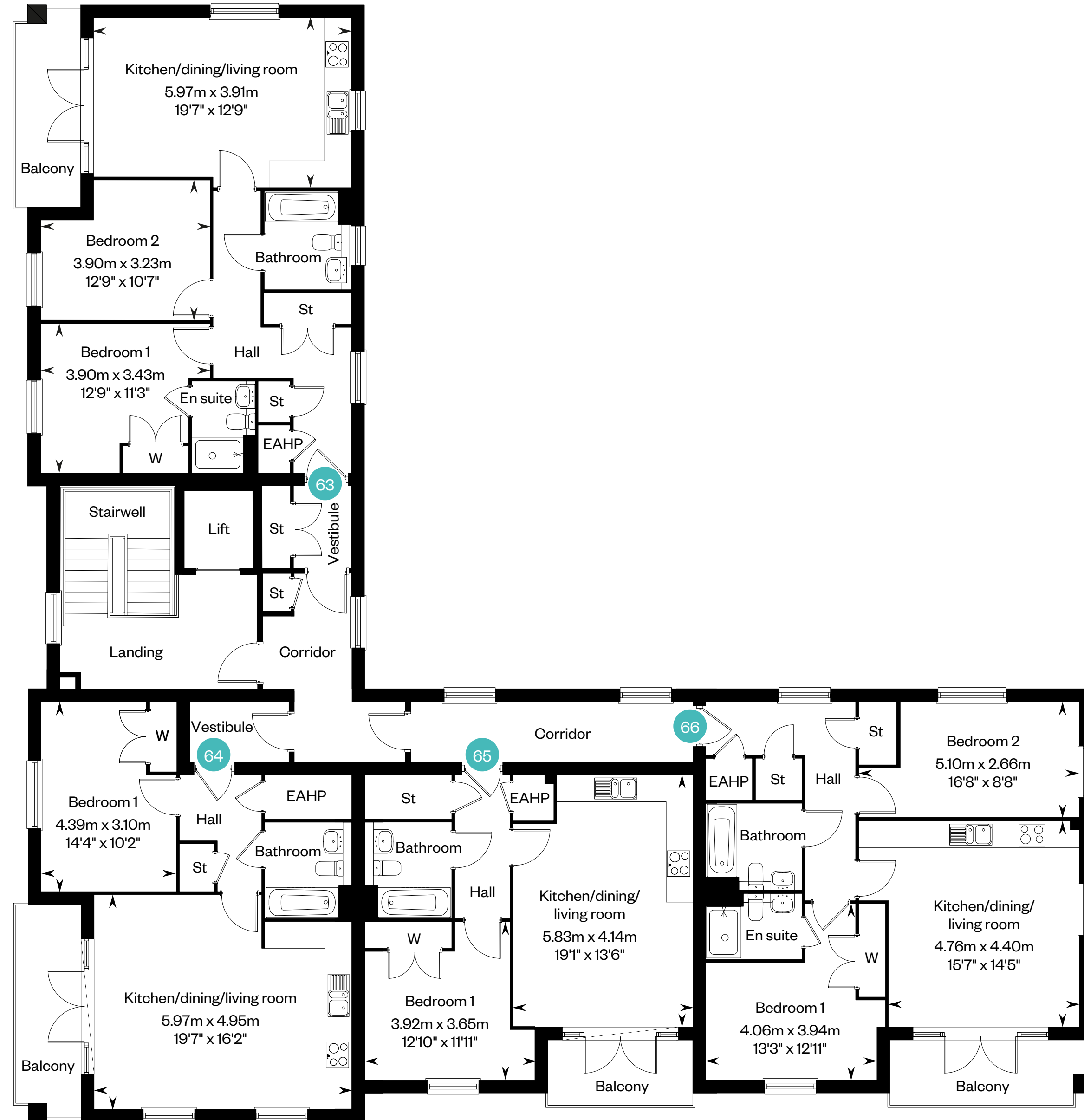
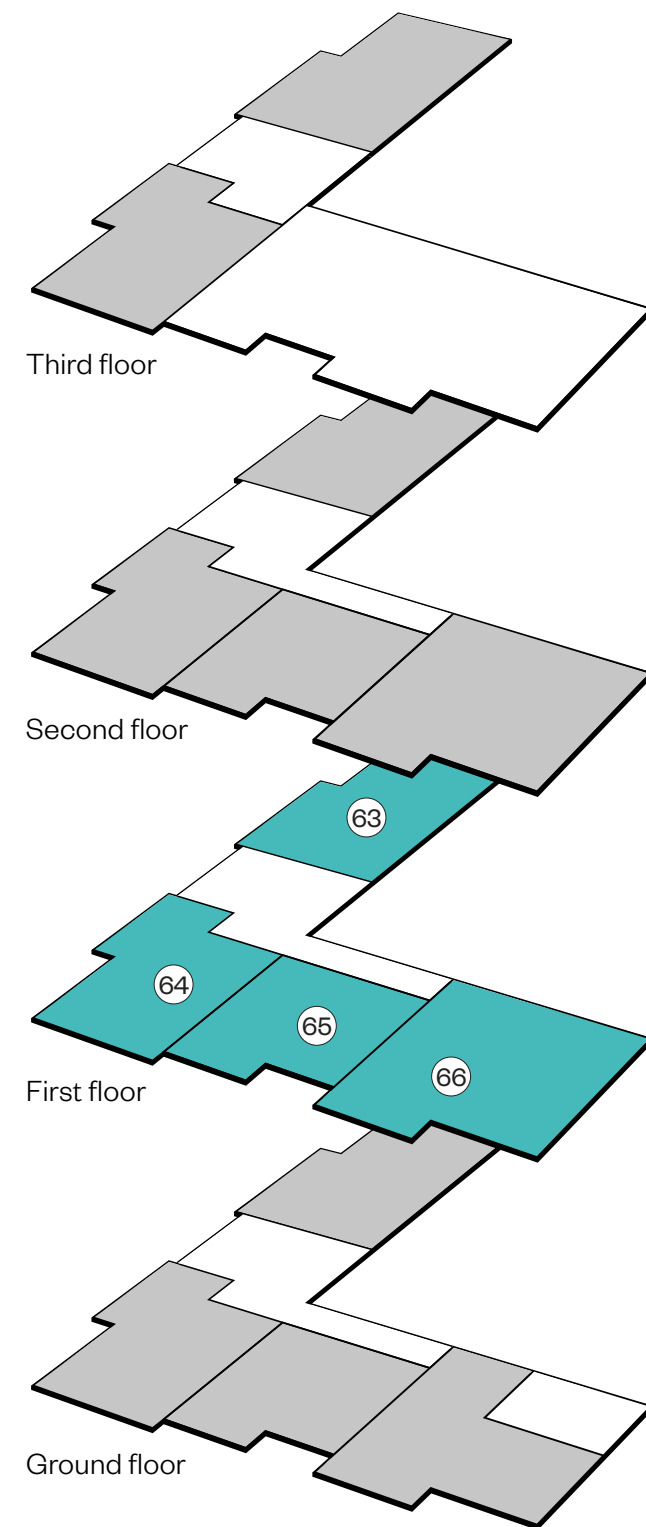
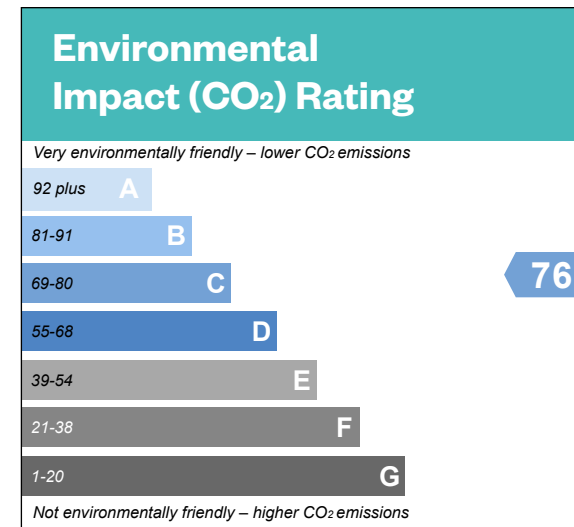
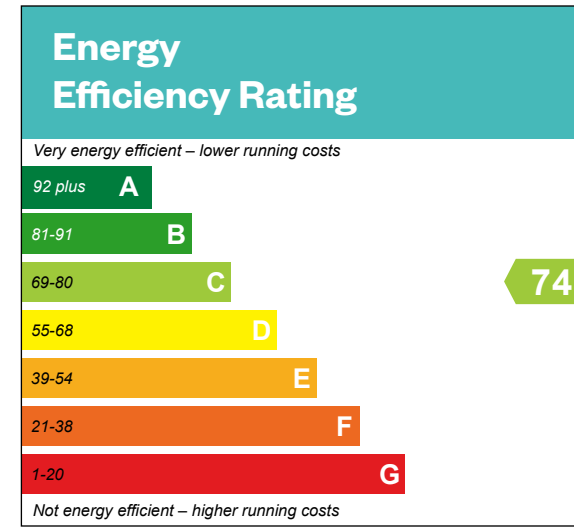


Please ask your Sales Consultant for further details. A/C: Airing cupboard. St: Storage cupboard. W: Wardrobe. EAHP: Exhaust Air Heat Pump. Please speak to Sales Consultant for plot specific Energy Efficiency and Environmental Impact rating.

Hale Apartments

First floor

Plots 63, 64, 65 & 66 – as shown

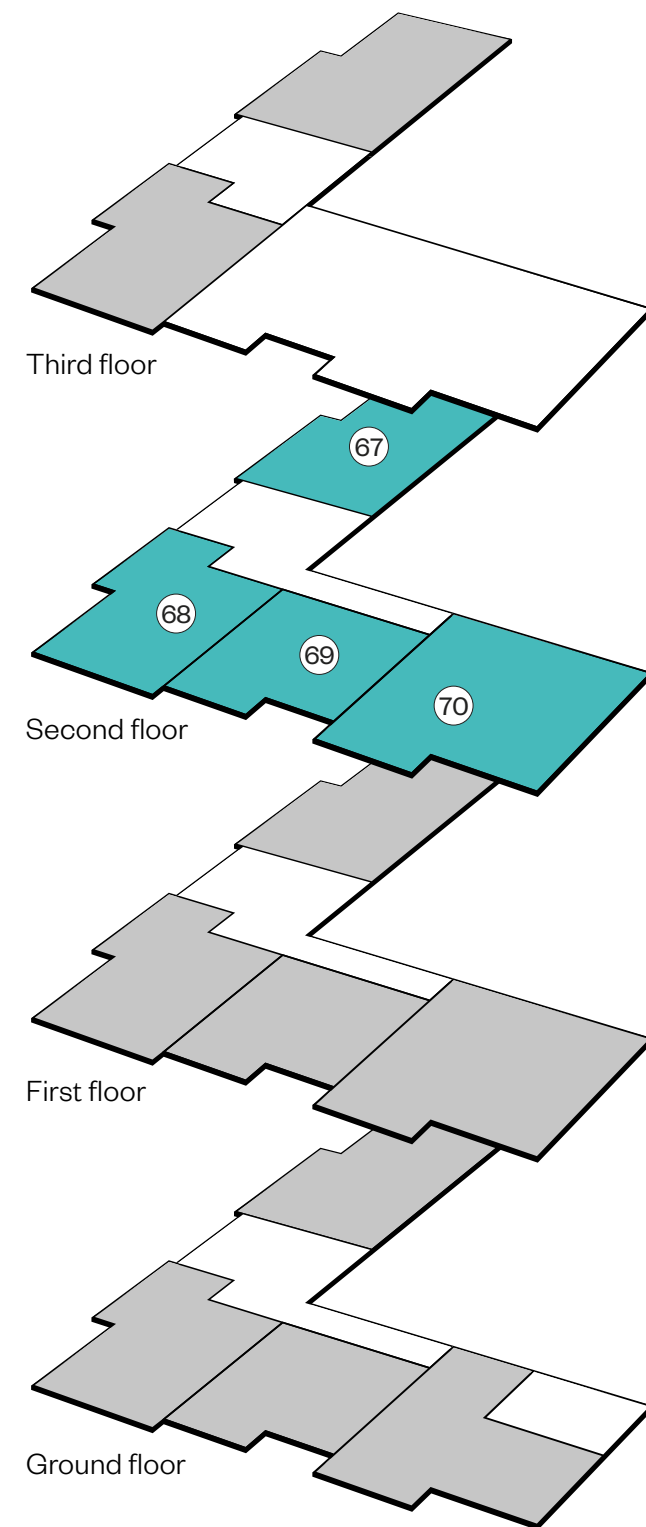
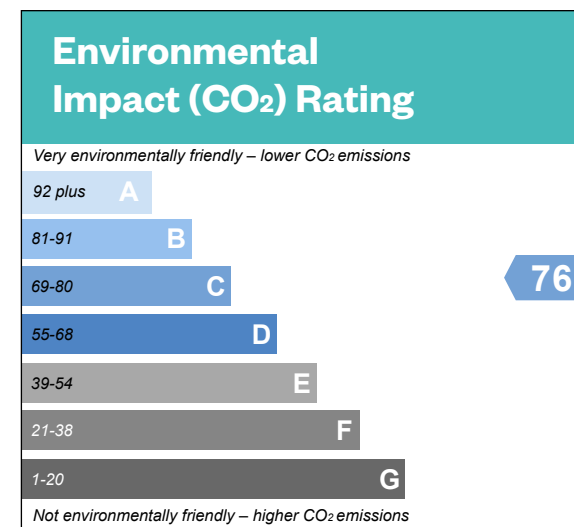
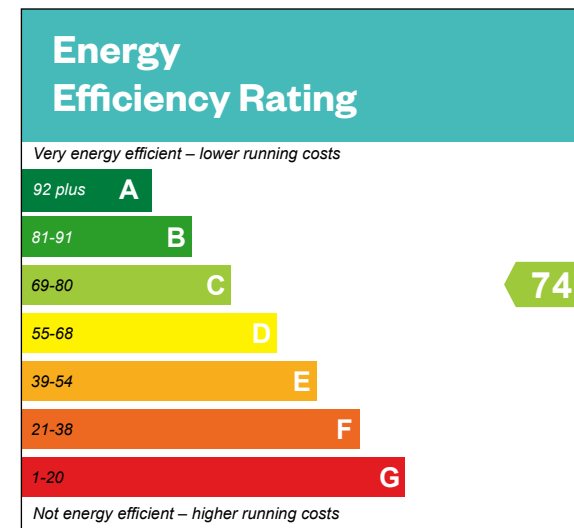


Please ask your Sales Consultant for further details. A/C: Airing cupboard. St: Storage cupboard. W: Wardrobe. EAHP: Exhaust Air Heat Pump. Please speak to Sales Consultant for plot specific Energy Efficiency and Environmental Impact rating.

Hale Apartments

Second floor

Plots 67, 68, 69 & 70 – as shown

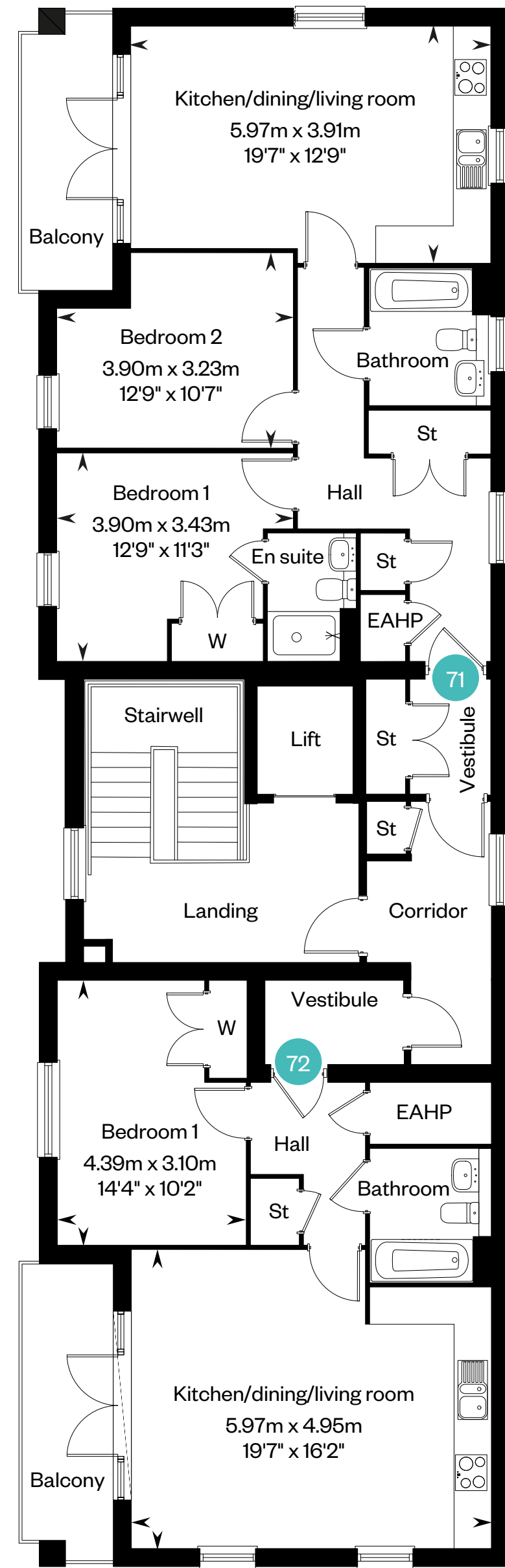
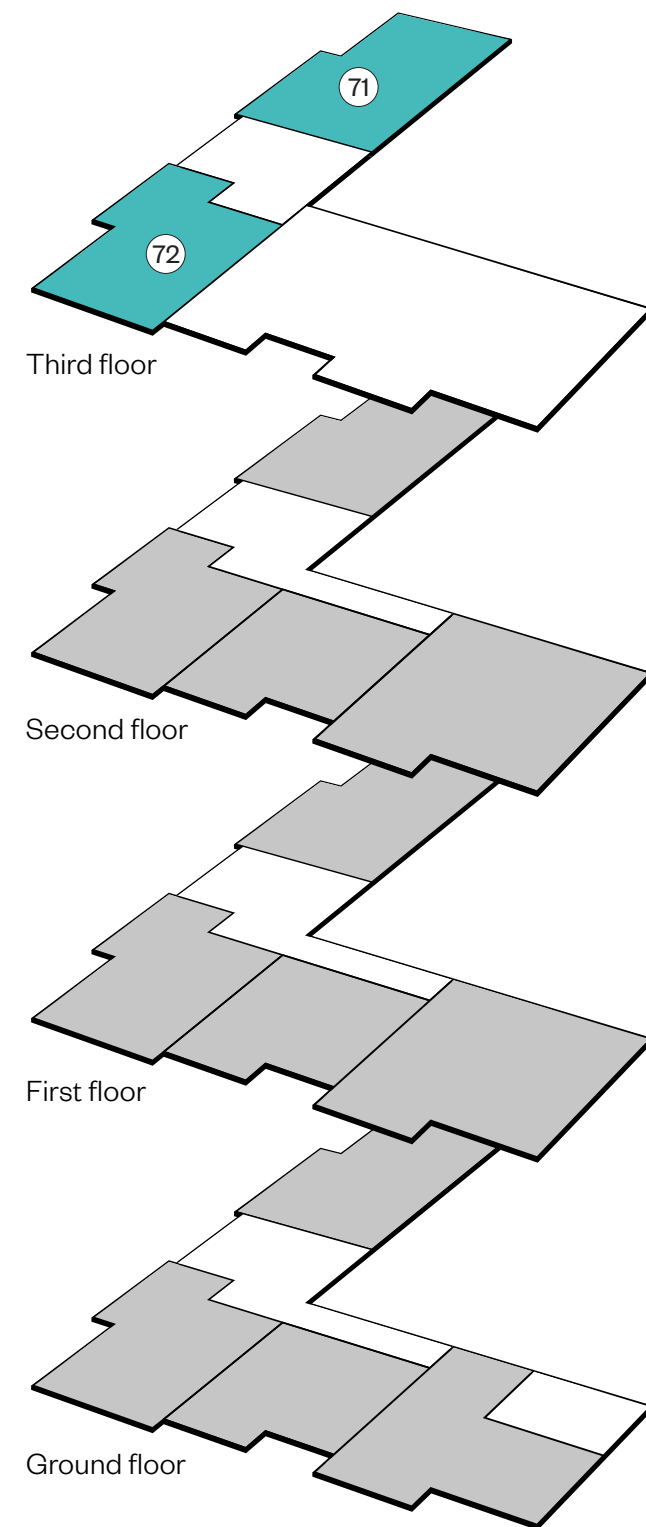
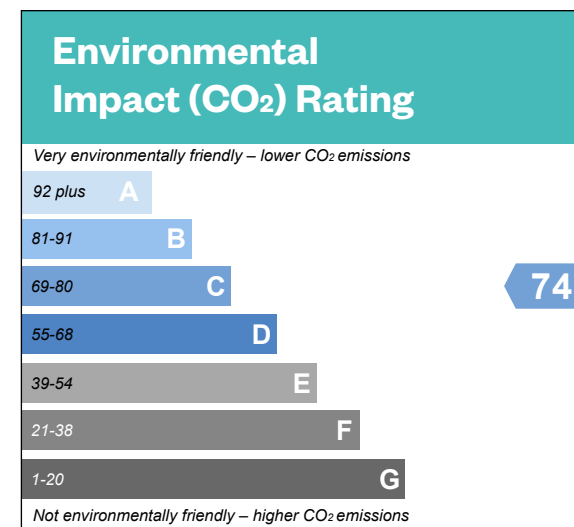
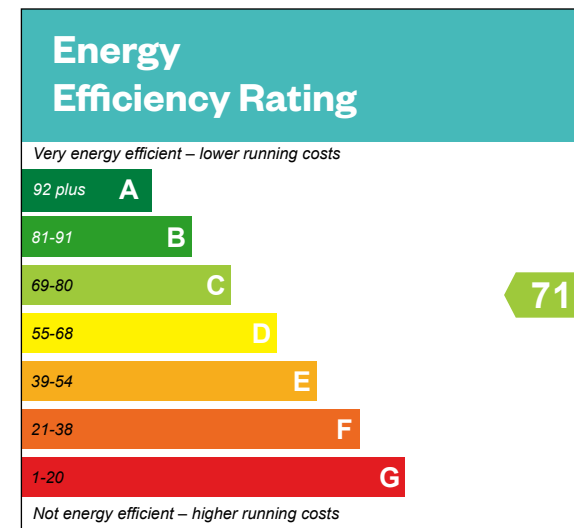


Please ask your Sales Consultant for further details. A/C: Airing cupboard. St: Storage cupboard. W: Wardrobe. EAHP: Exhaust Air Heat Pump. Please speak to Sales Consultant for plot specific Energy Efficiency and Environmental Impact rating.

Hale Apartments

Third floor

Plots 71 & 72 – as shown



Please ask your Sales Consultant for further details. A/C: Airing cupboard. St: Storage cupboard. W: Wardrobe. EAHP: Exhaust Air Heat Pump. Please speak to Sales Consultant for plot specific Energy Efficiency and Environmental Impact rating.

IMPORTANT NOTICE TO CUSTOMERS: The Consumer Protection from Unfair Trading Regulations 2008. Cala Homes (North Home Counties) Limited operates a policy of continual product development and the specifications outlined in this brochure are indicative only. The computer generated images and photographs do not necessarily represent the actual finishings/elevation or treatments, landscaping, furnishings and fittings at this development. Information contained is accurate at date of publication on 04.04.23. See the main brochure for the full Consumer Protection statement. This is a Predicted Energy Assessment for properties that are incomplete. Once the property is completed, this rating will be updated and an official Energy Performance Certificate will be created for the property.