

Aylett's Green

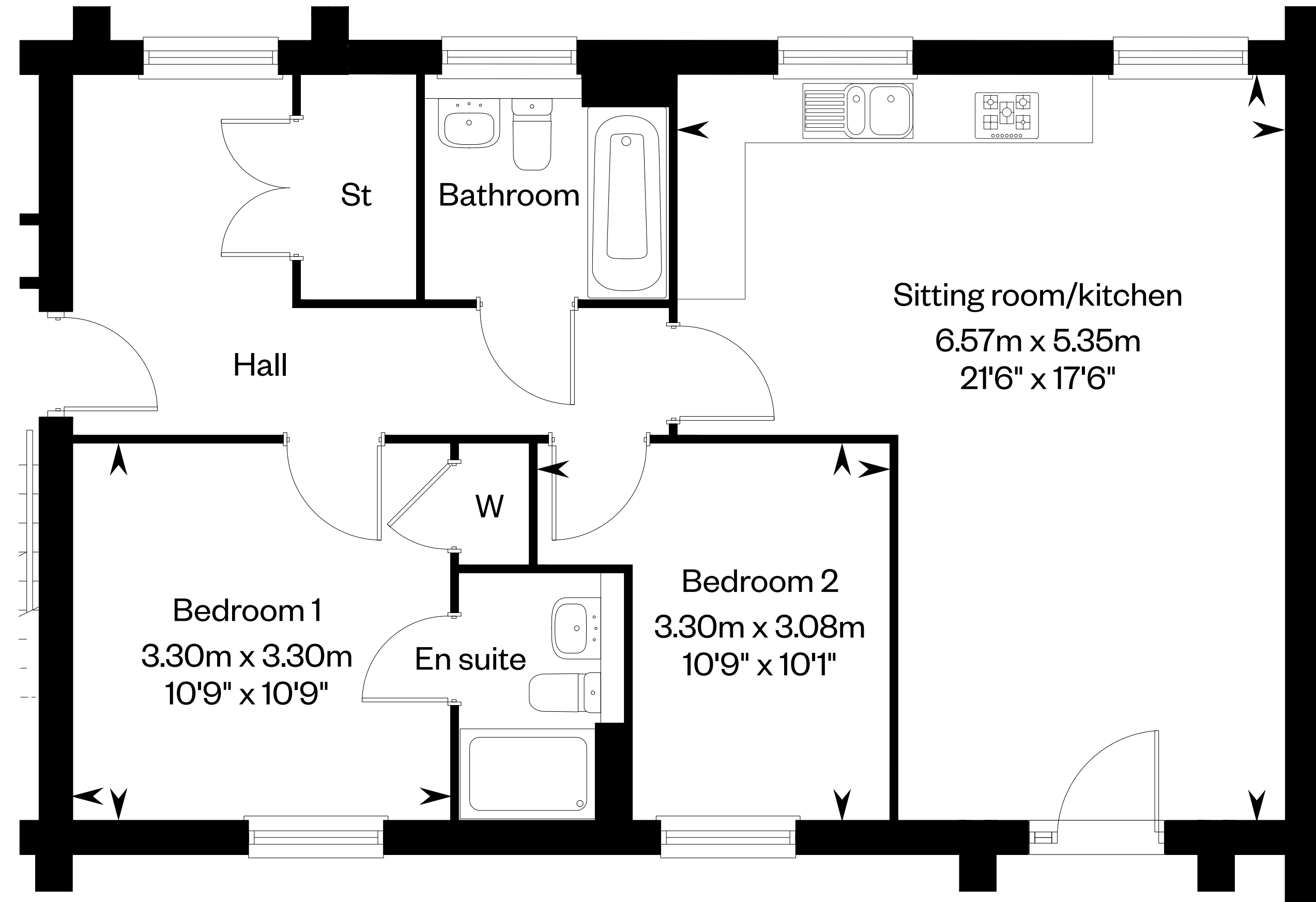
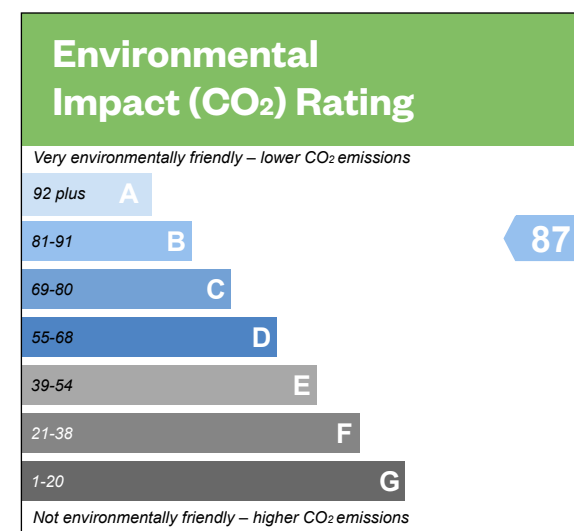
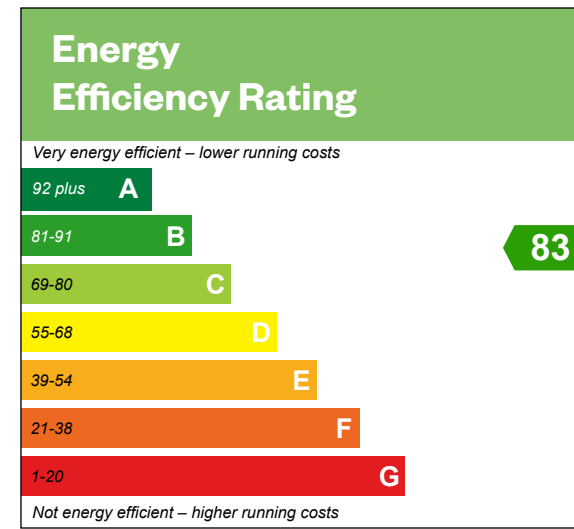
Kershope Apartments 1 & 2 bedroom apartments



Kershope Apartments

Ground floor

Plot 172 – as shown



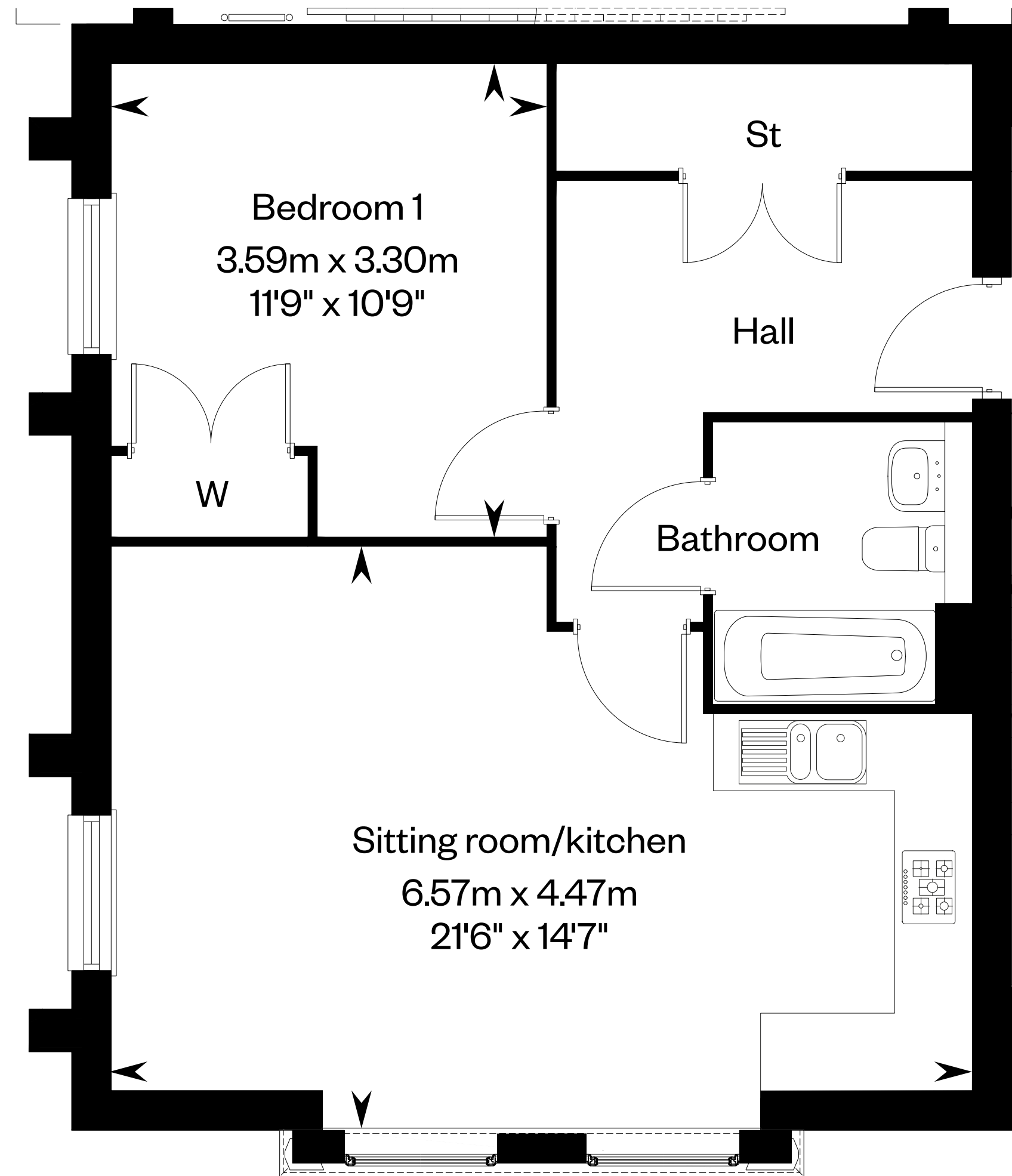
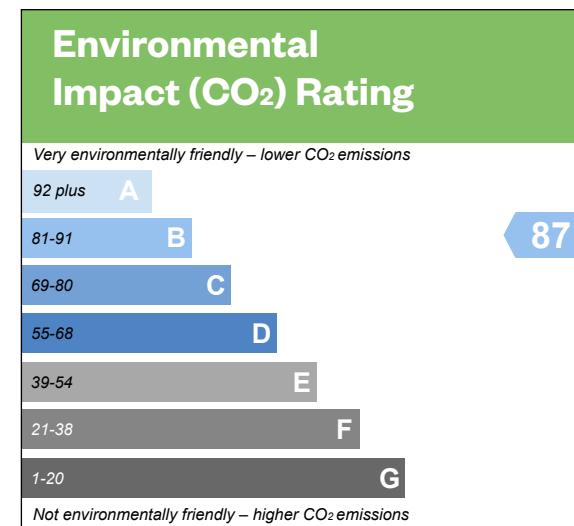
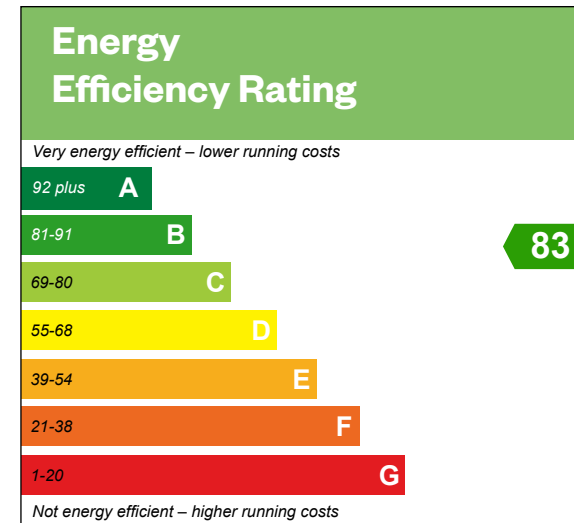
Kershope Apartments

Ground floor

Plot 171 – as shown

First floor

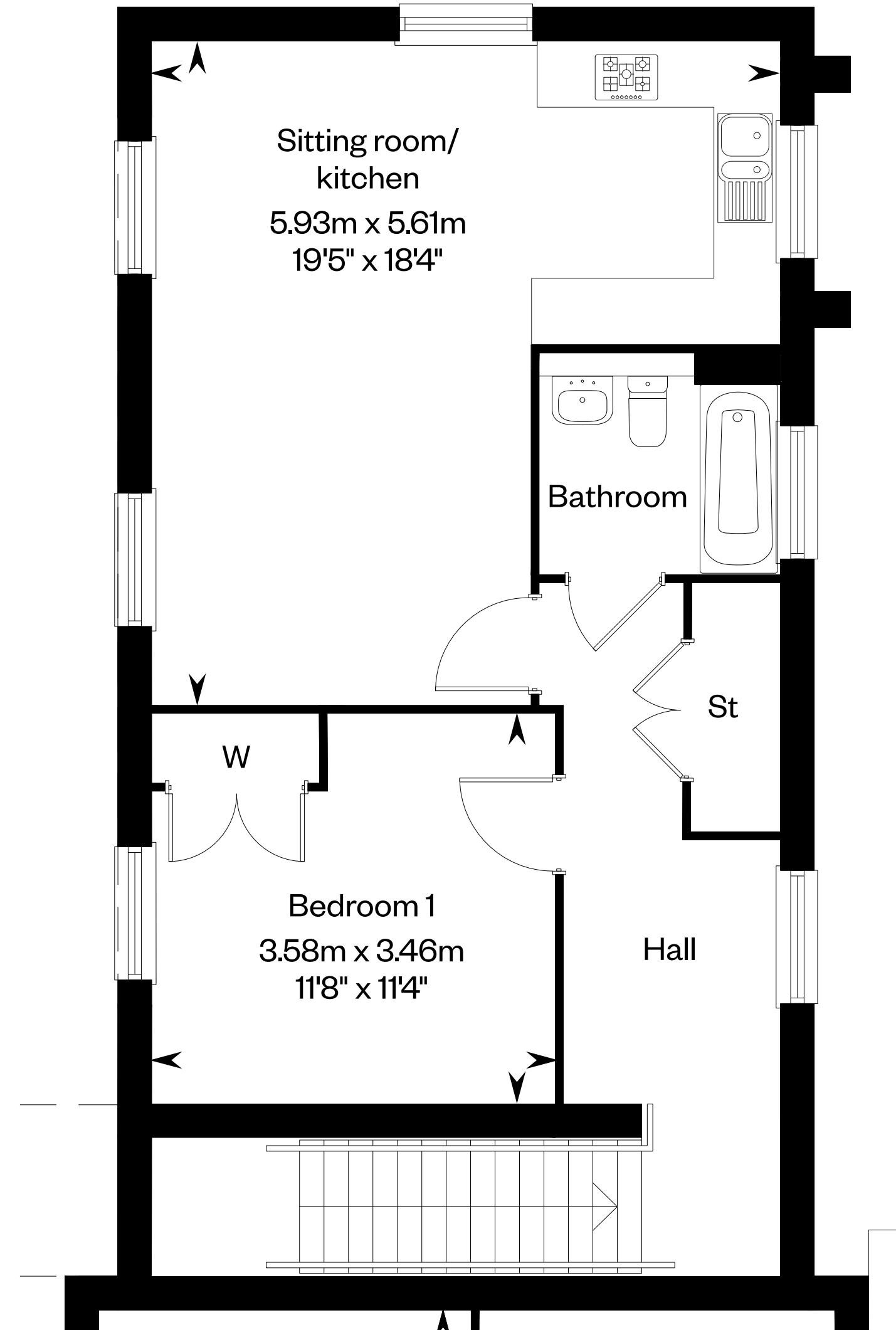
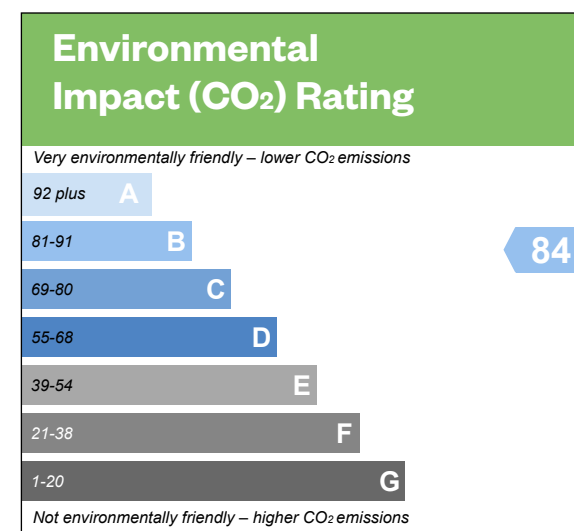
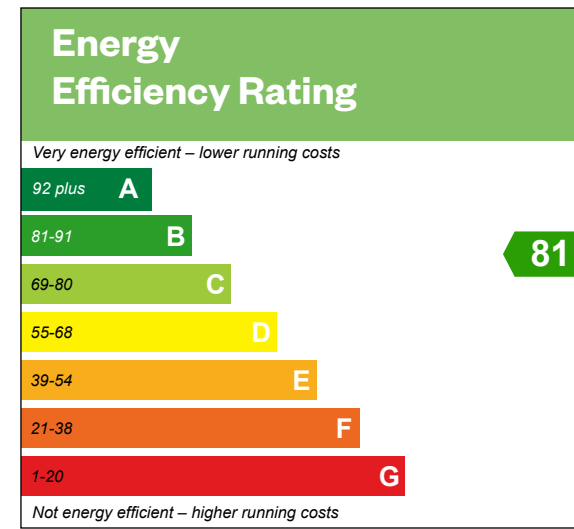
Plot 173– as shown



Kershope Apartments

First floor

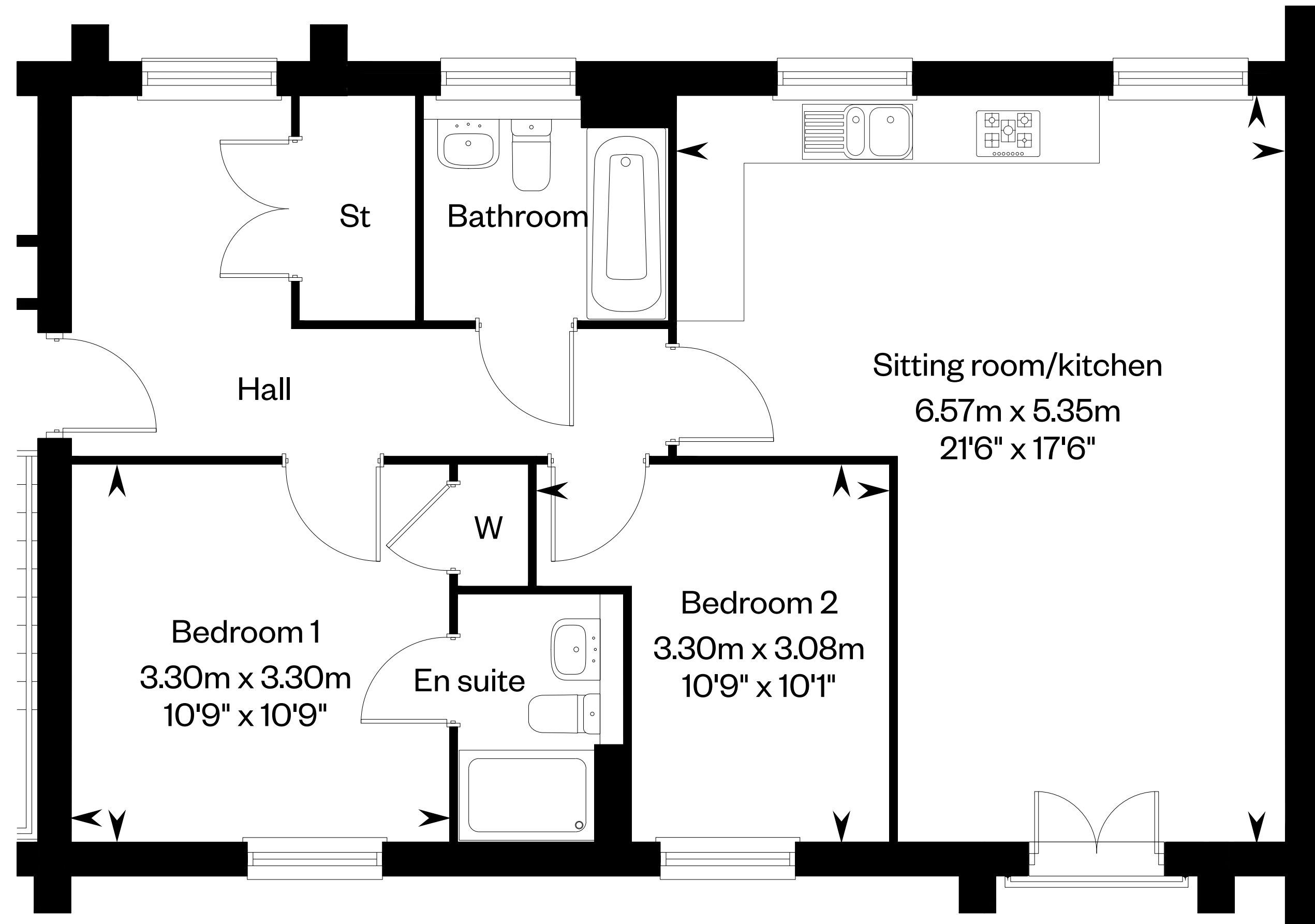
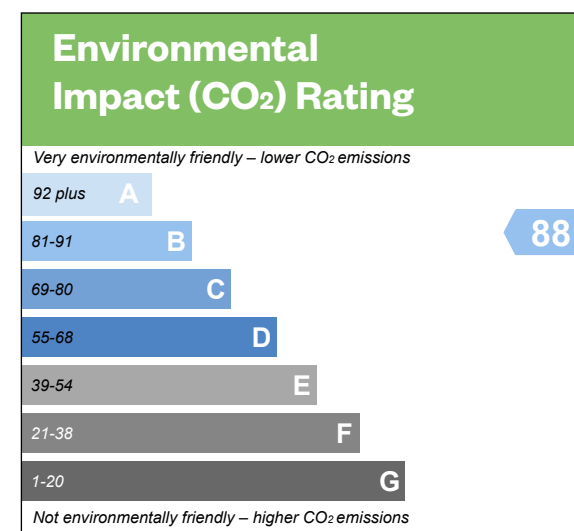
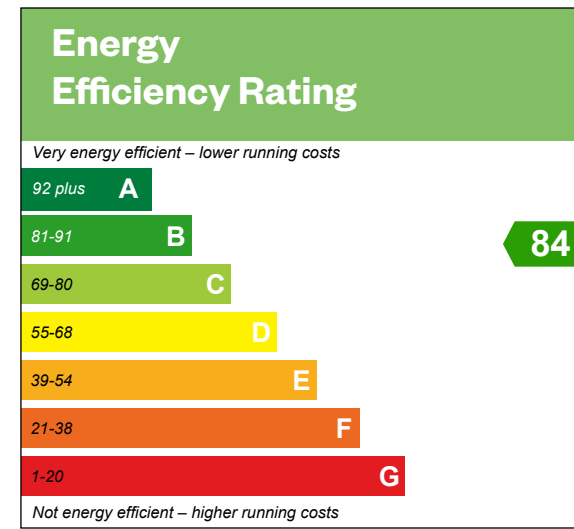
Plot 170* – as shown



Kershope Apartments

First floor

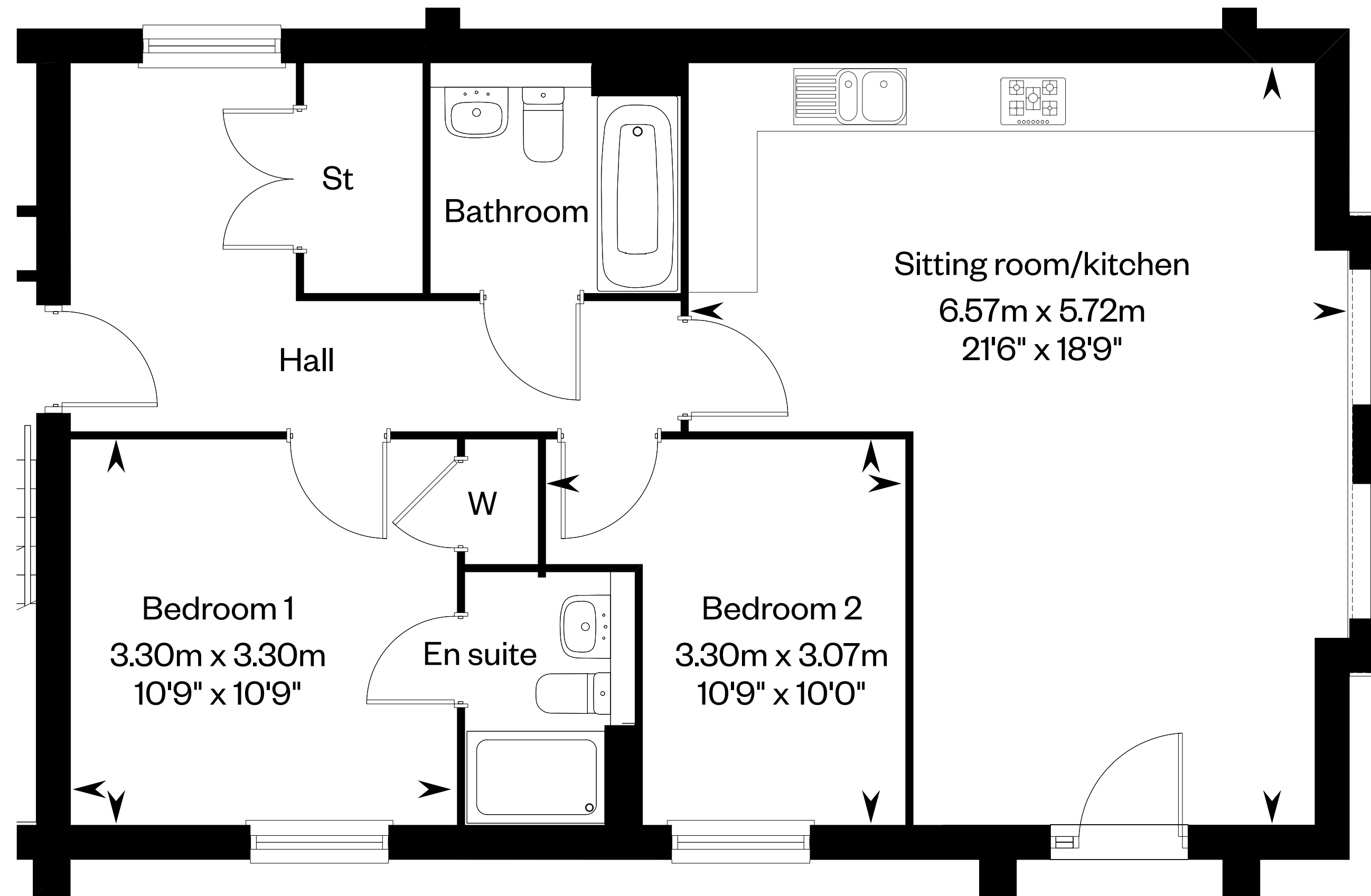
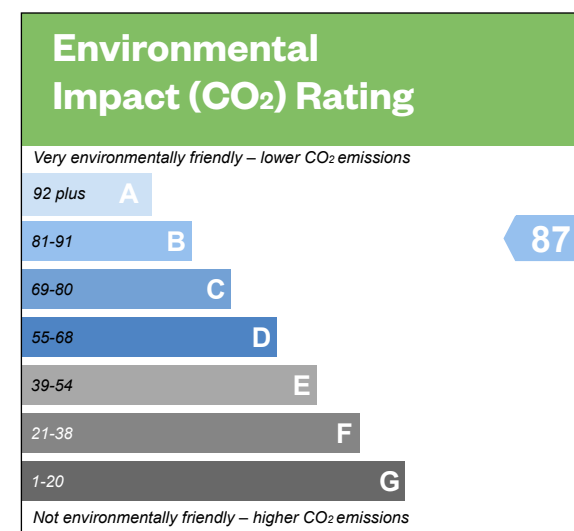
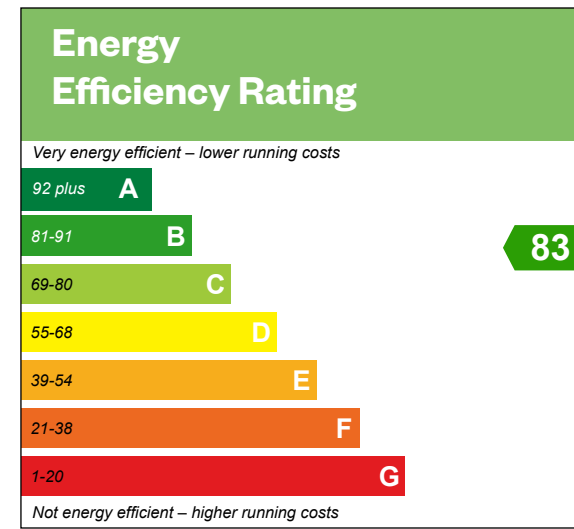
Plot 174 – as shown



Kershope Apartments

Ground floor

Plot 176 – as shown



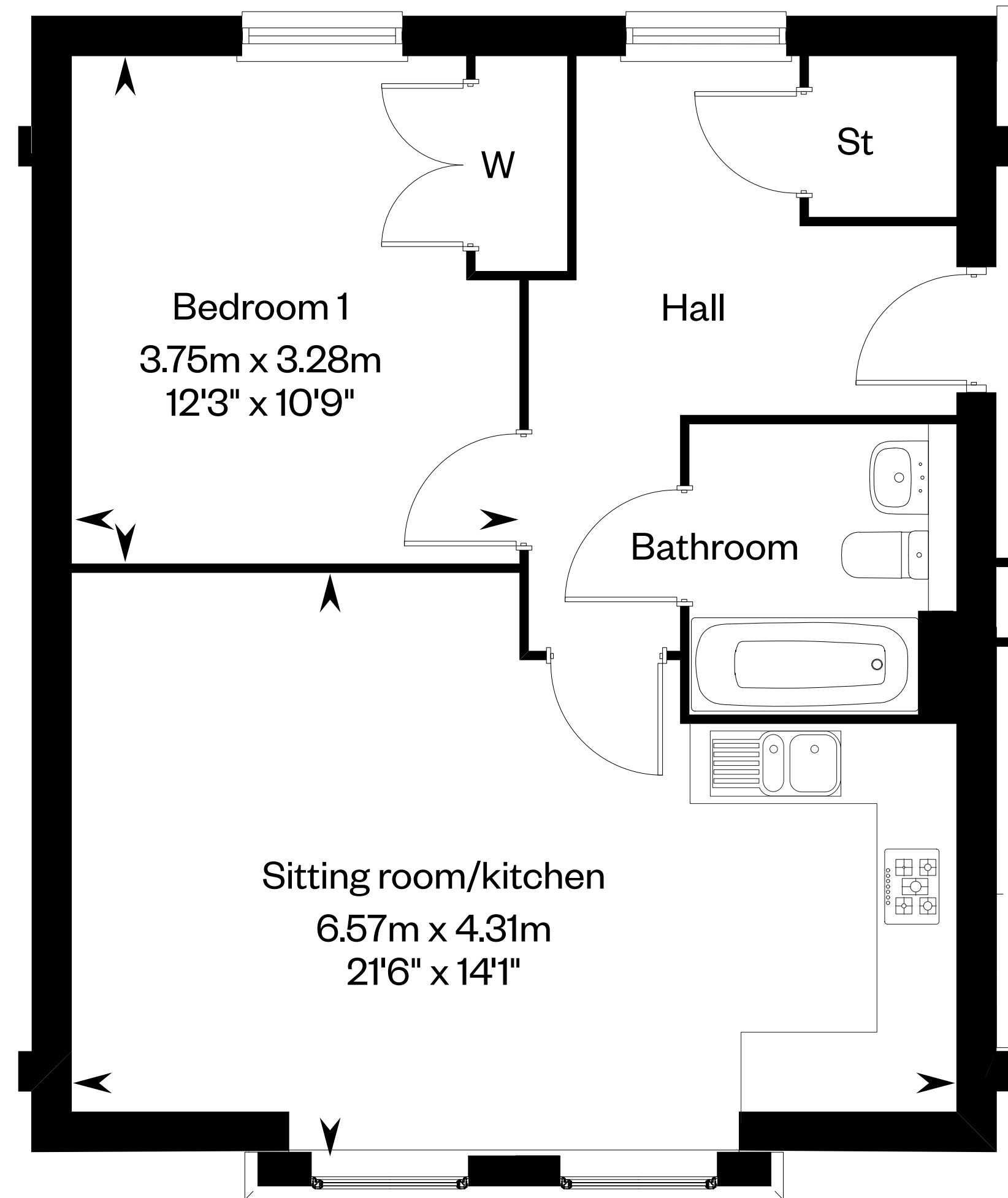
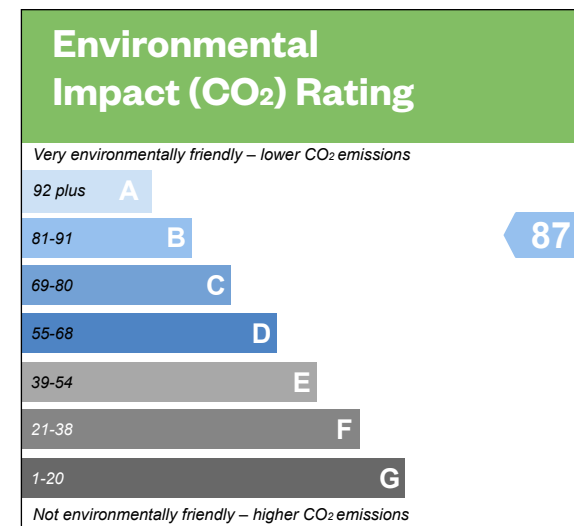
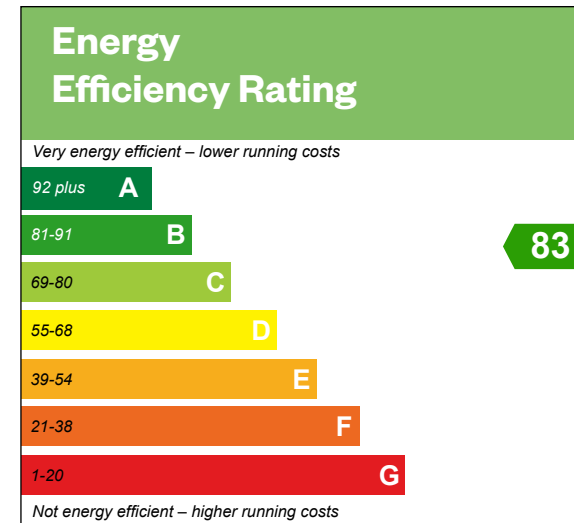
Kershope Apartments

Ground floor

Plot 175 – as shown

First floor

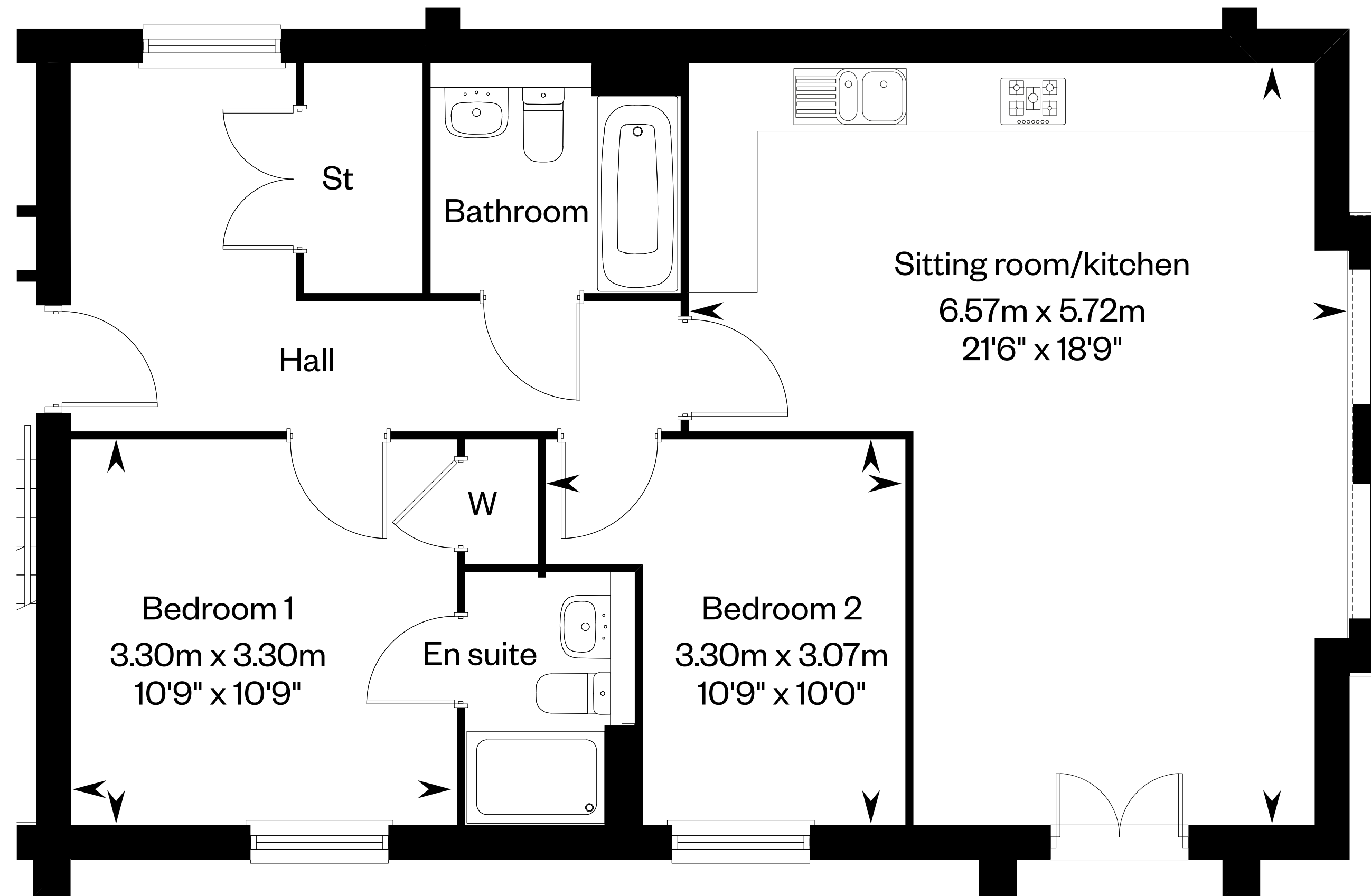
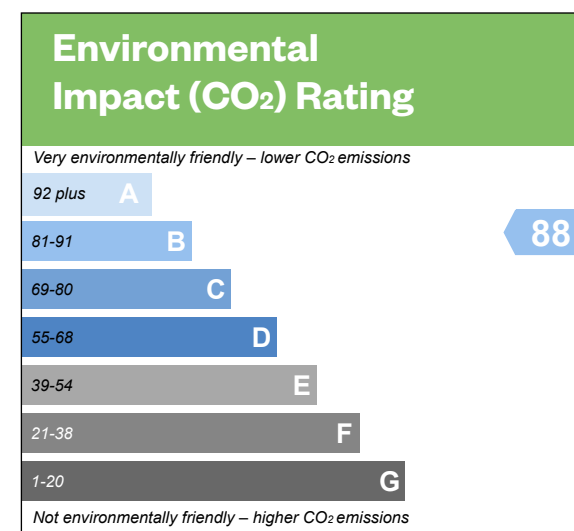
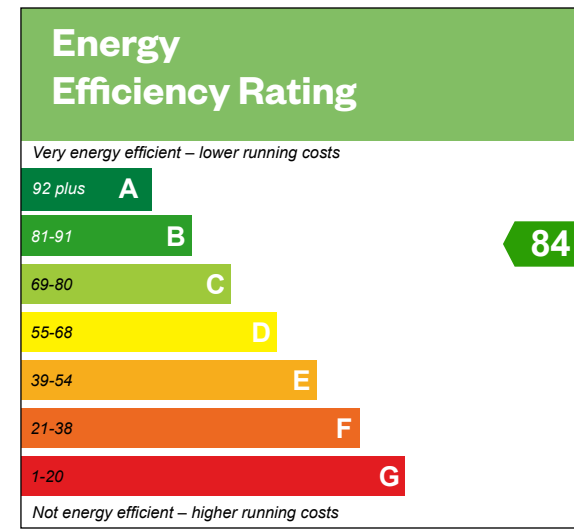
Plot 177– as shown



Kershope Apartments

First floor

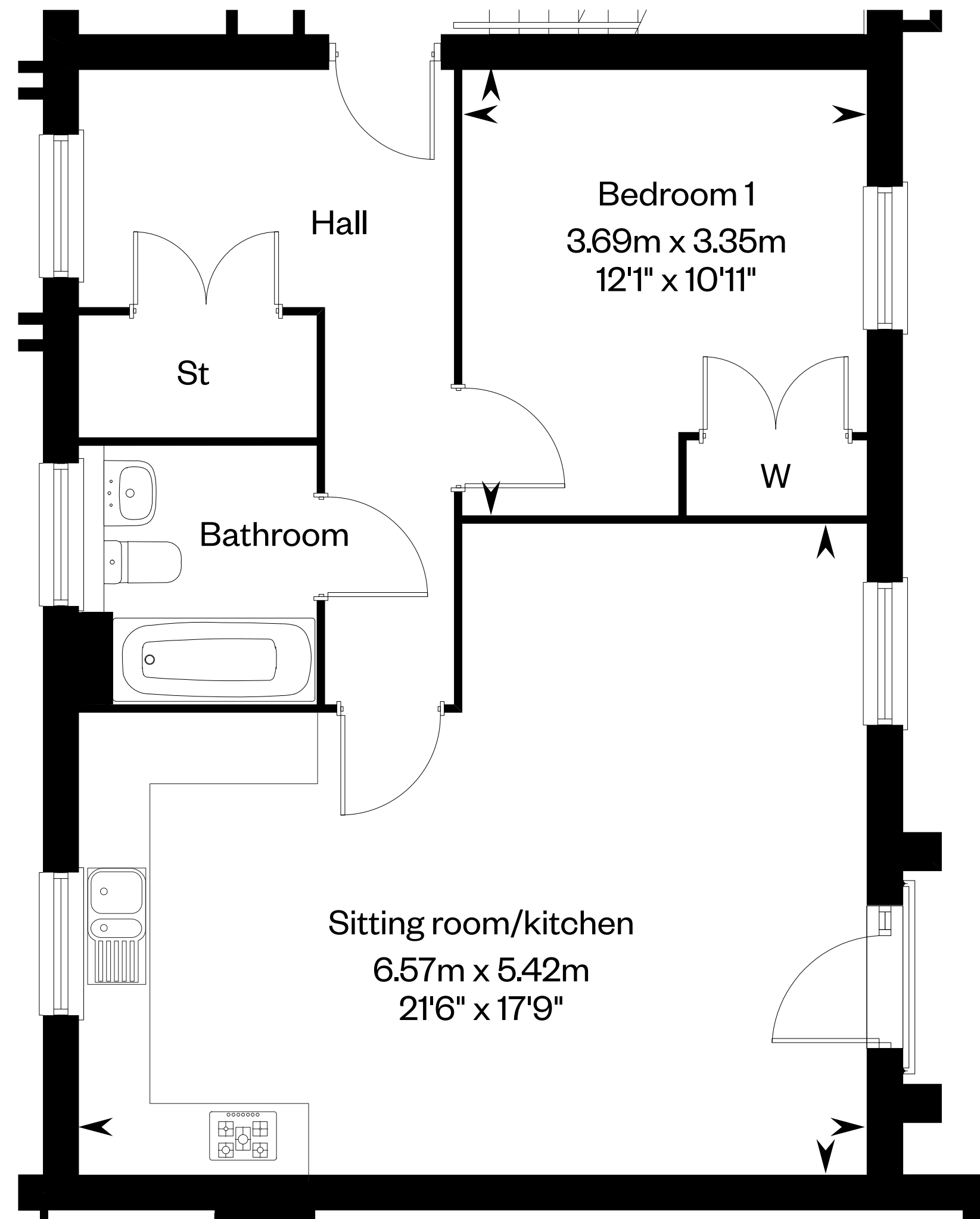
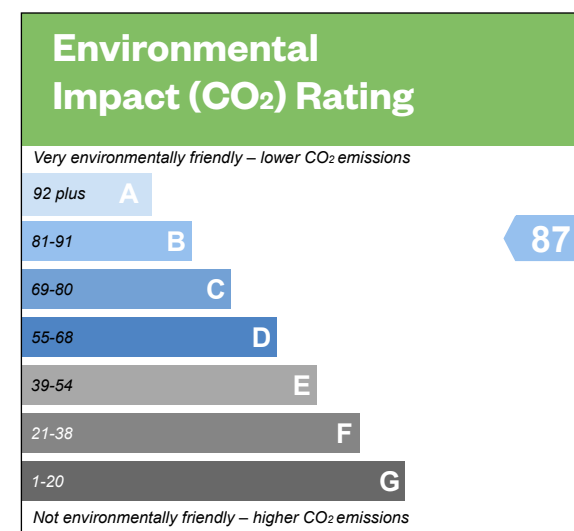
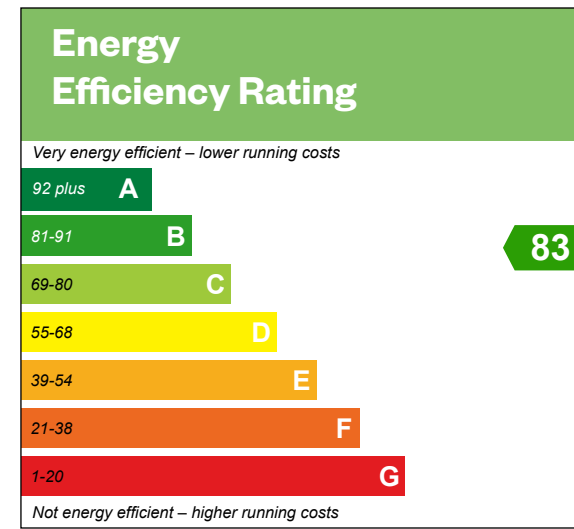
Plot 178 – as shown



Kershope Apartments

Ground floor

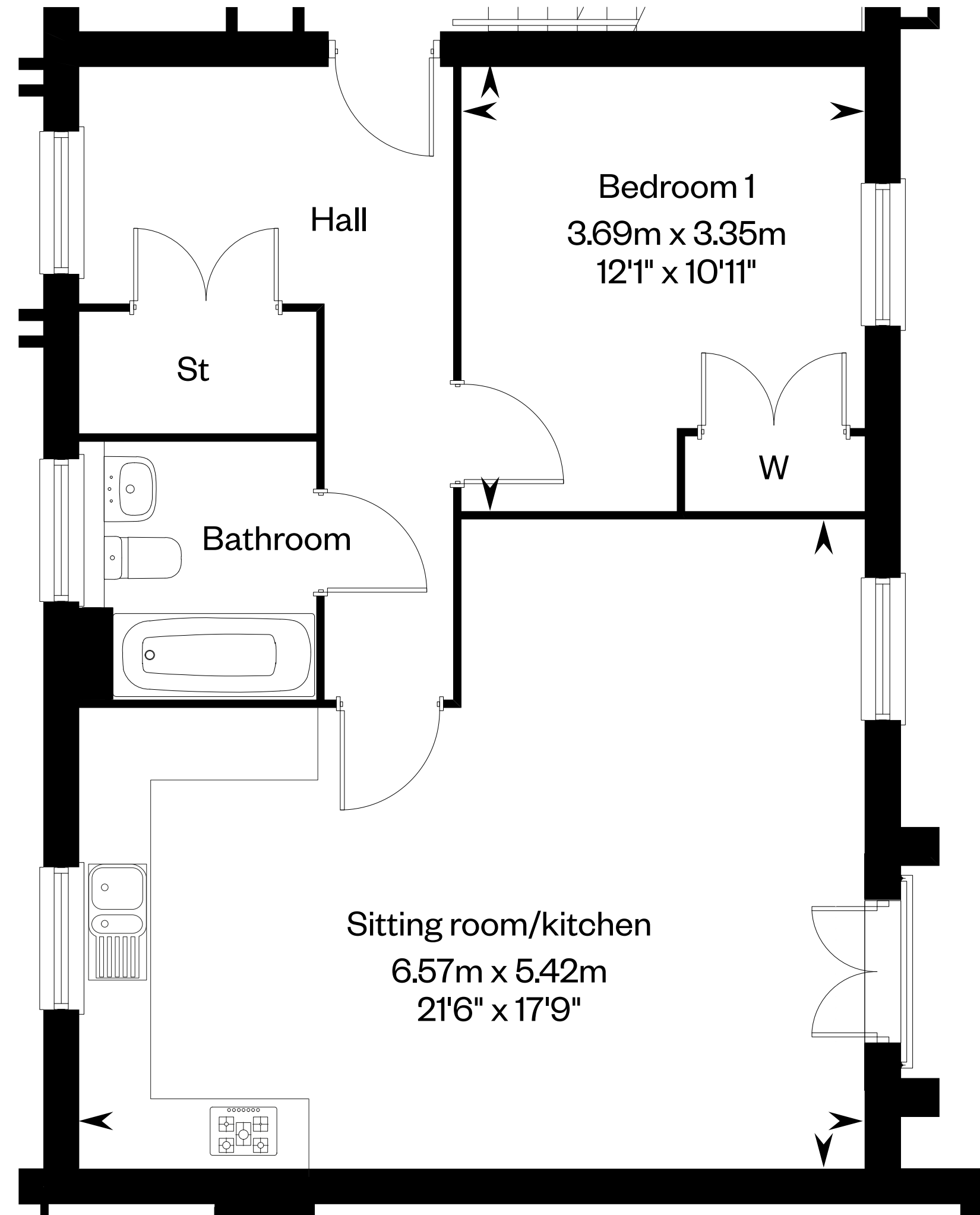
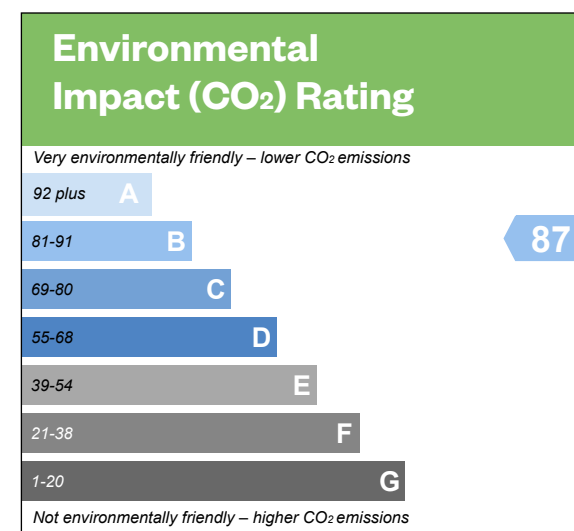
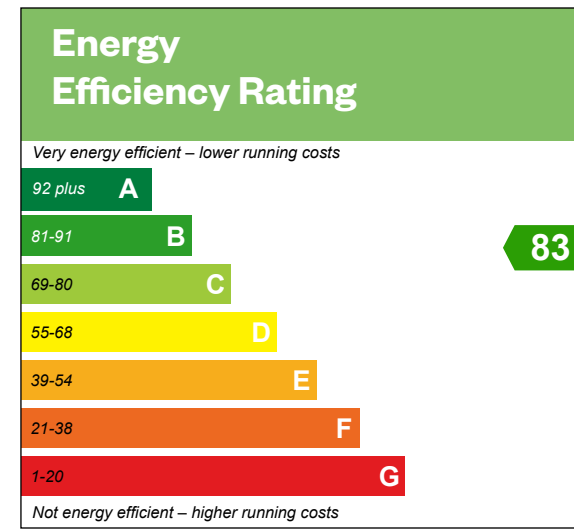
Plot 179 – as shown



Kershope Apartments

First floor

Plot 180 – as shown



Please ask your Sales Consultant for further details. St: Store cupboard. W: Wardrobe.

IMPORTANT NOTICE TO CUSTOMERS: The Consumer Protection from Unfair Trading Regulations 2008. Cala Homes (North Home Counties) Limited operates a policy of continual product development and the specifications outlined in this brochure are indicative only. The computer generated images and photographs do not necessarily represent the actual finishings/elevation or treatments, landscaping, furnishings and fittings at this development. Information contained is accurate at date of publication on 17.05.22. See the main brochure for the full Consumer Protection statement. This is a Predicted Energy Assessment for properties that are incomplete. Once the property is completed, this rating will be updated and an official Energy Performance Certificate will be created for the property.