



# The Adam

2 bedroom terraced home

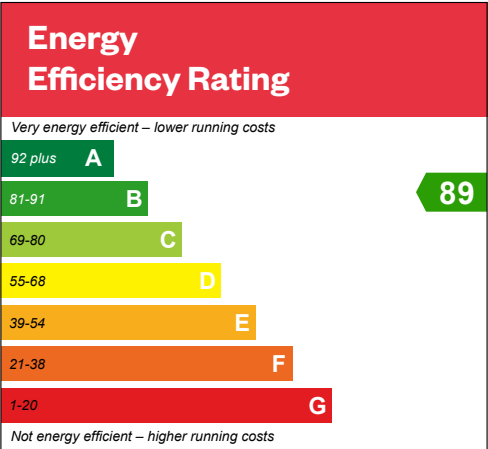


# The Adam

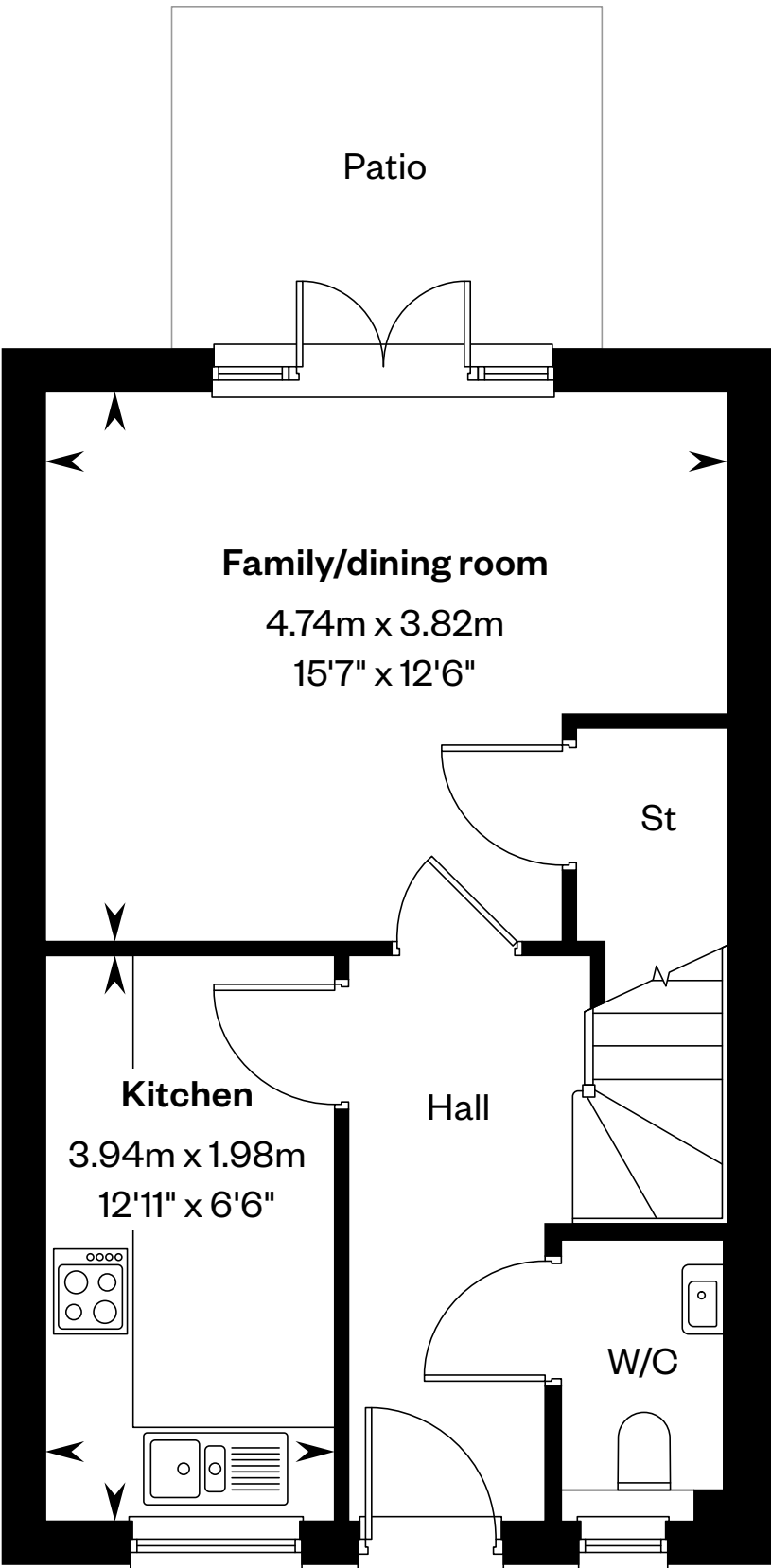
## 2 bedroom terraced home

Plots 35, 36, 37, 53, 84, 85, 86 & 87 – as shown

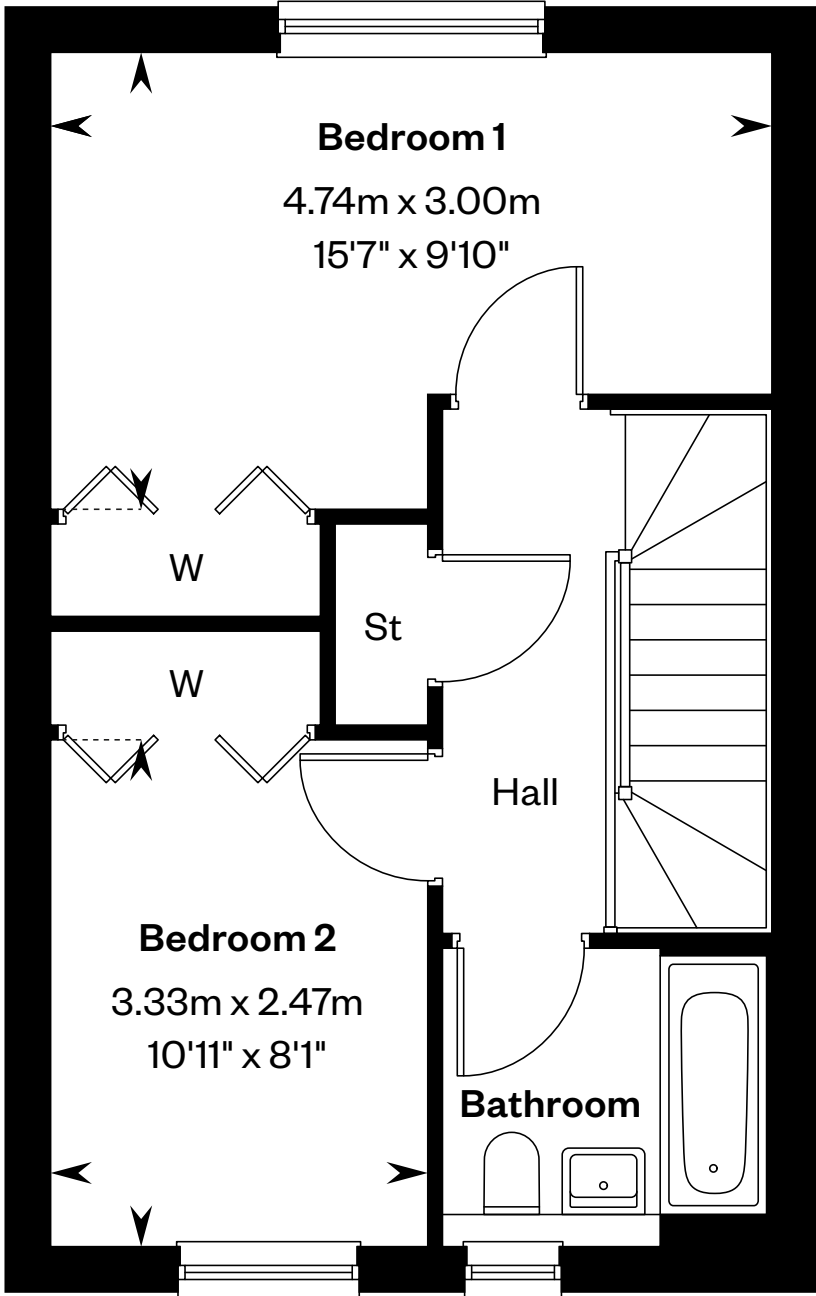
Plots 50, 51, 52, 88, 89, 90 & 91 – handed



This is a Predicted Energy Assessment for properties that are incomplete. Once the property is completed, this rating will be updated and an official Energy Performance Certificate will be created for the property.



Ground floor



First floor

Please ask your Sales Consultant for further details. ST: Store cupboard. W: Wardrobe.

IMPORTANT NOTICE TO CUSTOMERS: The Consumer Protection from Unfair Trading Regulations 2008. Cala Homes (East) Limited operates a policy of continual product development and the specifications outlined in this brochure are indicative only. The computer generated images and photographs do not necessarily represent the actual finishings/elevation or treatments, landscaping, furnishings and fittings at this development. Information contained is accurate at date of publication on 13.08.2025. See the main brochure for the full Consumer Protection statement.



# The Allan

2 bedroom detached home

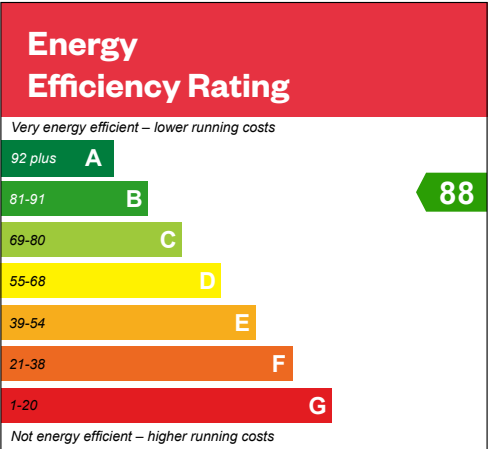


Computer Generated Image - The Allan

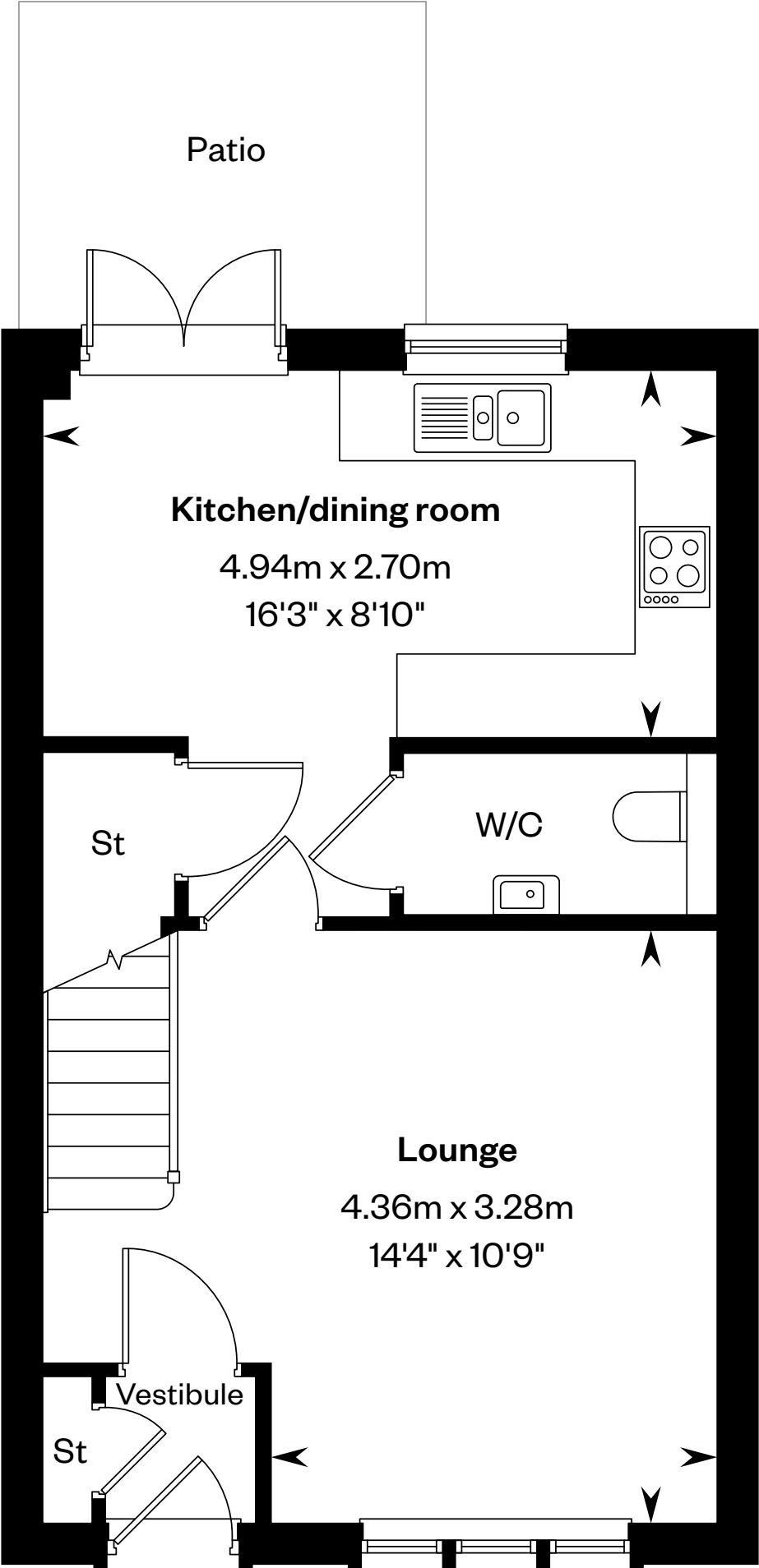
# The Allan

## 3 bedroom detached home

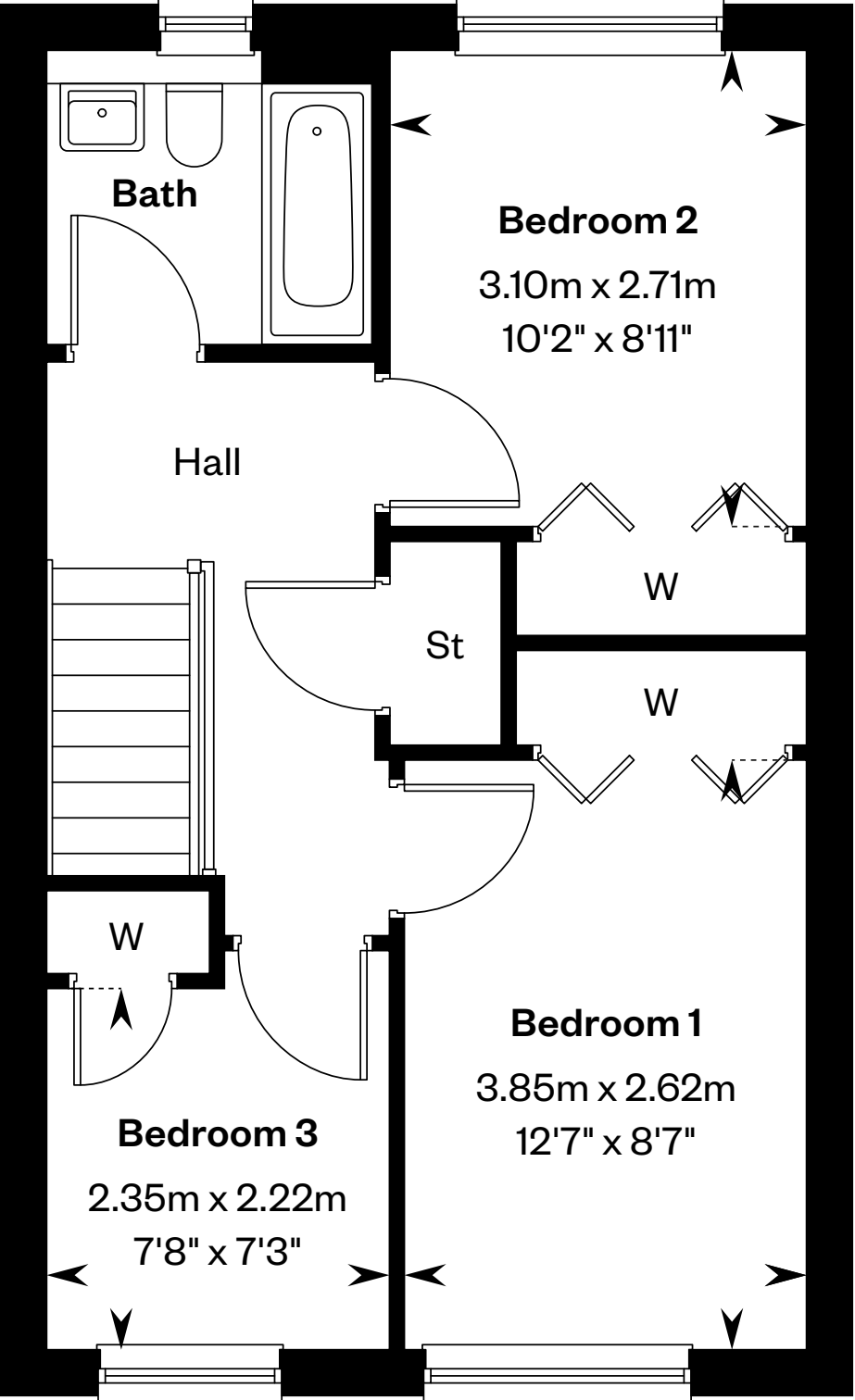
Plots 31, 78, 79 & 80 – handed



This is a Predicted Energy Assessment for properties that are incomplete. Once the property is completed, this rating will be updated and an official Energy Performance Certificate will be created for the property.



Ground floor



First floor

St: Store cupboard. W: Wardrobe.

IMPORTANT NOTICE TO CUSTOMERS: The Consumer Protection from Unfair Trading Regulations 2008. Cala Homes (East) Limited operates a policy of continual product development and the specifications outlined in this brochure are indicative only. The computer generated images and photographs do not necessarily represent the actual finishings/elevation or treatments, landscaping, furnishings and fittings at this development. Information contained is accurate at date of publication on 13.08.2025. See the main brochure for the full Consumer Protection statement.



# The Arran

3 bedroom end terraced home



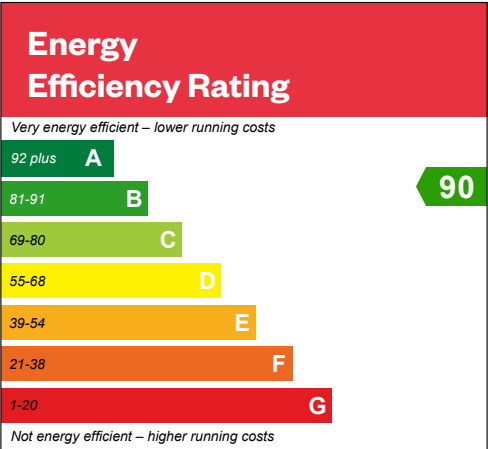
Computer Generated Image - The Arran

# The Arran

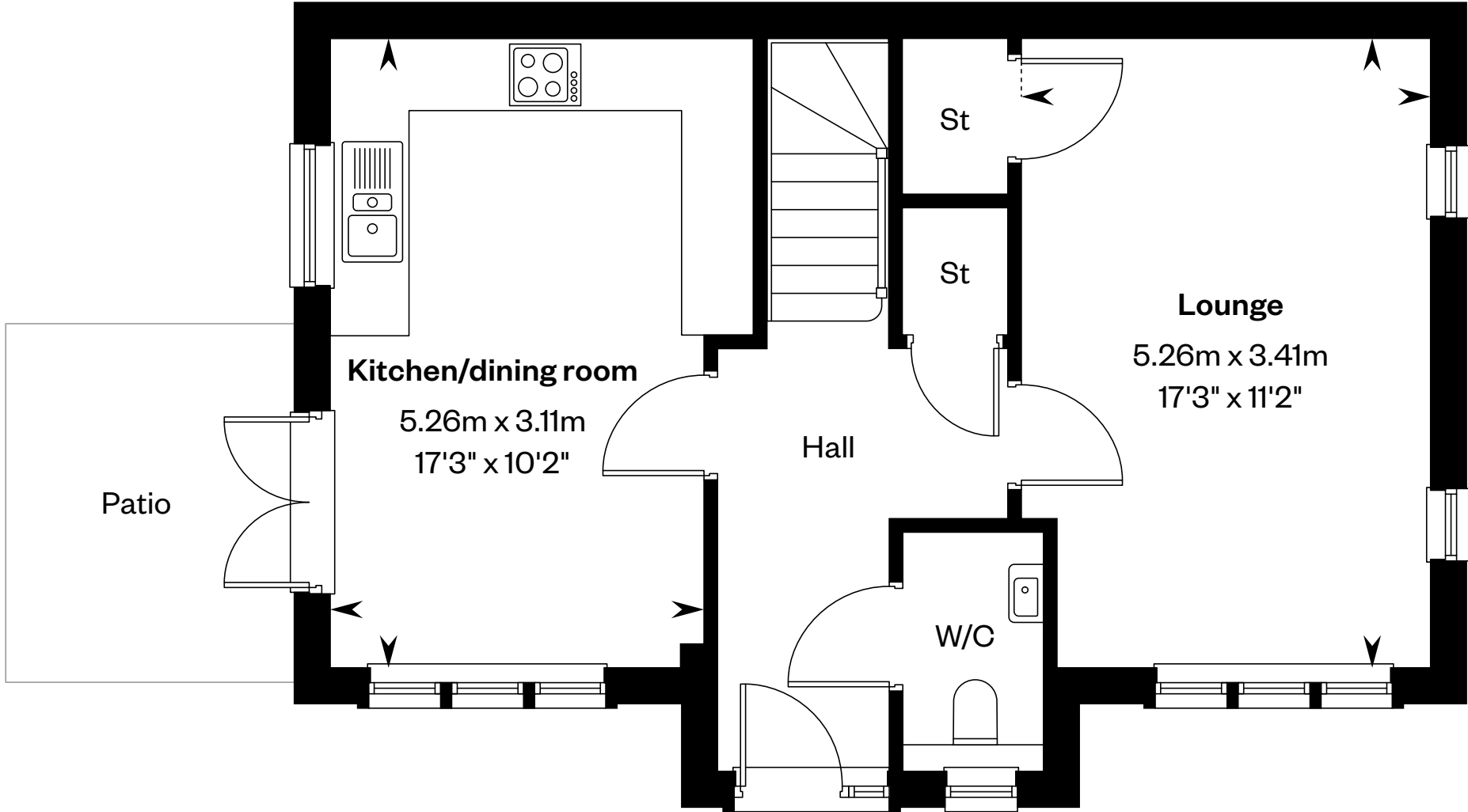
## 3 bedroom end terraced home

Plot 77 – as shown

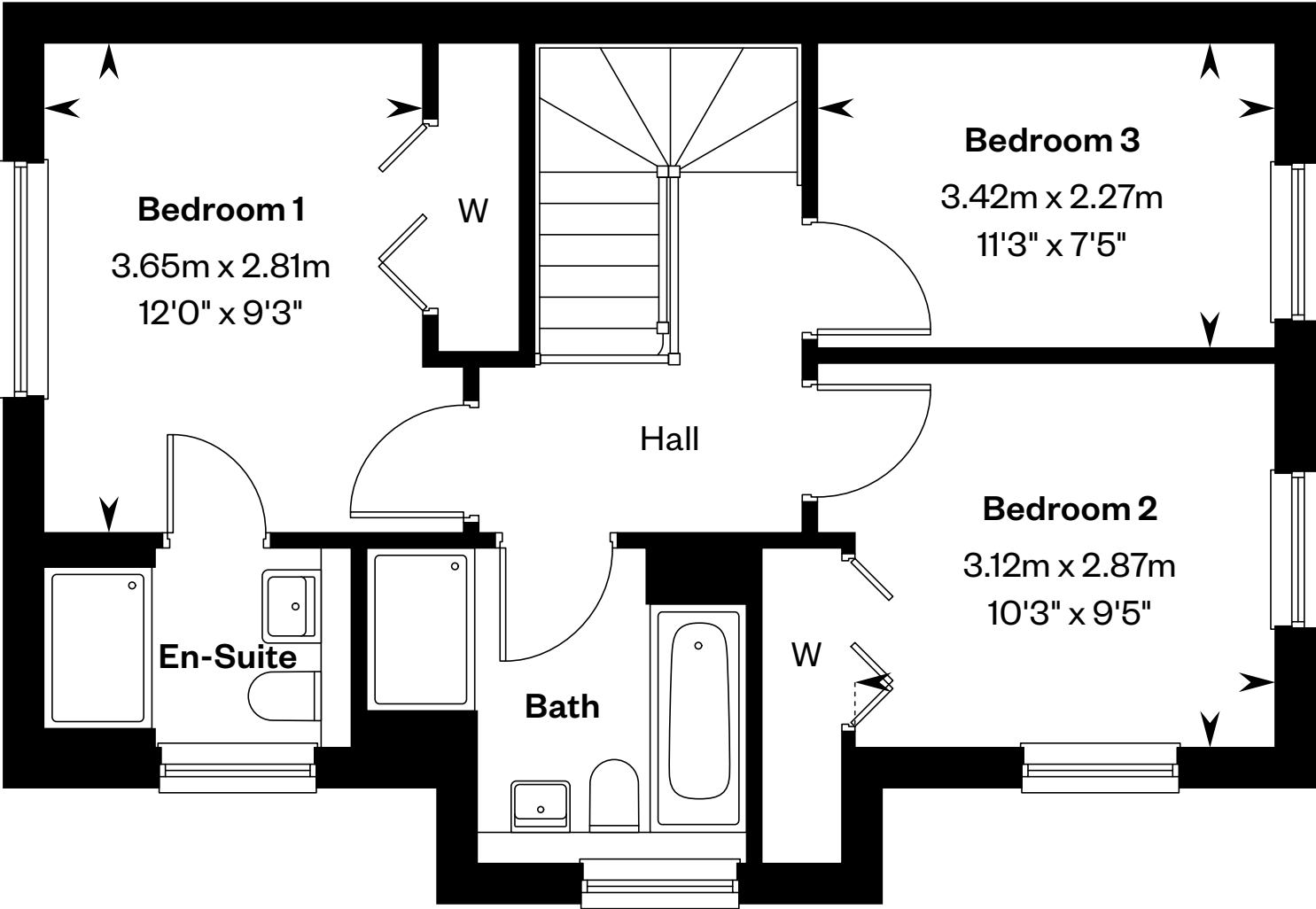
Plot 34 – handed



This is a Predicted Energy Assessment for properties that are incomplete. Once the property is completed, this rating will be updated and an official Energy Performance Certificate will be created for the property.



Ground floor



First floor

Please ask your Sales Consultant for further details. ST: Store cupboard. W: Wardrobe.

IMPORTANT NOTICE TO CUSTOMERS: The Consumer Protection from Unfair Trading Regulations 2008. Cala Homes (East) Limited operates a policy of continual product development and the specifications outlined in this brochure are indicative only. The computer generated images and photographs do not necessarily represent the actual finishings/elevation or treatments, landscaping, furnishings and fittings at this development. Information contained is accurate at date of publication on 13.08.2025. See the main brochure for the full Consumer Protection statement.



# The Balvenie

3 bedroom townhouse



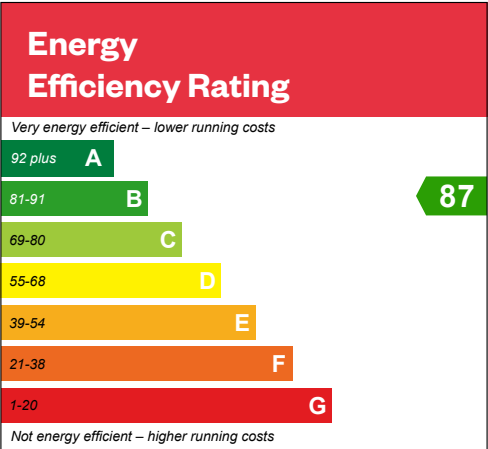
Computer Generated Image - The Balvenie

# The Balvenie

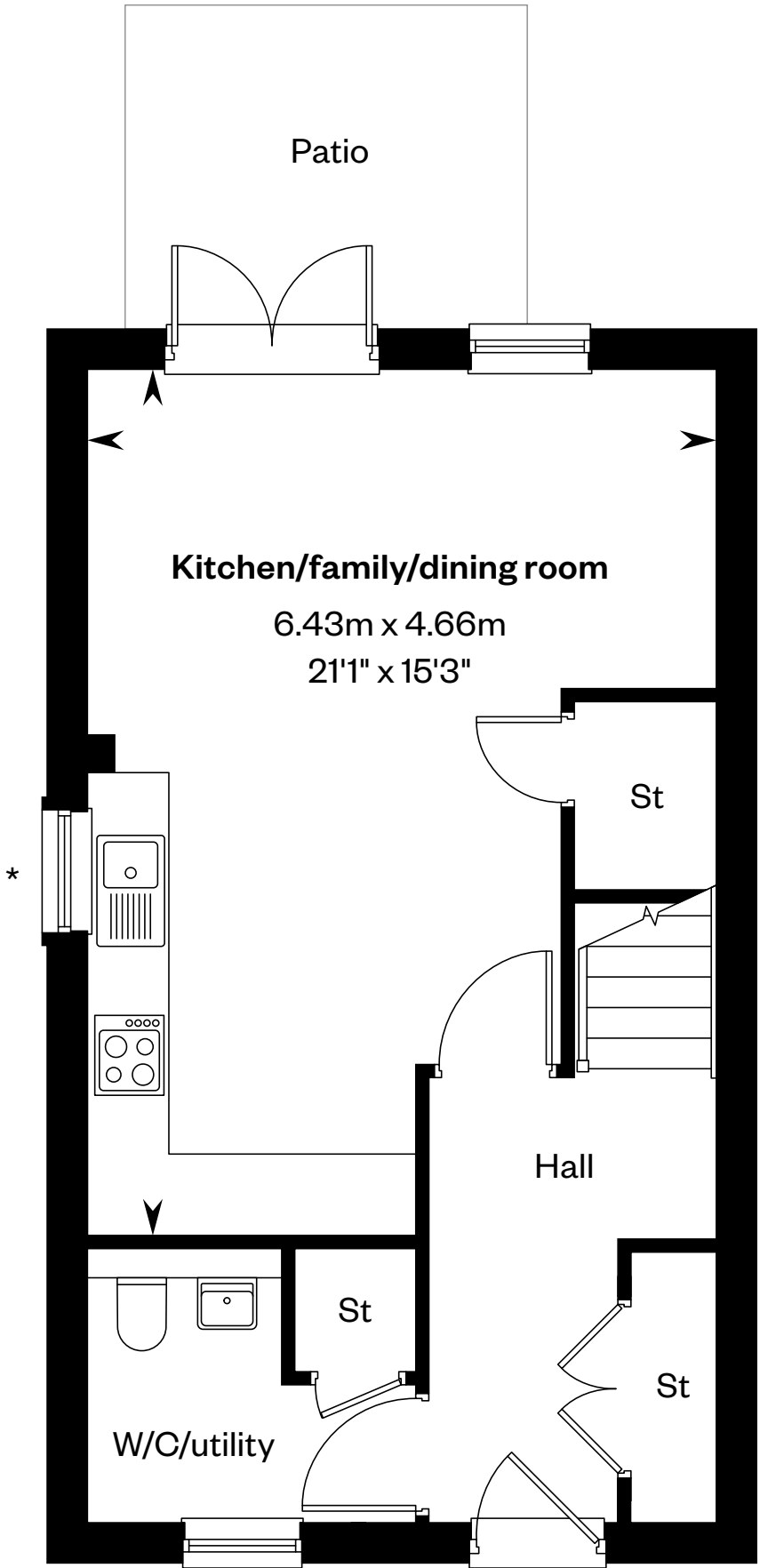
## 3 bedroom townhouse

Plots 199, 200, 206, 207, 211 & 212 – as shown

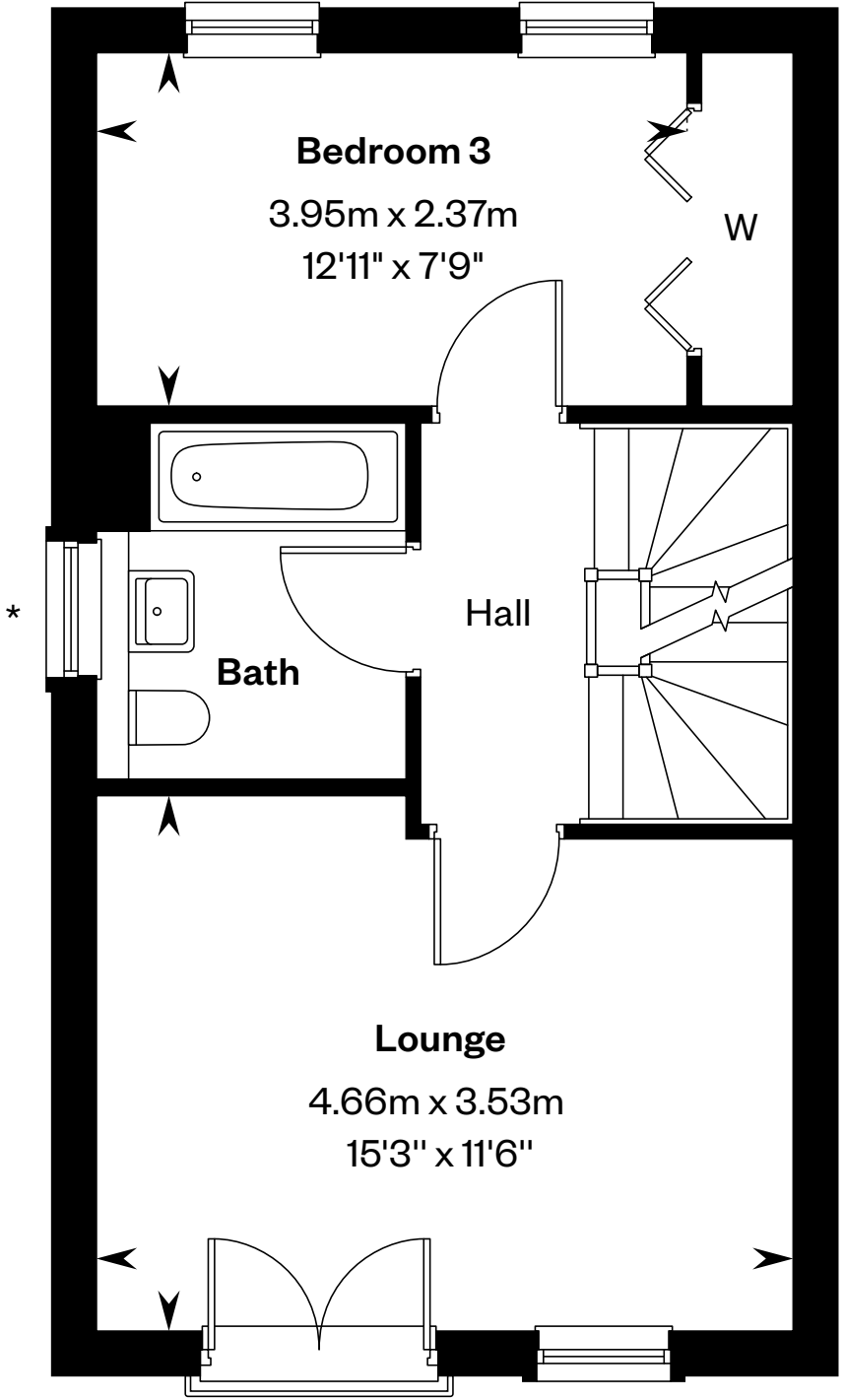
Plots 197, 198, 204, 205, 213 & 214 – handed



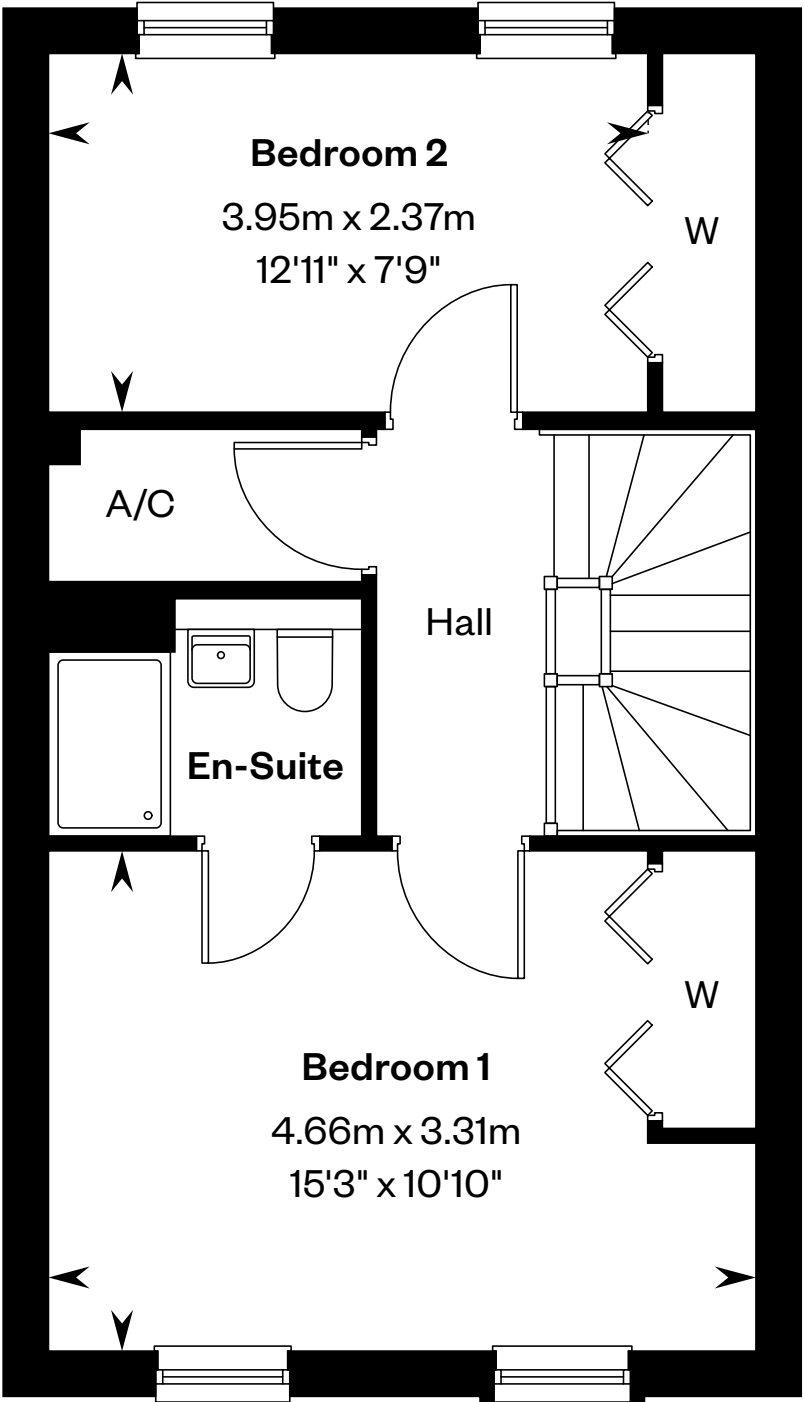
This is a Predicted Energy Assessment for properties that are incomplete. Once the property is completed, this rating will be updated and an official Energy Performance Certificate will be created for the property.



Ground floor



First floor



Second floor

\*Window to plots 211 & 214 only. Please ask your Sales Consultant for further details.

St: Store cupboard. W: Wardrobe.

IMPORTANT NOTICE TO CUSTOMERS: The Consumer Protection from Unfair Trading Regulations 2008. Cala Homes (East) Limited operates a policy of continual product development and the specifications outlined in this brochure are indicative only. The computer generated images and photographs do not necessarily represent the actual finishings/elevation or treatments, landscaping, furnishings and fittings at this development. Information contained is accurate at date of publication on 04.09.2025. See the main brochure for the full Consumer Protection statement.



# The Bute

4 bedroom terraced home

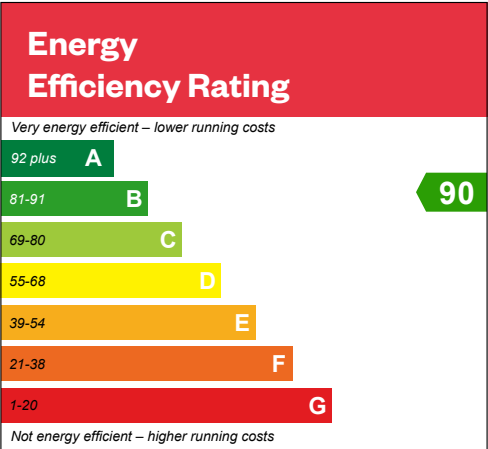


Computer Generated Image - The Bute

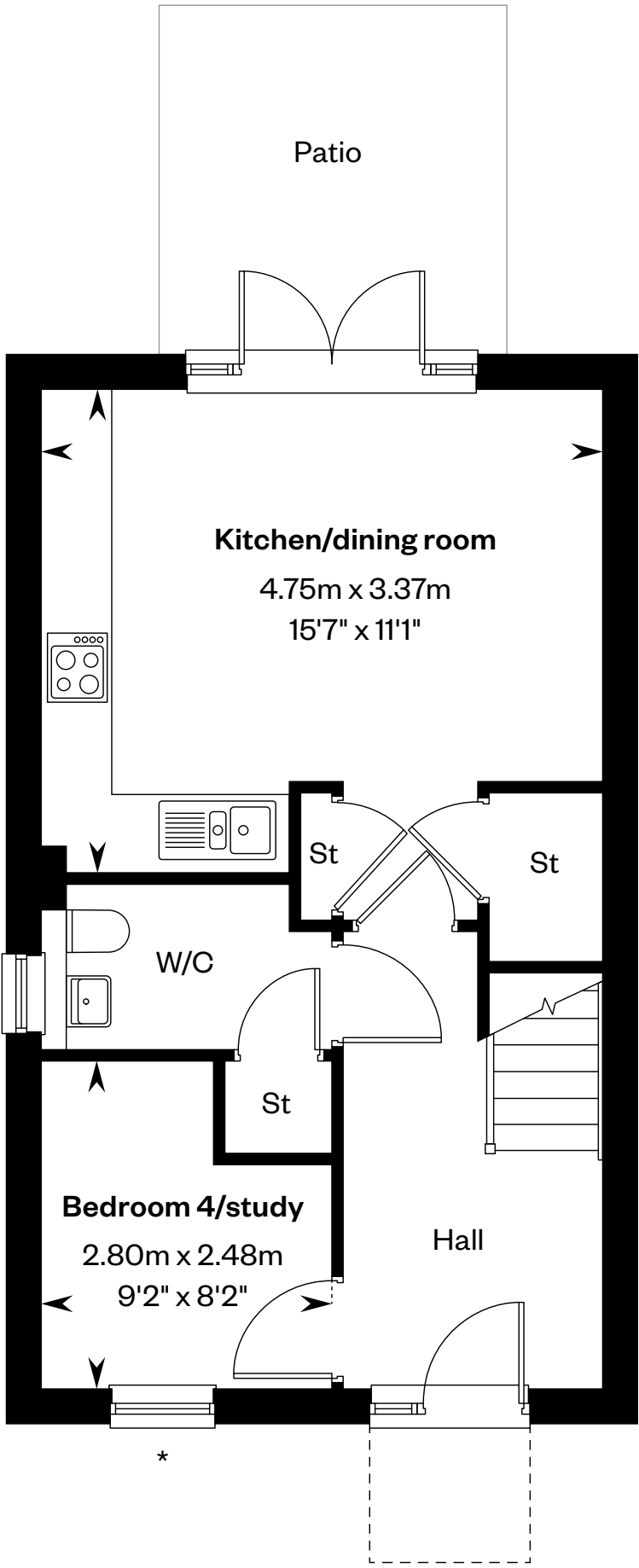
# The Bute

## 4 bedroom terraced home

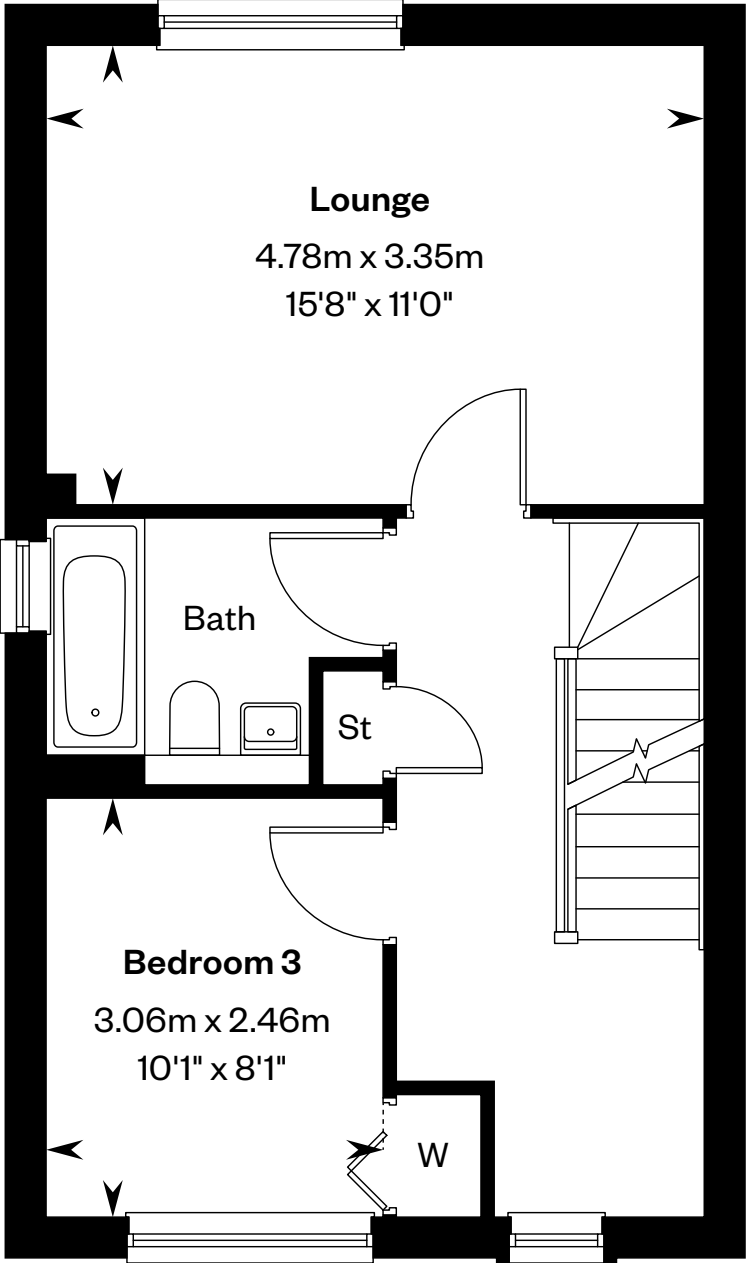
Plots 31, 39, 43, 47, 52 & 56 – handed



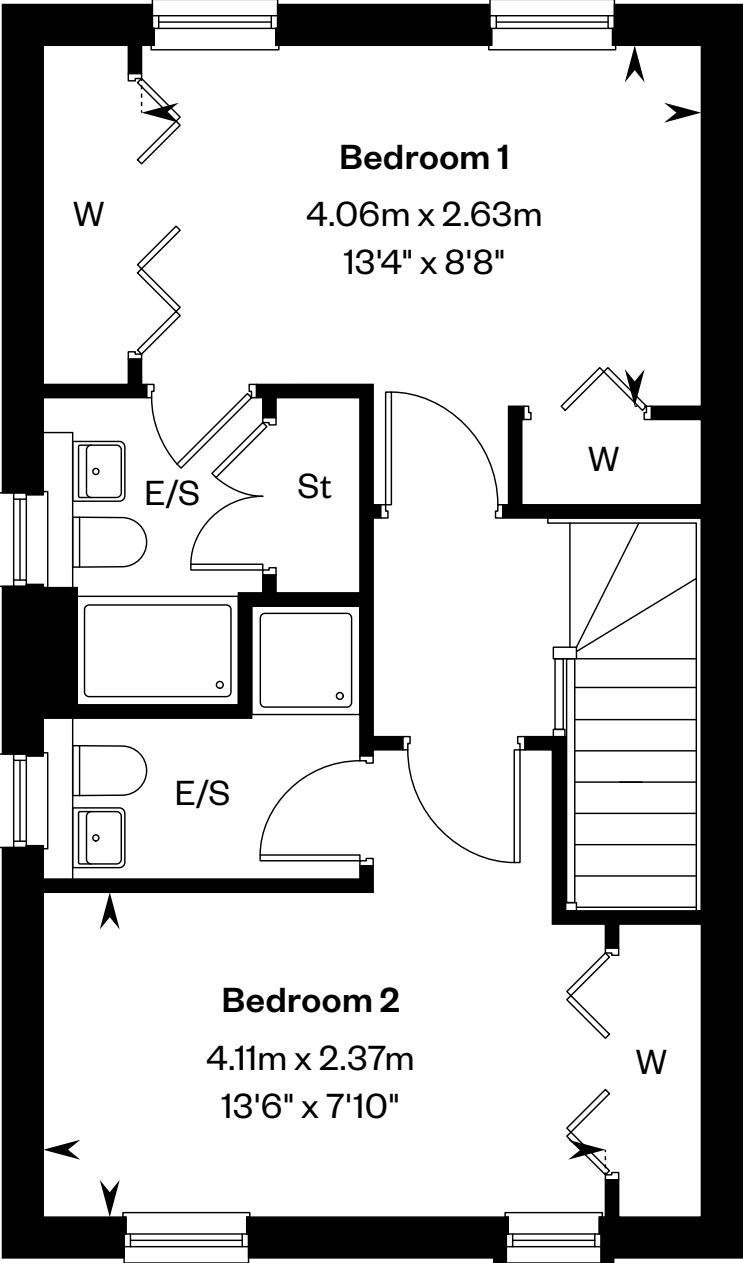
This is a Predicted Energy Assessment for properties that are incomplete. Once the property is completed, this rating will be updated and an official Energy Performance Certificate will be created for the property.



Ground floor



First floor



Second floor

\*Only the end terraced homes will have the windows on the gable. Speak to Sales Consultants for more information. Please ask your Sales Consultant for further details.

E/S: En-Suite. St: Store cupboard. W: Wardrobe.

IMPORTANT NOTICE TO CUSTOMERS: The Consumer Protection from Unfair Trading Regulations 2008. Cala Homes (East) Limited operates a policy of continual product development and the specifications outlined in this brochure are indicative only. The computer generated images and photographs do not necessarily represent the actual finishings/elevation or treatments, landscaping, furnishings and fittings at this development. Information contained is accurate at date of publication on 14.07.2025. See the main brochure for the full Consumer Protection statement.