

The Allan

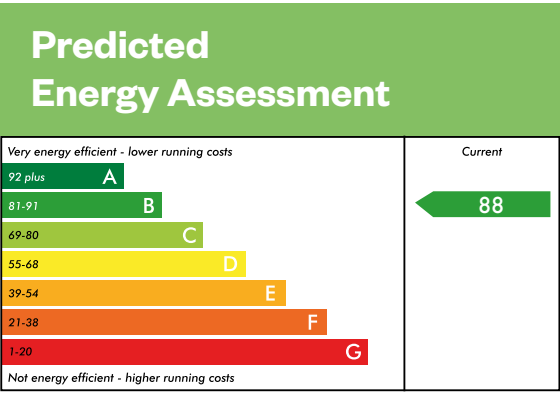
3 bedroom semi-detached or terraced home



The Allan

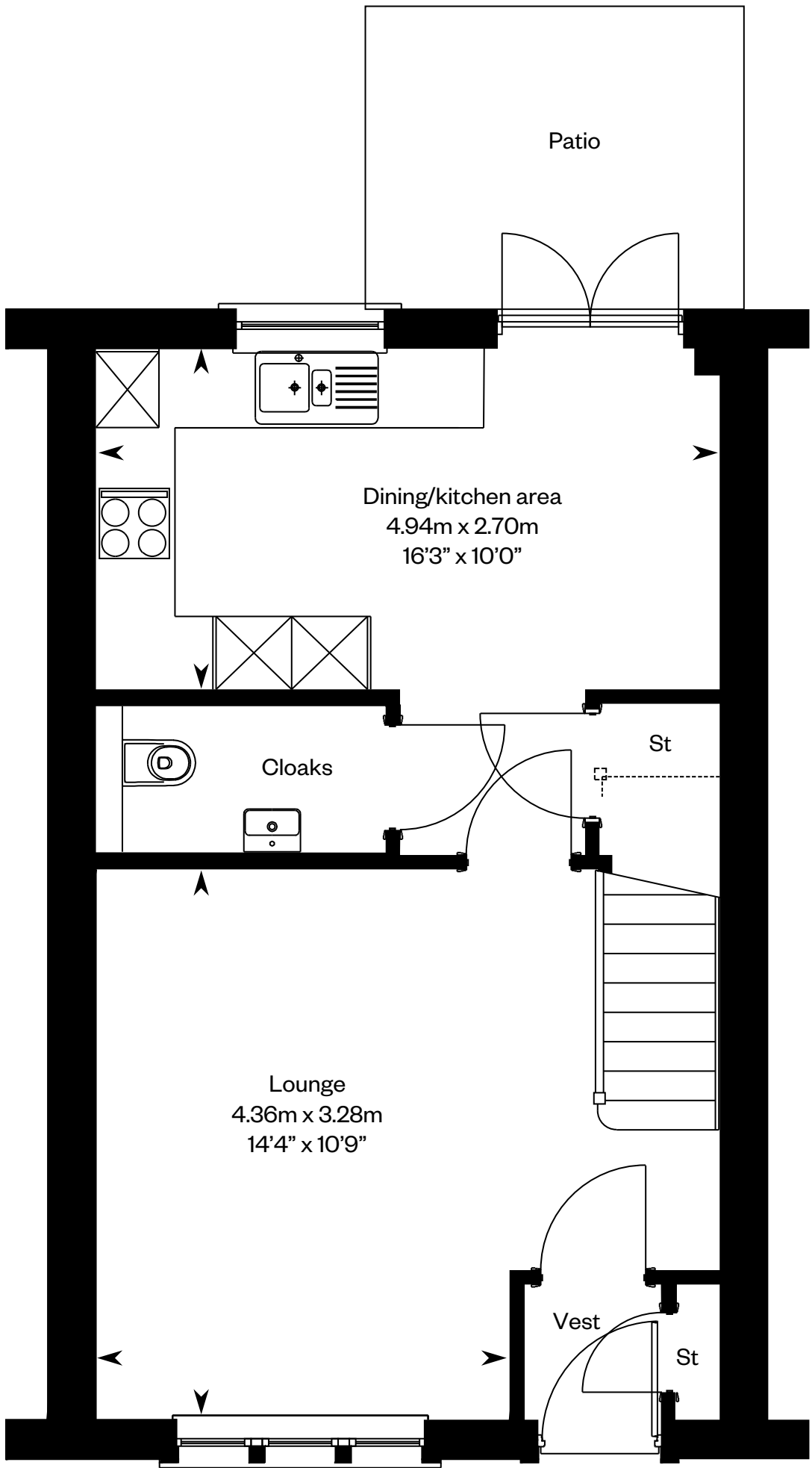
Plots 259, 260, 261 – as shown

Plots 264, 265, 266 – handed

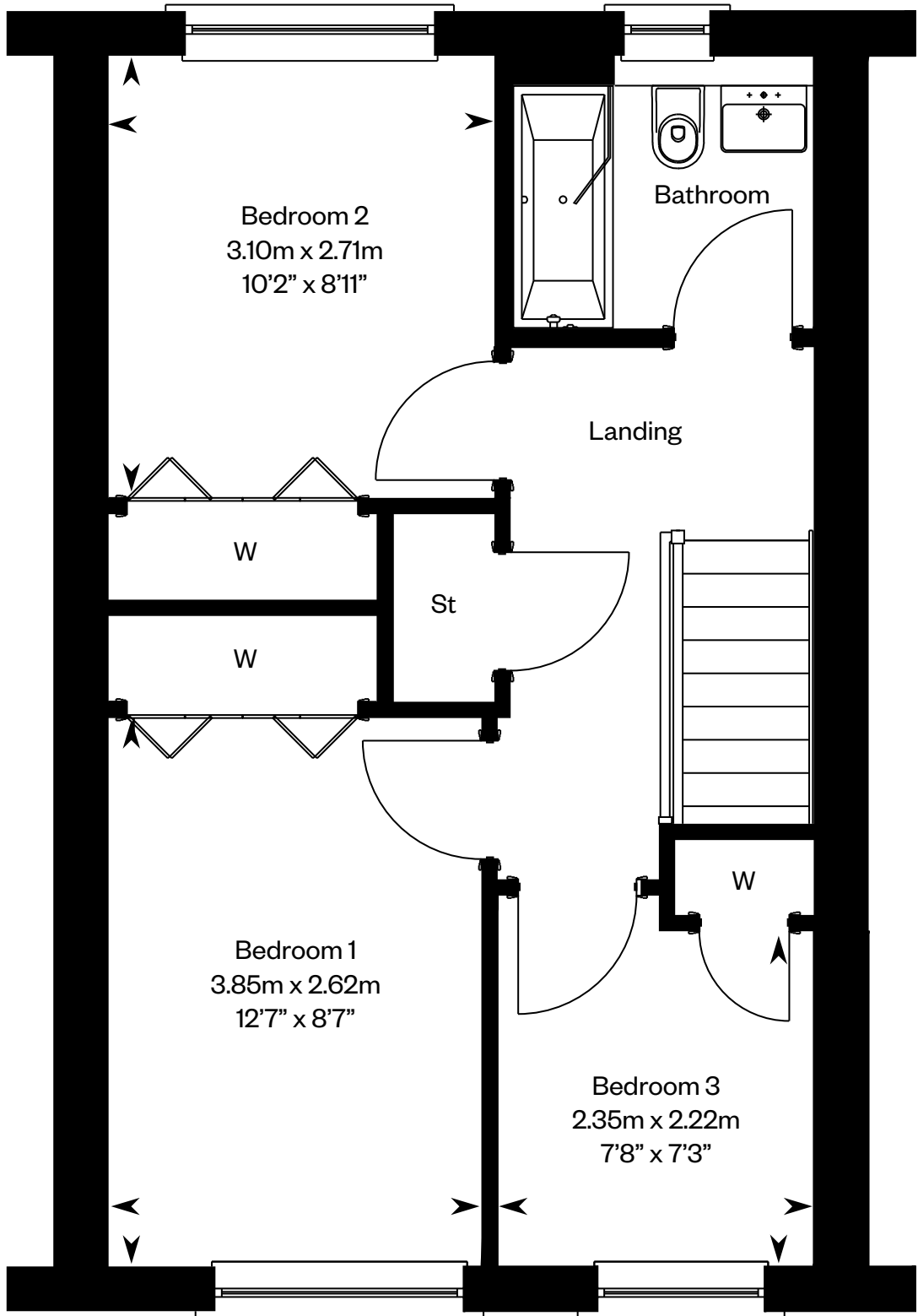


88

This is a Predicted Energy Assessment for properties that are incomplete. Once the property is completed, this rating will be updated and an official Energy Performance Certificate will be created for the property.



Ground floor



First floor

Please ask your Sales Consultant for further details. ST: Store cupboard. W: Wardrobe.

IMPORTANT NOTICE TO CUSTOMERS: The Consumer Protection from Unfair Trading Regulations 2008. Cala Homes (North) Limited operates a policy of continual product development and the specifications outlined in this brochure are indicative only. The computer generated images and photographs do not necessarily represent the actual finishings/elevation or treatments, landscaping, furnishings and fittings at this development. Information contained is accurate at date of publication on 26.09.22 . See the main brochure for the full Consumer Protection statement.

The Arran

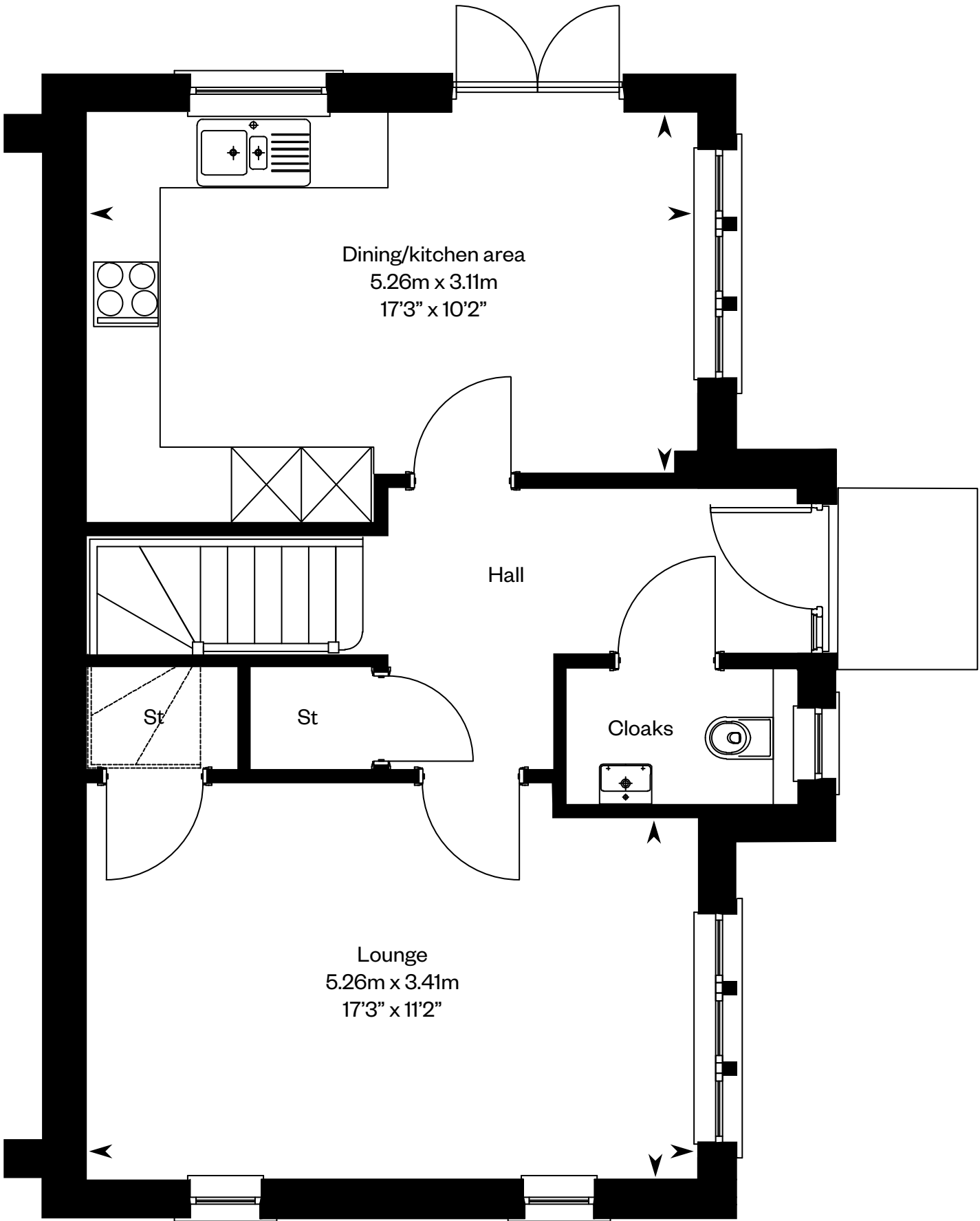
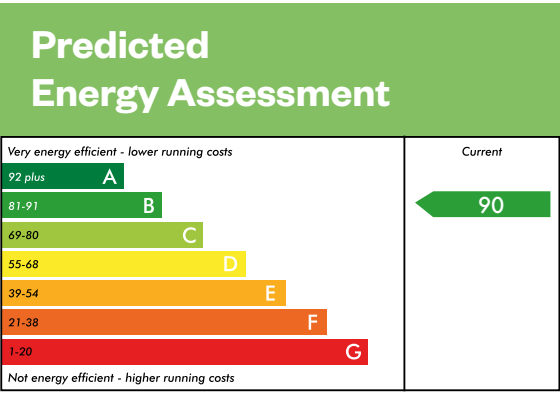
3 bedroom end terraced home



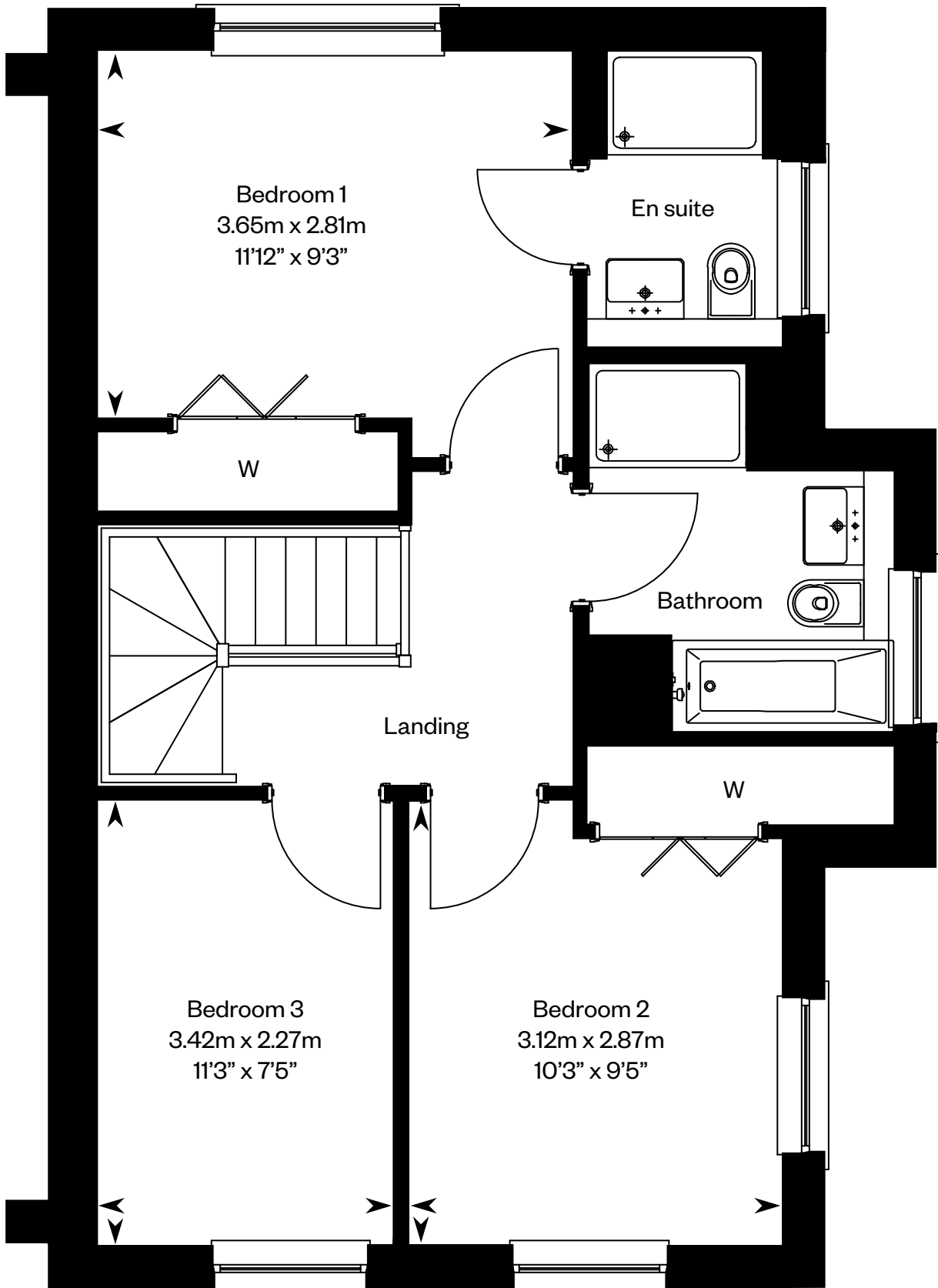
The Arran

Plots 243, 262 – as shown

Plots 267, 250 – handed



Ground floor



First floor

Please ask your Sales Consultant for further details. ST: Store cupboard. W: Wardrobe.

IMPORTANT NOTICE TO CUSTOMERS: The Consumer Protection from Unfair Trading Regulations 2008. Cala Homes (North) Limited operates a policy of continual product development and the specifications outlined in this brochure are indicative only. The computer generated images and photographs do not necessarily represent the actual finishings/elevation or treatments, landscaping, furnishings and fittings at this development. Information contained is accurate at date of publication on 26.09.22 . See the main brochure for the full Consumer Protection statement.

The Avon

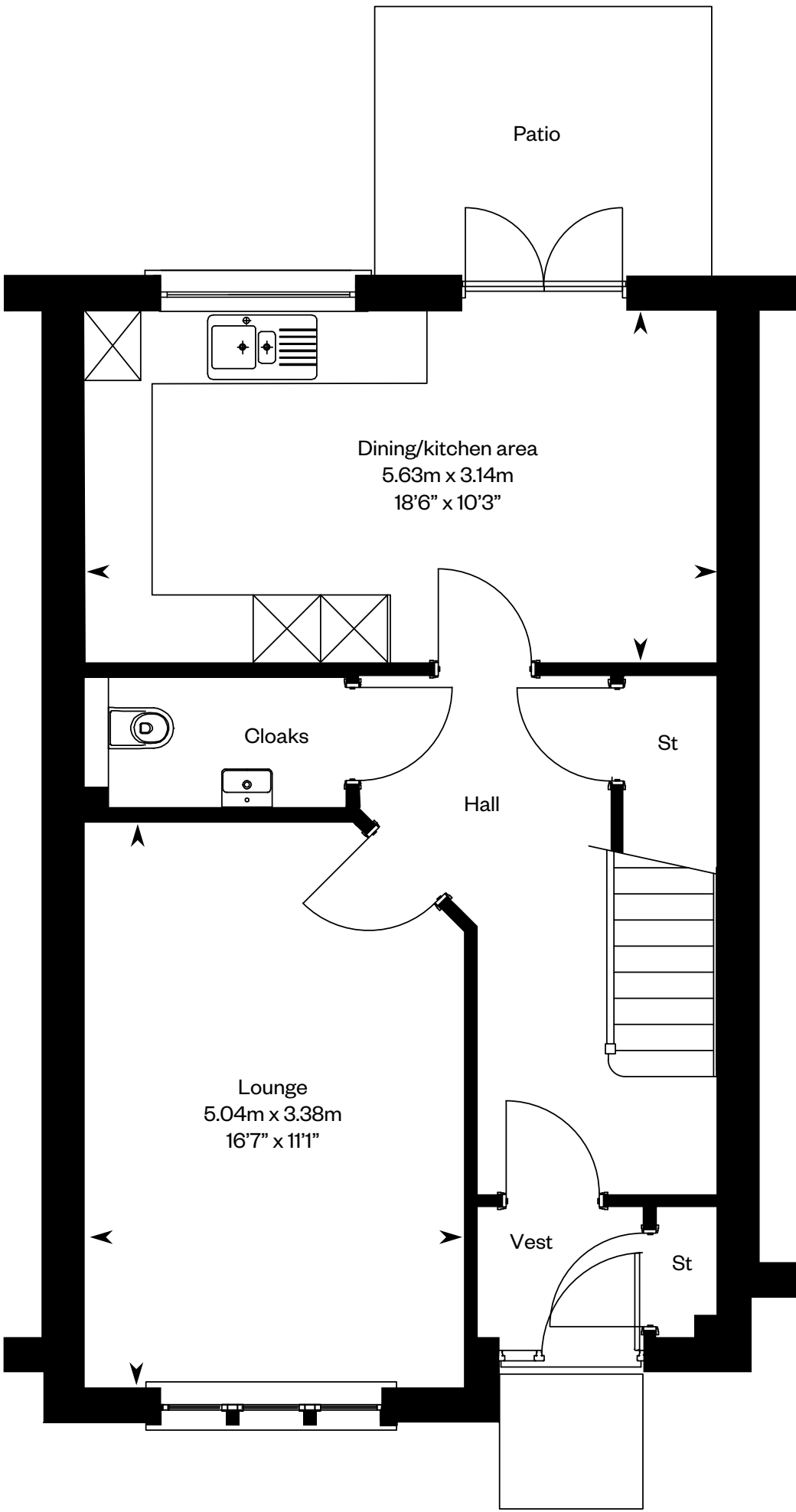
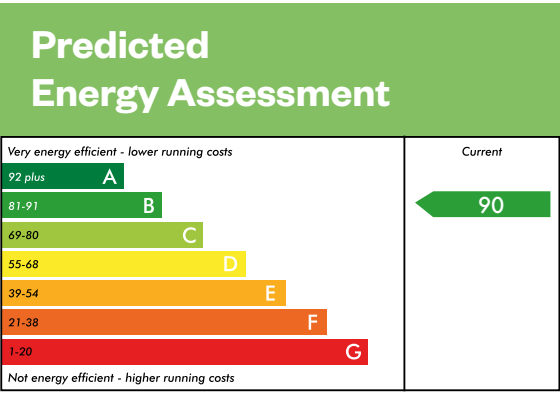
3 bedroom terraced home



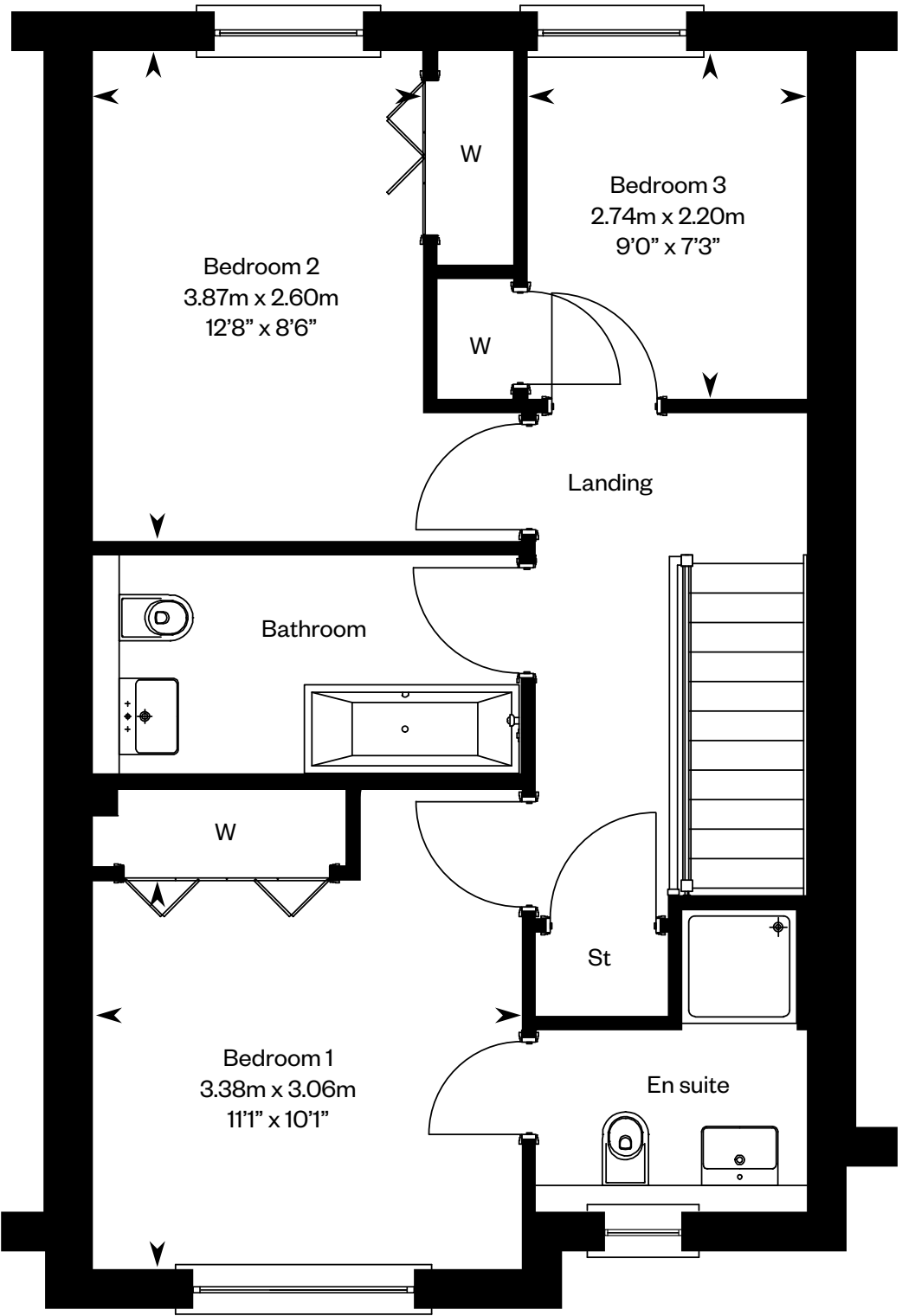
The Avon

Plots 247, 248, 249, 258 – as shown

Plots 244, 245, 246, 263 – handed



Ground floor



First floor

Please ask your Sales Consultant for further details. ST: Store cupboard. W: Wardrobe.

IMPORTANT NOTICE TO CUSTOMERS: The Consumer Protection from Unfair Trading Regulations 2008. Cala Homes (North) Limited operates a policy of continual product development and the specifications outlined in this brochure are indicative only. The computer generated images and photographs do not necessarily represent the actual finishings/elevation or treatments, landscaping, furnishings and fittings at this development. Information contained is accurate at date of publication on 26.09.22 . See the main brochure for the full Consumer Protection statement.

The Bargower

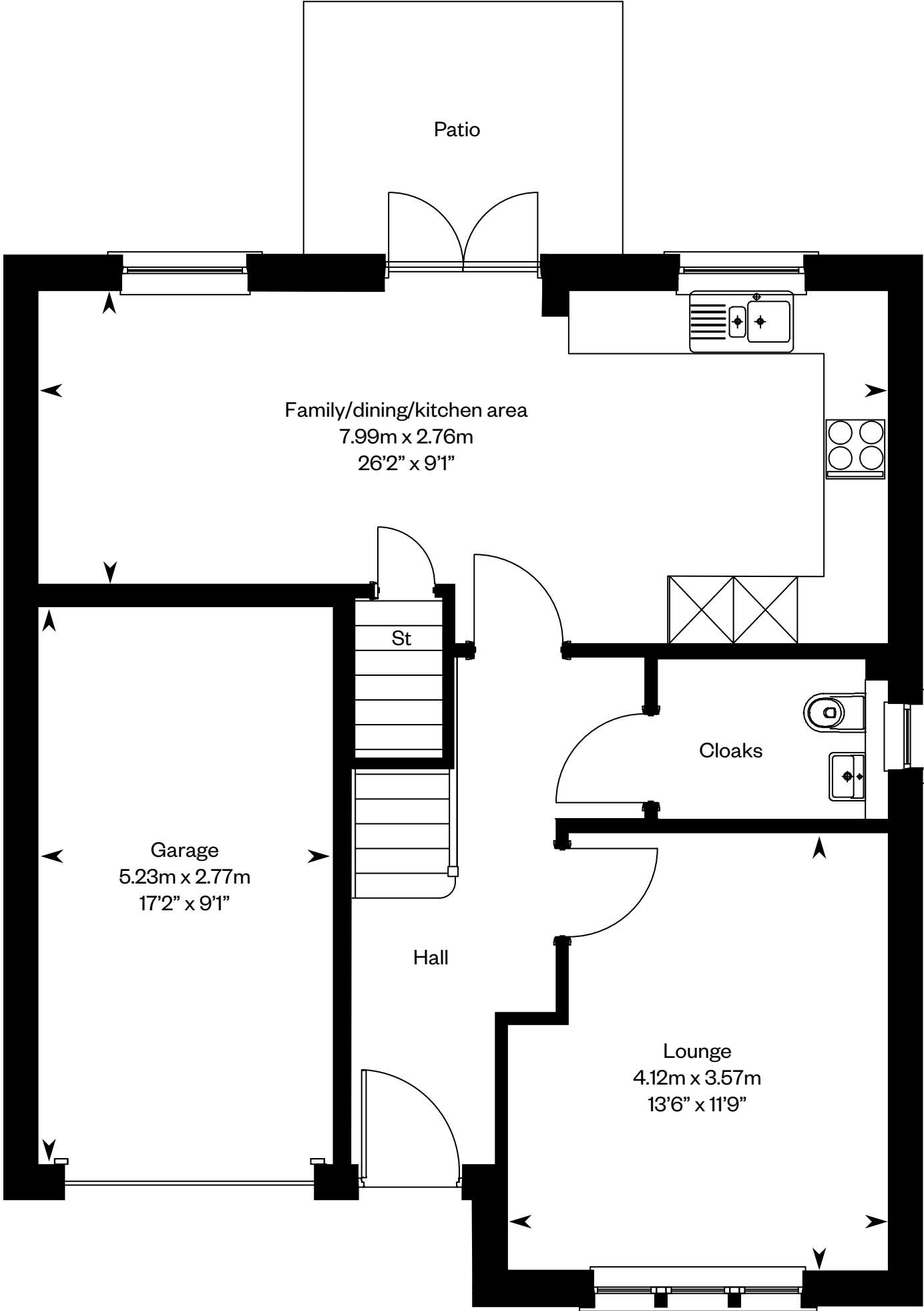
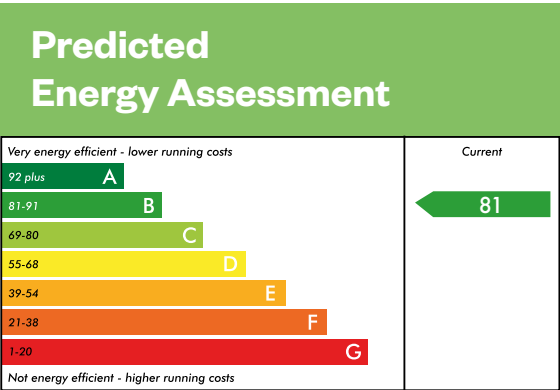
4 bedroom detached home



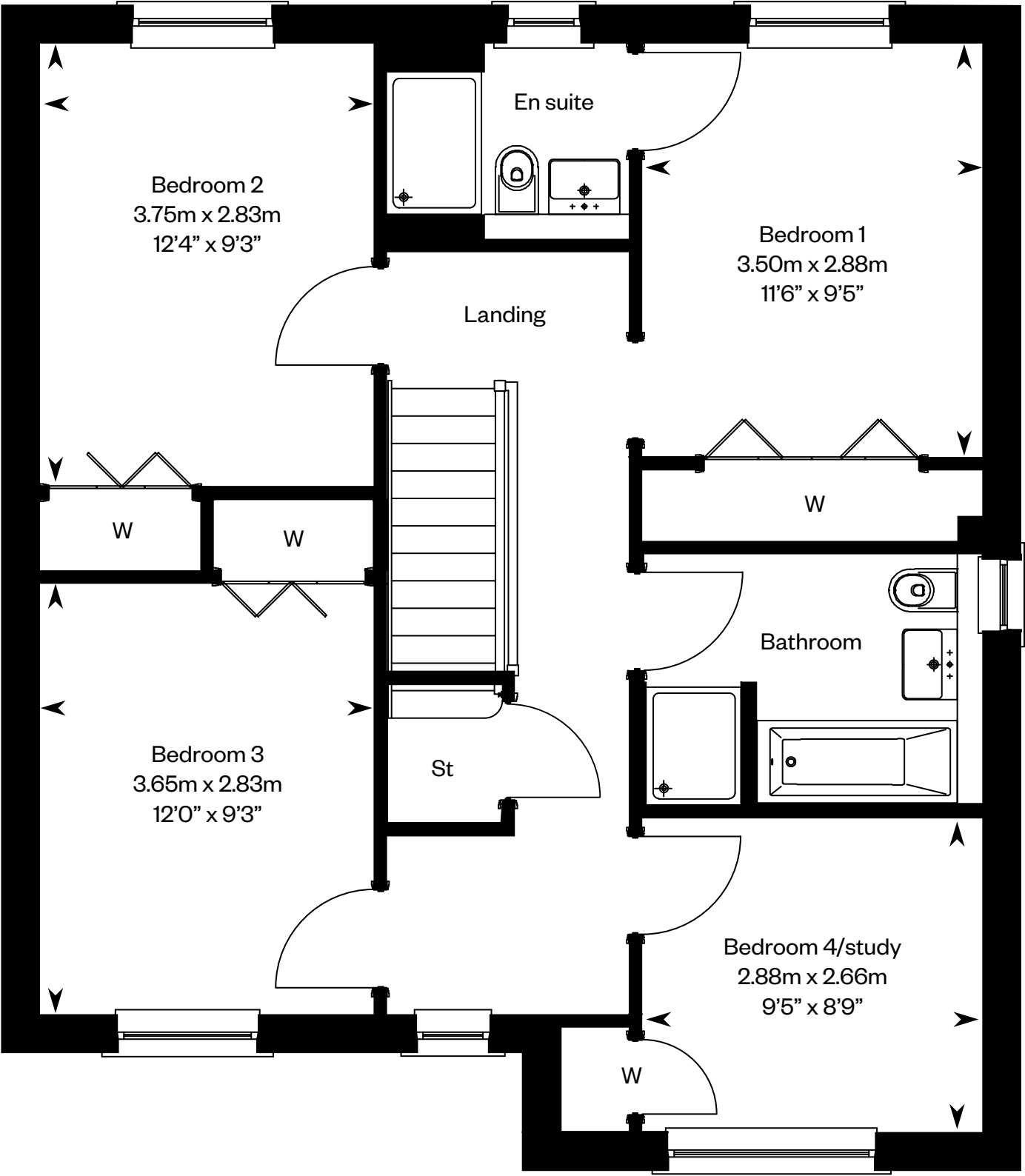
The Bargower

Plot 269 – as shown

Plots 225, 240 – handed



Ground floor



First floor

Please ask your Sales Consultant for further details. ST: Store cupboard. W: Wardrobe.

IMPORTANT NOTICE TO CUSTOMERS: The Consumer Protection from Unfair Trading Regulations 2008. Cala Homes (North) Limited operates a policy of continual product development and the specifications outlined in this brochure are indicative only. The computer generated images and photographs do not necessarily represent the actual finishings/elevation or treatments, landscaping, furnishings and fittings at this development. Information contained is accurate at date of publication on 26.09.22 . See the main brochure for the full Consumer Protection statement.

The Barrie

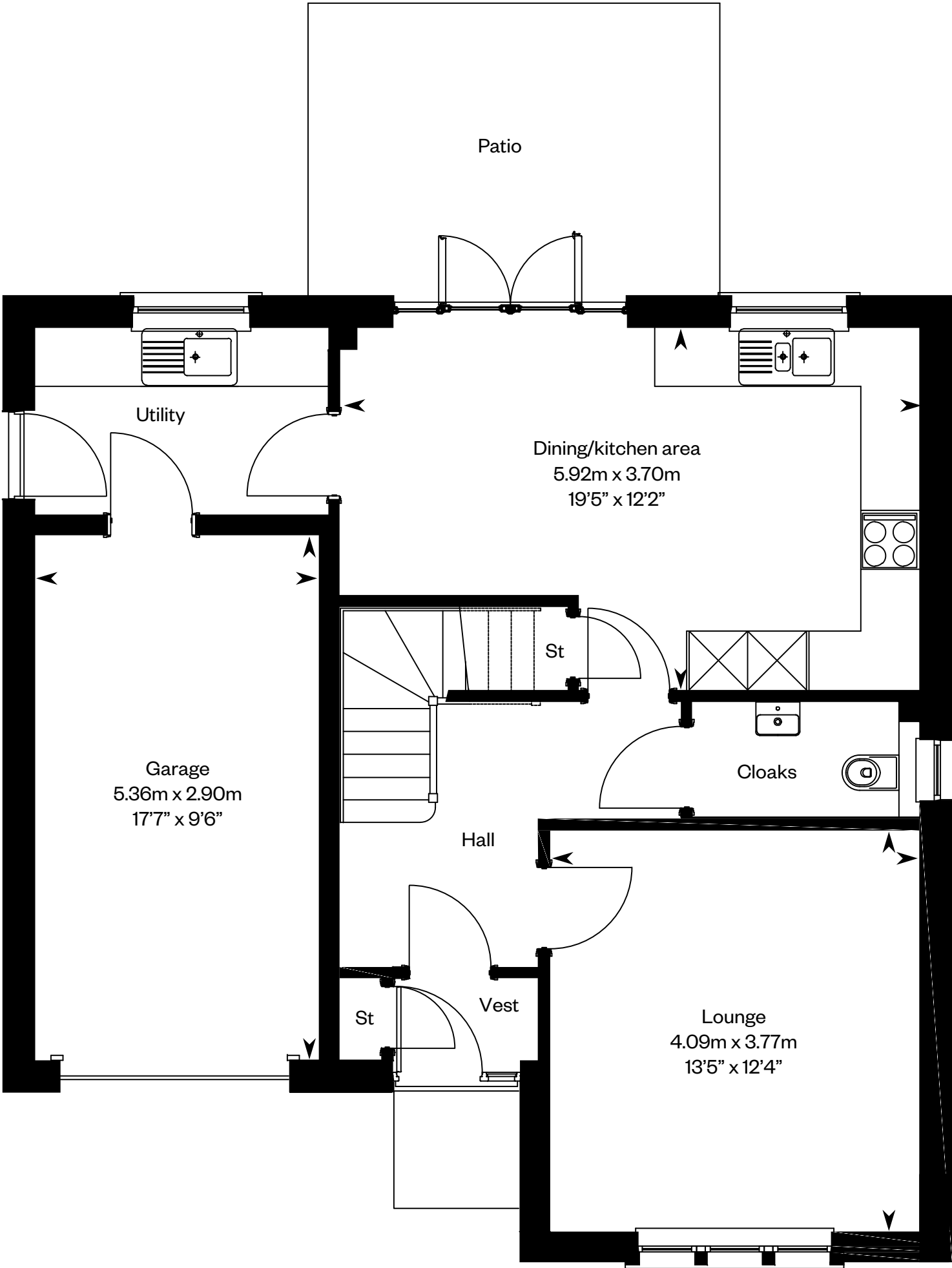
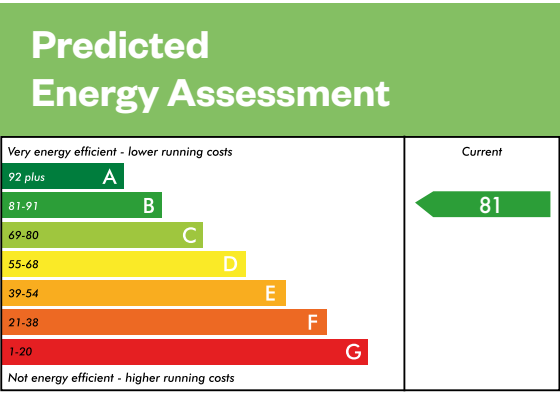
4 bedroom detached home



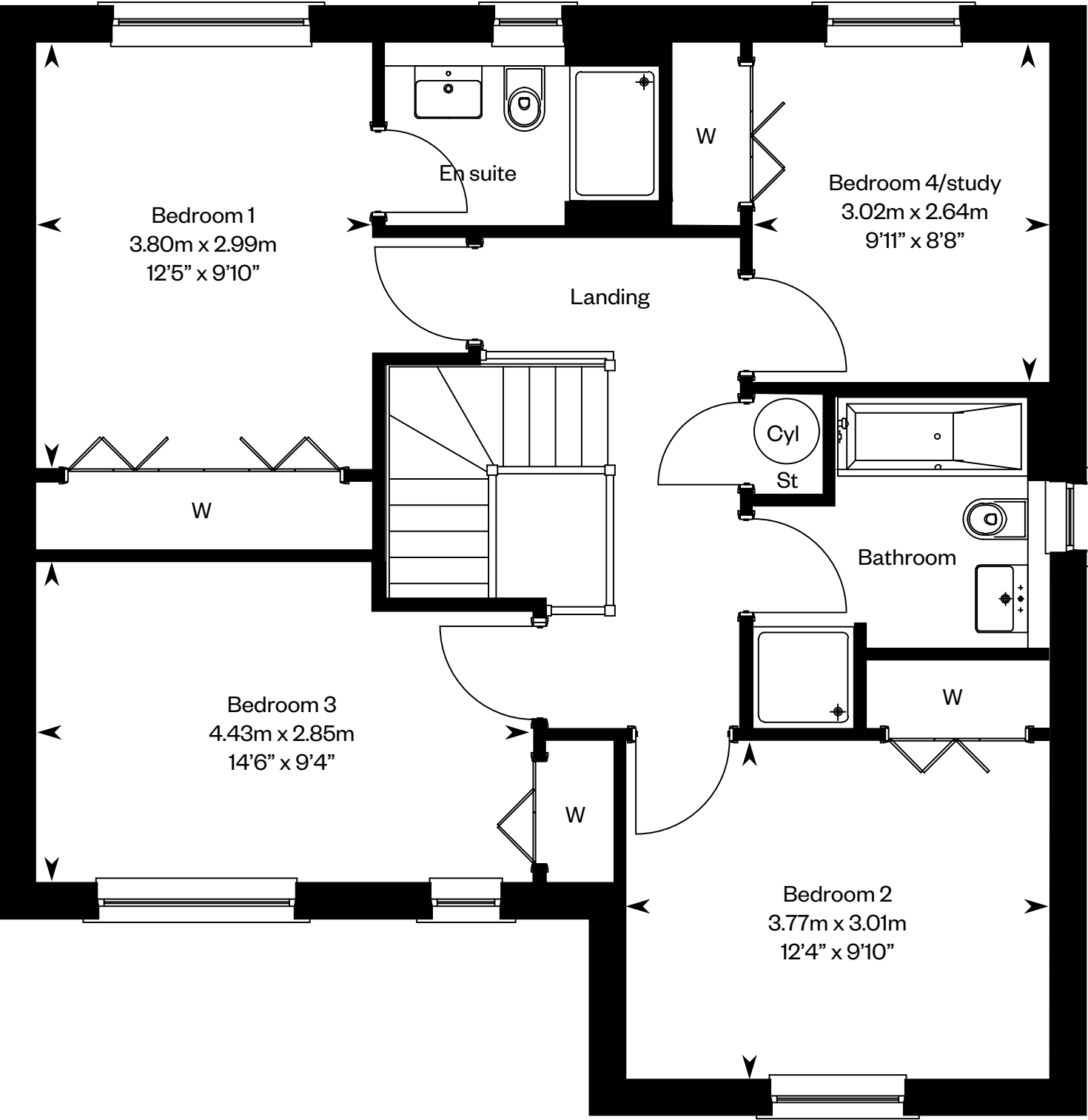
The Barrie

Plot 268 – as shown

Plot 241 – handed



Ground floor



First floor

Please ask your Sales Consultant for further details. ST: Store cupboard. W: Wardrobe.

IMPORTANT NOTICE TO CUSTOMERS: The Consumer Protection from Unfair Trading Regulations 2008. Cala Homes (North) Limited operates a policy of continual product development and the specifications outlined in this brochure are indicative only. The computer generated images and photographs do not necessarily represent the actual finishings/elevation or treatments, landscaping, furnishings and fittings at this development. Information contained is accurate at date of publication on 26.09.22 . See the main brochure for the full Consumer Protection statement.

The Bryce

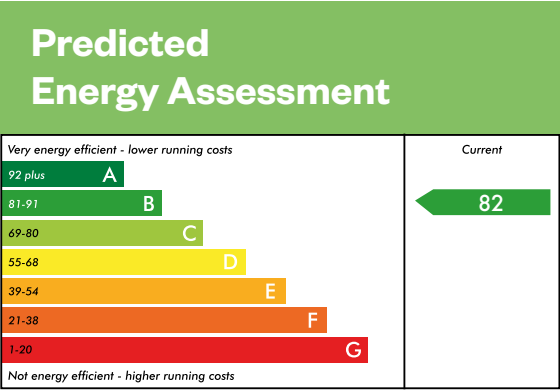
4 bedroom detached home



The Bryce

Plots 216, 228, 252, 255 – as shown

Plots 204, 220, 238, 242 – handed



The Cleland

4 bedroom detached home



Computer Generated Image - A typical Cleland

The Cleland

Plot 229 – as shown

Plot 236 – handed

Very energy efficient - lower running costs

Current

92 plus

A

81-91

B

69-80

C

55-68

D

39-54

E

21-38

F

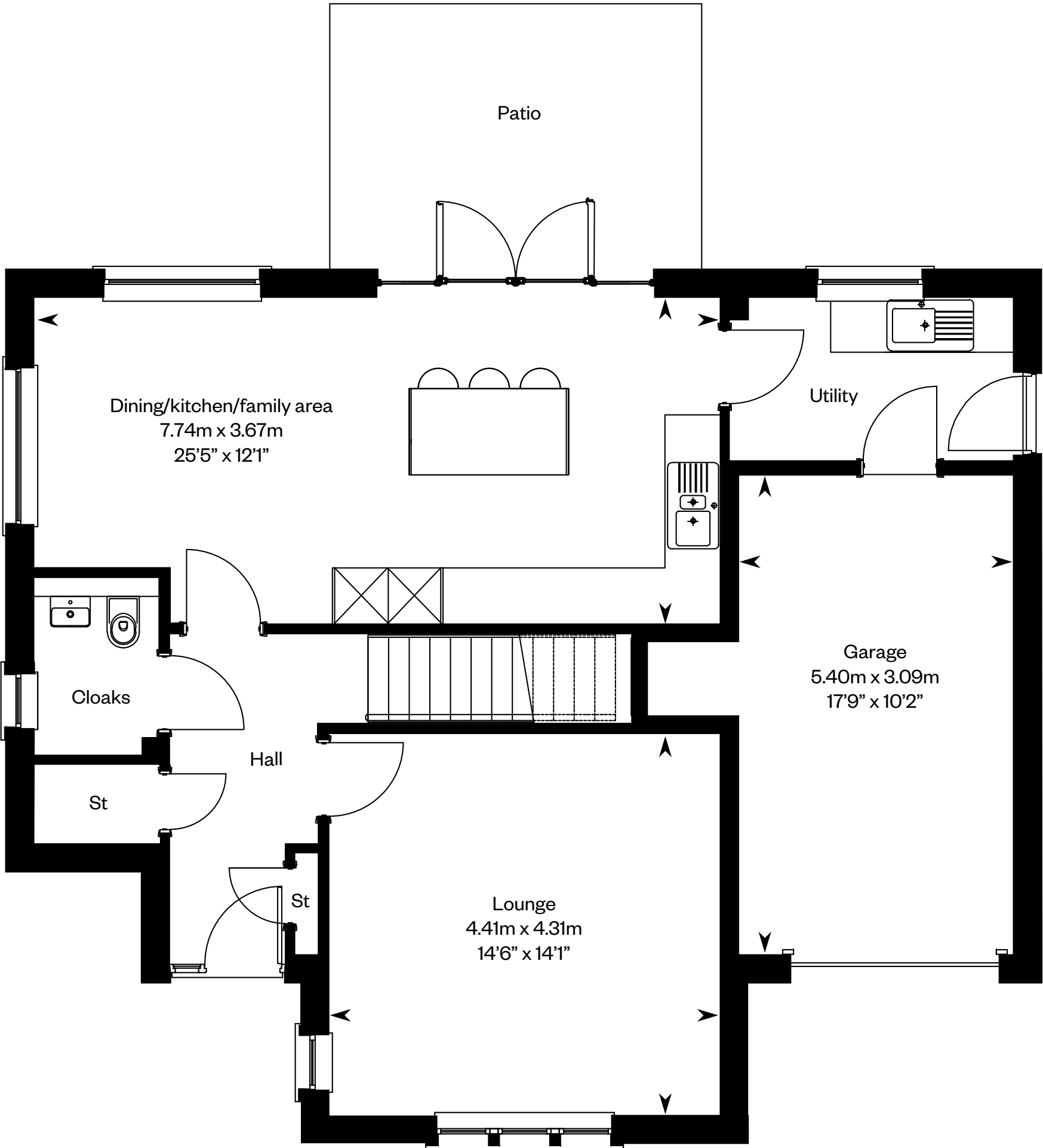
1-20

G

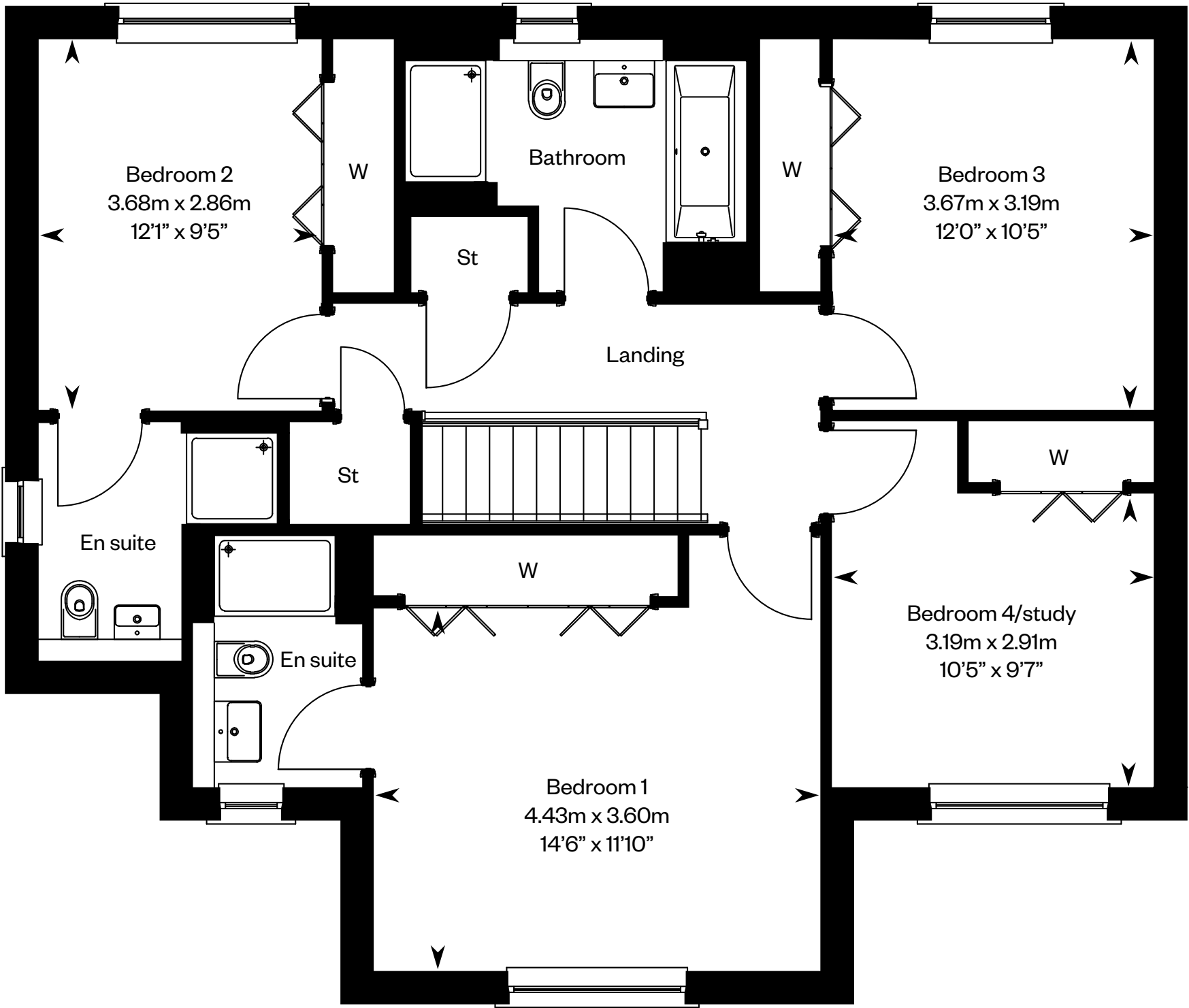
Not energy efficient - higher running costs

81

This is a Predicted Energy Assessment for properties that are incomplete. Once the property is completed, this rating will be updated and an official Energy Performance Certificate will be created for the property.



Ground floor



First floor

Please ask your Sales Consultant for further details. ST: Store cupboard. W: Wardrobe.

IMPORTANT NOTICE TO CUSTOMERS: The Consumer Protection from Unfair Trading Regulations 2008. Cala Homes (North) Limited operates a policy of continual product development and the specifications outlined in this brochure are indicative only. The computer generated images and photographs do not necessarily represent the actual finishings/elevation or treatments, landscaping, furnishings and fittings at this development. Information contained is accurate at date of publication on 26.09.22 . See the main brochure for the full Consumer Protection statement.

The Crichton

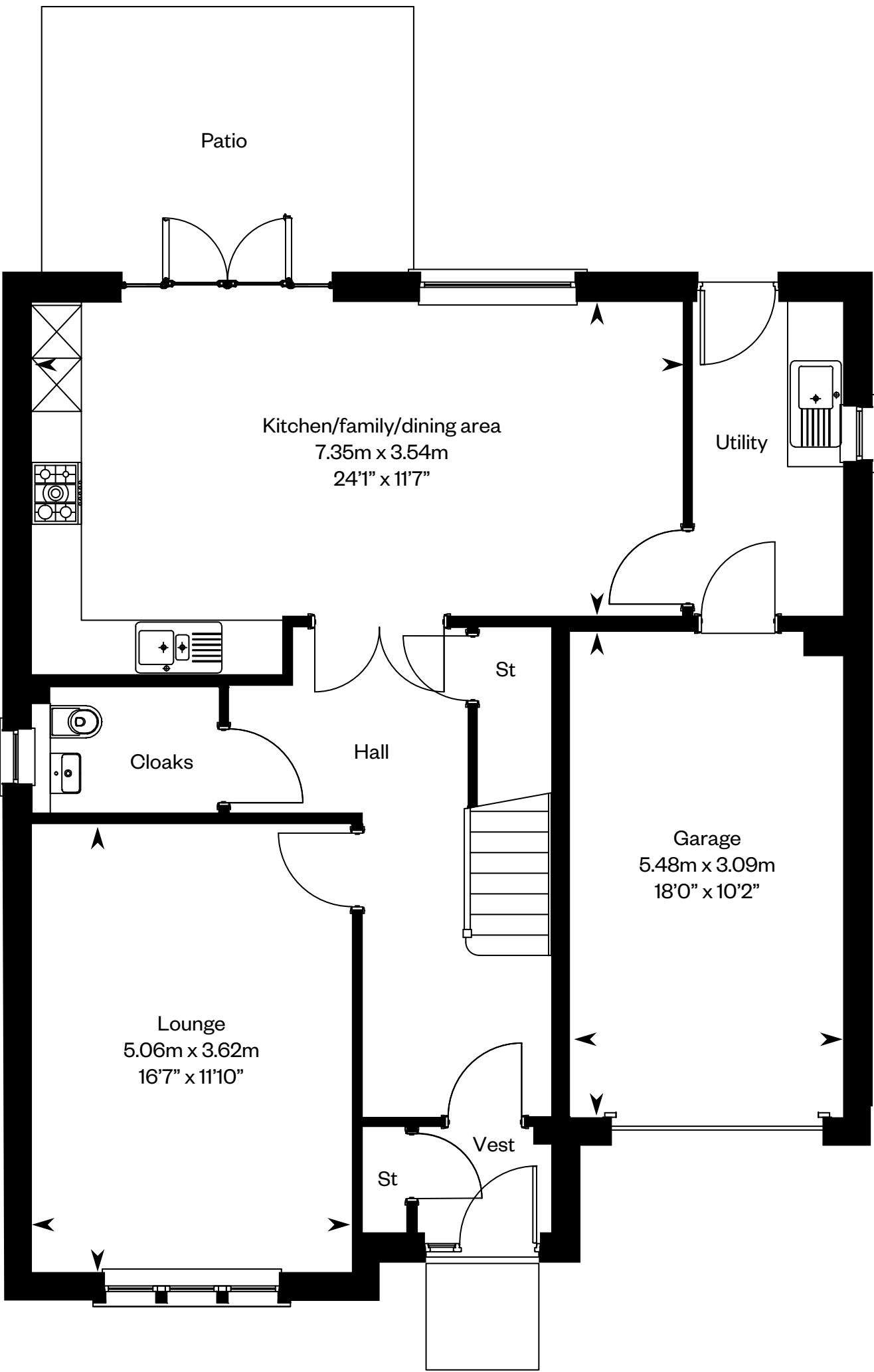
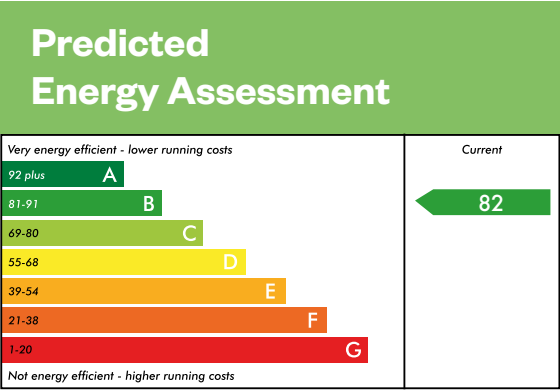
5 bedroom detached home



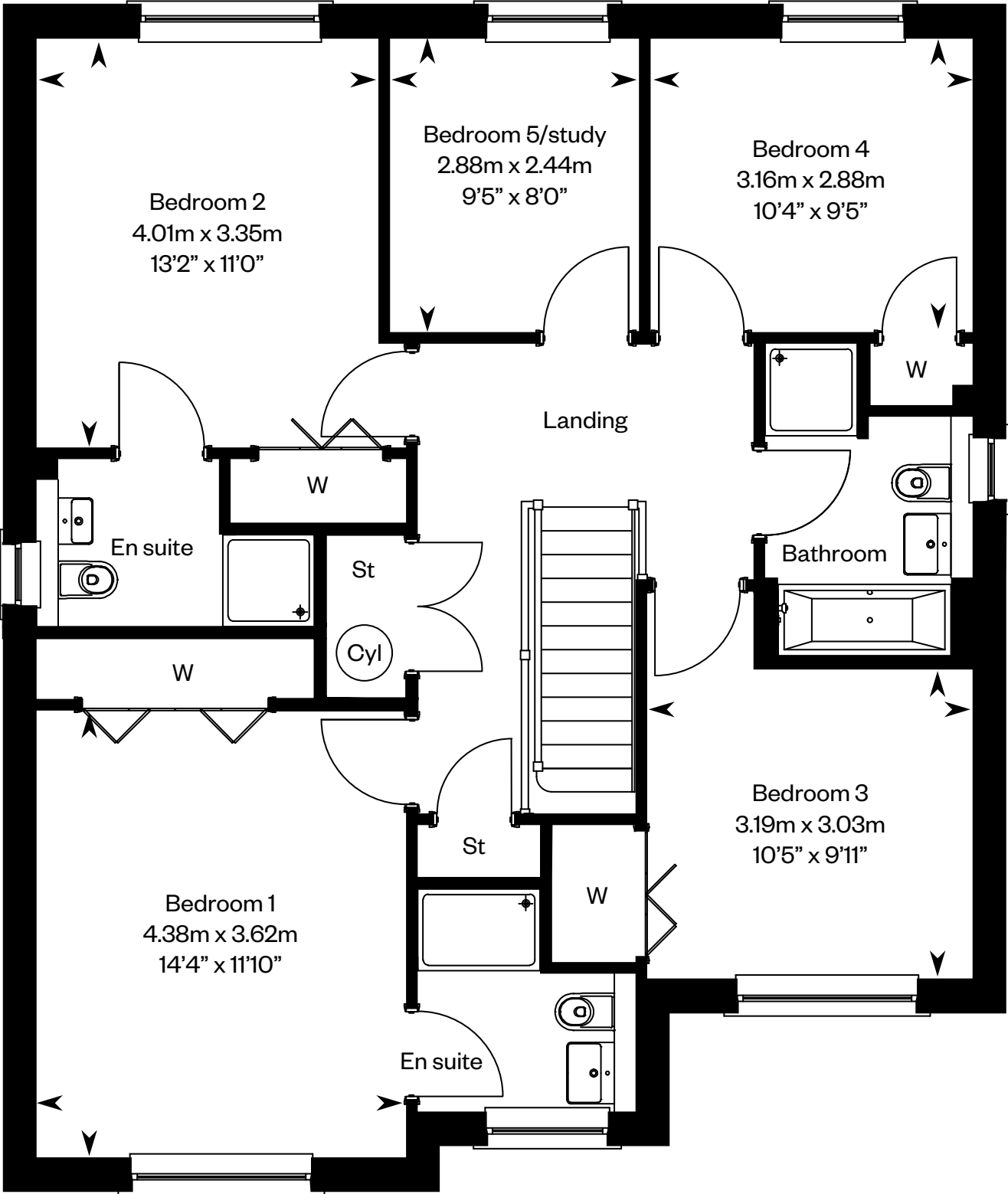
The Crichton

Plots 219, 232, 257 – as shown

Plots 202, 210, 214, 227, 237, 254, 270, 273 – handed



Ground floor



First floor

Please ask your Sales Consultant for further details. ST: Store cupboard. W: Wardrobe.

IMPORTANT NOTICE TO CUSTOMERS: The Consumer Protection from Unfair Trading Regulations 2008. Cala Homes (North) Limited operates a policy of continual product development and the specifications outlined in this brochure are indicative only. The computer generated images and photographs do not necessarily represent the actual finishings/elevation or treatments, landscaping, furnishings and fittings at this development. Information contained is accurate at date of publication on 26.09.22 . See the main brochure for the full Consumer Protection statement.

The Darroch

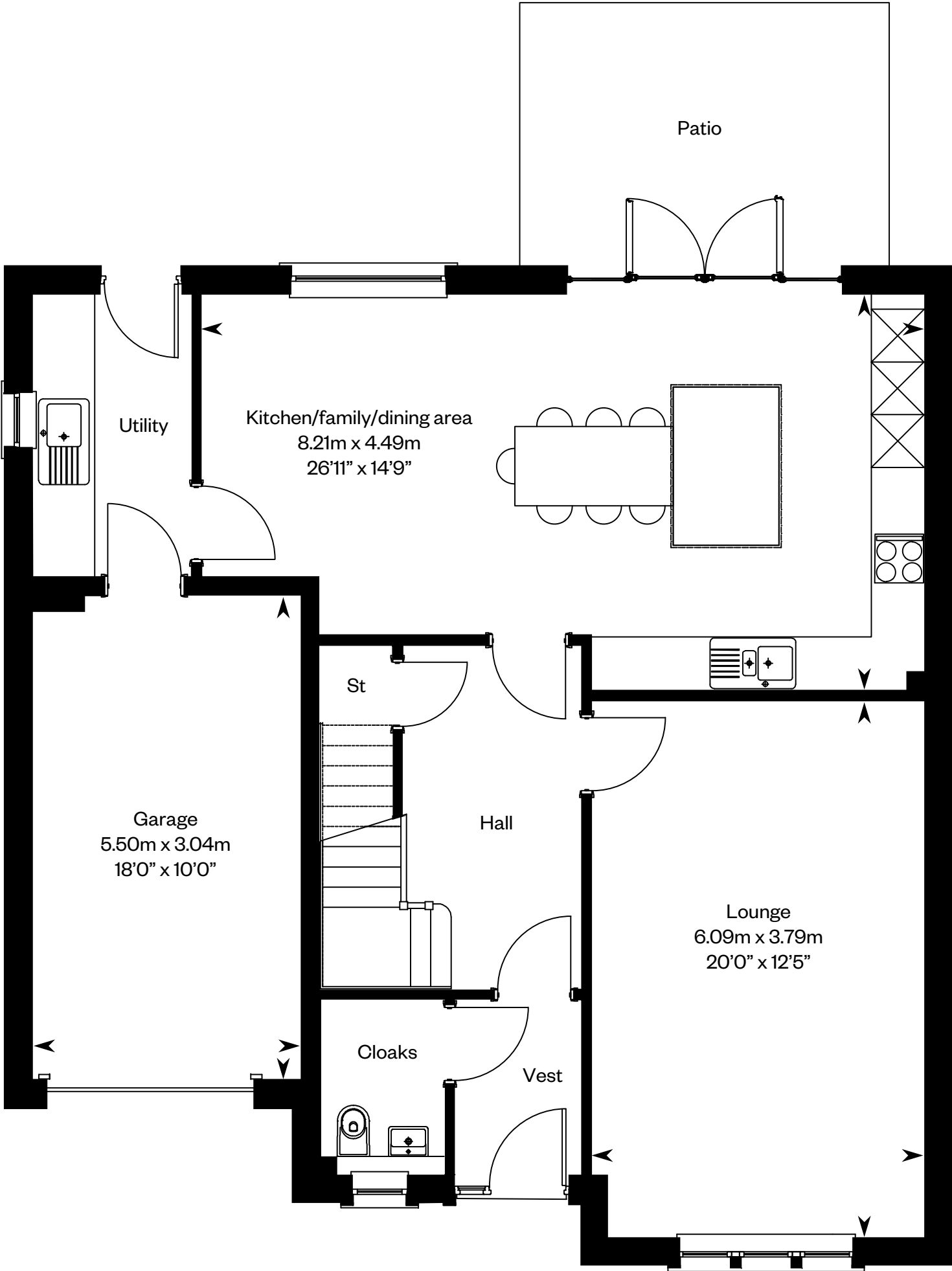
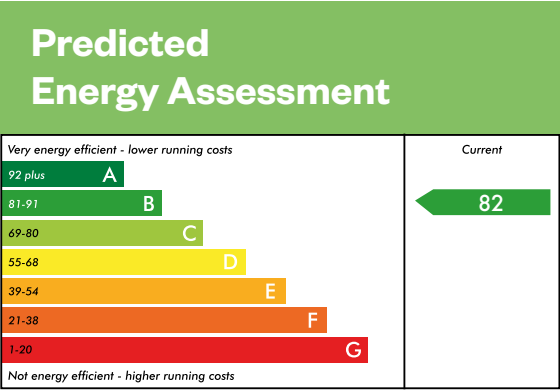
5 bedroom detached home



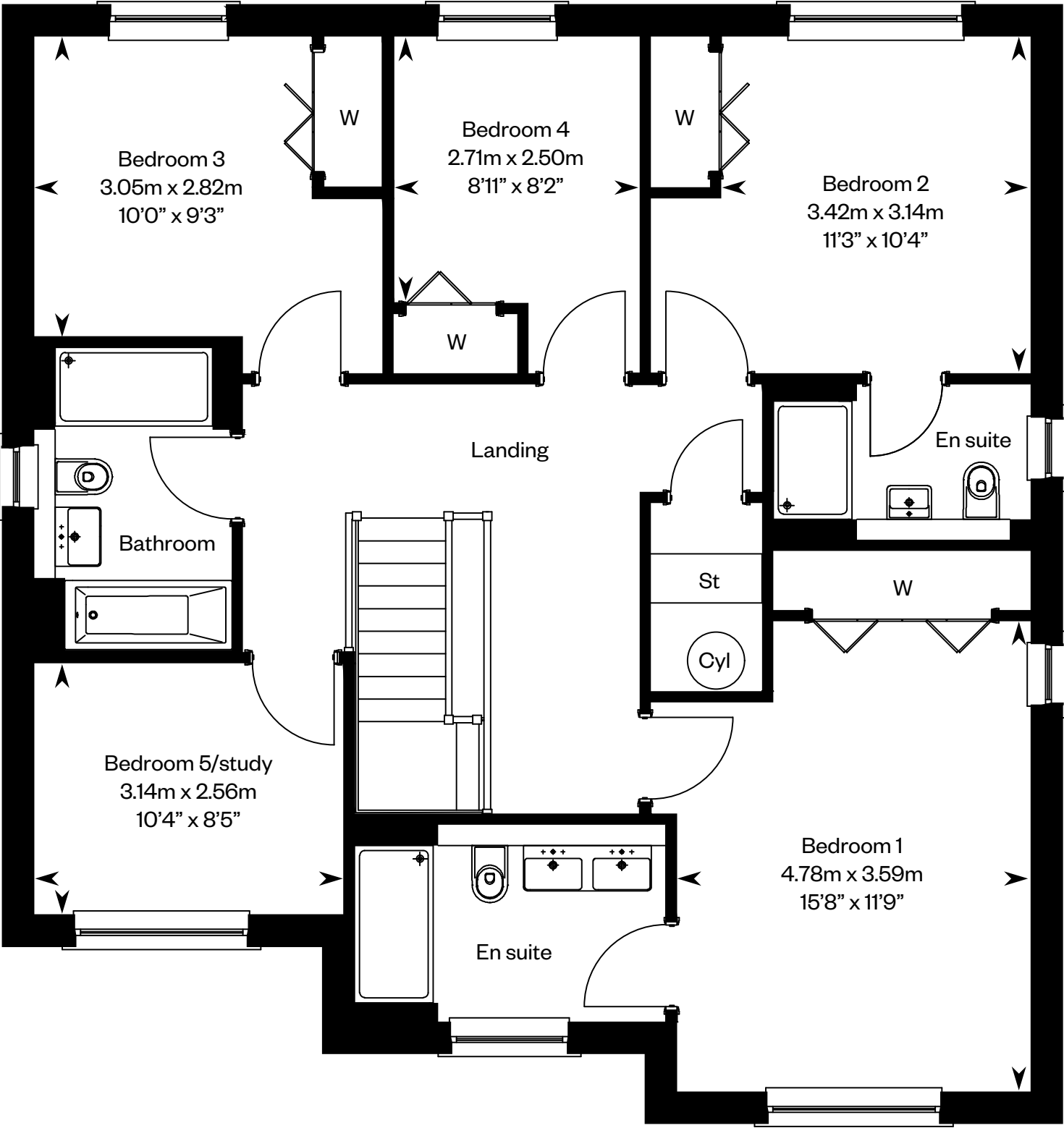
The Darroch

Plots 203, 206, 213, 215, 253, 256, 271 – as shown

Plots 231, 239 – handed



Ground floor



First floor

Please ask your Sales Consultant for further details. ST: Store cupboard. W: Wardrobe.

IMPORTANT NOTICE TO CUSTOMERS: The Consumer Protection from Unfair Trading Regulations 2008. Cala Homes (North) Limited operates a policy of continual product development and the specifications outlined in this brochure are indicative only. The computer generated images and photographs do not necessarily represent the actual finishings/elevation or treatments, landscaping, furnishings and fittings at this development. Information contained is accurate at date of publication on 26.09.22 . See the main brochure for the full Consumer Protection statement.

The Garvie

5 bedroom detached home

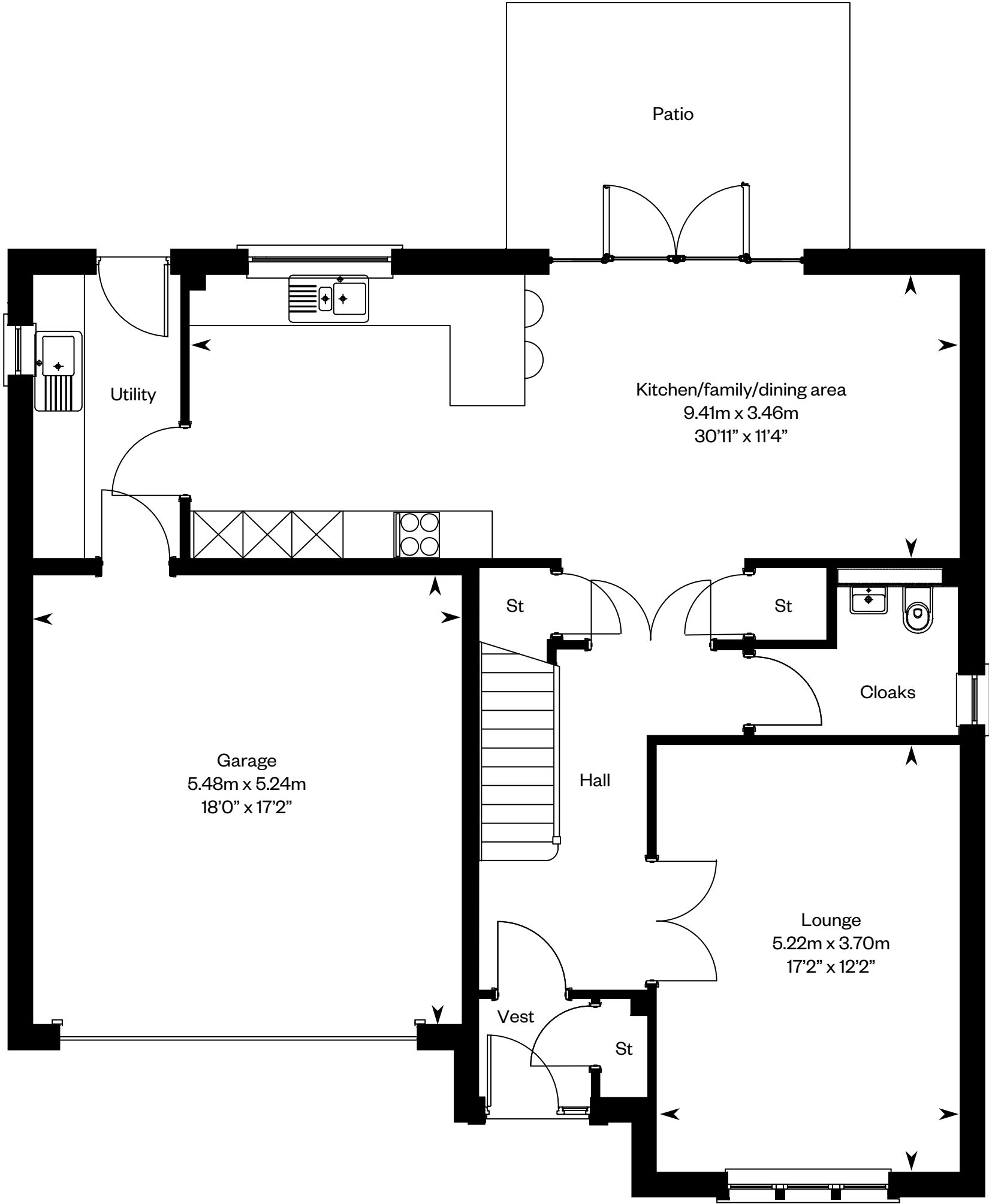
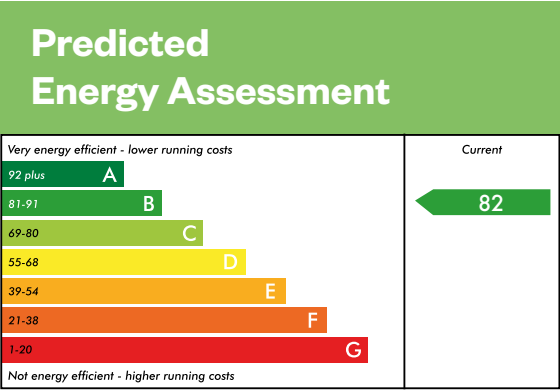


Computer Generated Image - A typical Garvie

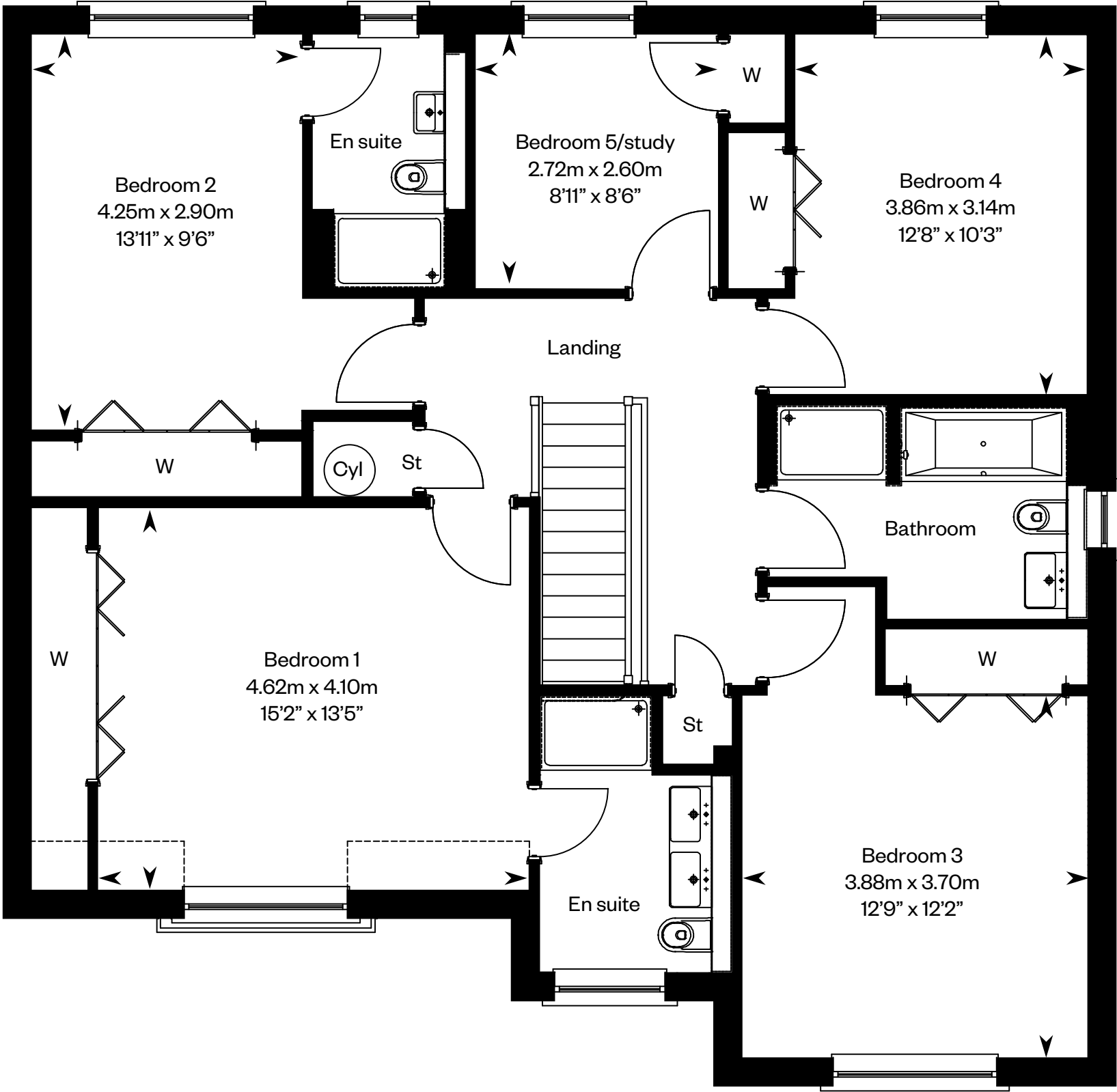
The Garvie

Plots 209, 221, 223, 224, 234 – as shown

Plots 211, 274, 278 – handed



Ground floor



First floor

Please ask your Sales Consultant for further details. ST: Store cupboard. W: Wardrobe.

IMPORTANT NOTICE TO CUSTOMERS: The Consumer Protection from Unfair Trading Regulations 2008. Cala Homes (North) Limited operates a policy of continual product development and the specifications outlined in this brochure are indicative only. The computer generated images and photographs do not necessarily represent the actual finishings/elevation or treatments, landscaping, furnishings and fittings at this development. Information contained is accurate at date of publication on 26.09.22 . See the main brochure for the full Consumer Protection statement.

The Guthrie

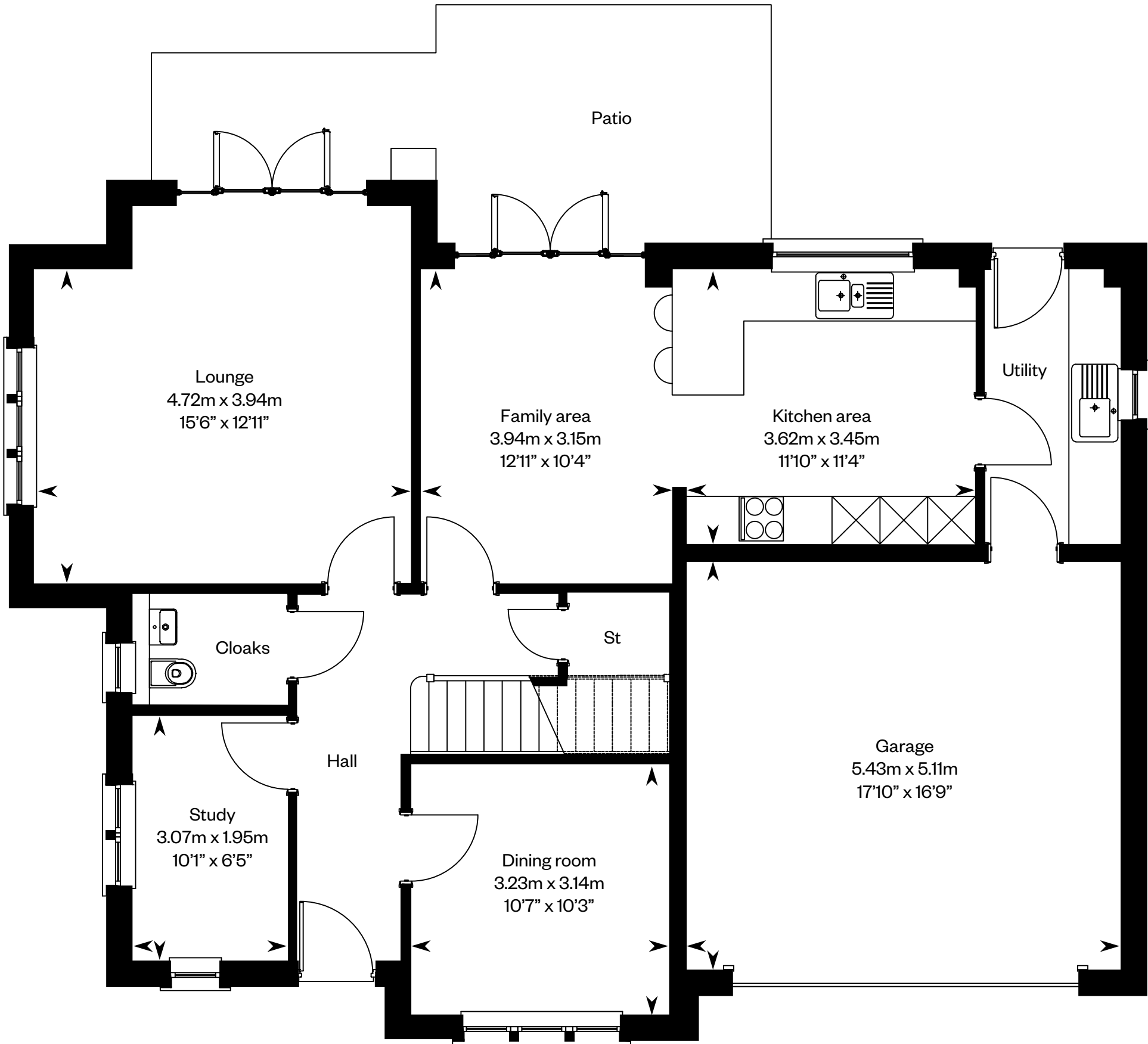
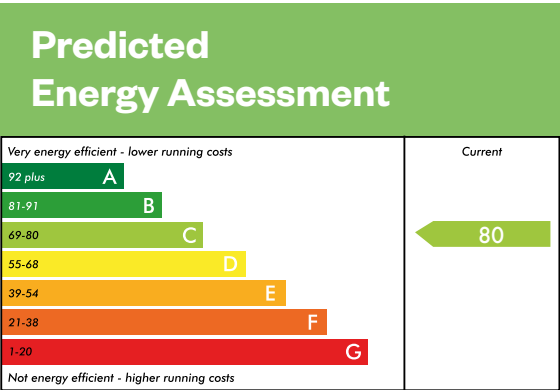
4 bedroom detached home



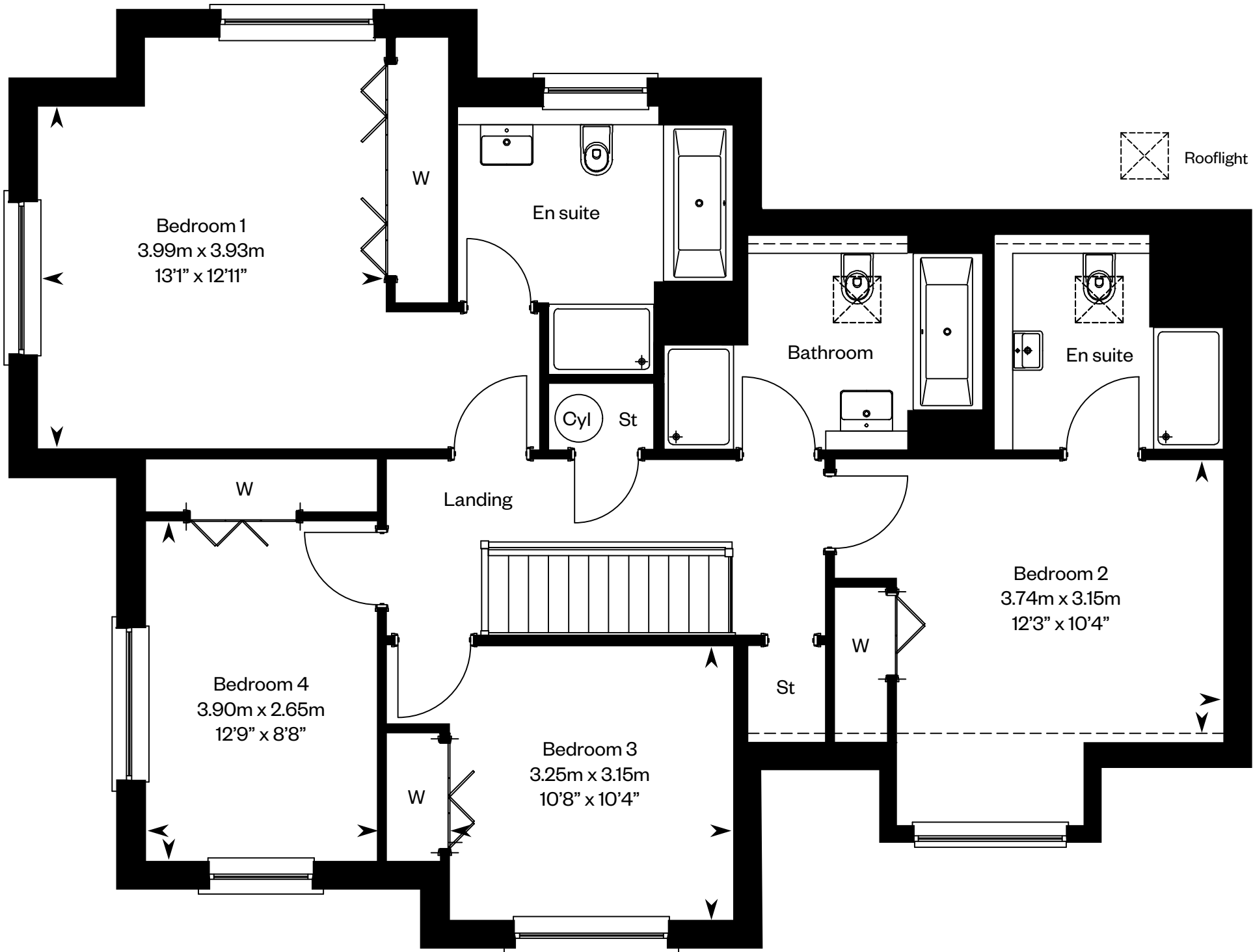
The Guthrie

Plot 201 – as shown

Plot 235 – handed



Ground floor



First floor

Please ask your Sales Consultant for further details. ST: Store cupboard. W: Wardrobe.

IMPORTANT NOTICE TO CUSTOMERS: The Consumer Protection from Unfair Trading Regulations 2008. Cala Homes (North) Limited operates a policy of continual product development and the specifications outlined in this brochure are indicative only. The computer generated images and photographs do not necessarily represent the actual finishings/elevation or treatments, landscaping, furnishings and fittings at this development. Information contained is accurate at date of publication on 26.09.22 . See the main brochure for the full Consumer Protection statement.

The Kennedy

5 bedroom detached home

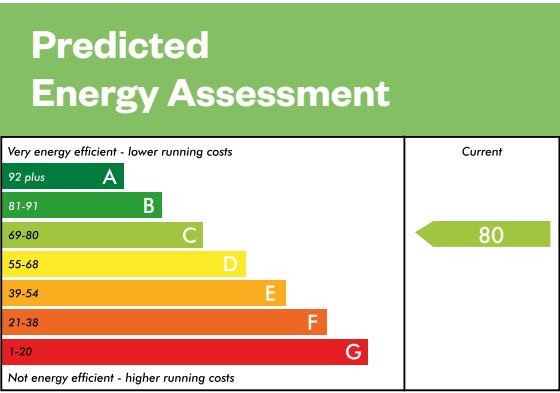


Computer Generated Image - A typical Kennedy

The Kennedy

Plots 217, 222, 225 – as shown

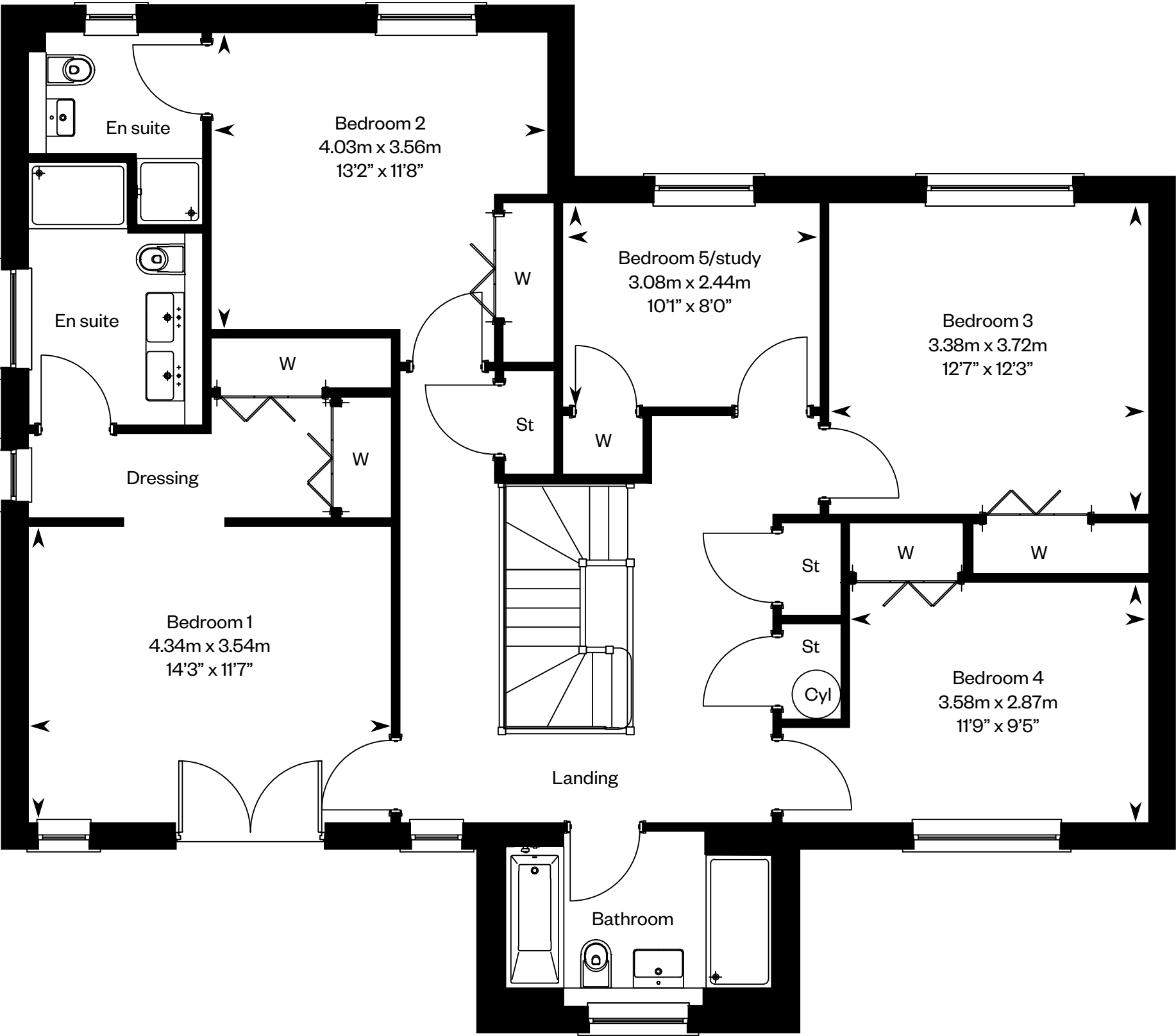
Plots 212, 277 – handed



This is a Predicted Energy Assessment for properties that are incomplete. Once the property is completed, this rating will be updated and an official Energy Performance Certificate will be created for the property.



Ground floor



First floor

Please ask your Sales Consultant for further details. ST: Store cupboard. W: Wardrobe.

IMPORTANT NOTICE TO CUSTOMERS: The Consumer Protection from Unfair Trading Regulations 2008. Cala Homes (North) Limited operates a policy of continual product development and the specifications outlined in this brochure are indicative only. The computer generated images and photographs do not necessarily represent the actual finishings/elevation or treatments, landscaping, furnishings and fittings at this development. Information contained is accurate at date of publication on 26.09.22 . See the main brochure for the full Consumer Protection statement.

The Laird

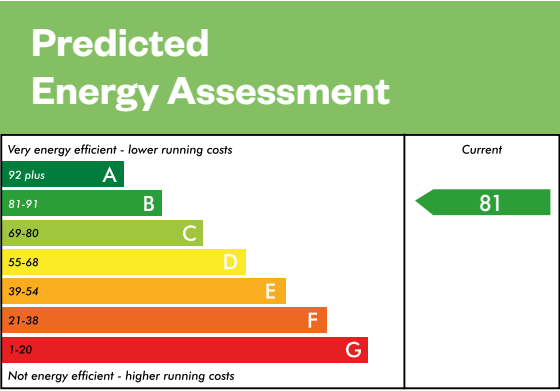
4 bedroom detached home



Computer Generated Image - A typical Laird

The Laird

Plots 218, 251 – as shown



The Lewis

5 bedroom detached home

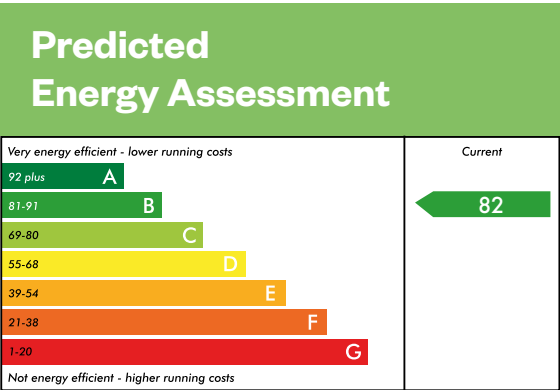


Computer Generated Image - A typical Lewis

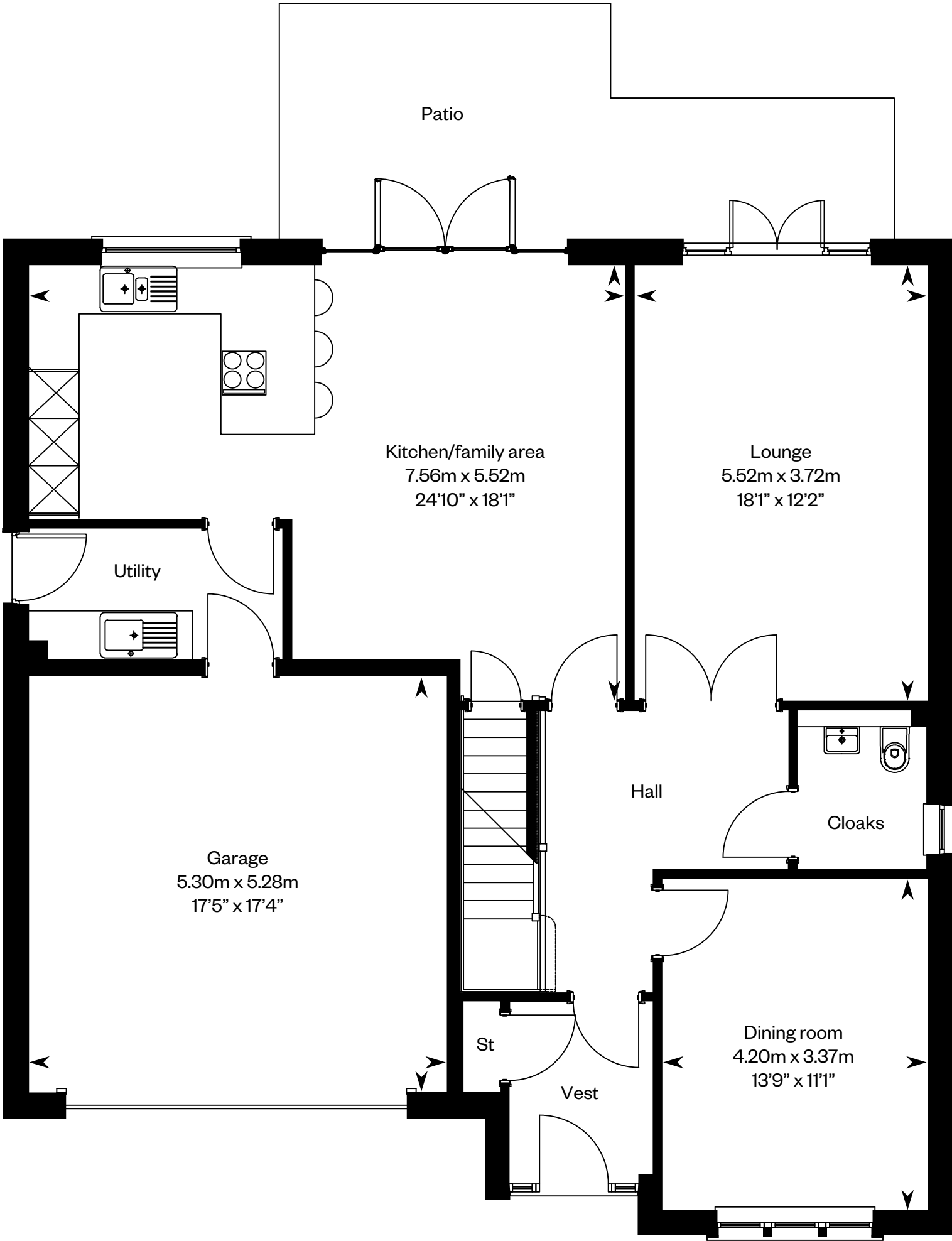
The Lewis

Plots 226, 233 – as shown

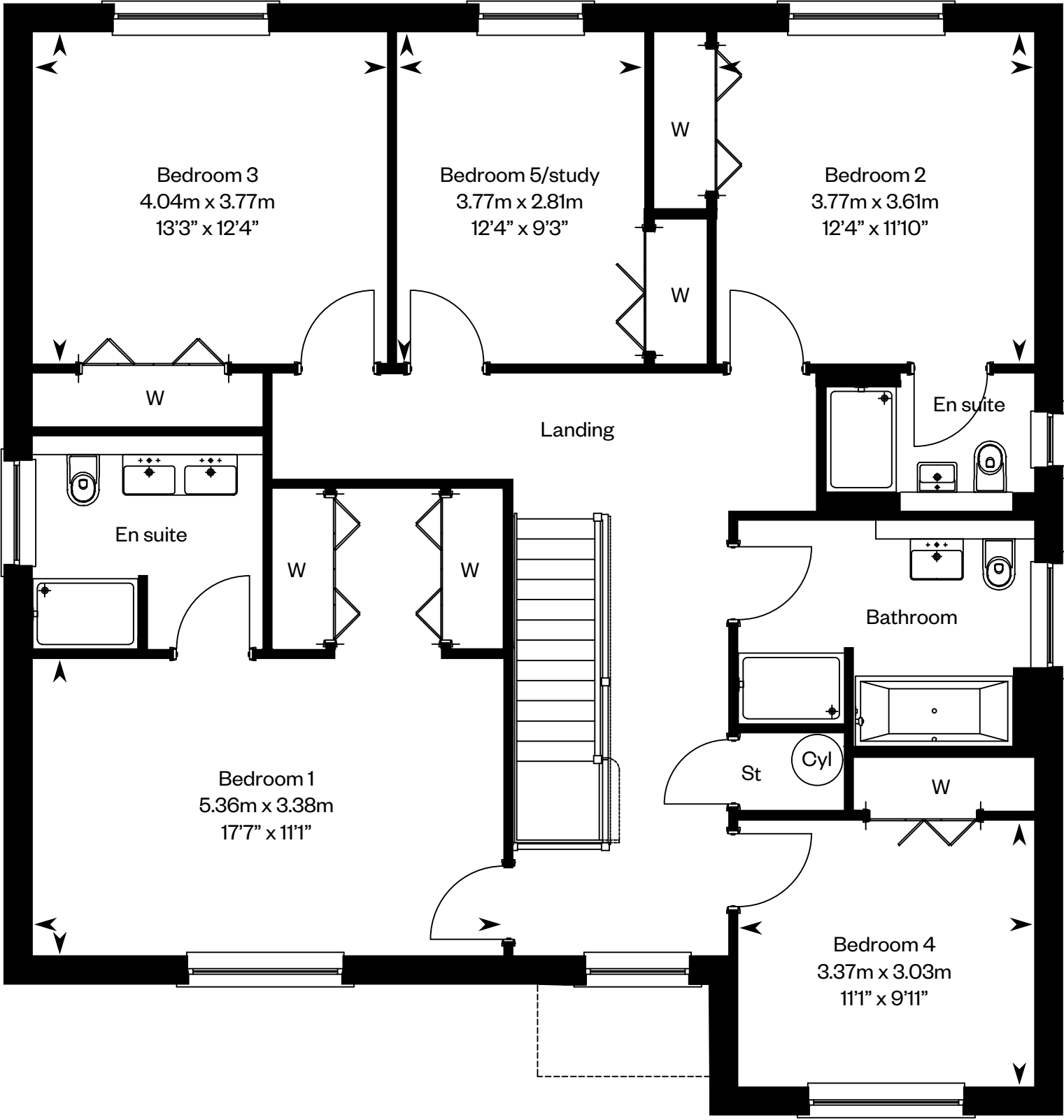
Plot 279 – handed



This is a Predicted Energy Assessment for properties that are incomplete. Once the property is completed, this rating will be updated and an official Energy Performance Certificate will be created for the property.



Ground floor



First floor

Please ask your Sales Consultant for further details. ST: Store cupboard. W: Wardrobe.

IMPORTANT NOTICE TO CUSTOMERS: The Consumer Protection from Unfair Trading Regulations 2008. Cala Homes (North) Limited operates a policy of continual product development and the specifications outlined in this brochure are indicative only. The computer generated images and photographs do not necessarily represent the actual finishings/elevation or treatments, landscaping, furnishings and fittings at this development. Information contained is accurate at date of publication on 26.09.22 . See the main brochure for the full Consumer Protection statement.

The Lowther

5 bedroom detached home

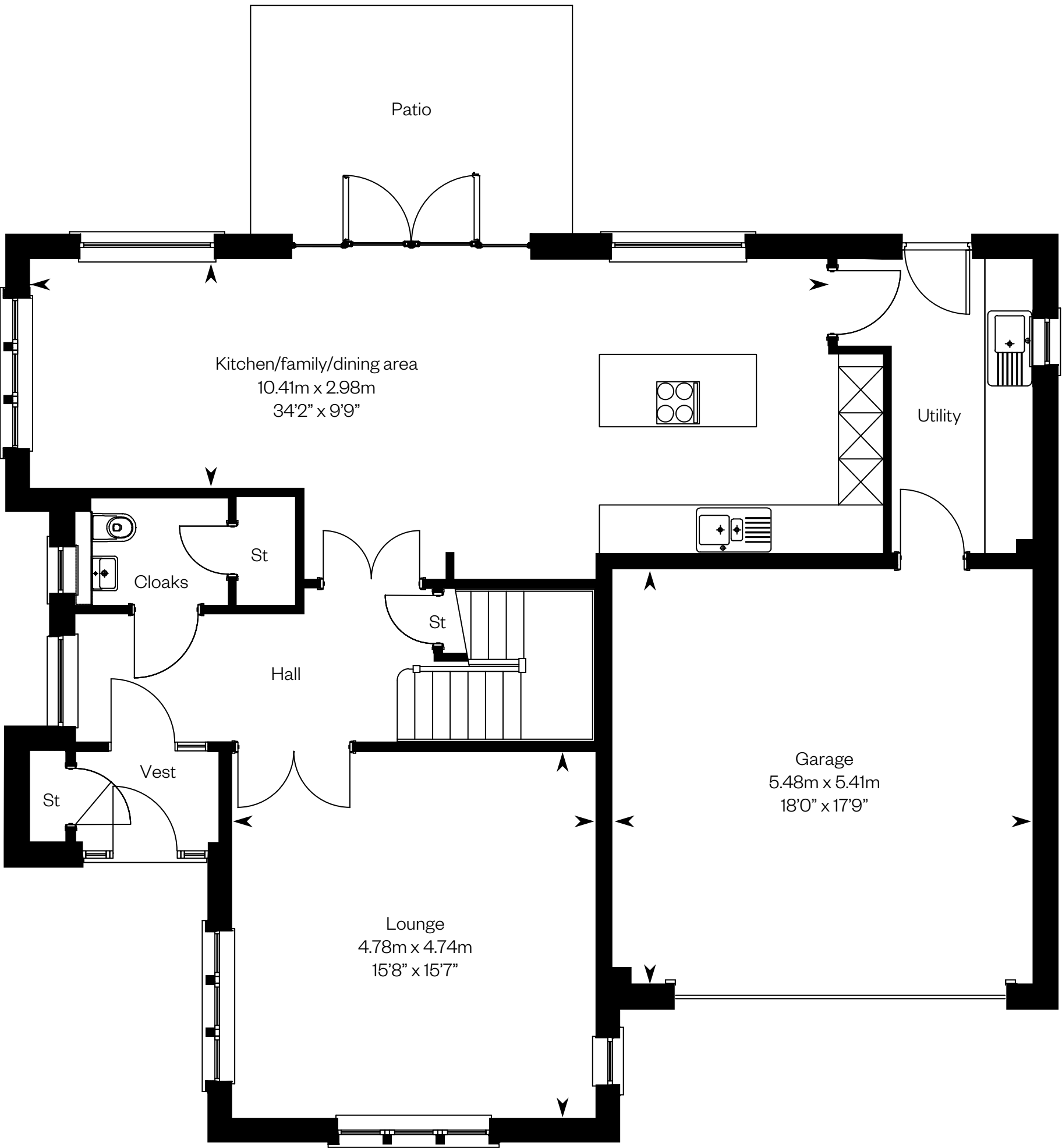
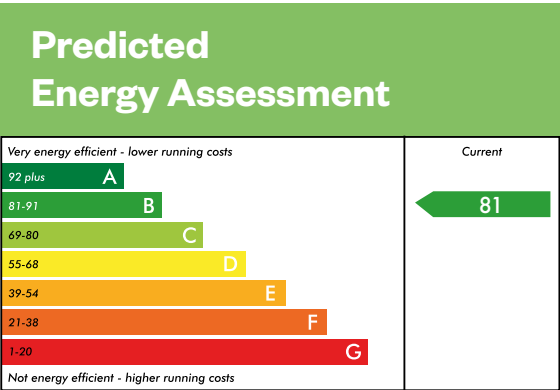


Computer Generated Image - A typical Lowther

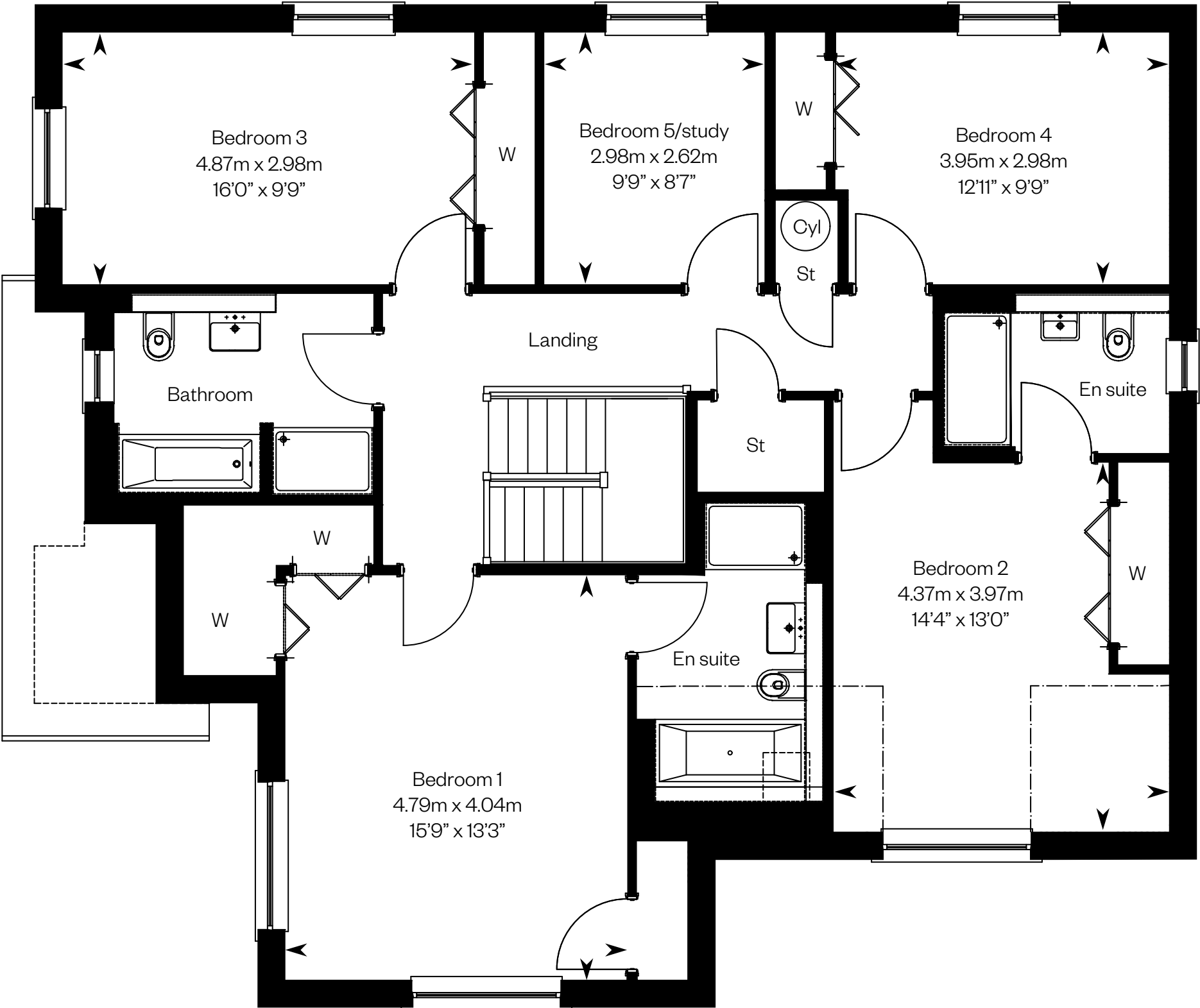
The Lowther

Plots 230, 272, 275, 280 – as shown

Plots 207, 208, 276 – handed



Ground floor



First floor

Please ask your Sales Consultant for further details. ST: Store cupboard. W: Wardrobe.

IMPORTANT NOTICE TO CUSTOMERS: The Consumer Protection from Unfair Trading Regulations 2008. Cala Homes (North) Limited operates a policy of continual product development and the specifications outlined in this brochure are indicative only. The computer generated images and photographs do not necessarily represent the actual finishings/elevation or treatments, landscaping, furnishings and fittings at this development. Information contained is accurate at date of publication on 26.09.22 . See the main brochure for the full Consumer Protection statement.