

Cala at Kingsmere

Blewbury Apartments
2 bedroom homes



Computer generated image - Blewbury Apartments

Town and country living

Kingsmere, a vibrant and growing community, is wonderfully located with great shops, leisure facilities and a retail park with a gym.

Bicester Village is just a short walk away and you'll enjoy great connectivity by rail to Oxford, Reading and London – with easy access to the M40 too.



Make your perfect move

There are just 6 of these stylish 2 bedroom low-maintenance apartments available, complete with Bosch integrated appliances, flooring throughout and silestone kitchen worktop at no extra cost. Complete with two dedicated parking spaces, with selected plots featuring a tandem garage or carport*. Simply perfect!

*Plot specific. Please ask your Sales Consultant for further details.

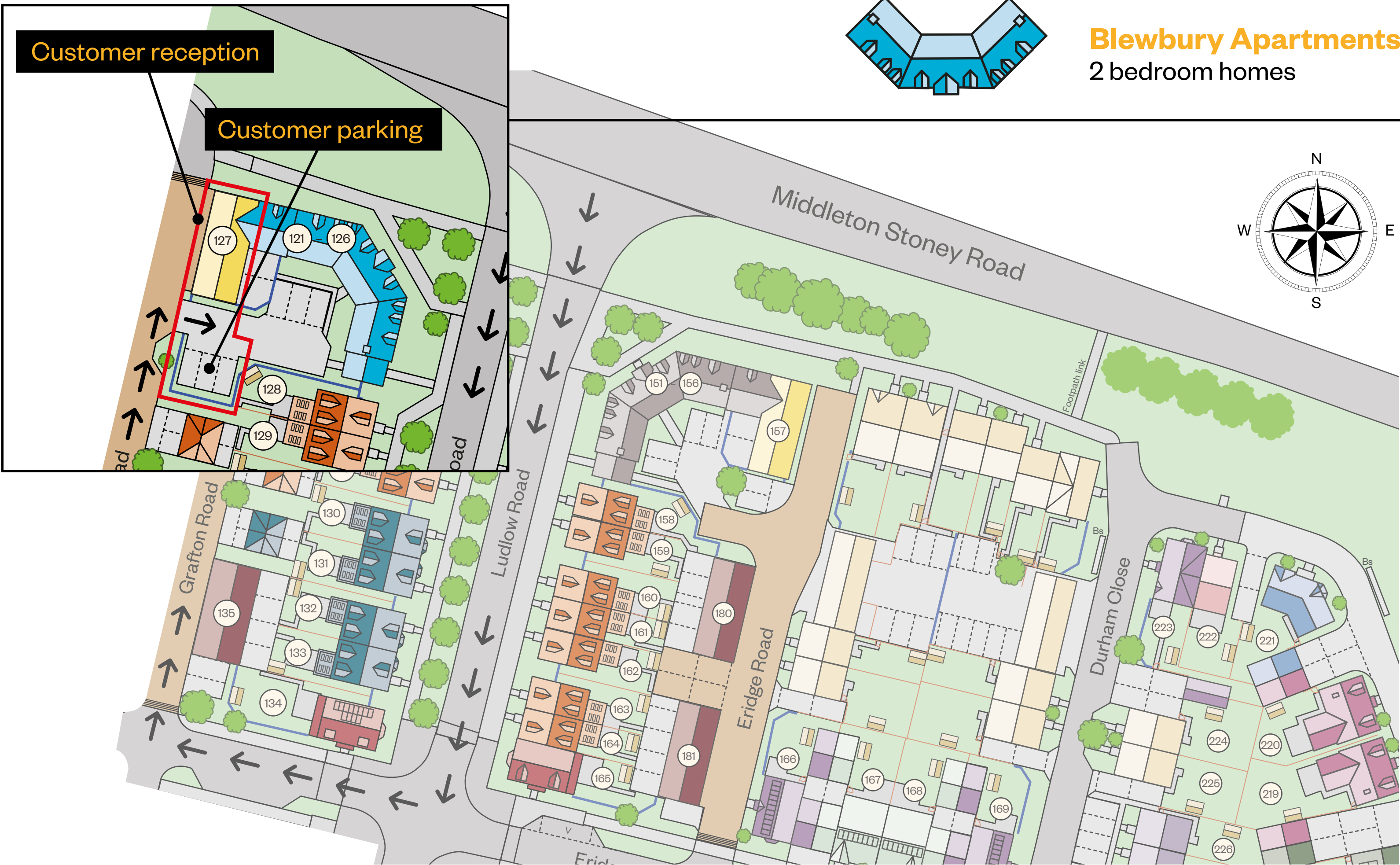


Photography from a previous development



Stock photography

Cala at Kingsmere



Please note that our Customer Reception entrance is now accessed via Grafton Road. You can access the development from Middleton Stoney Road. Follow the route denoted in black arrows to our customer car park which is located to the side of our Customer Reception.

If you have any issues finding us, please contact our Sales Consultants directly on **01869 934 621** for assistance.
We look forward to meeting you.

[Click here for current availability and prices](#)

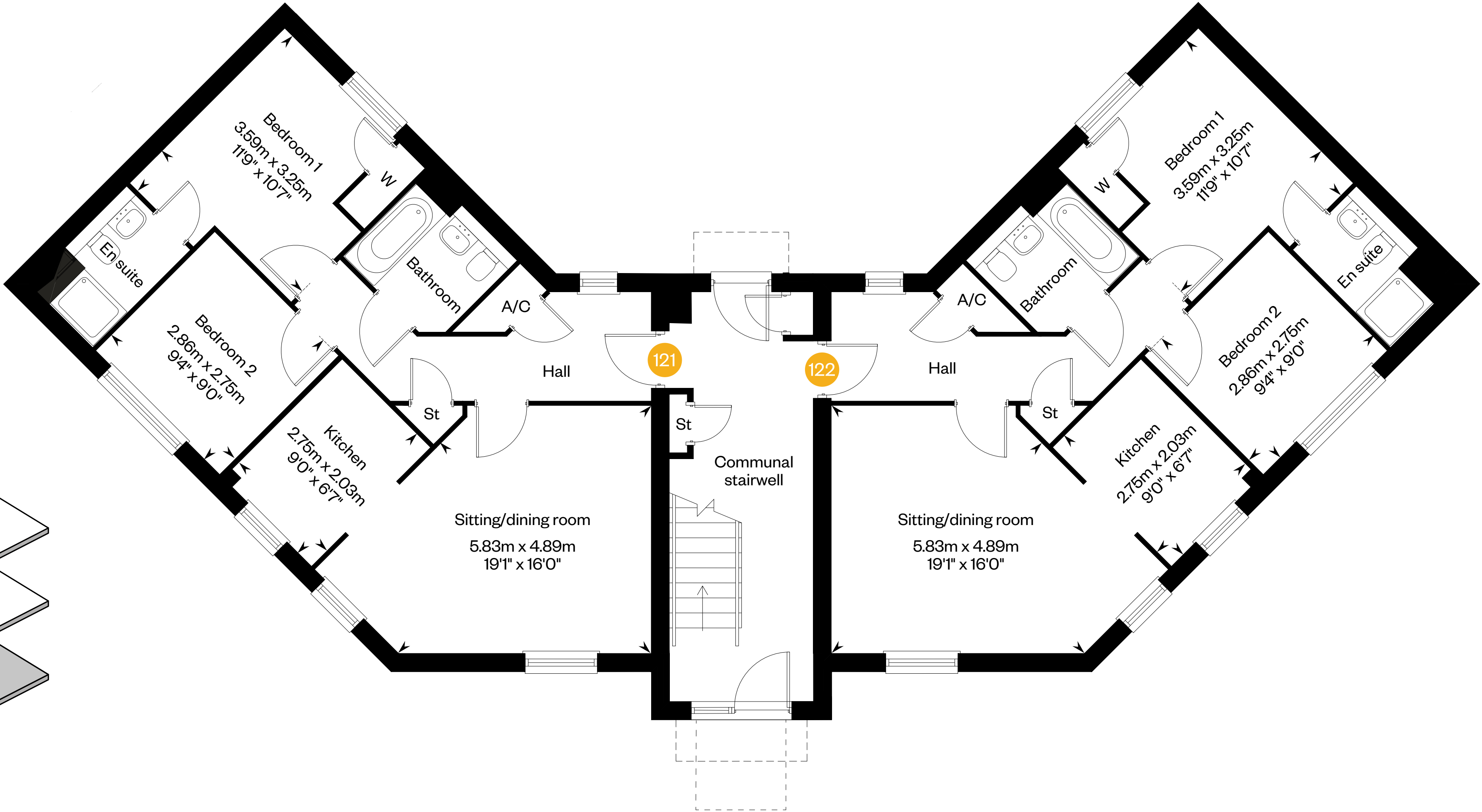
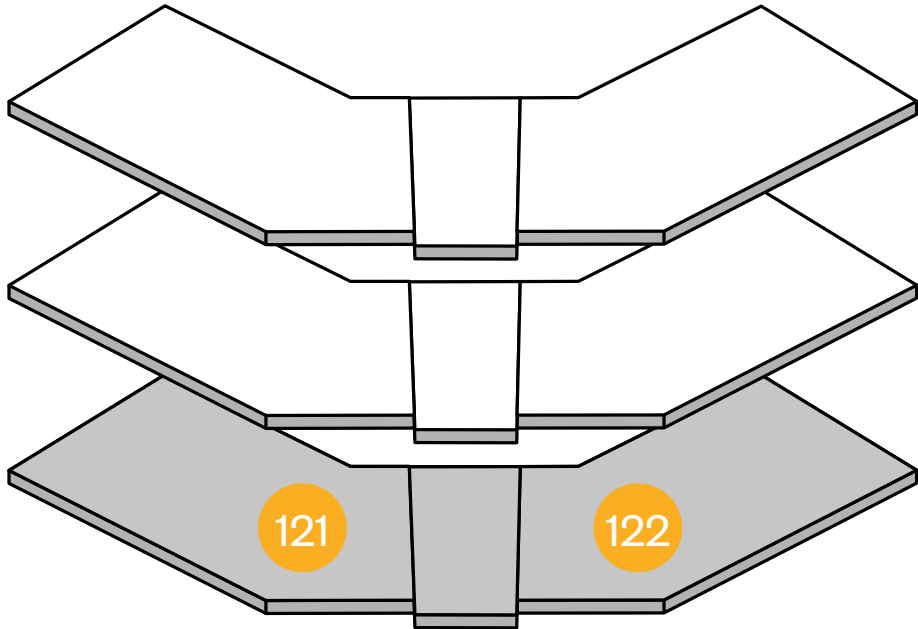
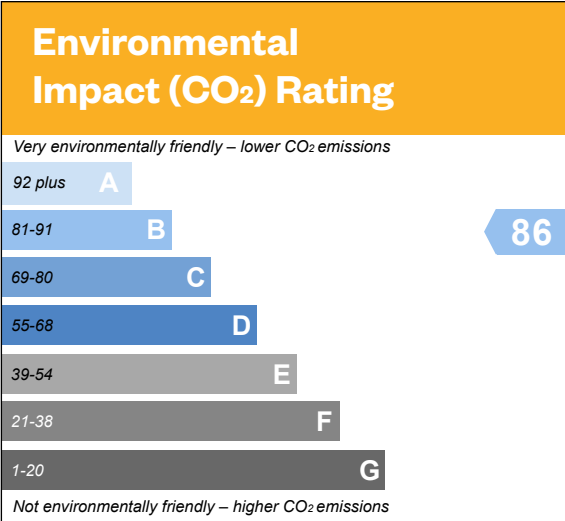
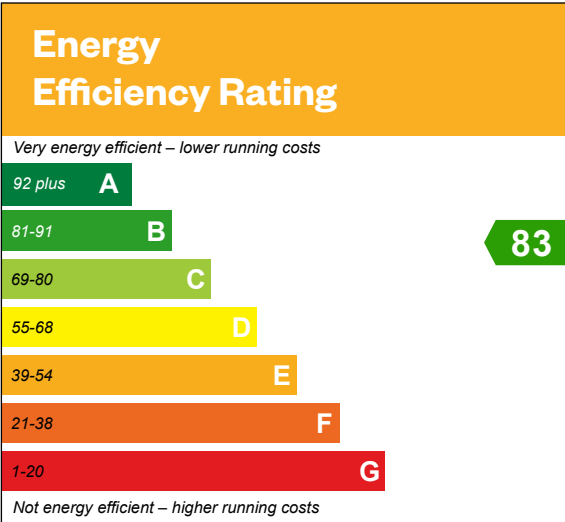


The above development layout is not drawn to scale and is for general guidance only.
Road layouts, pathways and external treatments may differ. Landscaping is indicative only.
Please confirm the most up-to-date details with our sales consultants prior to reservation. V: Visitor parking space.

Blewbury Apartments

Ground floor

Plots 121 & 122

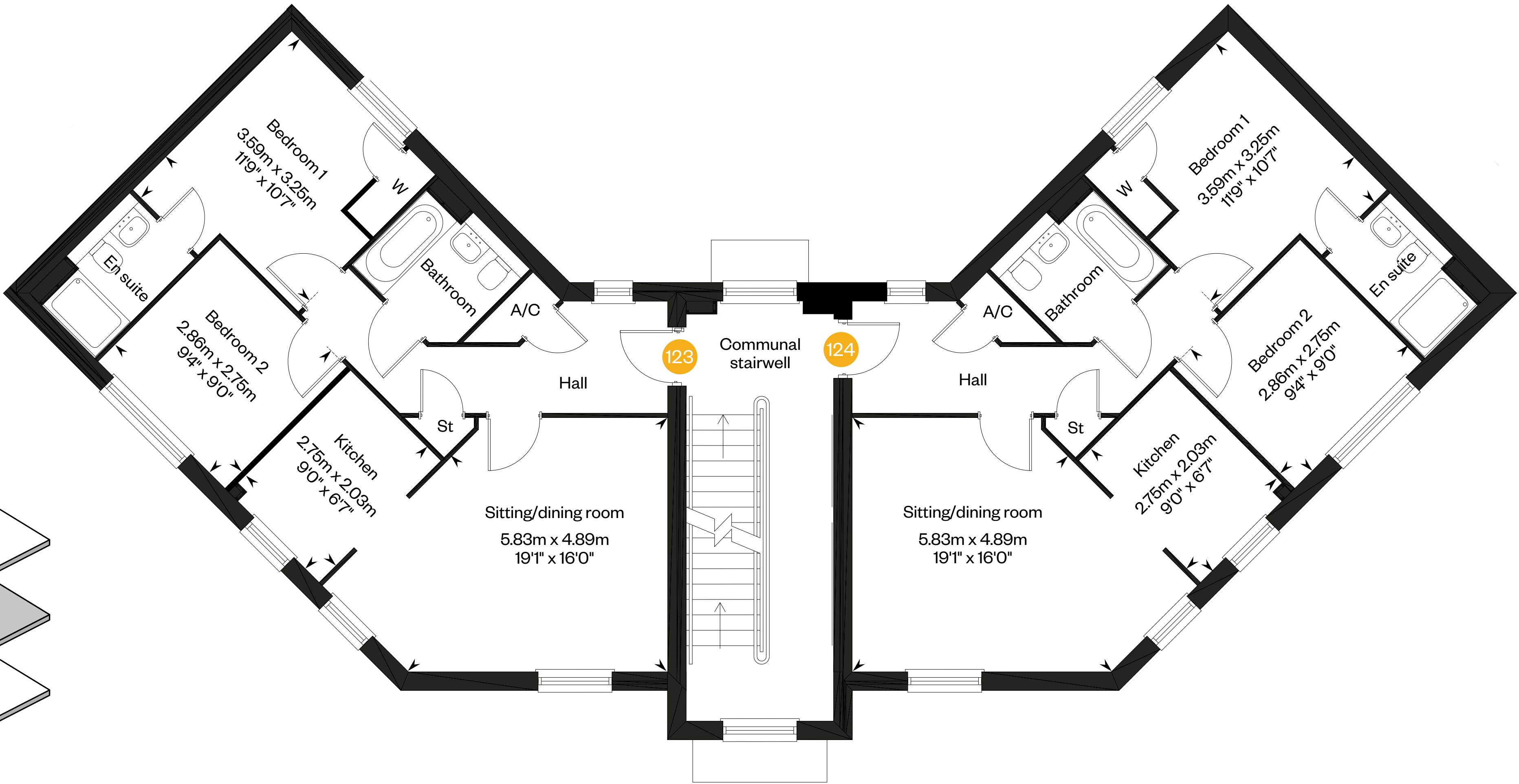
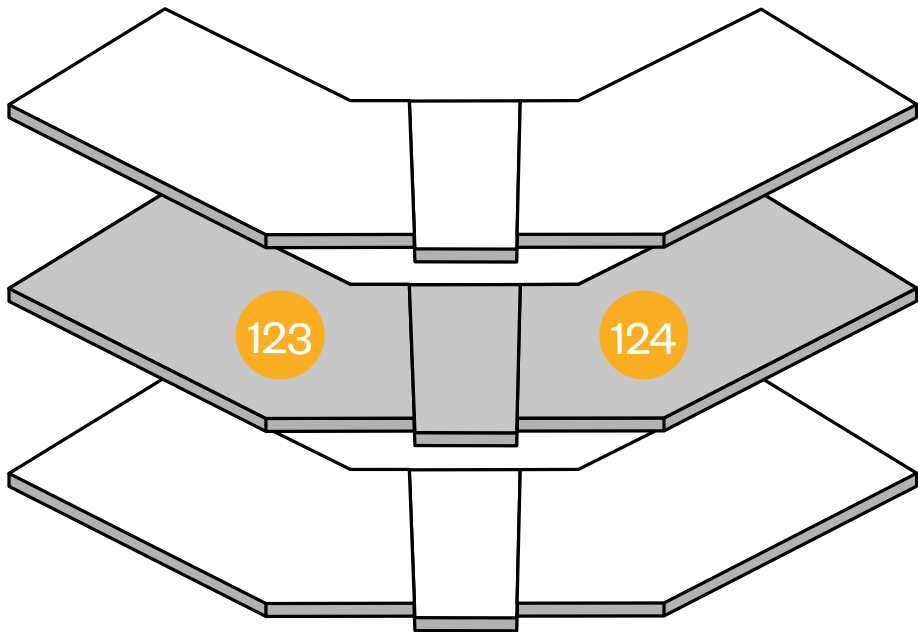
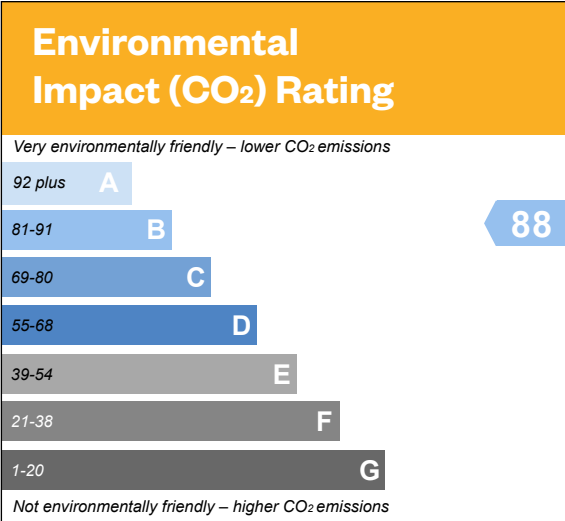
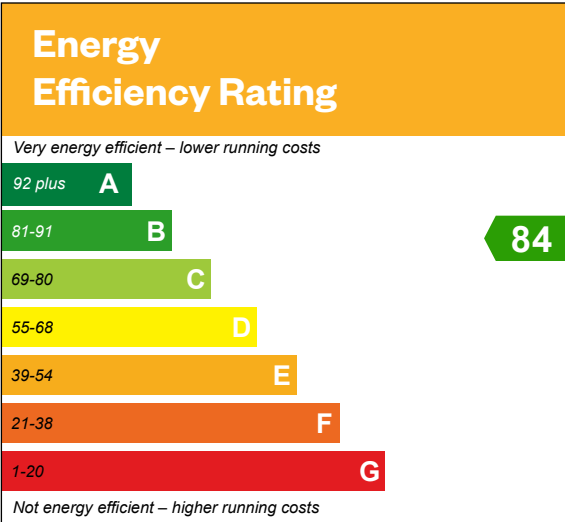


Please ask your Sales Consultant for further details. A/C: Airing cupboard. St: Store cupboard. W: Wardrobe.

Blewbury Apartments

First floor

Plots 123 & 124

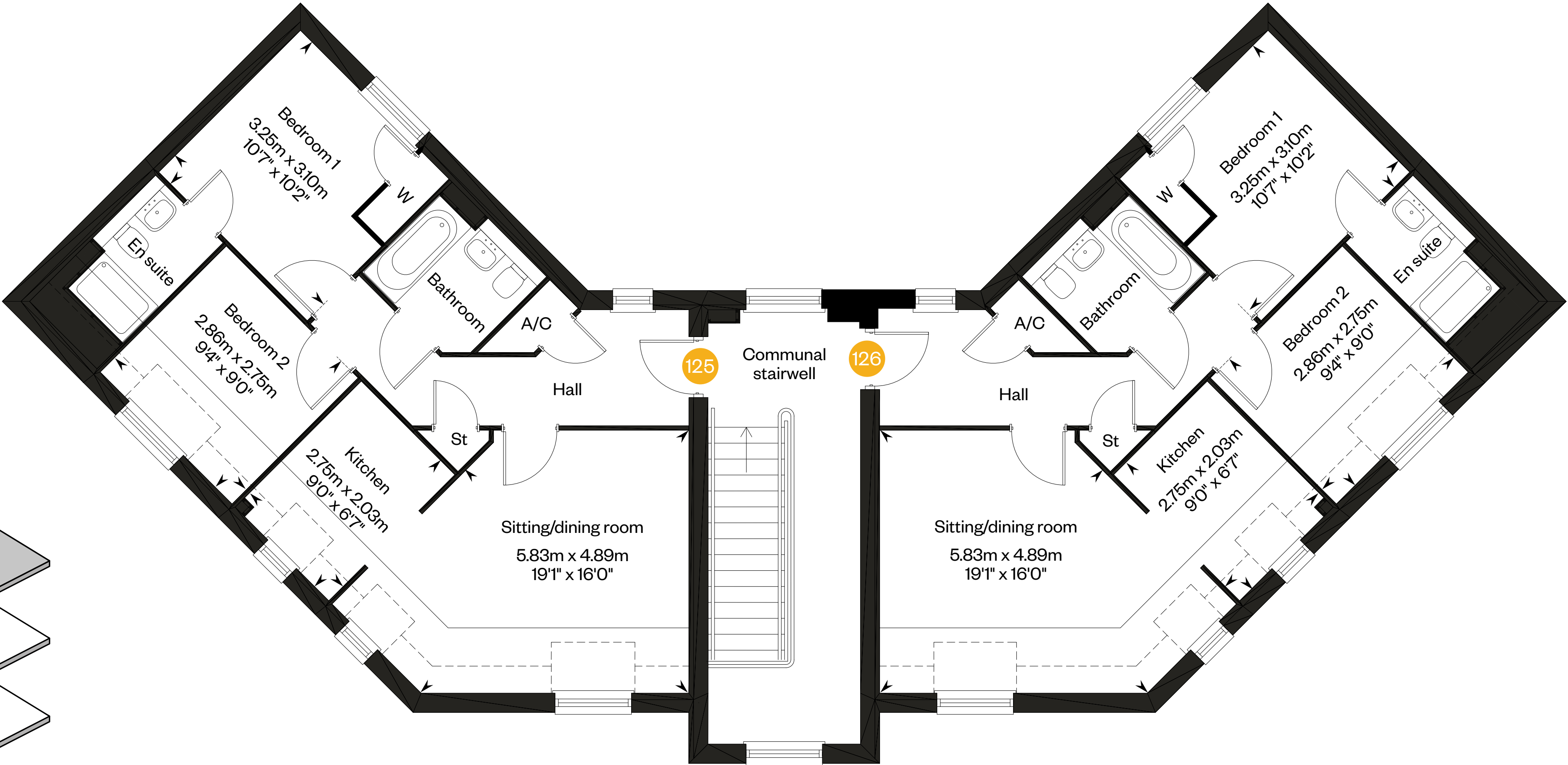
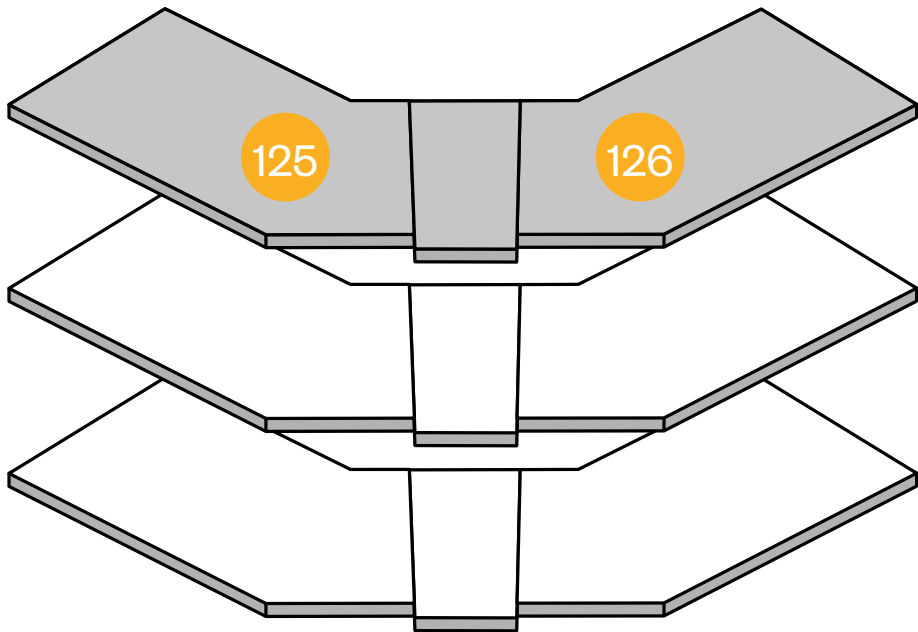
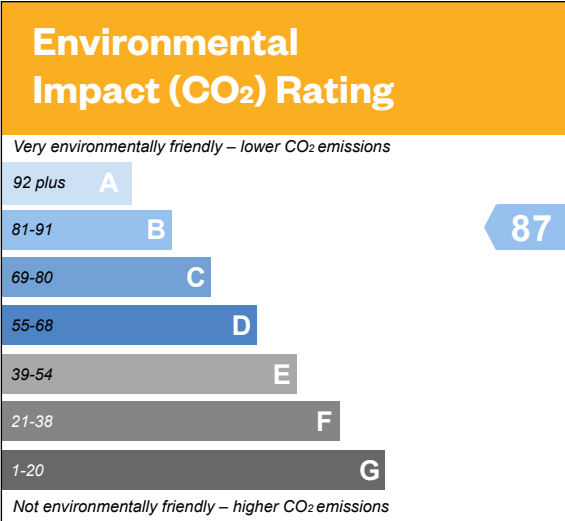
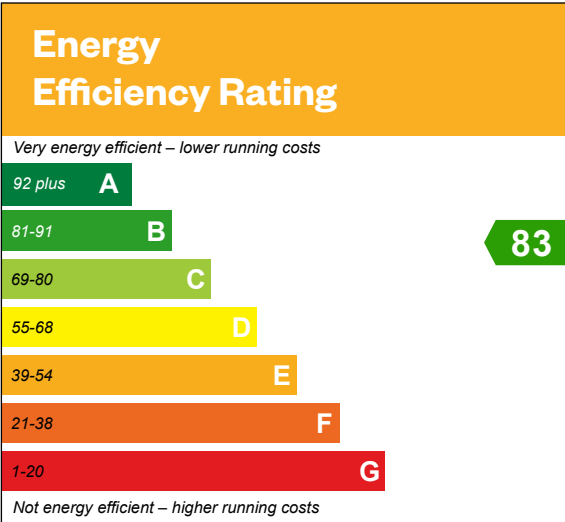


Please ask your Sales Consultant for further details. A/C: Airing cupboard. St: Store cupboard. W: Wardrobe.

Blewbury Apartments

Second floor

Plots 125 & 126



Please ask your Sales Consultant for further details. A/C: Airing cupboard. St: Store cupboard. W: Wardrobe.

IMPORTANT NOTICE TO CUSTOMERS: The Consumer Protection from Unfair Trading Regulations 2008. Cala Homes (Midlands) Limited operates a policy of continual product development and the specifications outlined in this brochure are indicative only. The computer generated images and photographs do not necessarily represent the actual finishings/elevation or treatments, landscaping, furnishings and fittings at this development. Information contained is accurate at date of publication on 06.11.2023. See the main brochure for the full Consumer Protection statement.



Cala at Kingsmere,
Customer Reception on Grafton Road,
Accessed via Middleton Stoney Road,
Kingsmere, OX26 1FA

For more information



CALA.CO.UK



Stock photography

IMPORTANT NOTICE TO CUSTOMERS: Cala Homes is a registered developer with the New Homes Quality Code and operates a policy of continual product development and the site layout shown in this brochure insert is indicative only. Information contained is accurate at time of publication on 27.11.23. See the main brochure for the full Consumer Protection statement.