



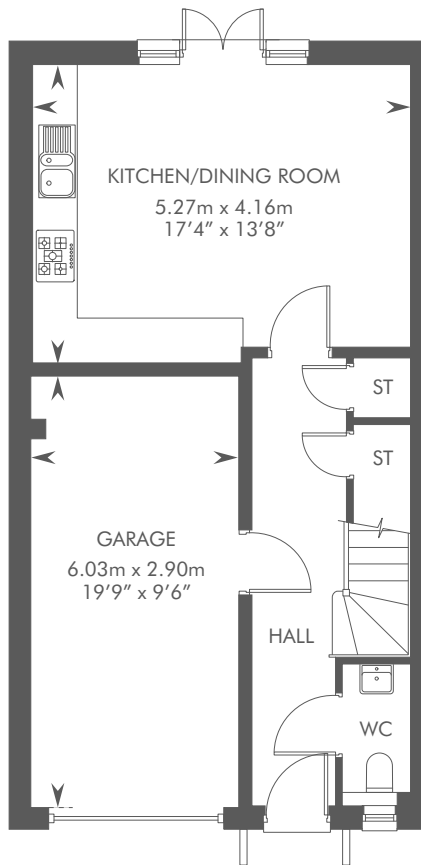
Computer generated image - The Lodthorpe

THE LODTHORPE

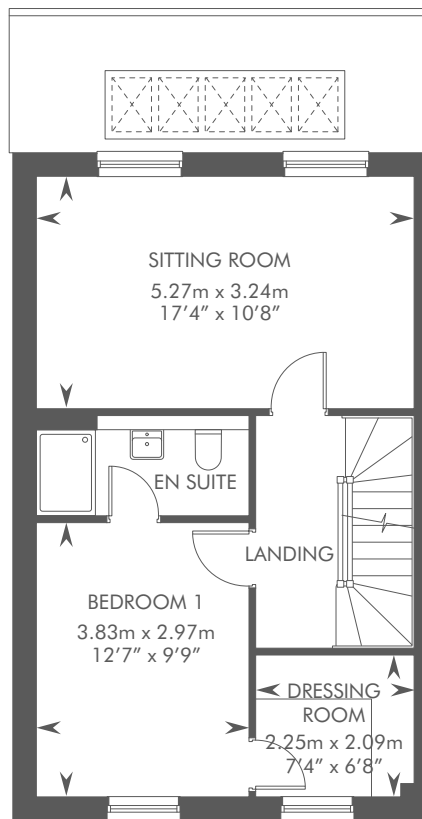
4 BEDROOM TOWNHOUSE WITH INTEGRAL GARAGE



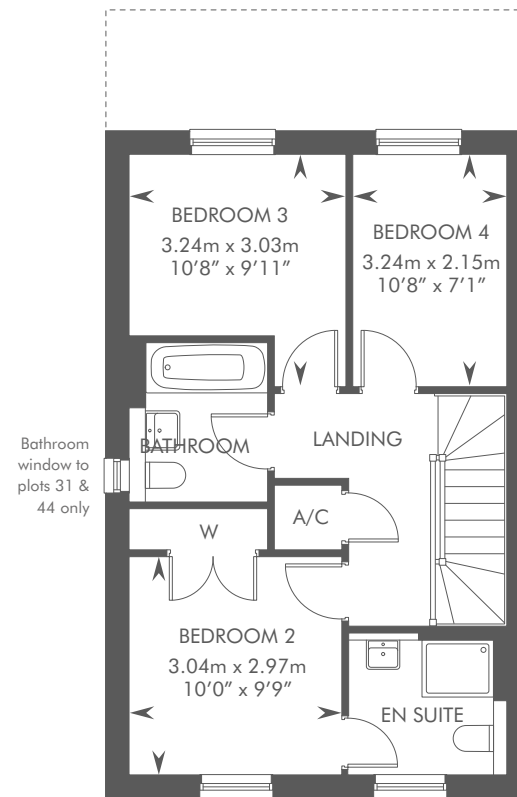
THE LODTHORPE
PLOTS 31, 32, 33 & 34 – AS SHOWN
PLOTS 43 & 44 – HANDED



GROUND FLOOR



FIRST FLOOR



SECOND FLOOR

Please ask your Sales Consultant for further details. A/C: Airing cupboard. ST: Store cupboard. W: Wardrobe. ☒: Roof light.

The consumer protection from unfair trading regulations 2008. CALA Homes (North Home Counties) Limited operates a policy of continual product development and the specifications outlined in this brochure are indicative only. CALA reserves the right to implement minor changes to the sizes and specifications shown on any plans or drawings in this brochure without warning. Where alterations to the design, construction or materials to be used in the construction of the property would materially alter the internal floor space, appearance or market value of the property, we will ensure that these changes are communicated to potential purchasers. Whilst these particulars are prepared with all due care for the convenience of intending purchasers, the information is intended as a guide. Floor plans, dimensions and specifications are correct at the time of print.

