

# The Brodick

4 bedroom detached home



Computer generated image – A typical Brodick

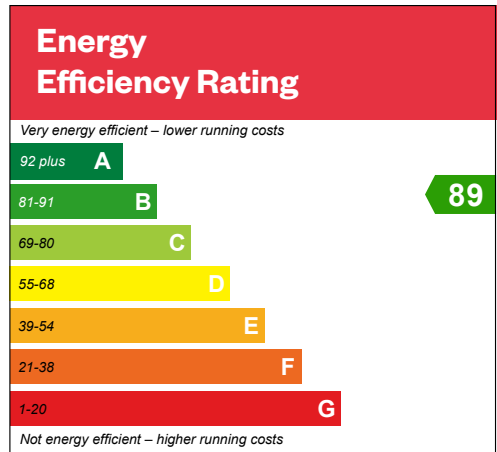


# The Brodick

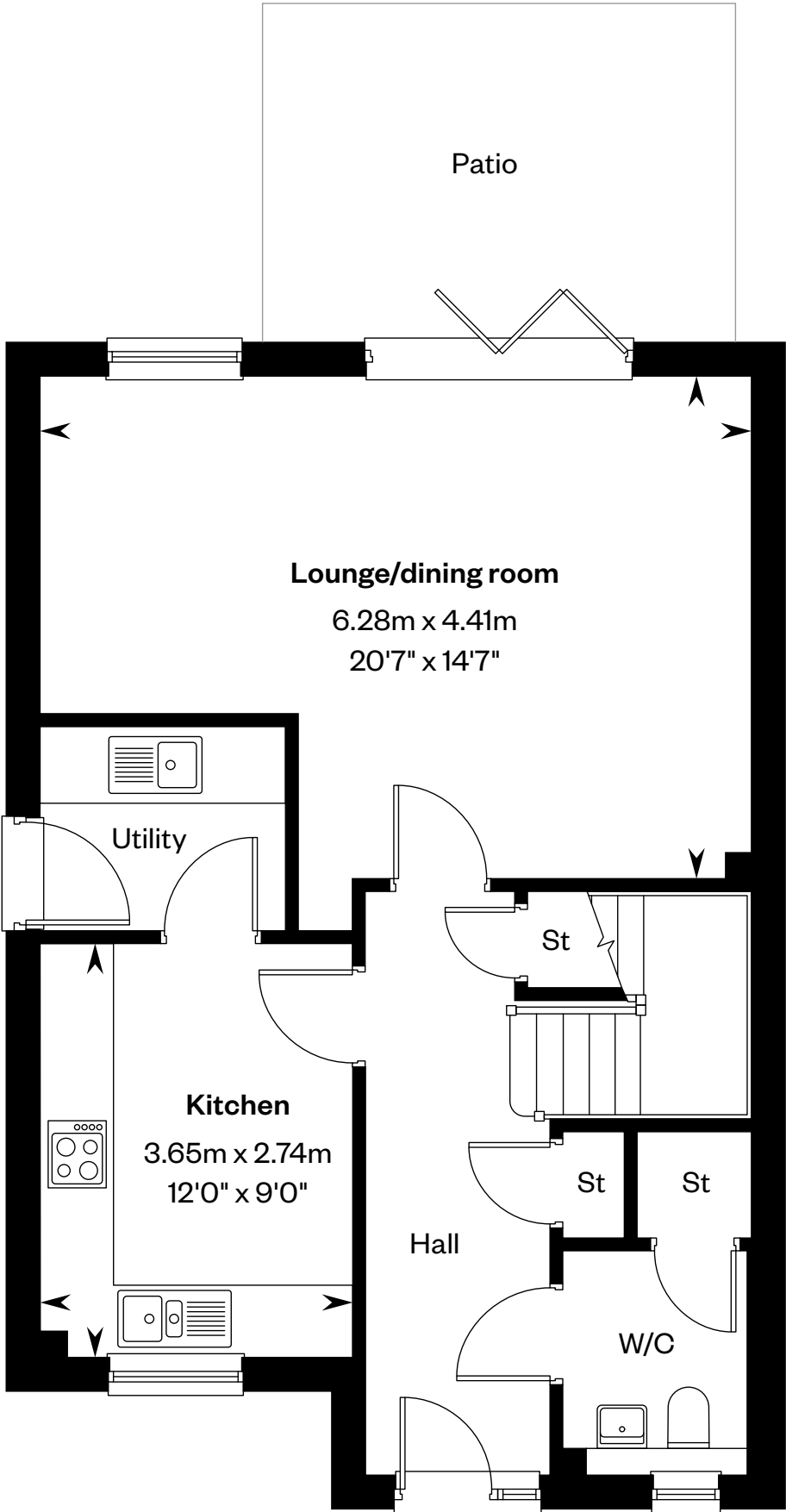
## 4 bedroom detached home

Plot 6 – as shown

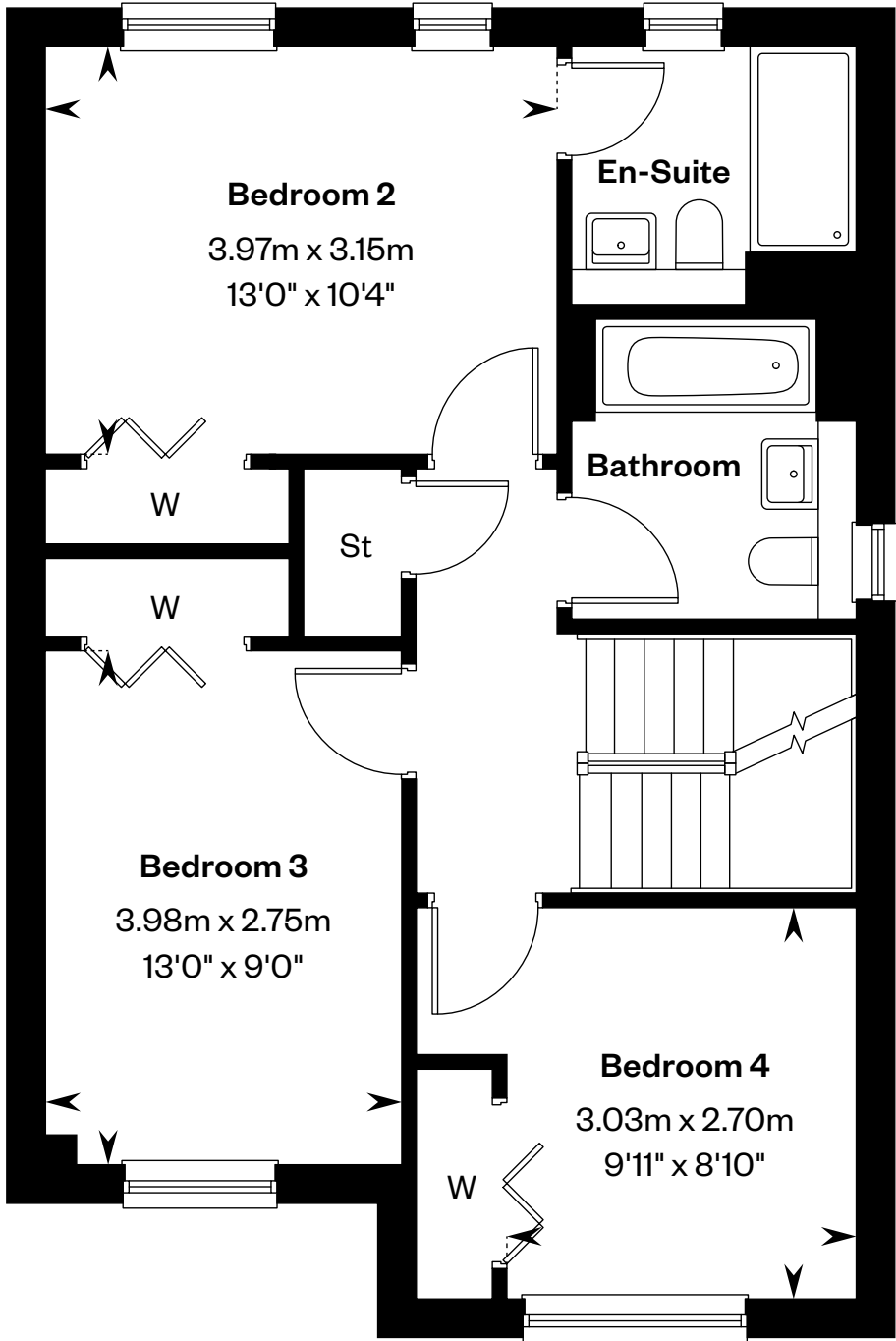
Plot 7 – handed



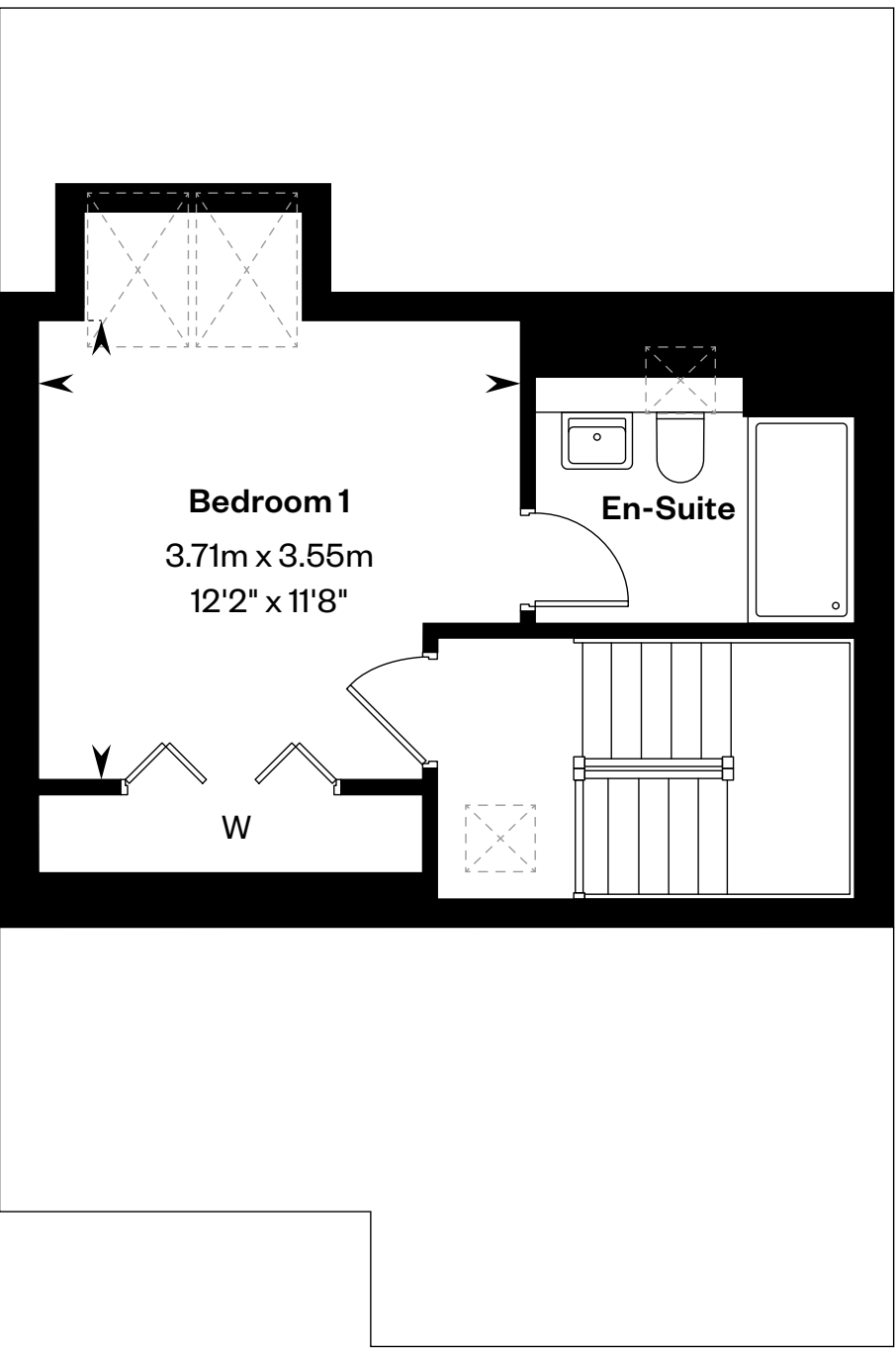
This is a Predicted Energy Assessment for properties that are incomplete. Once the property is completed, this rating will be updated and an official Energy Performance Certificate will be created for the property.



Ground floor



First floor



Second floor

Please ask your Sales Consultant for further details. St: Store cupboard. W: Wardrobe. ☒: Roof light/velux window.

IMPORTANT NOTICE TO CUSTOMERS: The Consumer Protection from Unfair Trading Regulations 2008. Cala Homes (West) Limited operates a policy of continual product development and the specifications outlined in this brochure are indicative only. The computer generated images and photographs do not necessarily represent the actual finishings/elevation or treatments, landscaping, furnishings and fittings at this development. Information contained is accurate at date of publication on 30.09.24. See the main brochure for the full Consumer Protection statement.



# The Bryce

4 bedroom detached home

CALA



Computer generated image - A typical Bryce

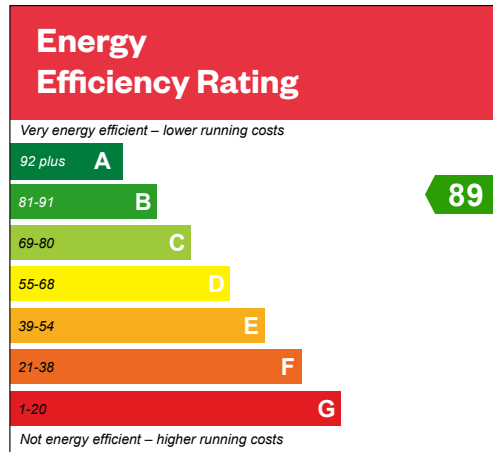


# The Bryce

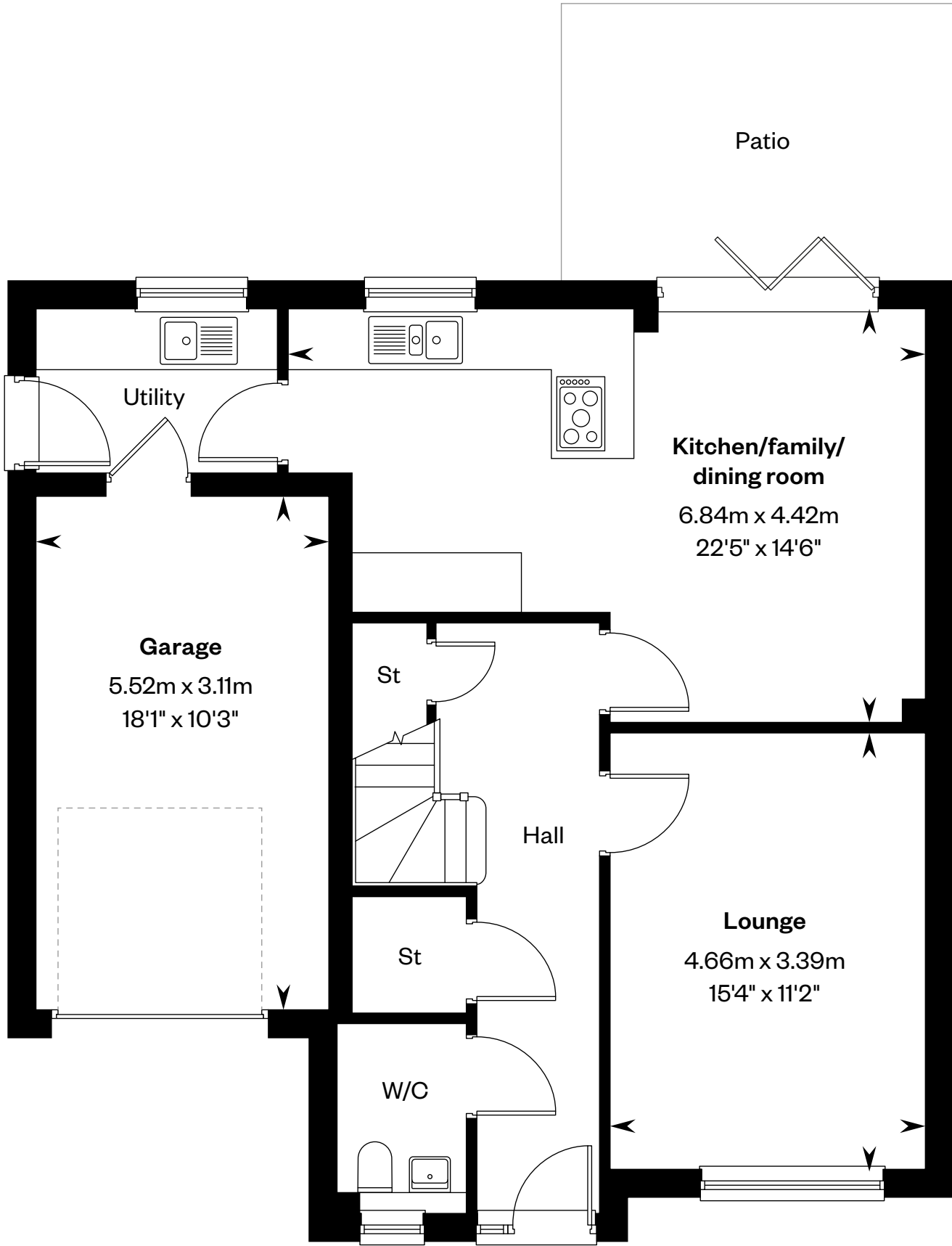
4 bedroom detached home

Plot 1 – as shown

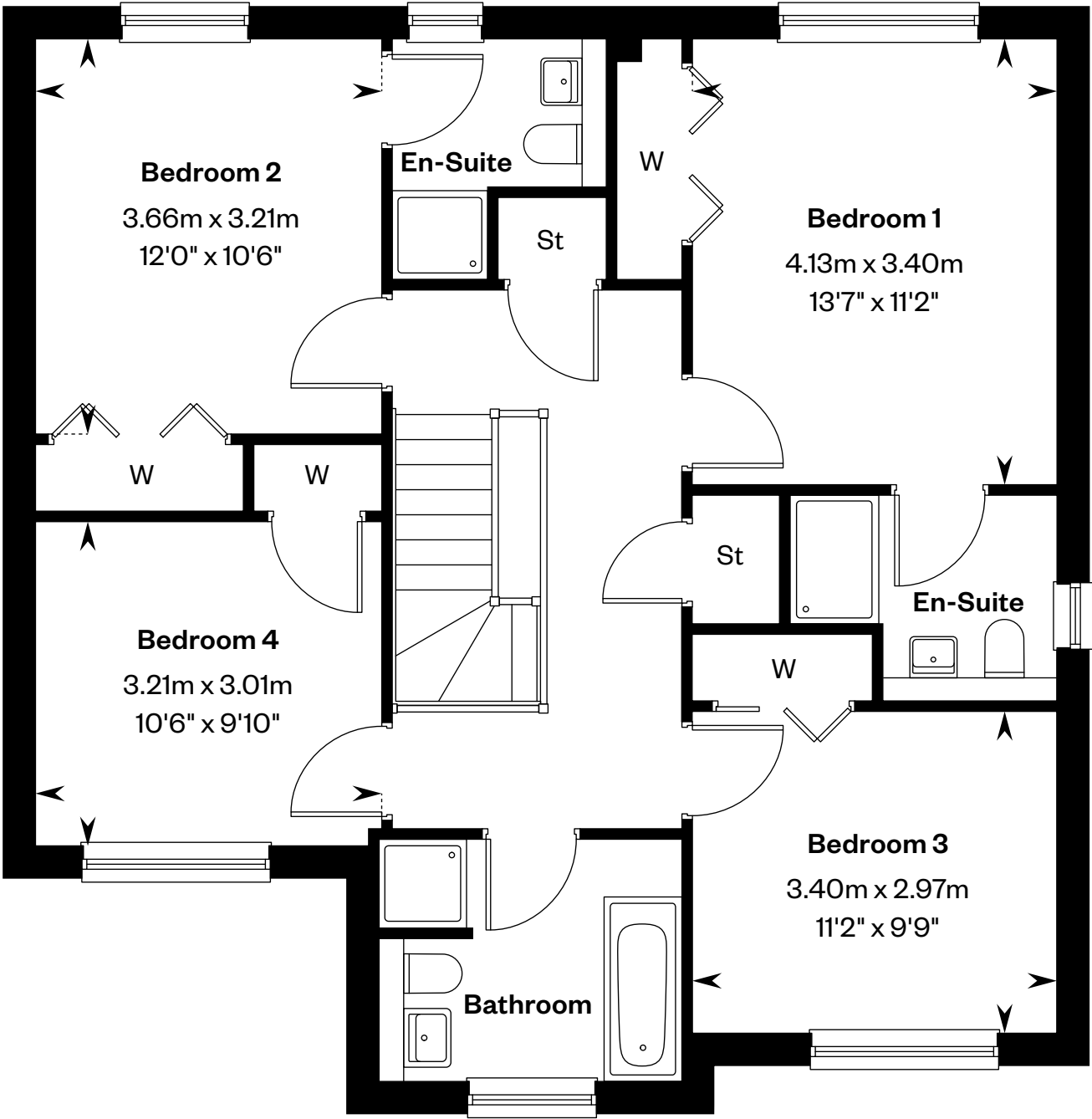
Plot 17 – handed



This is a Predicted Energy Assessment for properties that are incomplete. Once the property is completed, this rating will be updated and an official Energy Performance Certificate will be created for the property.



Ground floor



First floor

Please ask your Sales Consultant for further details. St: Store cupboard. W: Wardrobe.

IMPORTANT NOTICE TO CUSTOMERS: The Consumer Protection from Unfair Trading Regulations 2008. Cala Homes (West) Limited operates a policy of continual product development and the specifications outlined in this brochure are indicative only. The computer generated images and photographs do not necessarily represent the actual finishings/elevation or treatments, landscaping, furnishings and fittings at this development. Information contained is accurate at date of publication on 30.09.24. See the main brochure for the full Consumer Protection statement.



# The Crichton

5 bedroom detached home



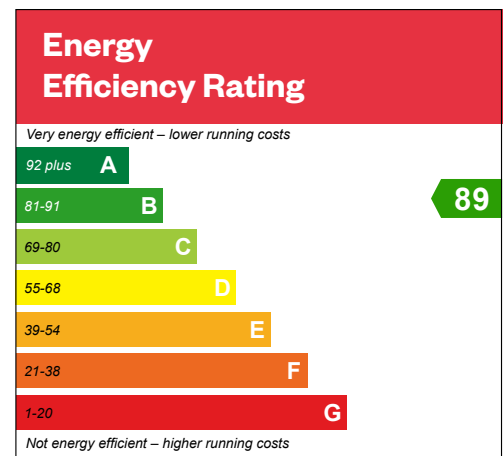


# The Crichton

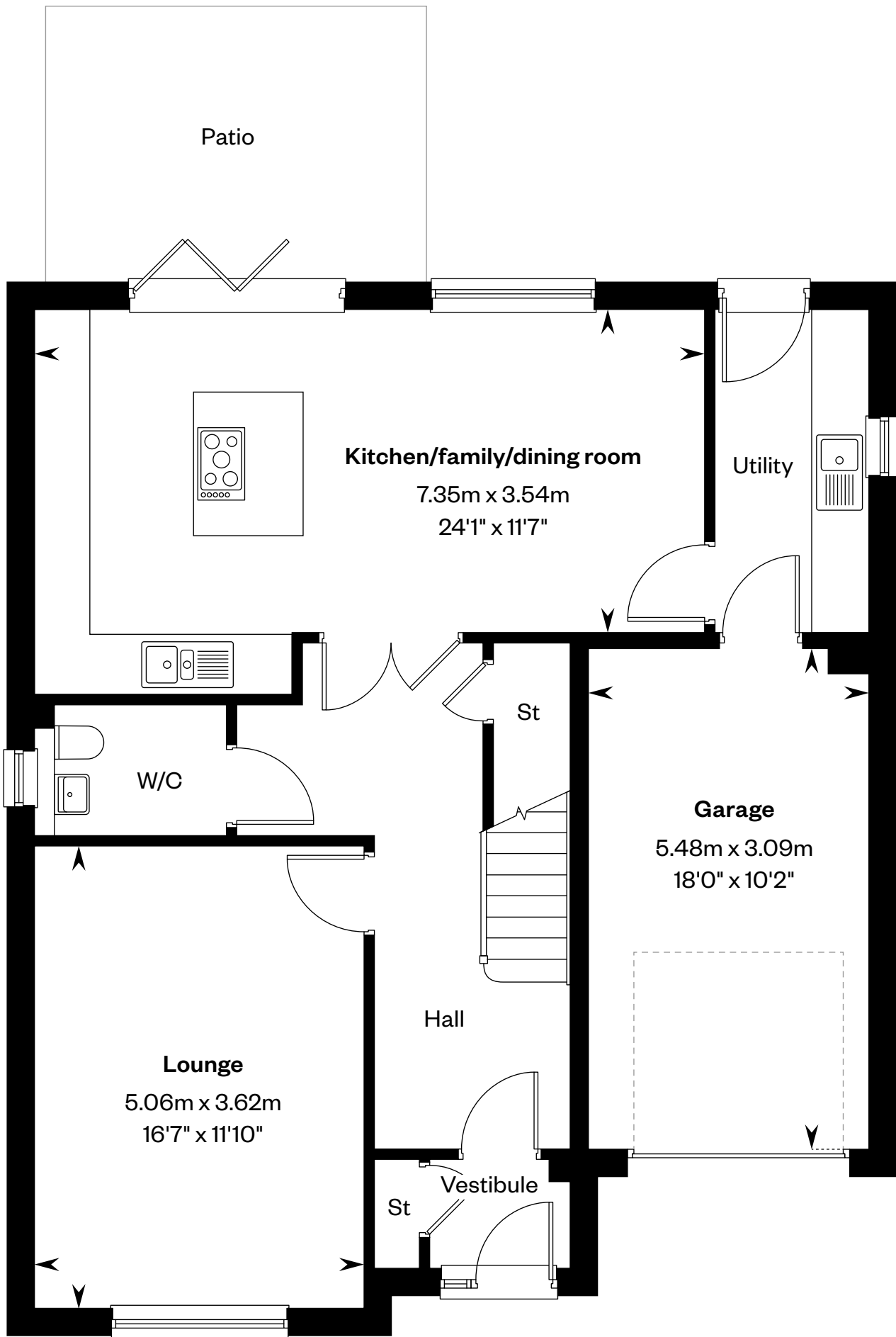
## 5 bedroom detached home

Plots 9, 13, 20 & 24 – as shown

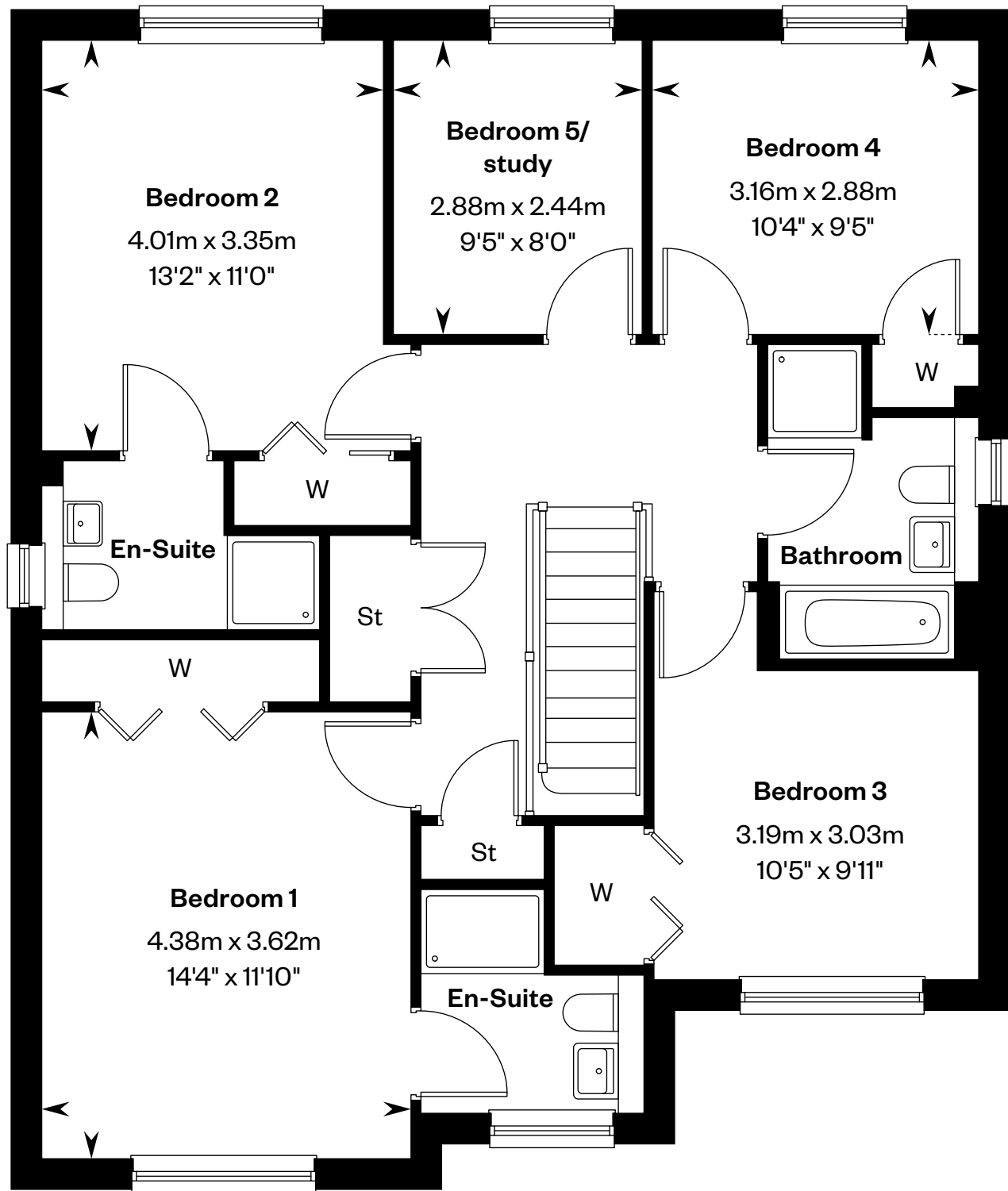
Plot 22 – handed



This is a Predicted Energy Assessment for properties that are incomplete. Once the property is completed, this rating will be updated and an official Energy Performance Certificate will be created for the property.



Ground floor



First floor

Please ask your Sales Consultant for further details. St: Store cupboard. W: Wardrobe.

IMPORTANT NOTICE TO CUSTOMERS: The Consumer Protection from Unfair Trading Regulations 2008. Cala Homes (West) Limited operates a policy of continual product development and the specifications outlined in this brochure are indicative only. The computer generated images and photographs do not necessarily represent the actual finishings/elevation or treatments, landscaping, furnishings and fittings at this development. Information contained is accurate at date of publication on 30.09.24. See the main brochure for the full Consumer Protection statement.



# The Darroch

5 bedroom detached home

CALA



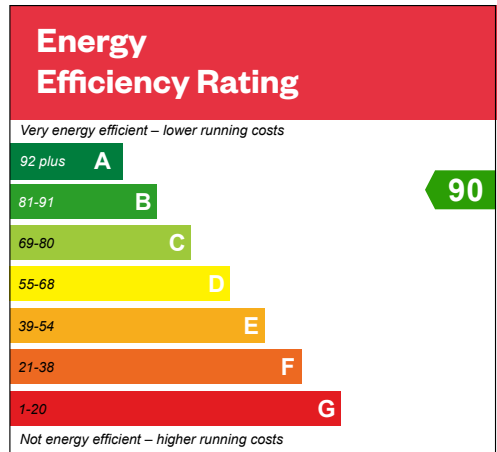


# The Darroch

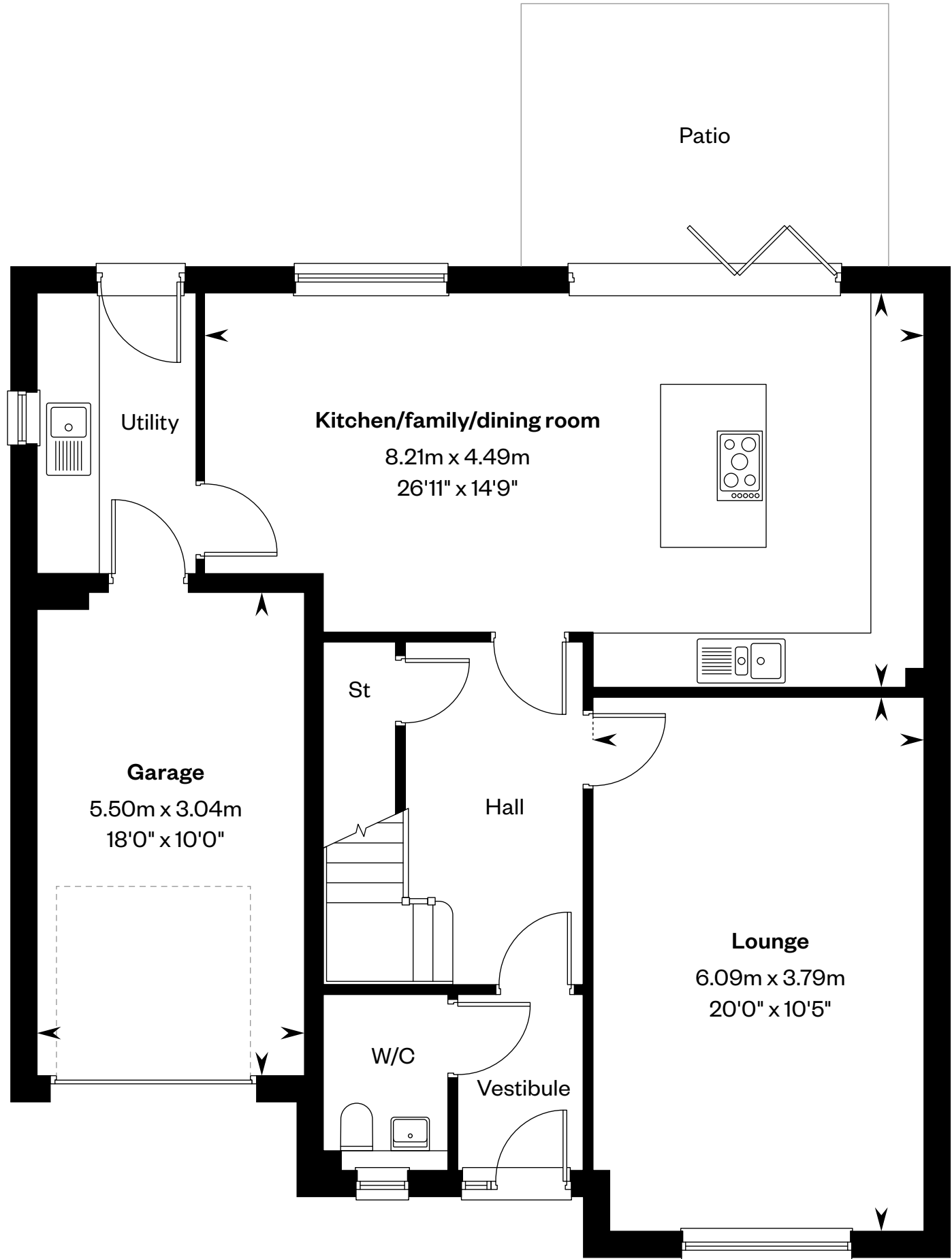
5 bedroom detached home

Plots 2, 4 & 5 – as shown

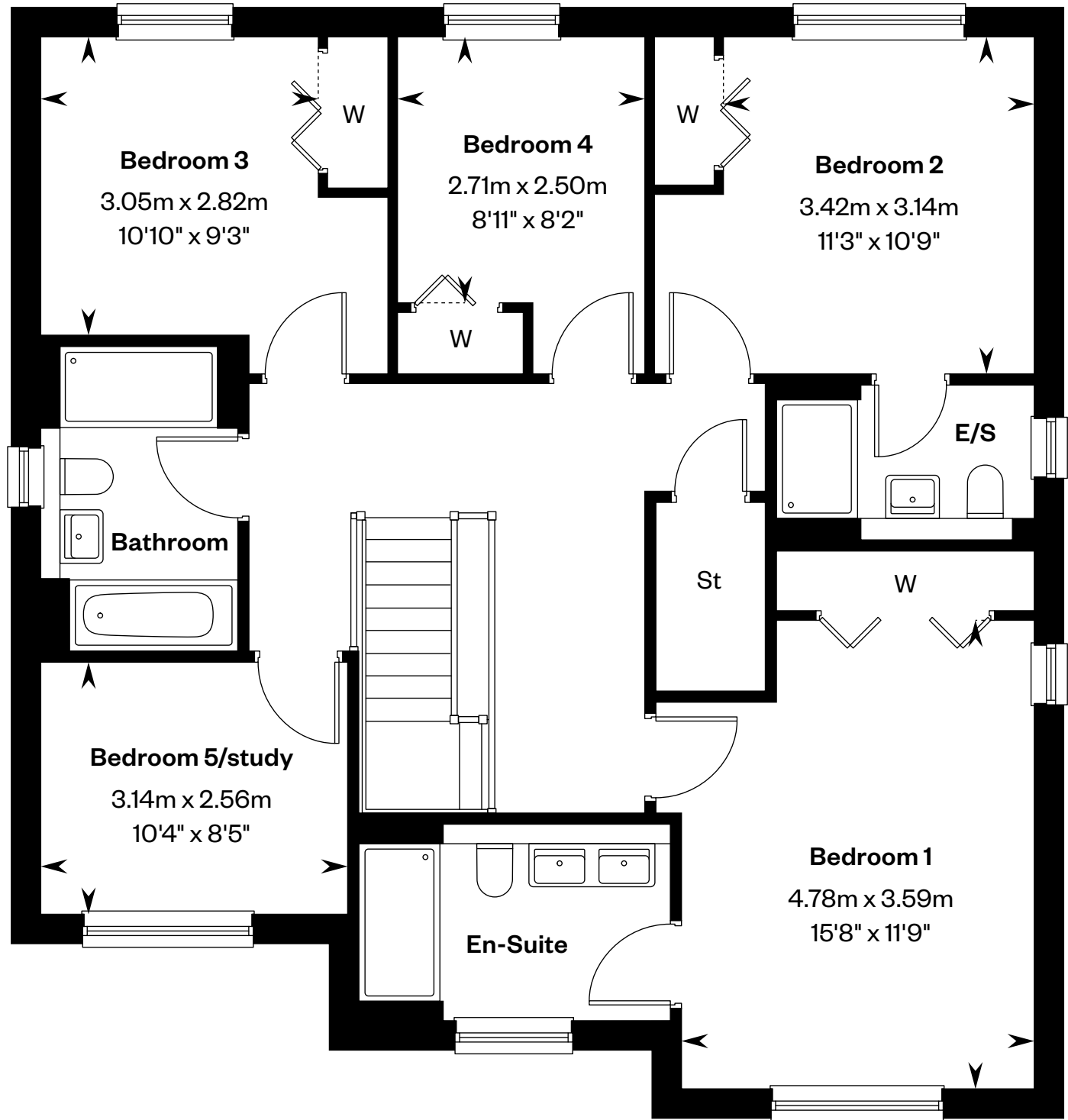
Plots 12, 14, 23 & 25 – handed



This is a Predicted Energy Assessment for properties that are incomplete. Once the property is completed, this rating will be updated and an official Energy Performance Certificate will be created for the property.



Ground floor



First floor

Please ask your Sales Consultant for further details. E/S: En-Suite. St: Store cupboard. W: Wardrobe.

IMPORTANT NOTICE TO CUSTOMERS: The Consumer Protection from Unfair Trading Regulations 2008. Cala Homes (West) Limited operates a policy of continual product development and the specifications outlined in this brochure are indicative only. The computer generated images and photographs do not necessarily represent the actual finishings/elevation or treatments, landscaping, furnishings and fittings at this development. Information contained is accurate at date of publication on 30.09.24. See the main brochure for the full Consumer Protection statement.



# The Evan

5 bedroom detached home

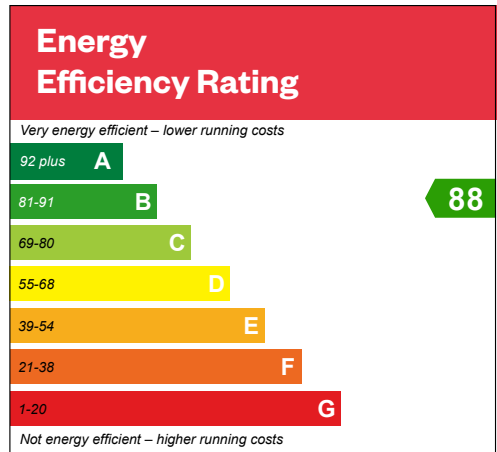




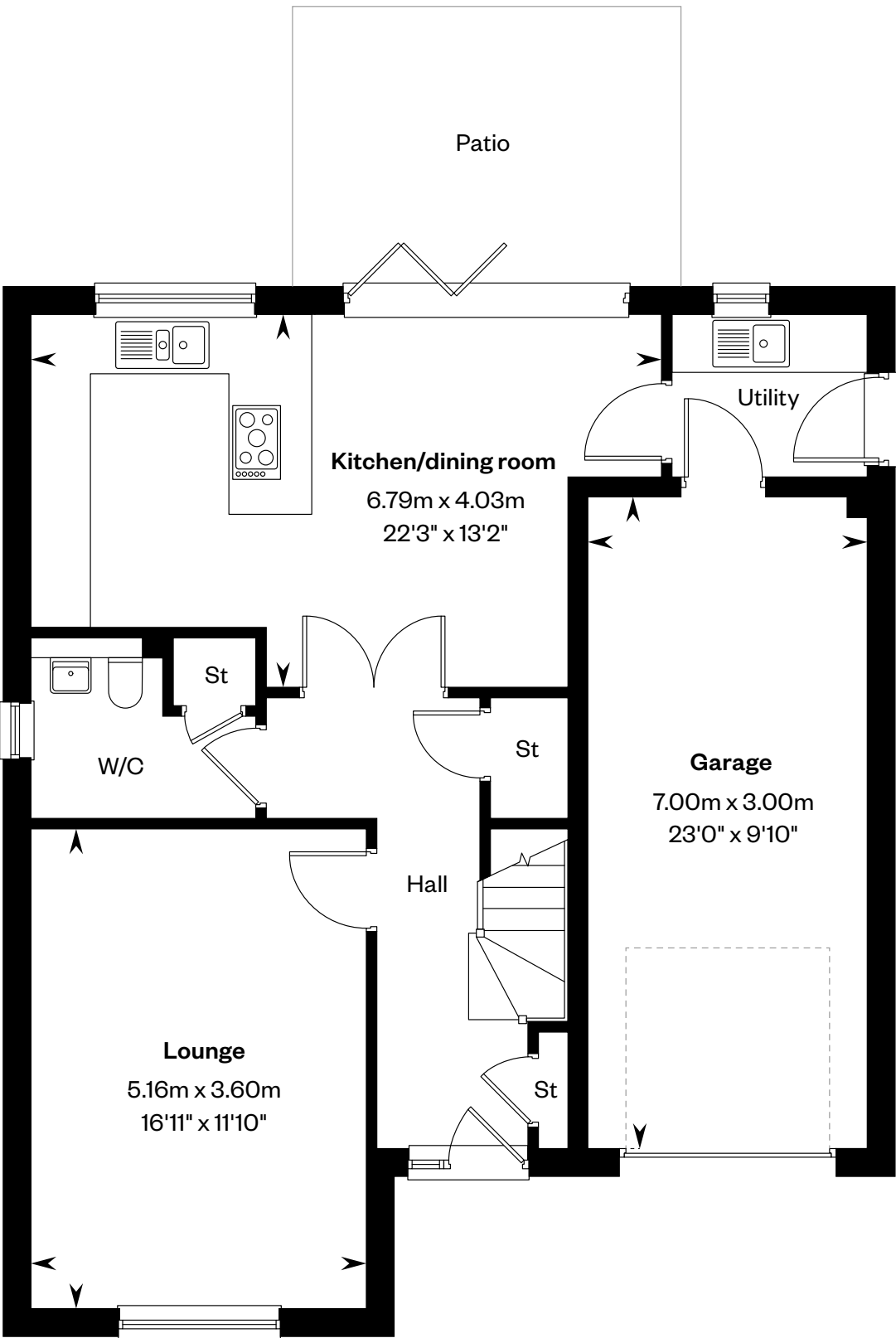
# The Evan

5 bedroom detached home

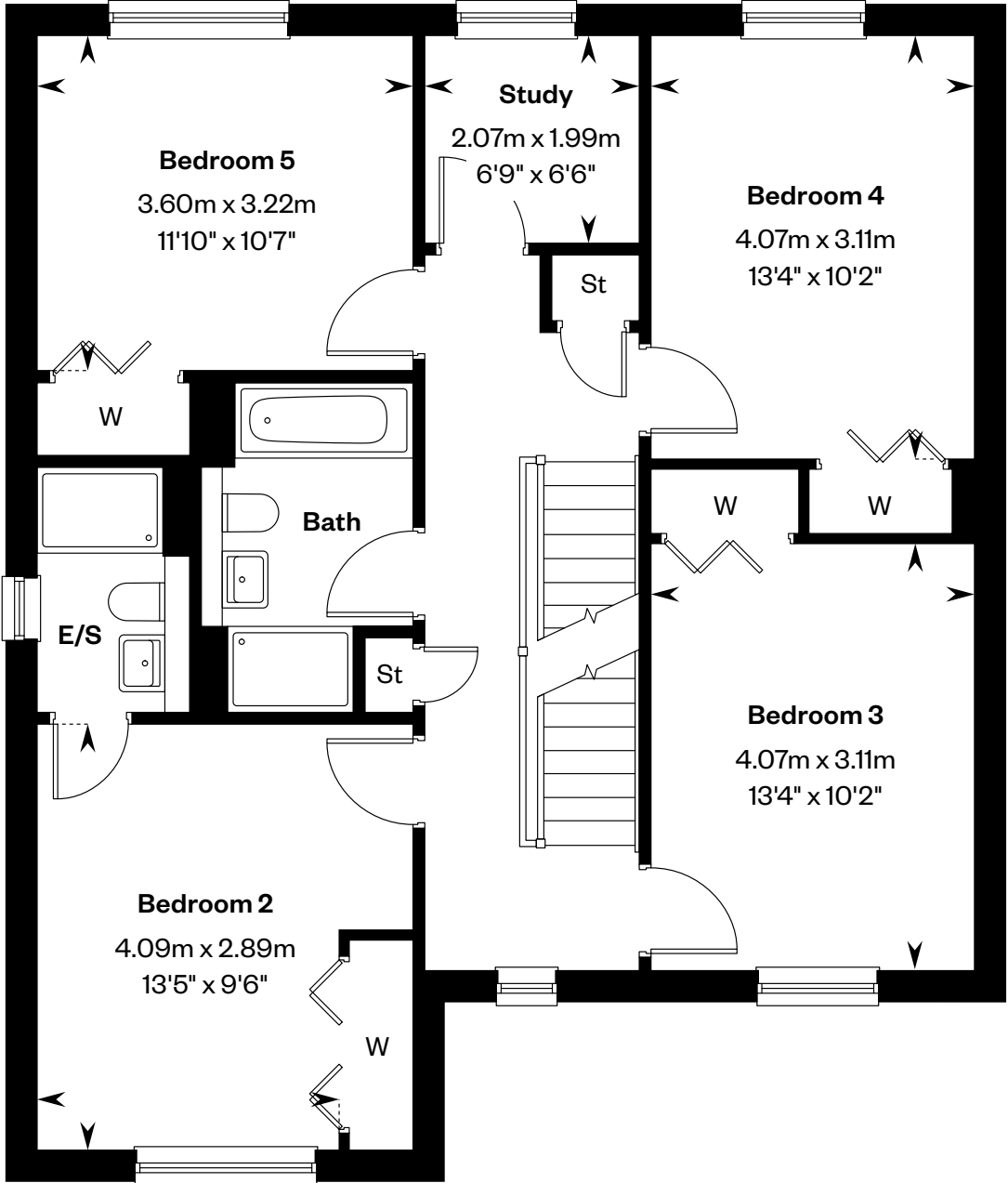
Plots 10, 18 & 21 – as shown



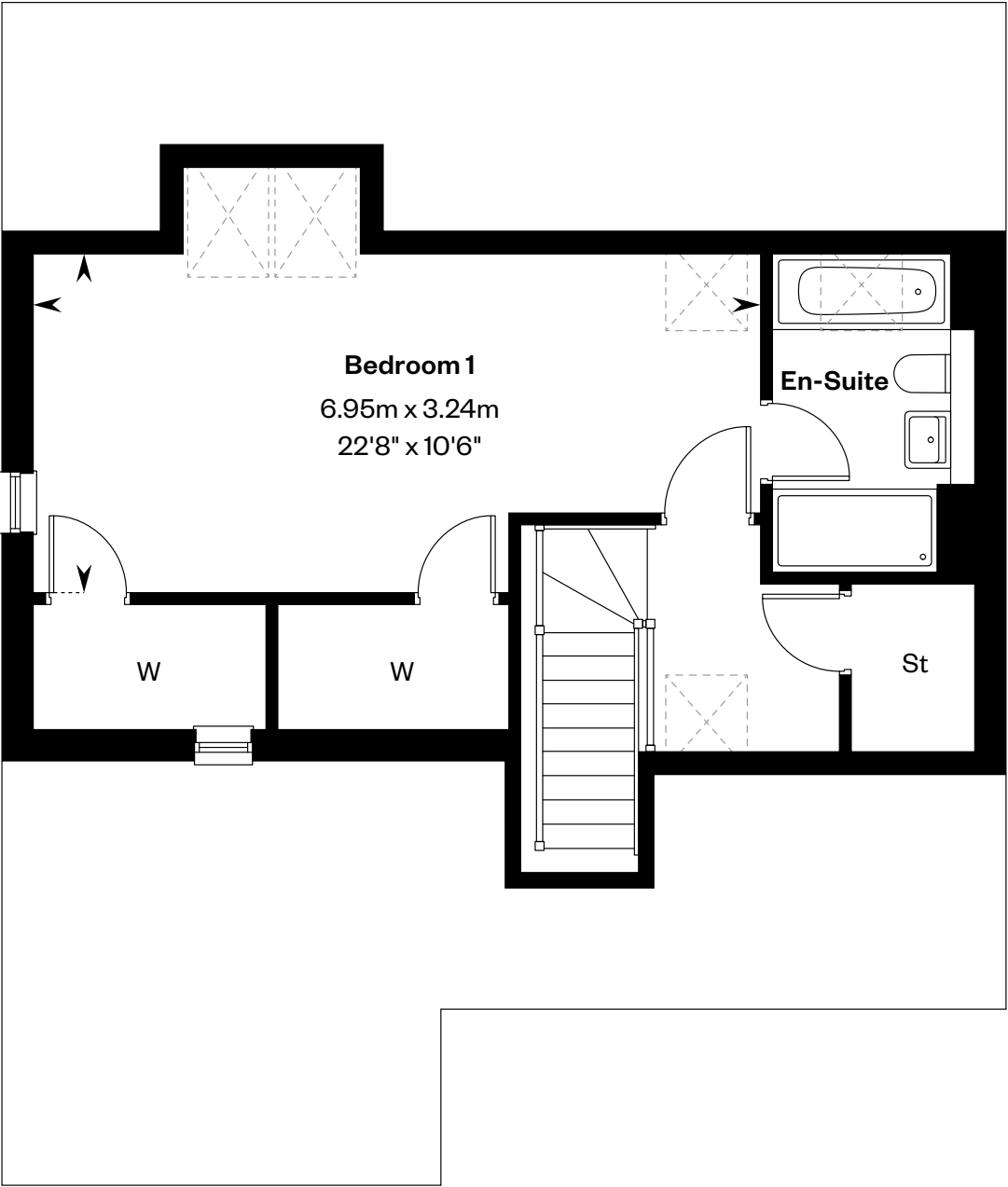
This is a Predicted Energy Assessment for properties that are incomplete. Once the property is completed, this rating will be updated and an official Energy Performance Certificate will be created for the property.



Ground floor



First floor



Second floor

Please ask your Sales Consultant for further details. E/S: En-Suite. St: Store cupboard. W: Wardrobe. ☒: Roof light/velux window.

IMPORTANT NOTICE TO CUSTOMERS: The Consumer Protection from Unfair Trading Regulations 2008. Cala Homes (West) Limited operates a policy of continual product development and the specifications outlined in this brochure are indicative only. The computer generated images and photographs do not necessarily represent the actual finishings/elevation or treatments, landscaping, furnishings and fittings at this development. Information contained is accurate at date of publication on 30.09.24. See the main brochure for the full Consumer Protection statement.



# Gordon IC

5 bedroom detached home

CALA



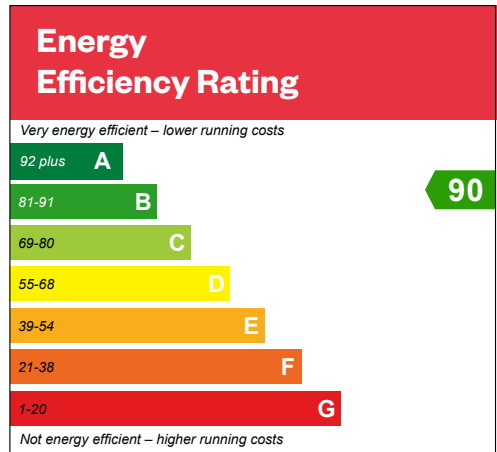
Computer generated image - A typical Gordon



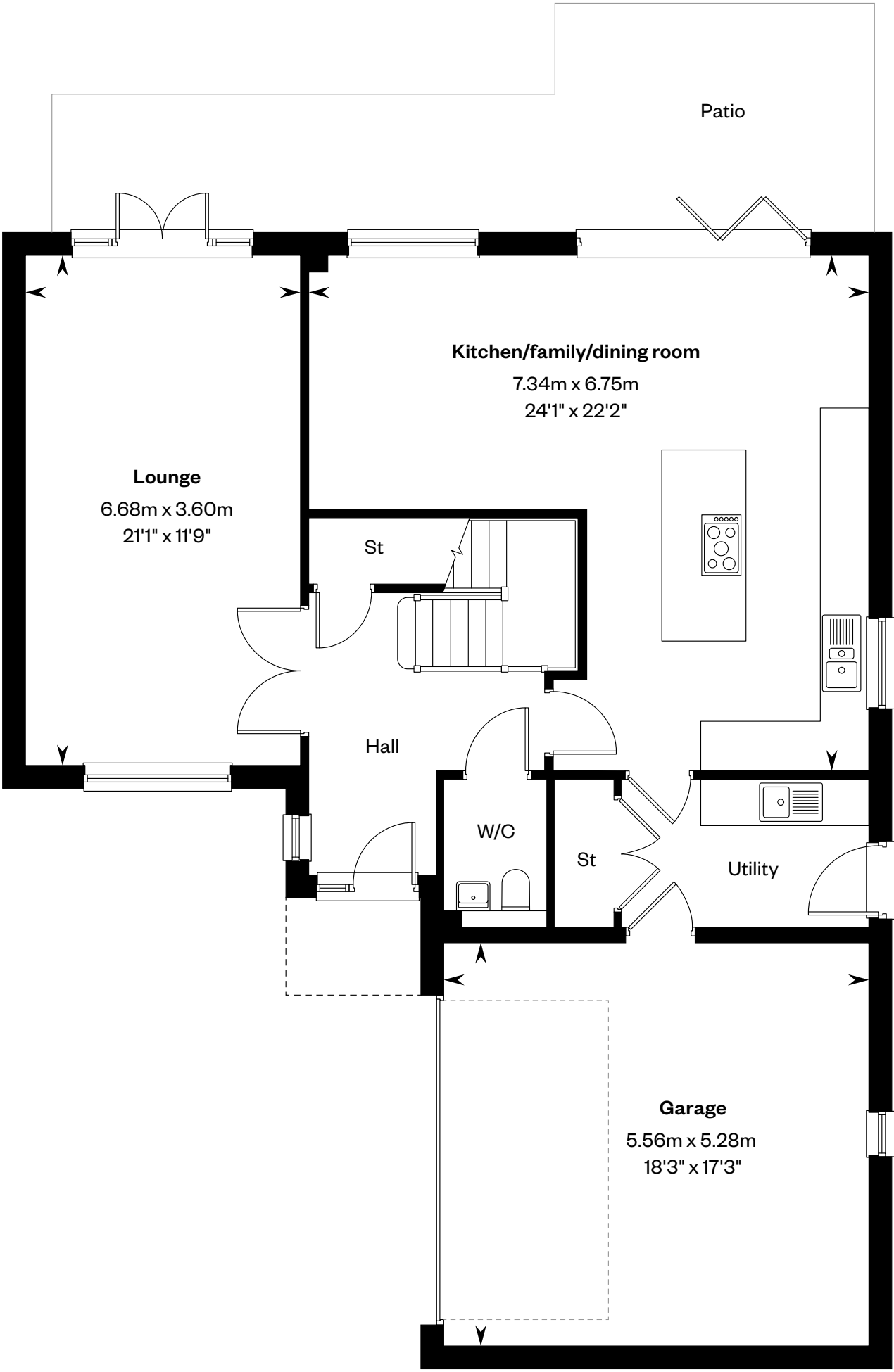
# The Gordon IC

5 bedroom detached home

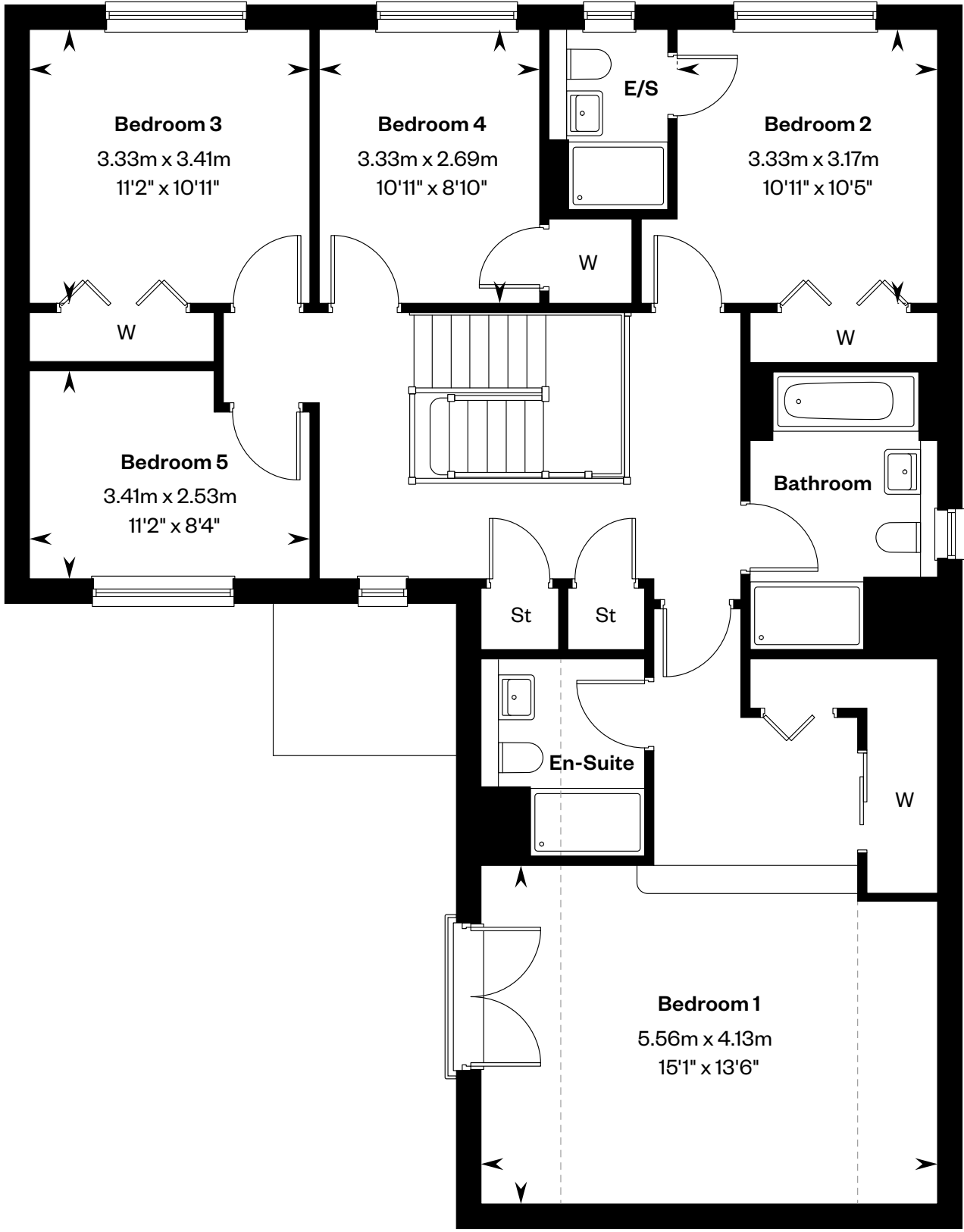
Plot 8 – as shown



This is a Predicted Energy Assessment for properties that are incomplete. Once the property is completed, this rating will be updated and an official Energy Performance Certificate will be created for the property.



Ground floor



First floor

Please ask your Sales Consultant for further details. E/S: En-Suite. St: Store cupboard. W: Wardrobe. ----: Dotted lines denote reduced head height.

IMPORTANT NOTICE TO CUSTOMERS: The Consumer Protection from Unfair Trading Regulations 2008. Cala Homes (West) Limited operates a policy of continual product development and the specifications outlined in this brochure are indicative only. The computer generated images and photographs do not necessarily represent the actual finishings/elevation or treatments, landscaping, furnishings and fittings at this development. Information contained is accurate at date of publication on 30.09.24. See the main brochure for the full Consumer Protection statement.



# The Gordon SE

5 bedroom detached home

CALA

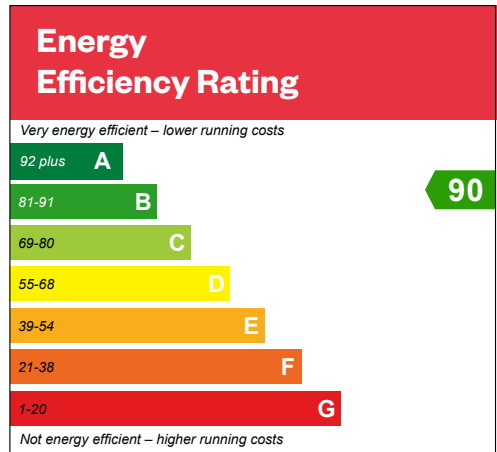




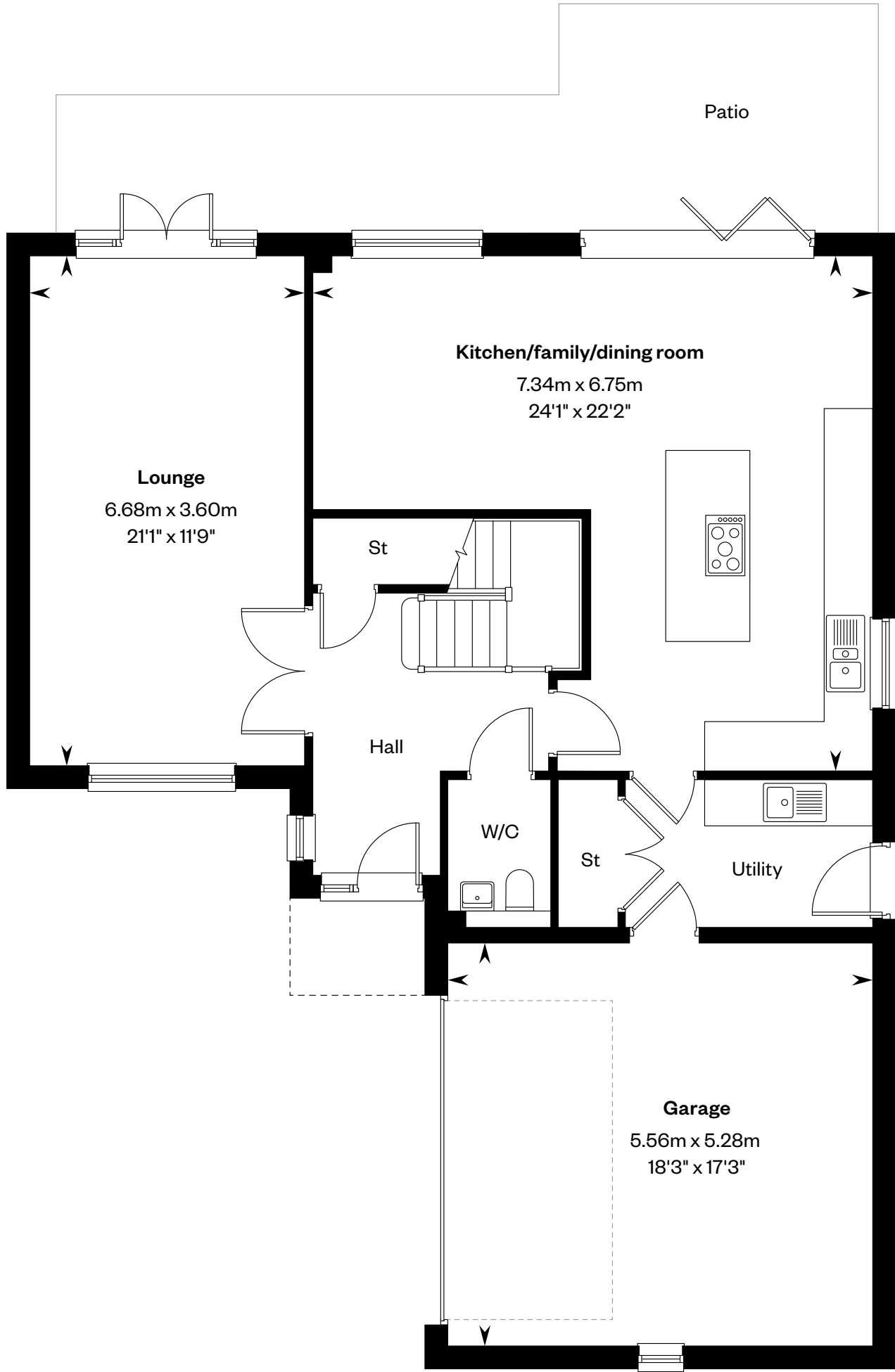
# The Gordon SE

5 bedroom detached home

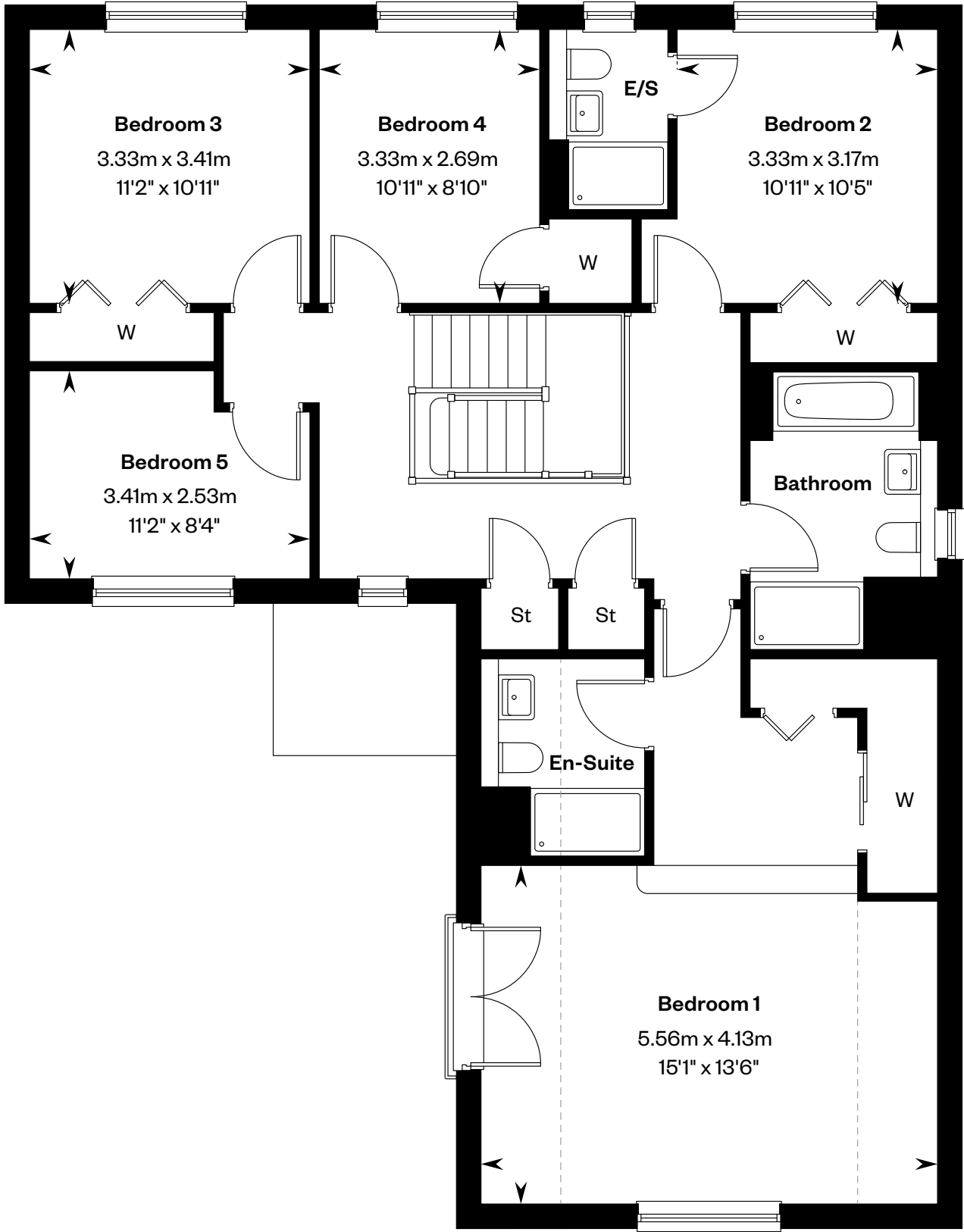
Plots 11 & 26 – handed



This is a Predicted Energy Assessment for properties that are incomplete. Once the property is completed, this rating will be updated and an official Energy Performance Certificate will be created for the property.



Ground floor



First floor

Please ask your Sales Consultant for further details. E/S: En-Suite. St: Store cupboard. W: Wardrobe. ----: Dotted lines denote reduced head height.

IMPORTANT NOTICE TO CUSTOMERS: The Consumer Protection from Unfair Trading Regulations 2008. Cala Homes (West) Limited operates a policy of continual product development and the specifications outlined in this brochure are indicative only. The computer generated images and photographs do not necessarily represent the actual finishings/elevation or treatments, landscaping, furnishings and fittings at this development. Information contained is accurate at date of publication on 30.09.24. See the main brochure for the full Consumer Protection statement.



# The Kennedy

5 bedroom detached home

CALA



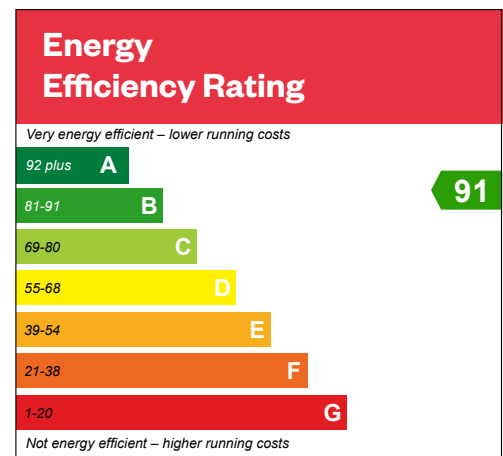
Computer Generated Image – A typical Kennedy (handed)



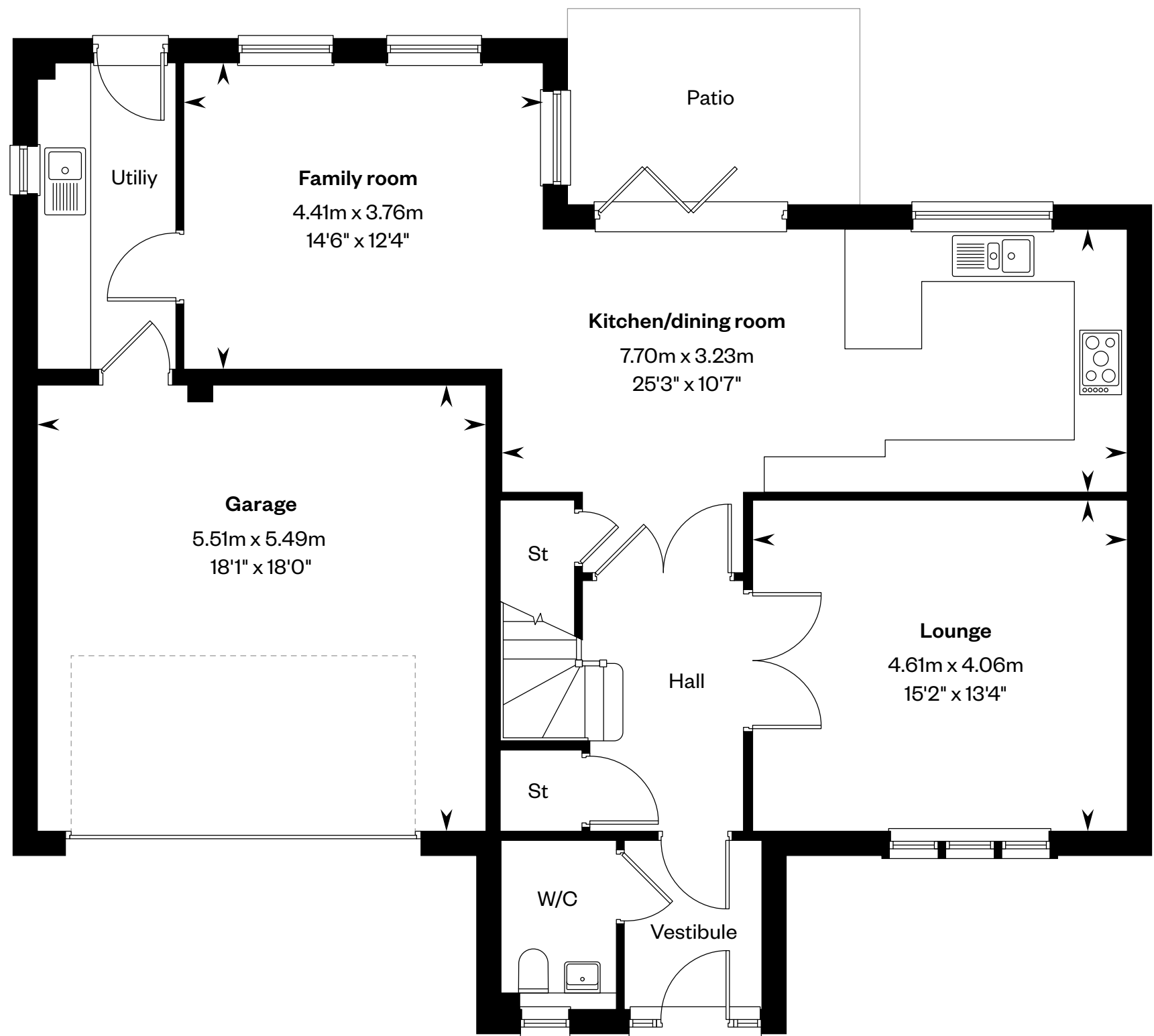
# The Kennedy

5 bedroom detached home

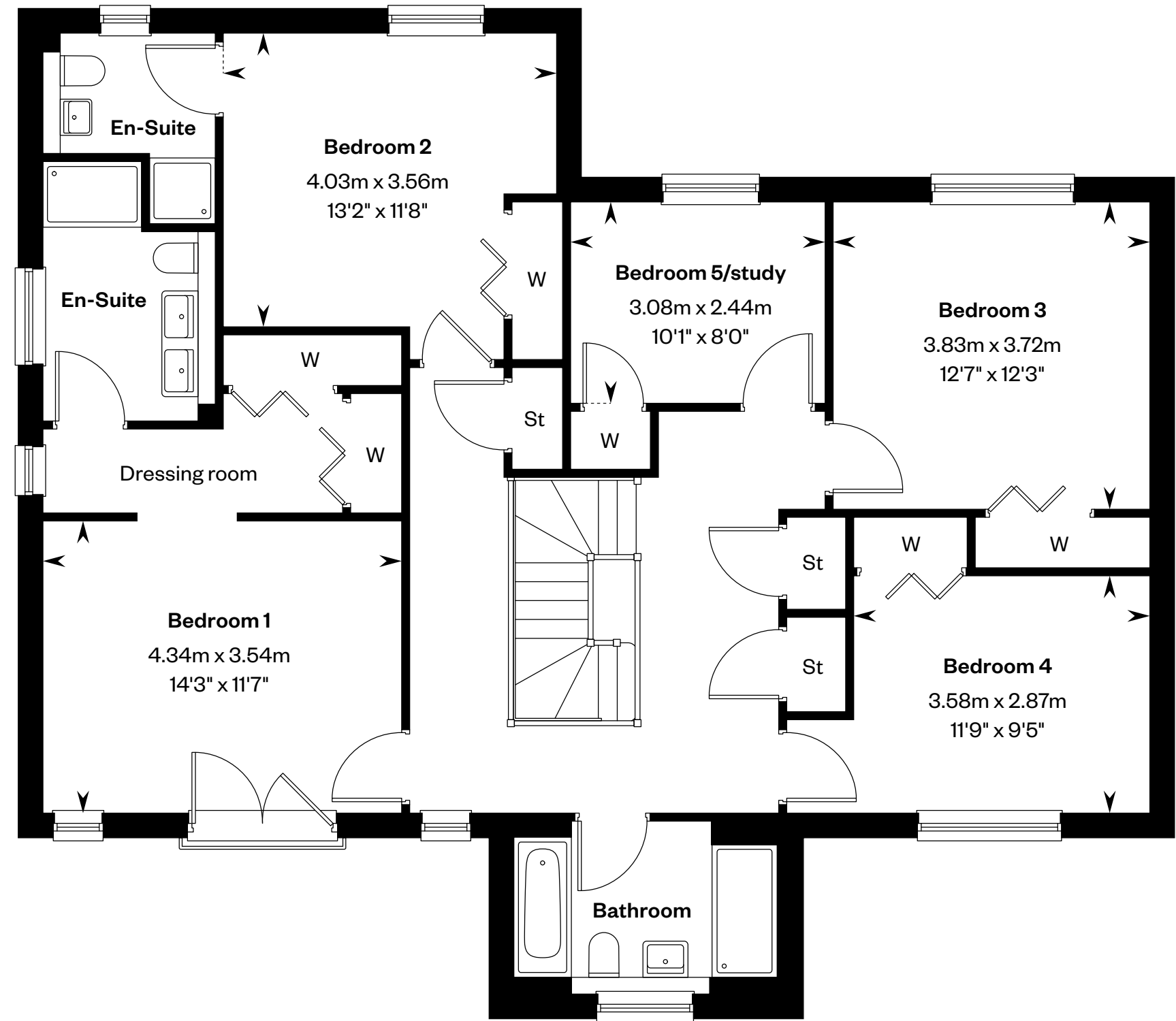
Plot 15 – handed



This is a Predicted Energy Assessment for properties that are incomplete. Once the property is completed, this rating will be updated and an official Energy Performance Certificate will be created for the property.



Ground floor



First floor

Please ask your Sales Consultant for further details. E/S: En-Suite. St: Store cupboard. W: Wardrobe.

IMPORTANT NOTICE TO CUSTOMERS: The Consumer Protection from Unfair Trading Regulations 2008. Cala Homes (West) Limited operates a policy of continual product development and the specifications outlined in this brochure are indicative only. The computer generated images and photographs do not necessarily represent the actual finishings/elevation or treatments, landscaping, furnishings and fittings at this development. Information contained is accurate at date of publication on 30.09.24. See the main brochure for the full Consumer Protection statement.



# The Lewis

5 bedroom detached home

CALA



Computer generated image - A typical Lewis

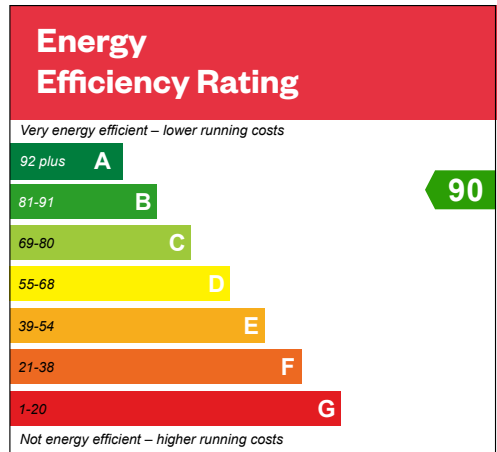


# The Lewis

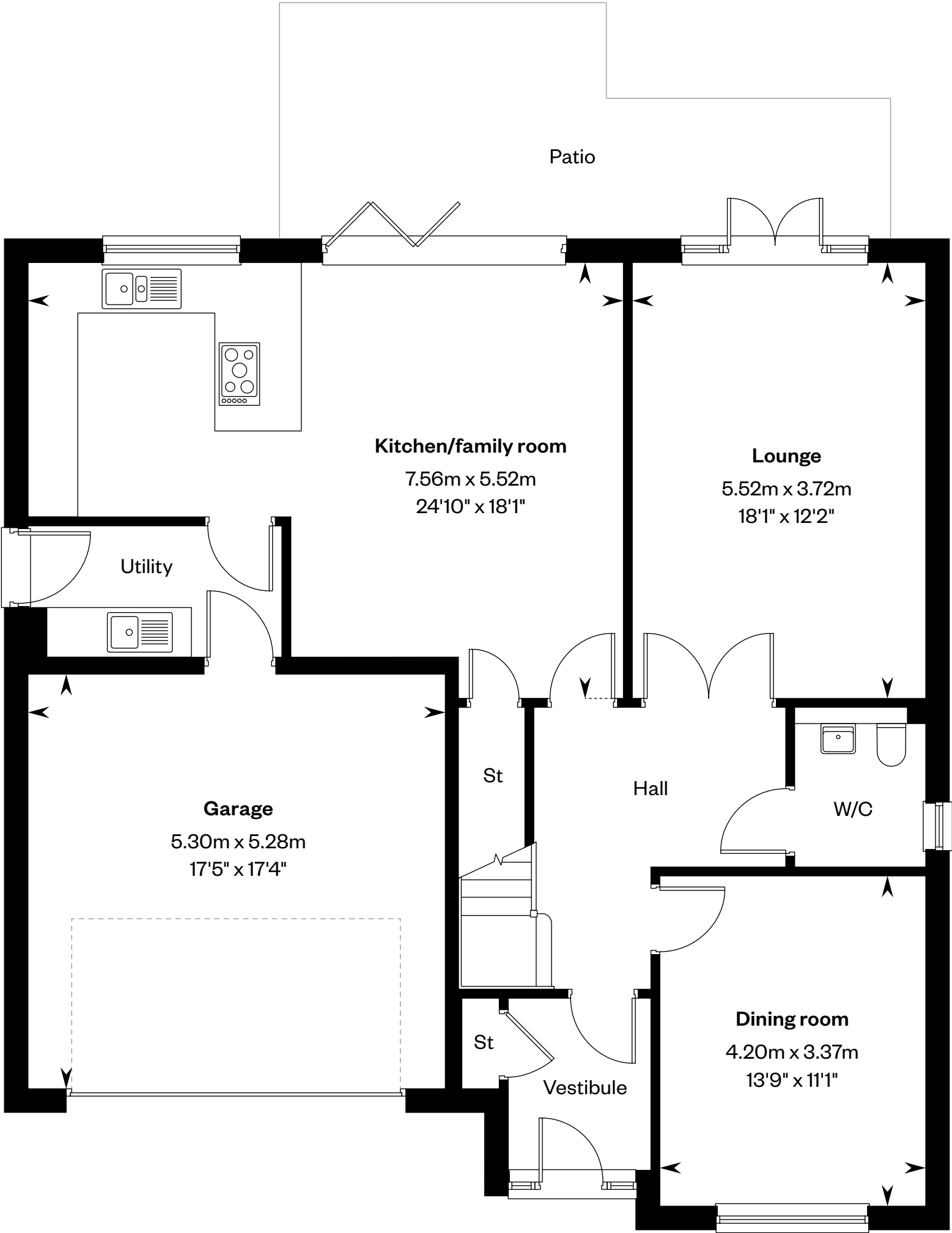
5 bedroom detached home

Plot 16 – as shown

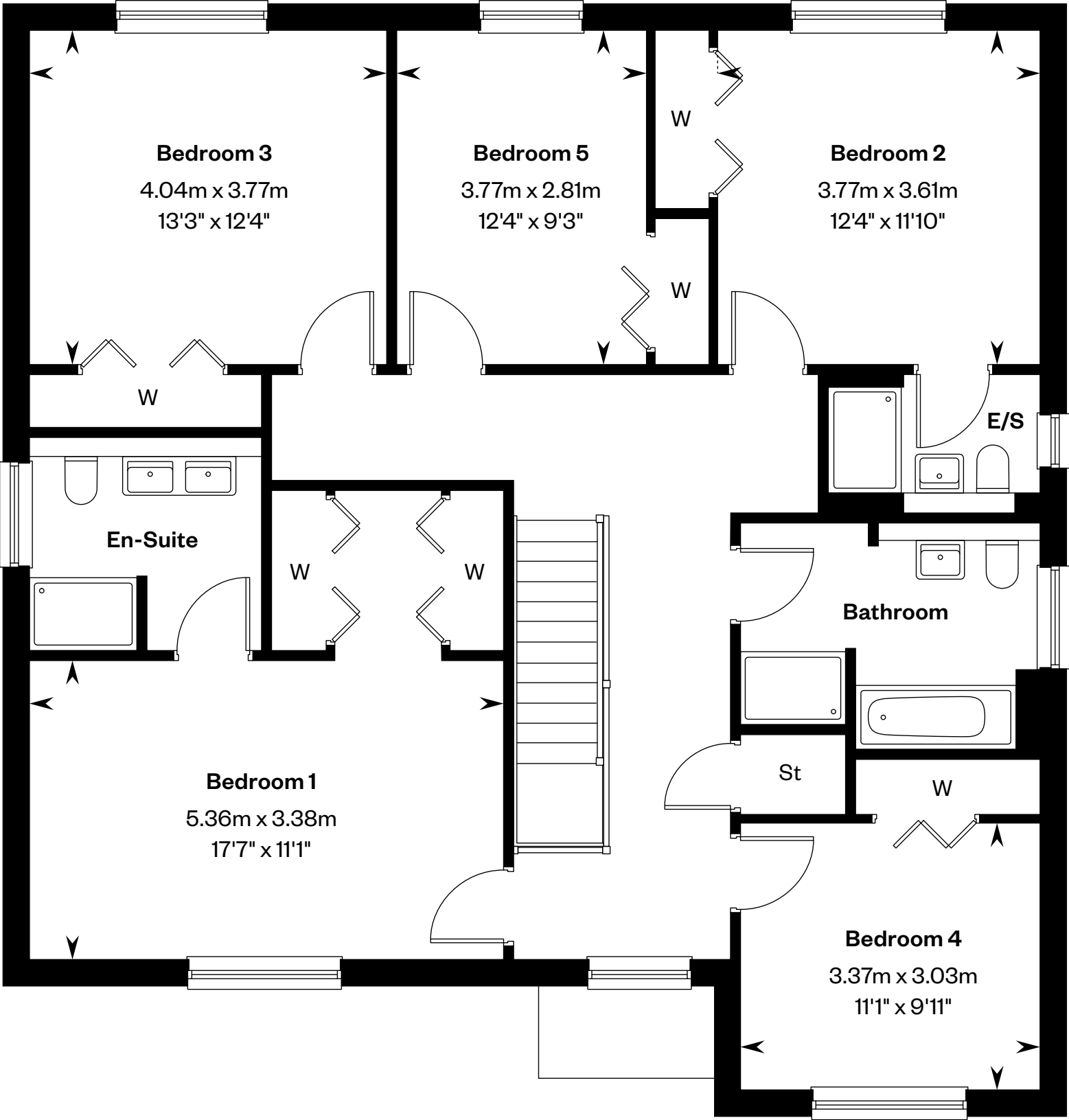
Plot 3 – handed



This is a Predicted Energy Assessment for properties that are incomplete. Once the property is completed, this rating will be updated and an official Energy Performance Certificate will be created for the property.



Ground floor



First floor

Please ask your Sales Consultant for further details. E/S: En-Suite. St: Store cupboard. W: Wardrobe.

IMPORTANT NOTICE TO CUSTOMERS: The Consumer Protection from Unfair Trading Regulations 2008. Cala Homes (West) Limited operates a policy of continual product development and the specifications outlined in this brochure are indicative only. The computer generated images and photographs do not necessarily represent the actual finishings/elevation or treatments, landscaping, furnishings and fittings at this development. Information contained is accurate at date of publication on 30.09.24. See the main brochure for the full Consumer Protection statement.



# The Logan

5 bedroom detached home

CALA



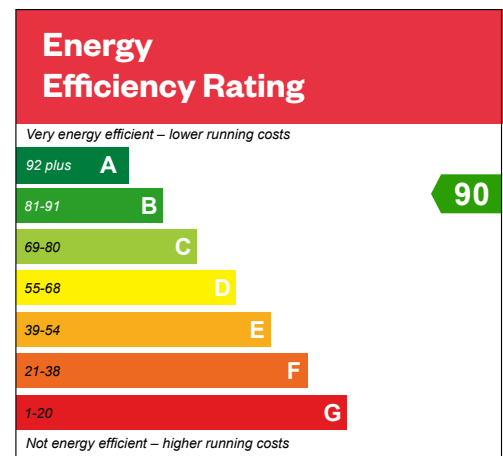
Computer Generated Image - A typical Logan



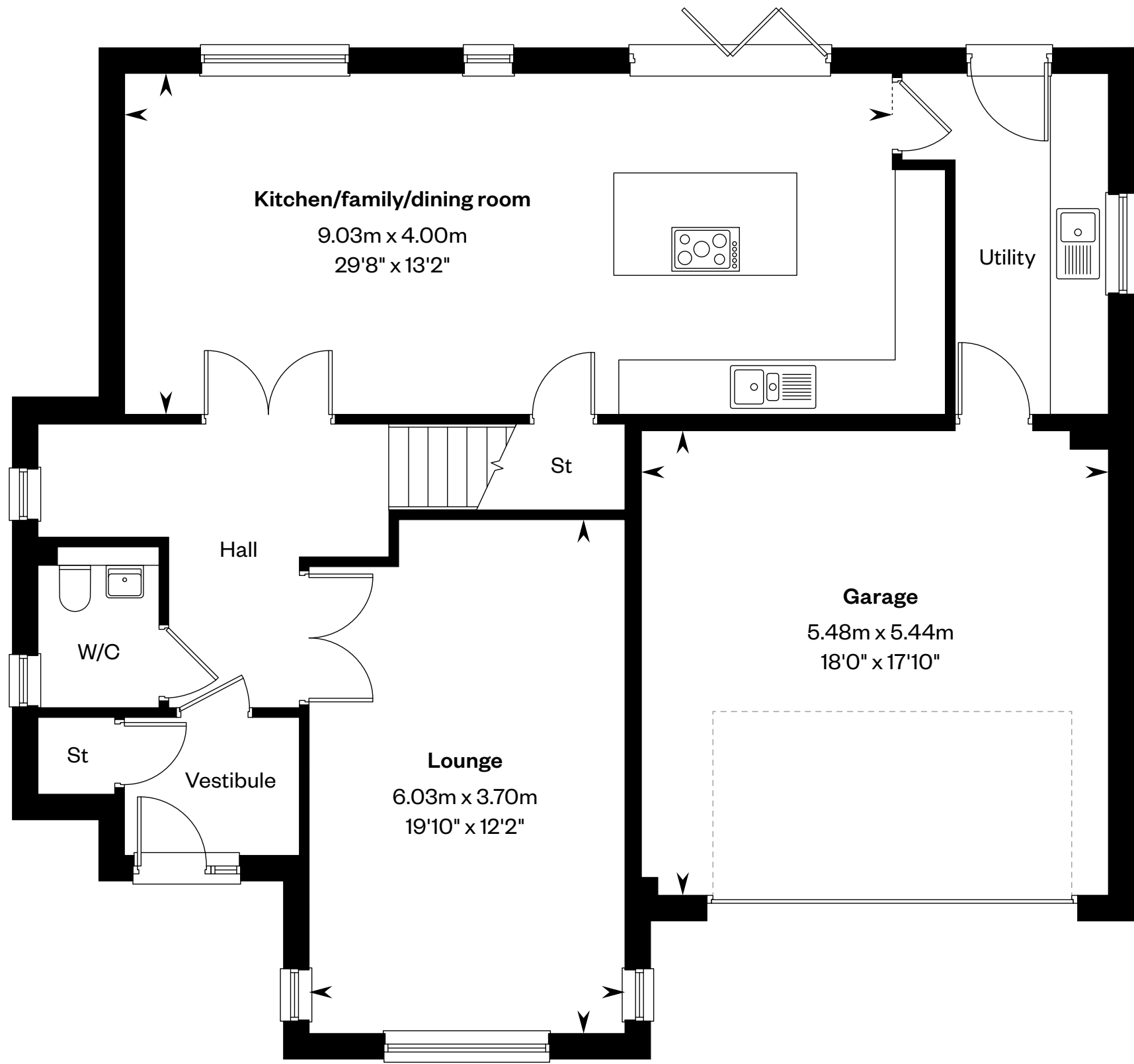
# The Logan

5 bedroom detached home

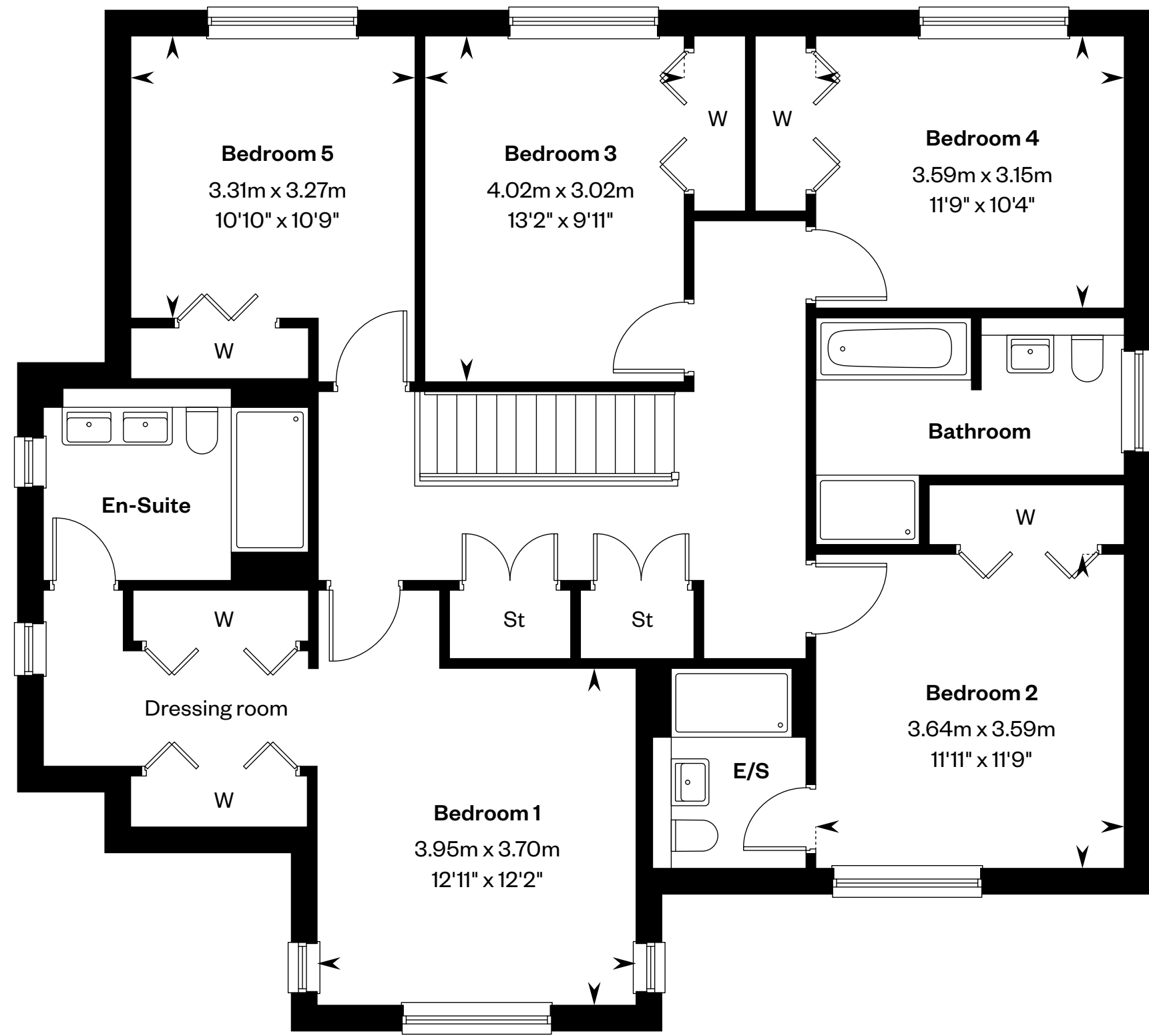
Plot 19 – handed



This is a Predicted Energy Assessment for properties that are incomplete. Once the property is completed, this rating will be updated and an official Energy Performance Certificate will be created for the property.



Ground floor



First floor

Please ask your Sales Consultant for further details. E/S: En-Suite. St: Store cupboard. W: Wardrobe.

IMPORTANT NOTICE TO CUSTOMERS: The Consumer Protection from Unfair Trading Regulations 2008. Cala Homes (West) Limited operates a policy of continual product development and the specifications outlined in this brochure are indicative only. The computer generated images and photographs do not necessarily represent the actual finishings/elevation or treatments, landscaping, furnishings and fittings at this development. Information contained is accurate at date of publication on 30.09.24. See the main brochure for the full Consumer Protection statement.