

THIS IS LIFE WITH MORE STYLE  
THIS IS QUINARY ROW AT ORCHID PARK



DISCOVER THE FRASER HOMESTYLE



## VILLAGE LIFE HAS NEVER BEEN SO CONVENIENT

Rich in character, the Victorian village of Lenzie has grown to become a desirable commuter haven just six miles from Glasgow city centre. With Lenzie railway station on the Glasgow to Edinburgh mainline, every cosmopolitan delight is within easy reach. Here you can soak up the rolling surroundings of the Campsie Fells, with a choice of shops, pubs, restaurants, parks and leisure facilities at your convenience, either in Lenzie itself or in neighbouring Kirkintilloch. Education is well provided for too with highly regarded Lenzie Academy. So whether you're searching for rural relaxation or the urban excitement of nearby Glasgow, Lenzie enjoys the best of both worlds, making it the ideal location to bring up your family.



# QUINARY ROW AT ORCHID PARK



The above development layout is not drawn to scale and is for general guidance only. Road layouts, pathways and external treatments may differ. Please confirm the most up-to-date details with our Sales Consultant prior to reservation.



## THE FRASER HOMESTYLE

Quinary Row at Orchid Park enjoys a prime position in the development and is home to CALA's elegant four bedroom Fraser homestyle. Offering you the height of modern, flexible living from the open plan kitchen and family room, to the en suite bedrooms or private home office, there's plenty of light and space to reflect your contemporary lifestyle. This could be the dream home you've been searching for.







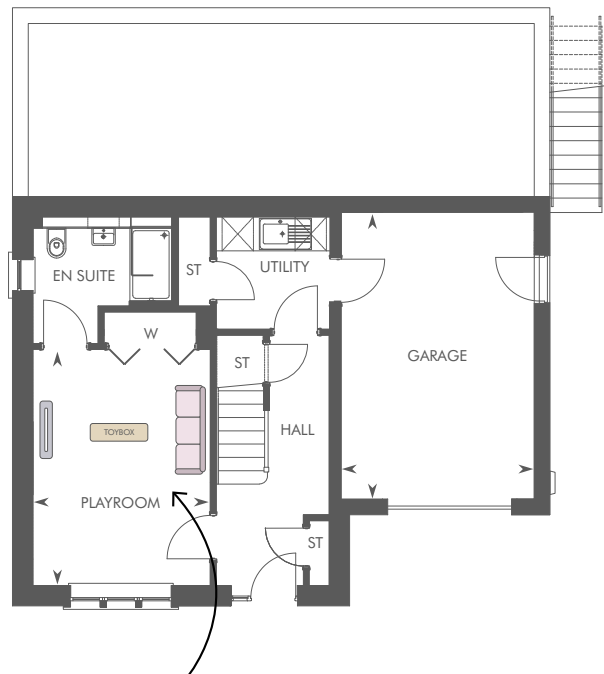
## DISCOVER THE FRASER, PERFECT FOR GROWING FAMILIES

Life for a young family can be full of fun and games and can take over the whole house. Set over three floors, The Fraser allows you to create distinct areas to separate day from night, living your life with a special place for the little ones.

Evenings bring well-deserved peace and quiet. As the children sleep soundly a level above, you are free to relax in the sanctuary of the lounge before retiring to your space in the sumptuous main bedroom.



# A HOME THAT GROWS WITH YOU



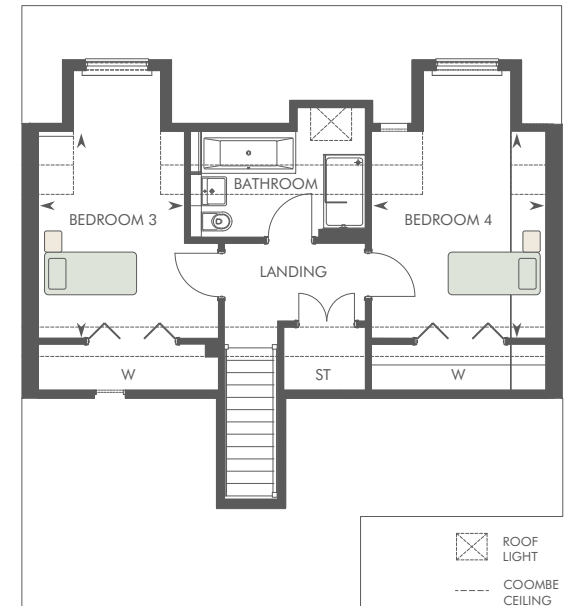
Kids can thrive in their dedicated play area while keeping toys and games in one place

GROUND FLOOR



The main bedroom, with dressing area and sumptuous en suite, will soon become your personal escape

FIRST FLOOR



SECOND FLOOR

Patio sizes are indicative. ST: Store cupboard. W: Wardrobe. Please ask your Sales Consultant for further details.



## LARGER FAMILY? THE FRASER WILL SUIT YOU TOO

Want to have family time together and the luxury of extra room, so that everyone can have their much needed space and privacy too?

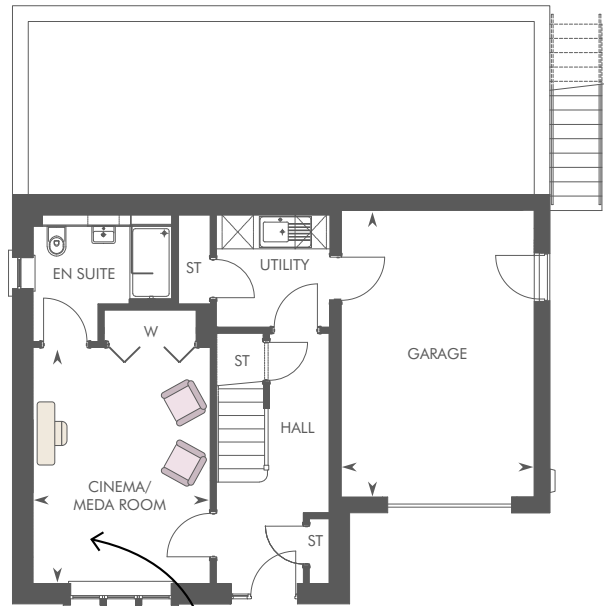
Pre-teens and teenagers will love having a media room on the ground floor all to themselves.

The formal lounge can either be a peaceful haven for two or the perfect social space, complemented by an open plan kitchen/dining room where you can get together as a family or entertain guests.



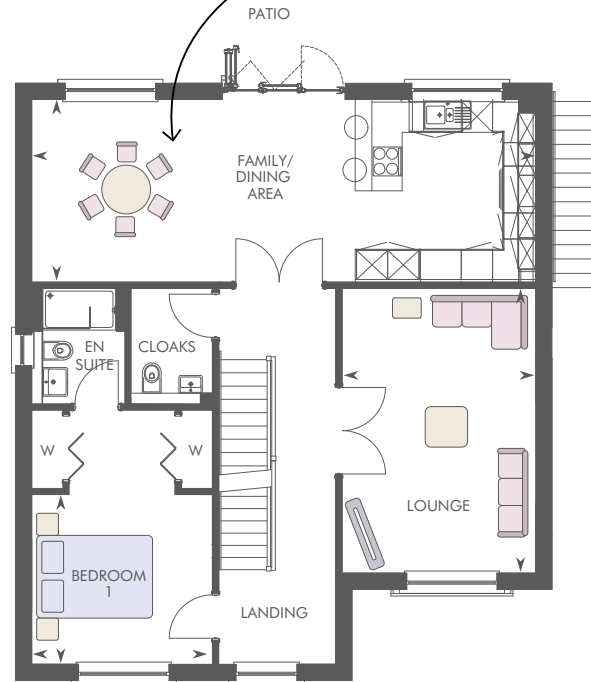
# LIVE THE DREAM, LOVE THE SPACE

This open plan family/dining area removes all barriers to fun nights in with family or friends

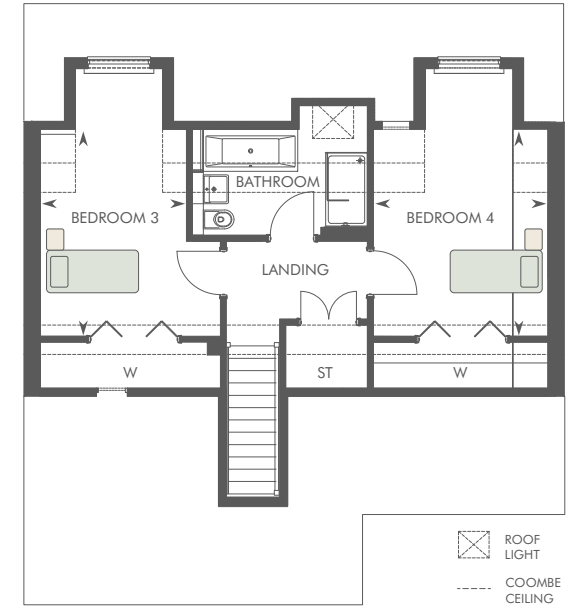


Bring out the popcorn and curl up with your favourite movie with your very own home cinema/media room

GROUND FLOOR



FIRST FLOOR



SECOND FLOOR

Patios are designed to plot specific requirements and may vary in size. Please ask your Sales Consultant for further details. ST: Store cupboard. W: Wardrobe.





## CHOOSE THE FRASER TO DOWNSIZE WITHOUT COMPROMISE

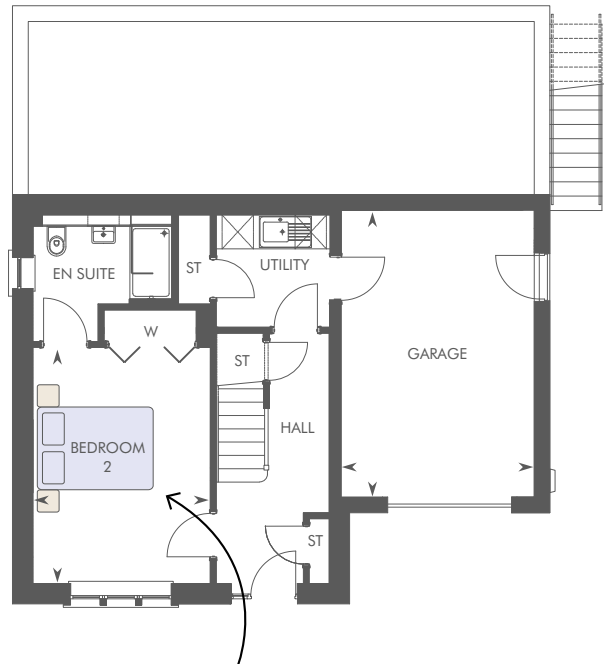
Looking for the perfect space for two that can adapt easily when friends and family come to stay? The Fraser could be the answer.

How you take contemporary living to a whole new level is your choice. From the beautiful lounge to the large kitchen, with dining area and family room opening onto the patio and rear garden, spend the perfect family day at home or entertain friends either indoors or out.

Flexible living means you can create discrete places for relaxing or indulgence, a home office or media room, and yet still have the bedrooms ready for when you have guests.

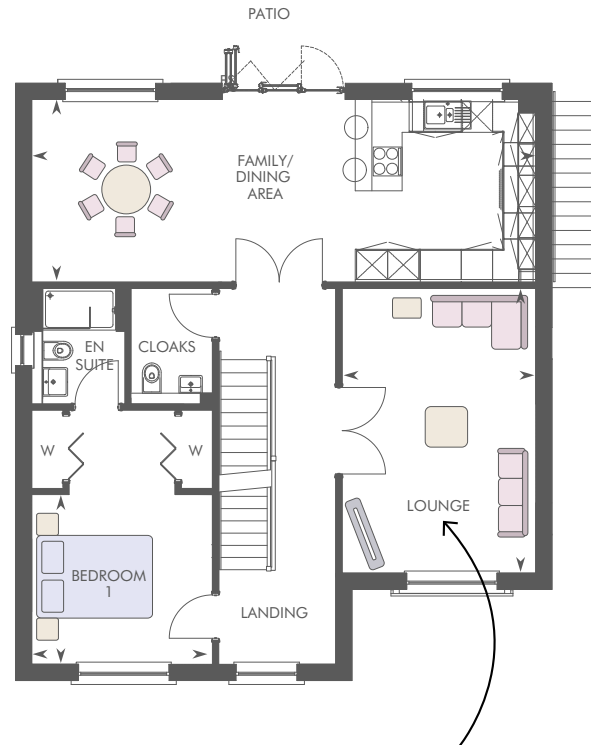


# A WHOLE NEW LIFESTYLE AWAITS



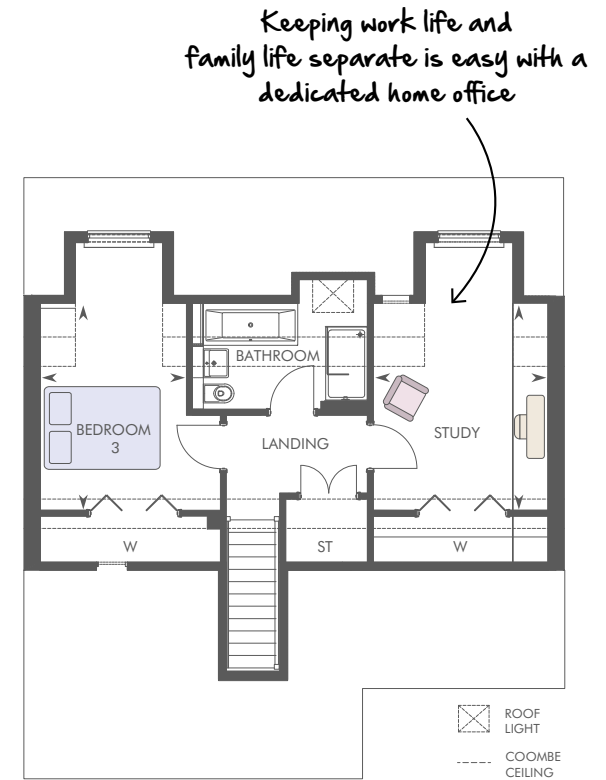
Expecting guests?  
You'll love the idea of a self-contained suite for family or friends

GROUND FLOOR



From family celebrations to festive fun, just imagine the memories that can be made in this elegant lounge

FIRST FLOOR



SECOND FLOOR

## A HIGHER SPECIFICATION AS STANDARD

### KITCHENS

Busy homes make bigger demands, so we've taken the pressure off meal times with Siemens hobs and large oven spaces. Friends or family gathering? Cater for even the largest dinner party and, with a built in Siemens dishwasher, clean up in no time.

We all have our 'Where can we put that?' moments. Our utility room provides every family with the perfect hideaway.



### BEDROOMS

With generous proportions the main bedroom can be your go-to sanctuary. The addition of luxurious en suites put an end to morning rush hour queues for the family bathroom.

### BATHROOMS

Wake up with a shower or wind down in a relaxing bath in your Laufen designer bathroom, complete with full-height Porcelanosa tiling, chrome towel warmers and practical storage space.

### EXTERNAL

As soon as the sun appears our outdoor spaces are good to go. Last minute BBQ's are no problem with a generous patio, external taps and 1.8m privacy fence.

### SECURITY

It should come as no surprise to learn that your safety and security are our priority and that's why every home comes with an alarm system, mains-wired smoke detectors and battery operated CO detectors.



CALA HOMES  
QUINARY ROW AT ORCHID PARK  
BLACKLANDS PLACE  
LENZIE  
G66 5NL  
T: 0141 319 8582  
ORCHIDPARK@CALA.CO.UK  
CALA.CO.UK



IMPORTANT NOTICE TO CUSTOMERS: The Consumer Protection from Unfair Trading Regulations 2008. CALA Homes (West) Limited operates a policy of continual product development and the specifications outlined in this brochure are indicative only. CALA reserves the right to implement minor changes to the sizes and specifications shown on any plans or drawings in this brochure without warning. Where alterations to the design, construction or materials to be used in the construction of the property would materially alter the internal floor space, appearance or market value of the property, we will ensure that these changes are communicated to potential purchasers. Whilst these particulars are prepared with all due care for the convenience of intending purchasers, the information is intended as a guide. The computer generated images and photographs do not necessarily represent the actual finishings/elevation or treatments, landscaping, furnishings and fittings at this development. Floor plans, dimensions and specifications are correct at the time of print. The illustrated location map is a general guide only. Please note that distances and timings referred to in this brochure are approximate and sourced from Google Maps and thetrainline.com. For information relating to weather in the area of this development, please refer to the Meteorological Office ([www.metoffice.gov.uk](http://www.metoffice.gov.uk)). Nothing contained in this brochure shall constitute or form part of any contract. Information contained in this brochure is accurate at time of upload on 07.12.20. CALA (West) Limited, registered in Scotland company number SC222577. Registered office: Johnstone House, 52-54 Rose Street, Aberdeen AB10 1HA: Agent of CALA Management Limited.