



The Bargower

4 bedroom detached home



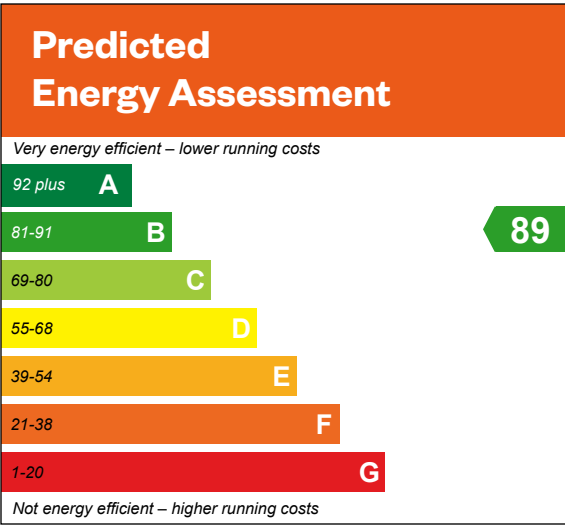
Computer Generated Image - The Bargower

The Bargower

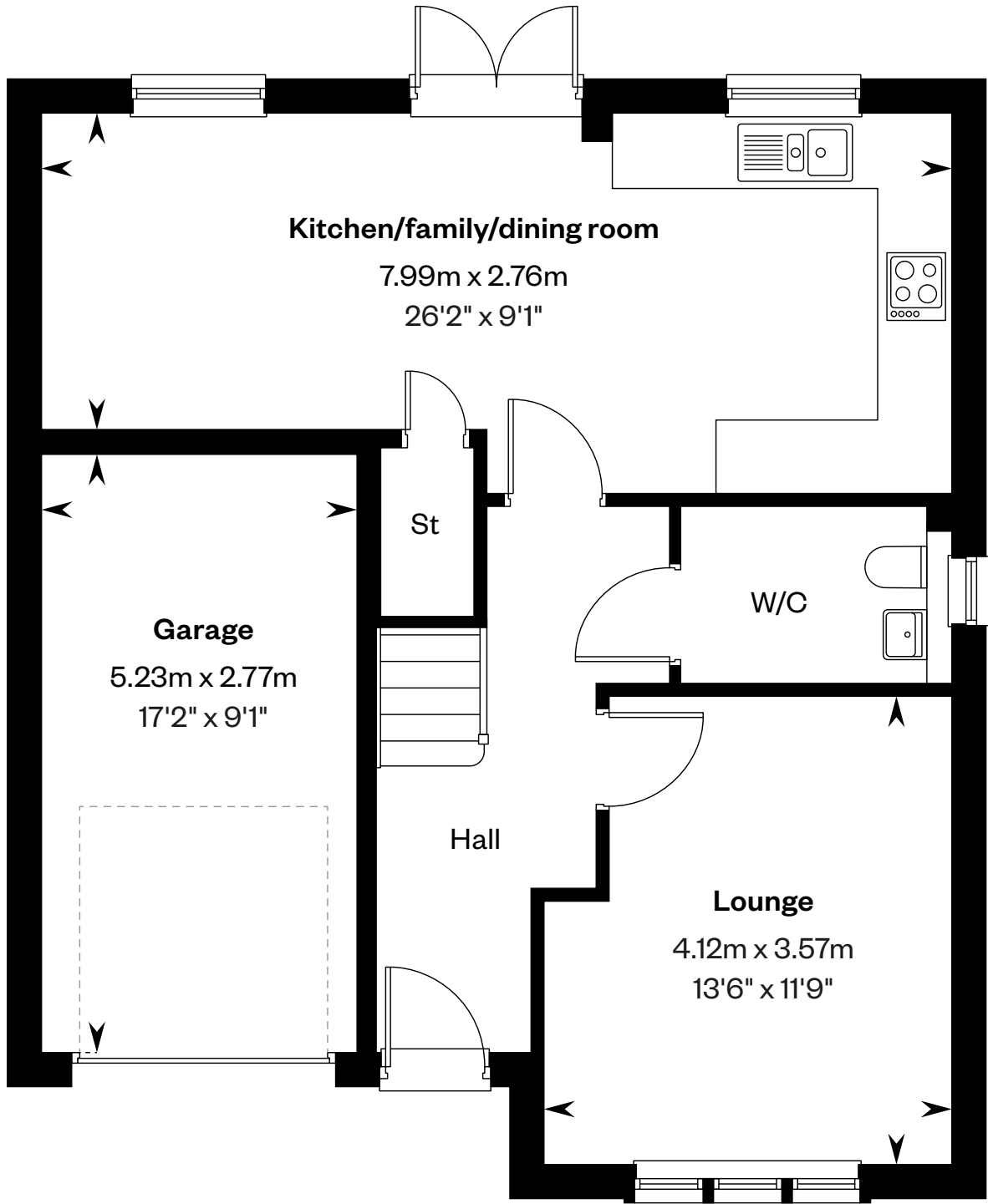
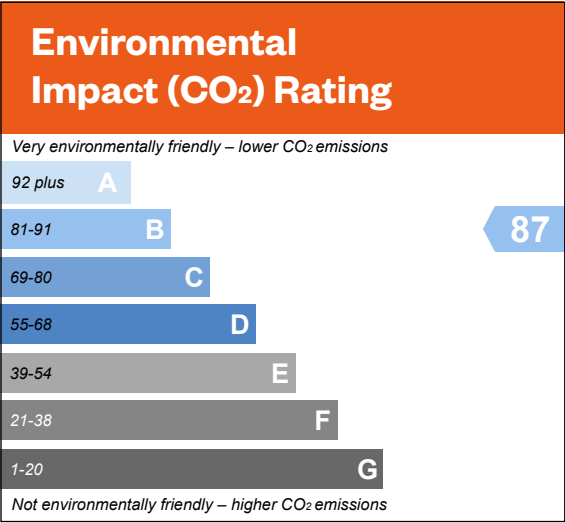
4 bedroom detached home

Plots 215, 226, 250, 260, 262, 266 & 269 – as shown

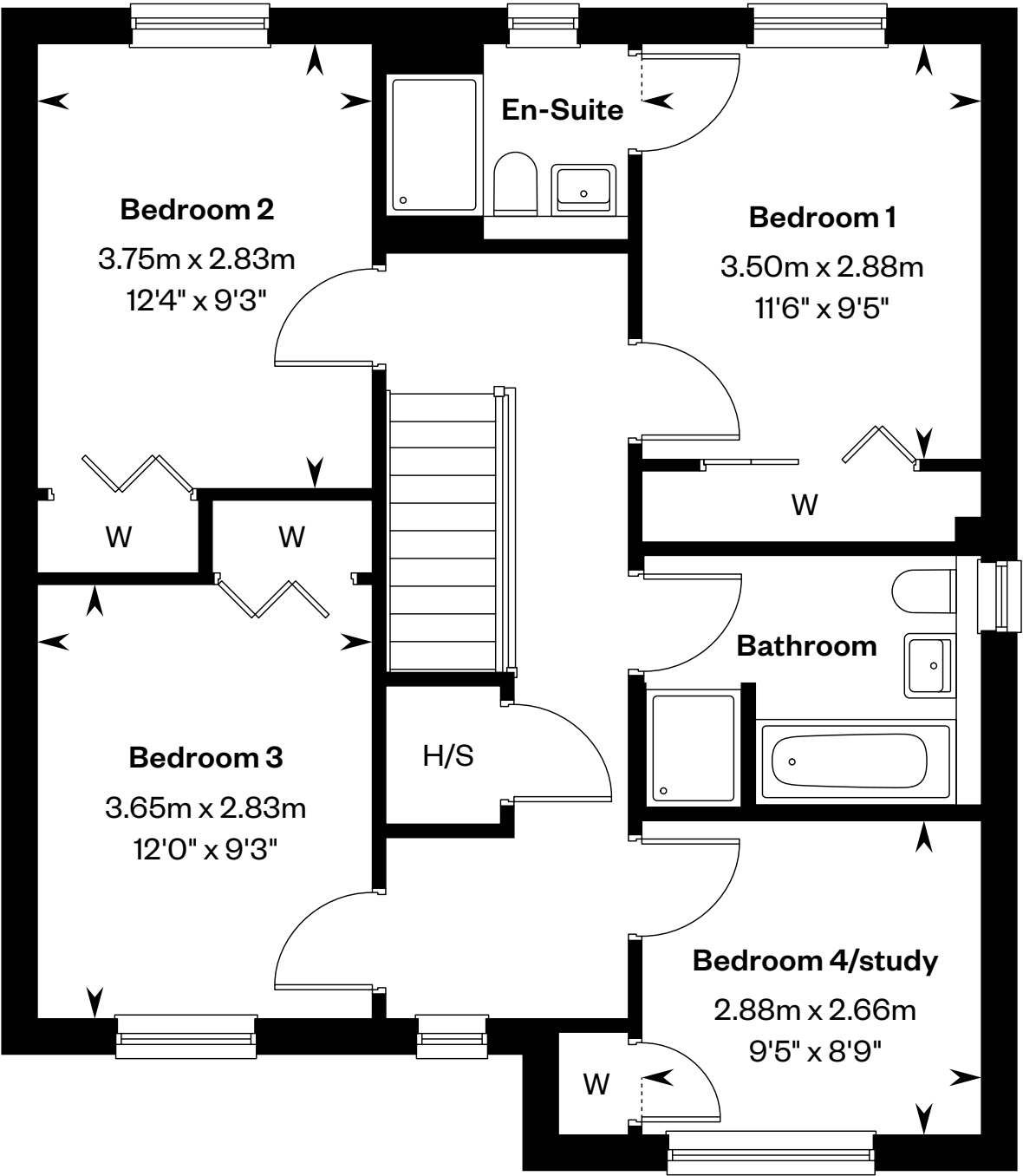
Plots 203, 230, 232, 238 & 246 – handed



This is a Predicted Energy Assessment for properties that are incomplete. Once the property is completed, this rating will be updated and an official Energy Performance certificate will be created for the property.



Ground floor



First floor

H/S: Heating source cupboard. St: Store cupboard. W: Wardrobe.

IMPORTANT NOTIOE TO CUSTOMERS: The Consumer Protection from Unfair Trading Regulations 2008. Cala Homes (North) Limited operates a policy of continual product development and the specifications outlined in this brochure are indicative only. The computer generated images and photographs do not necessarily represent the actual finishings/elevation or treatments, landscaping, furnishings and fittings at this development. Information contained is accurate at date of publication on 24.09.25. See the main brochure for the full Consumer Protection statement.



The Barrie

4 bedroom detached home



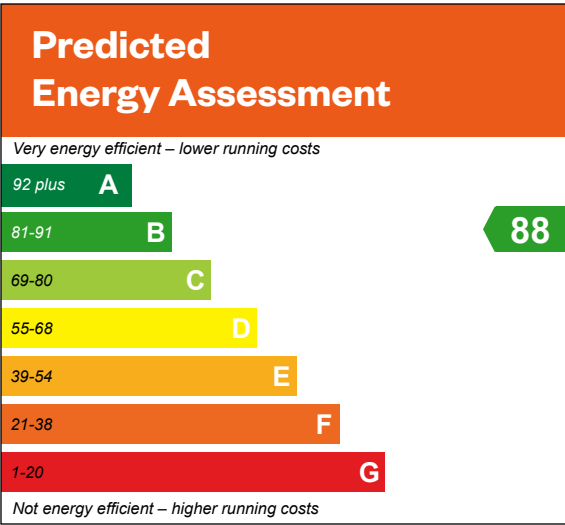
Computer Generated Image - The Barrie

The Barrie

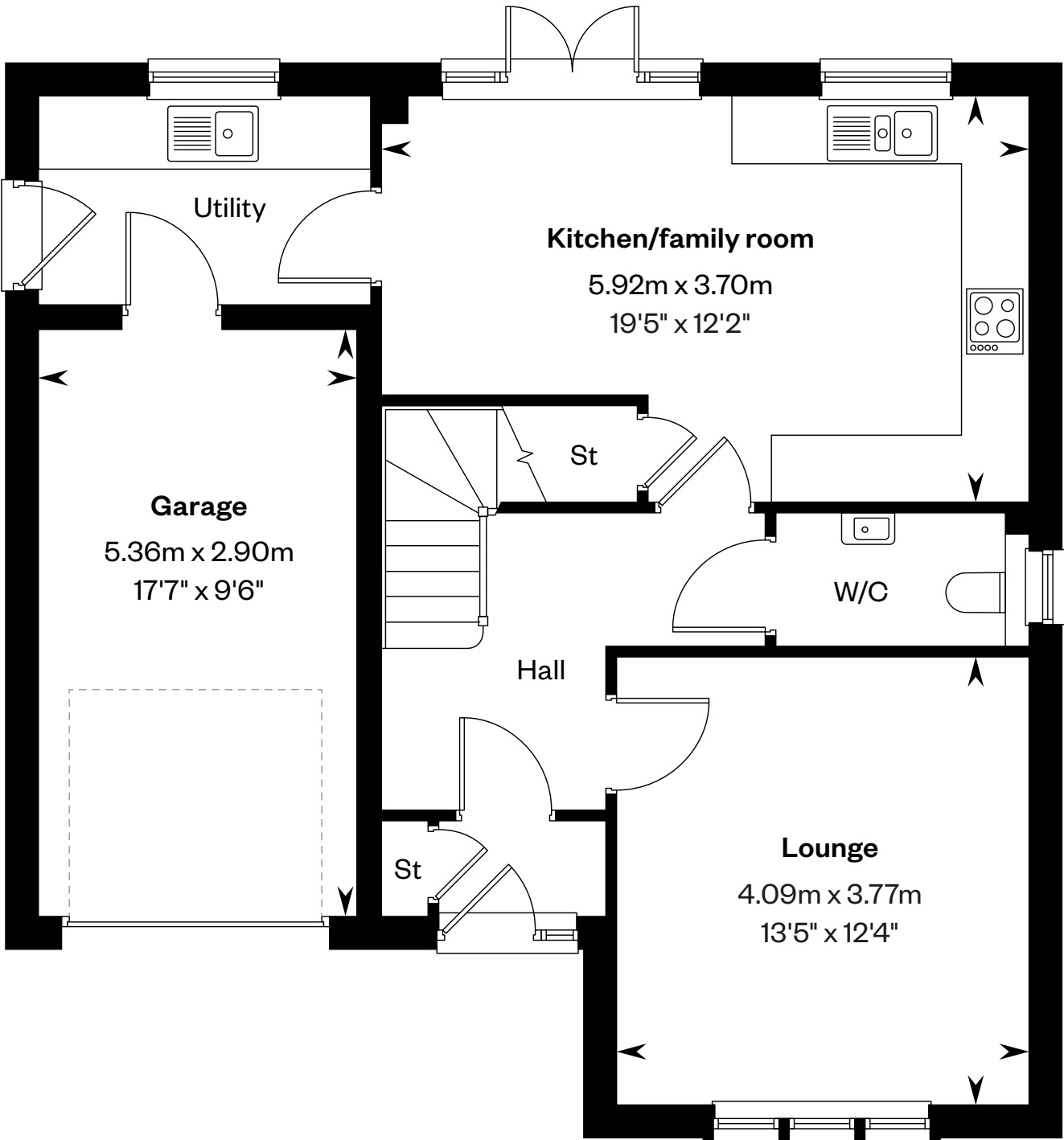
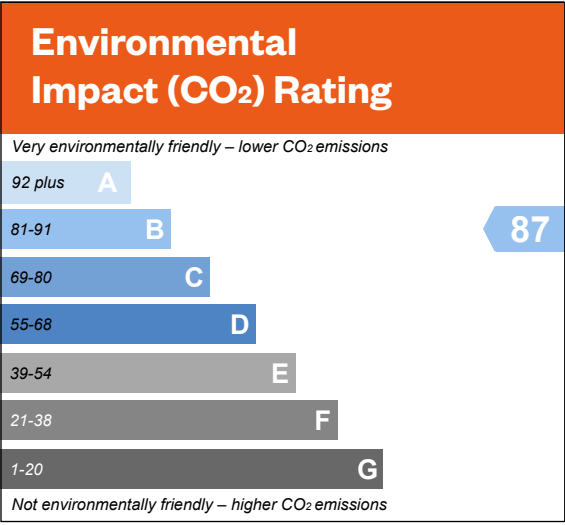
4 bedroom detached home

Plots 211, 233, 236, 247, 255, 258, 261, 263, 264 & 268 – as shown

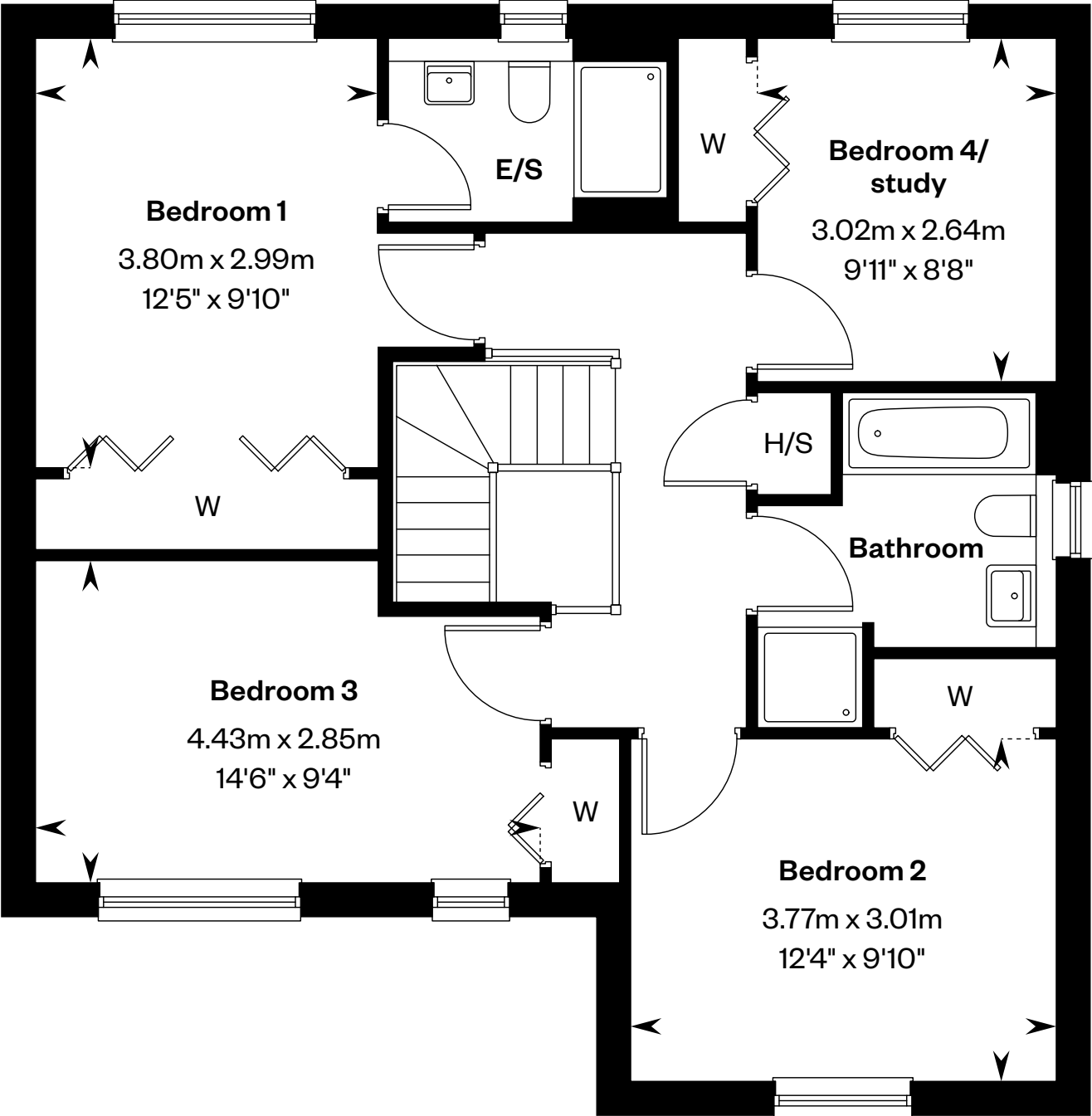
Plots 202 & 227 – handed



This is a Predicted Energy Assessment for properties that are incomplete. Once the property is completed, this rating will be updated and an official Energy Performance certificate will be created for the property.



Ground floor



First floor

E/S: En-Suite. H/S: Heating source cupboard. St: Store cupboard. W: Wardrobe.

IMPORTANT NOTIOE TO CUSTOMERS: The Consumer Protection from Unfair Trading Regulations 2008. Cala Homes (North) Limited operates a policy of continual product development and the specifications outlined in this brochure are indicative only. The computer generated images and photographs do not necessarily represent the actual finishings/elevation or treatments, landscaping, furnishings and fittings at this development. Information contained is accurate at date of publication on 24.09.25. See the main brochure for the full Consumer Protection statement.



The Bryce

4 bedroom detached home

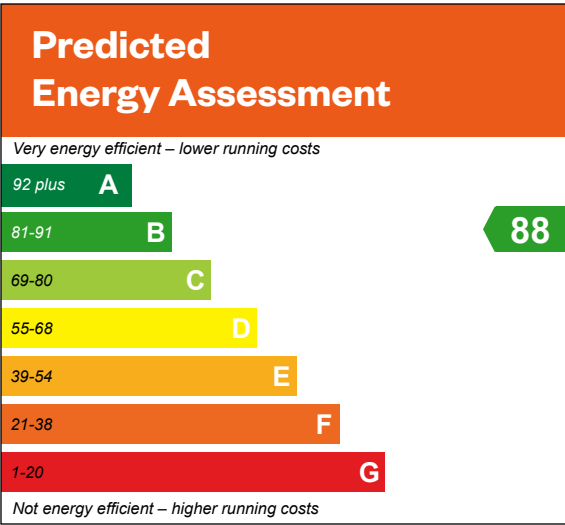


The Bryce

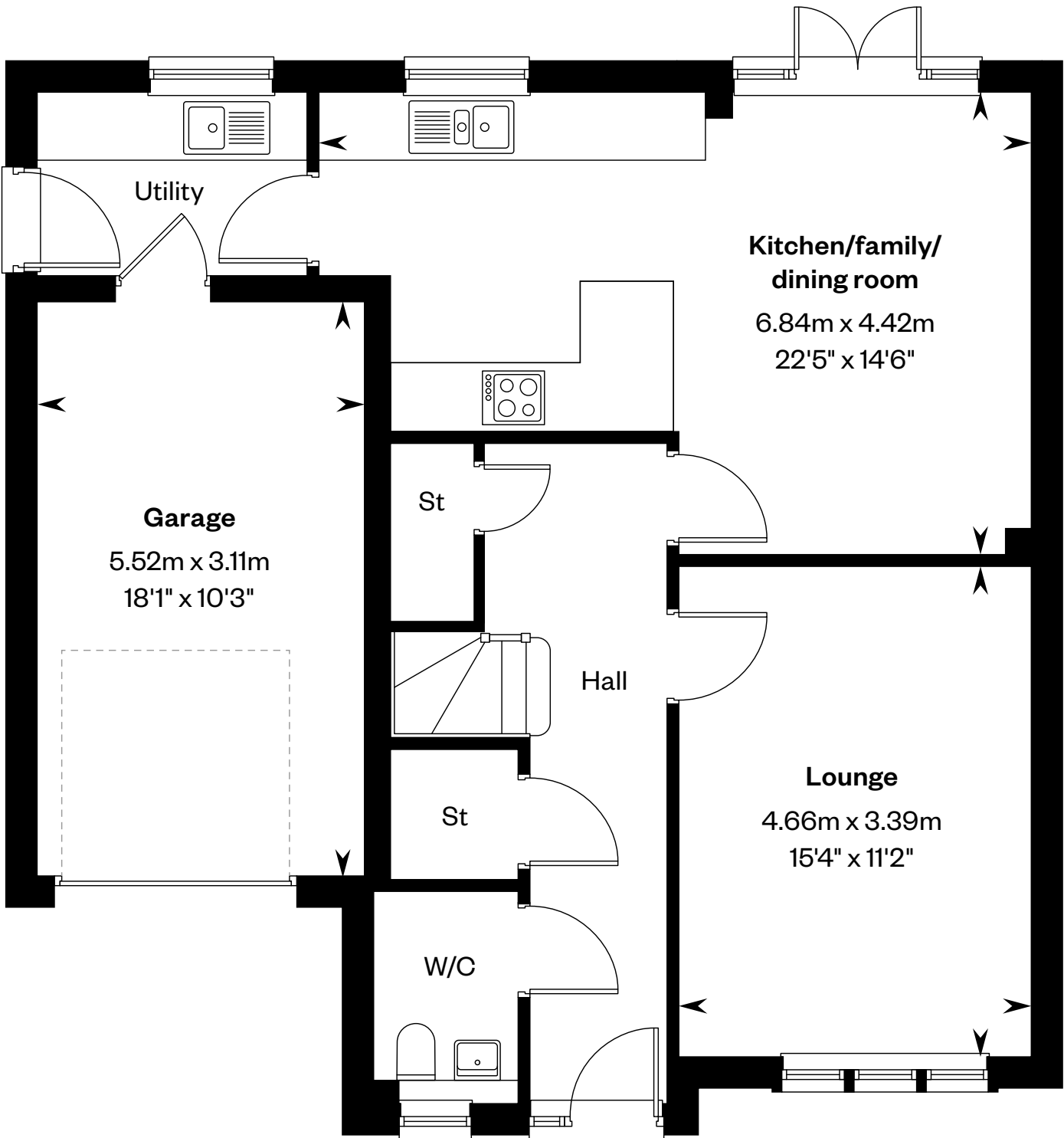
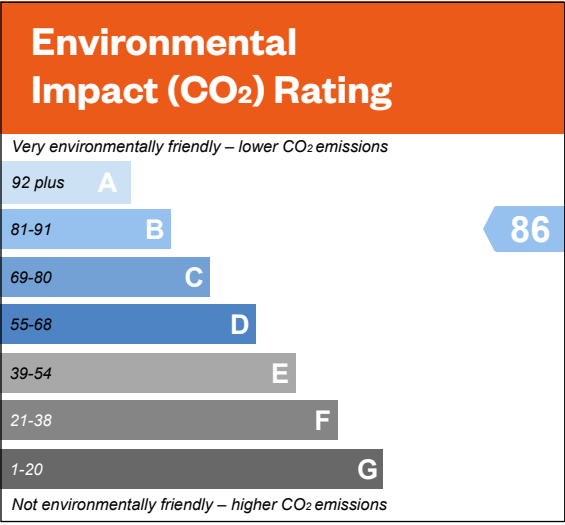
4 bedroom detached home

Plots 208, 213, 245, 256, 257, 265 & 271 – as shown

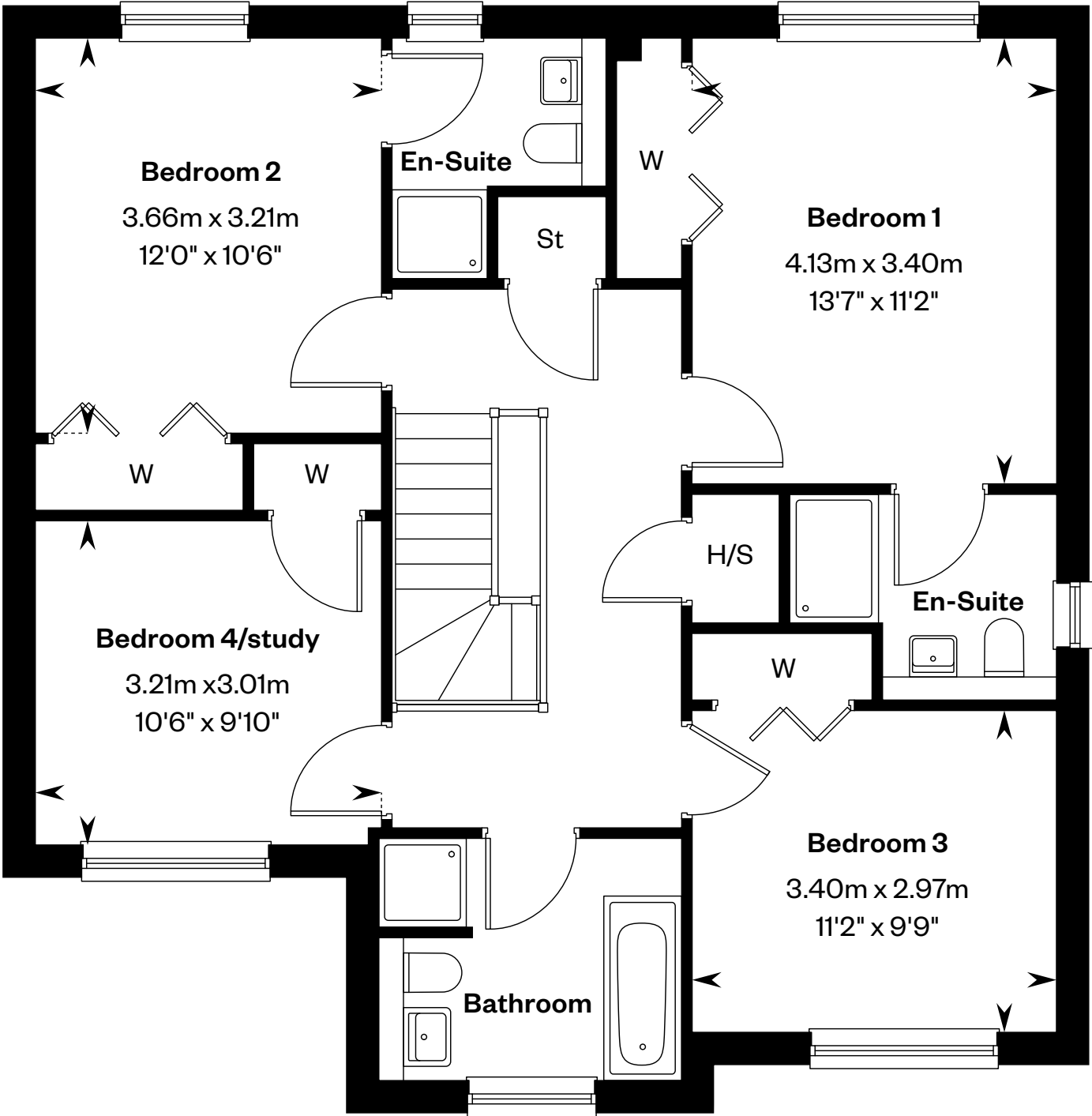
Plots 205, 235 & 240 – handed



This is a Predicted Energy Assessment for properties that are incomplete. Once the property is completed, this rating will be updated and an official Energy Performance certificate will be created for the property.



Ground floor



First floor

H/S: Heating source cupboard. St: Store cupboard. W: Wardrobe.

IMPORTANT NOTIOE TO CUSTOMERS: The Consumer Protection from Unfair Trading Regulations 2008. Cala Homes (North) Limited operates a policy of continual product development and the specifications outlined in this brochure are indicative only. The computer generated images and photographs do not necessarily represent the actual finishings/elevation or treatments, landscaping, furnishings and fittings at this development. Information contained is accurate at date of publication on 24.09.25. See the main brochure for the full Consumer Protection statement.



The Cairn

4 bedroom detached home



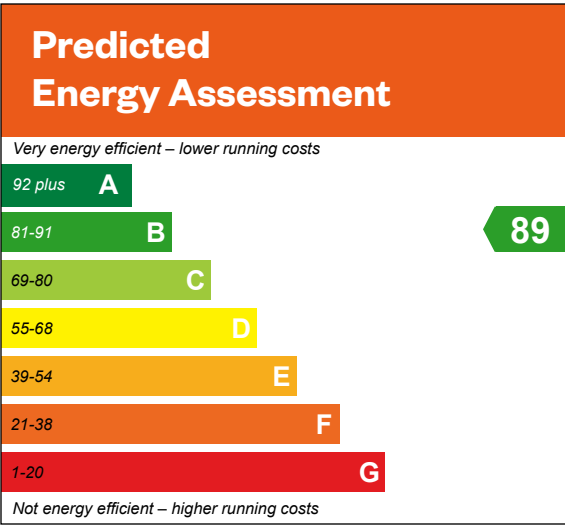
Computer Generated Image - The Cairn

The Cairn

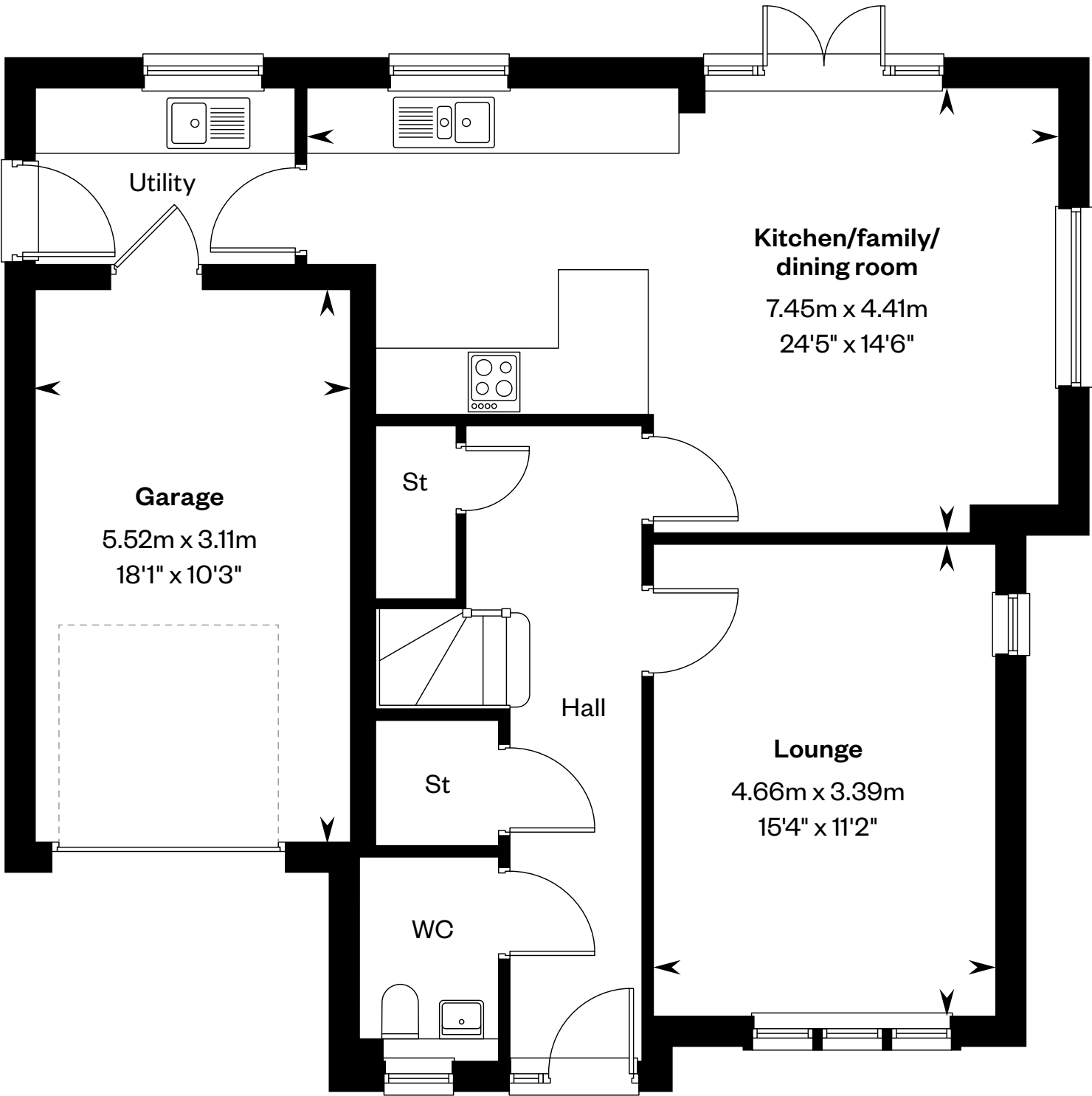
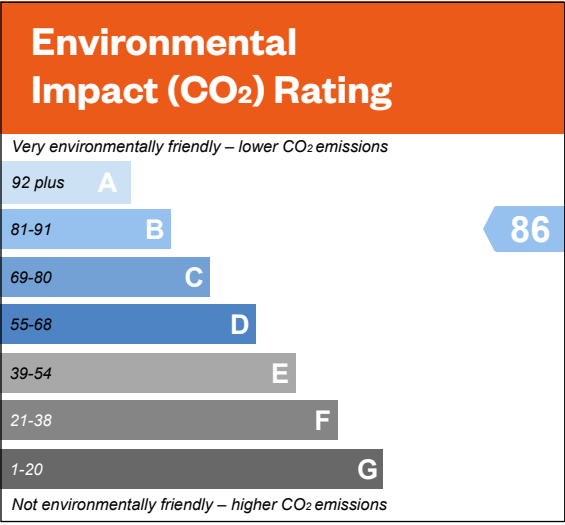
4 bedroom detached home

Plots 223 & 252 – as shown

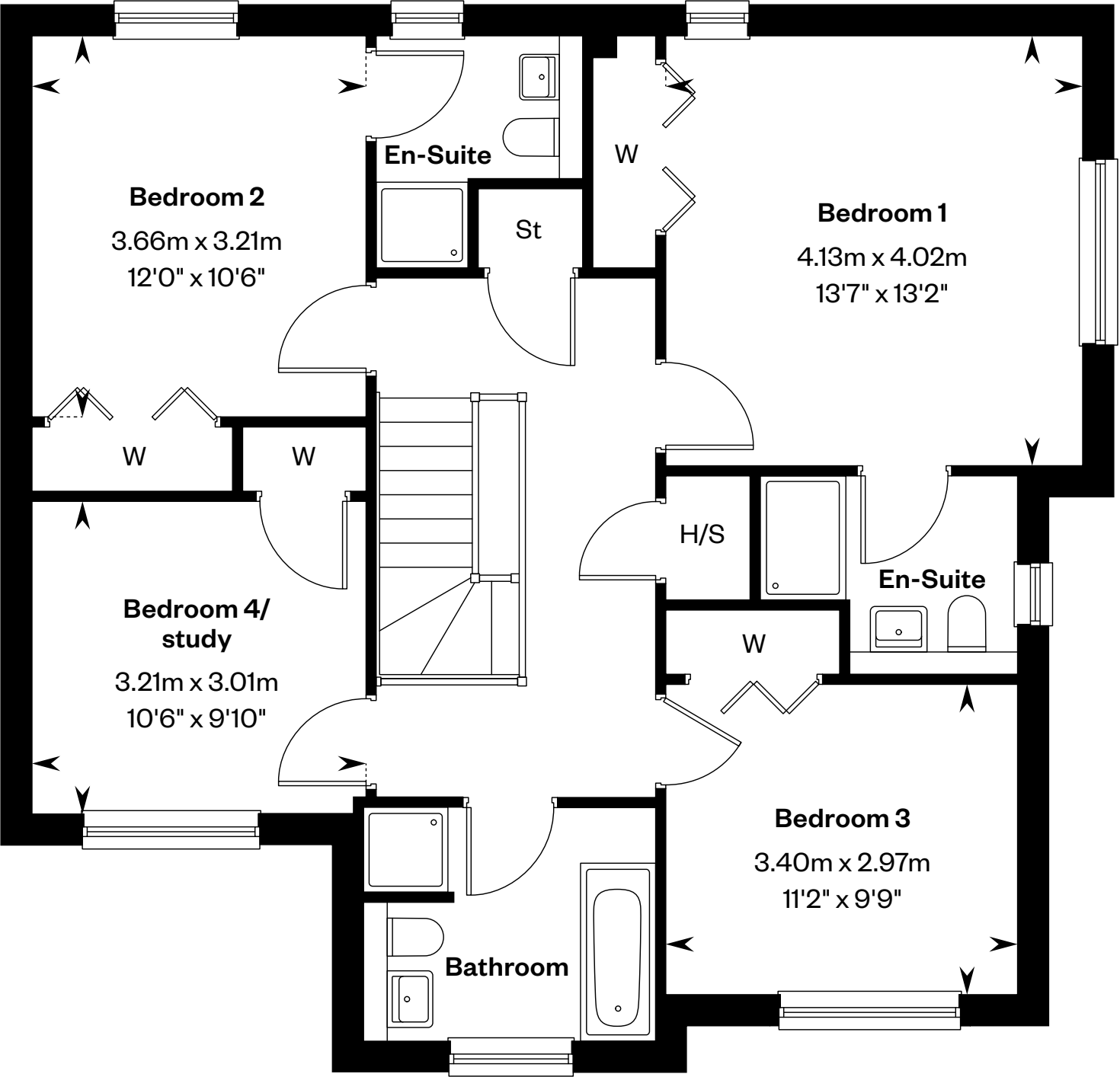
Plots 207, 217, 234 & 253 – handed



This is a Predicted Energy Assessment for properties that are incomplete. Once the property is completed, this rating will be updated and an official Energy Performance certificate will be created for the property.



Ground floor



First floor

H/S: Heating source cupboard. St: Store cupboard. W: Wardrobe.

IMPORTANT NOTIOE TO CUSTOMERS: The Consumer Protection from Unfair Trading Regulations 2008. Cala Homes (North) Limited operates a policy of continual product development and the specifications outlined in this brochure are indicative only. The computer generated images and photographs do not necessarily represent the actual finishings/elevation or treatments, landscaping, furnishings and fittings at this development. Information contained is accurate at date of publication on 24.09.25. See the main brochure for the full Consumer Protection statement.



The Colville

4 bedroom detached home with study

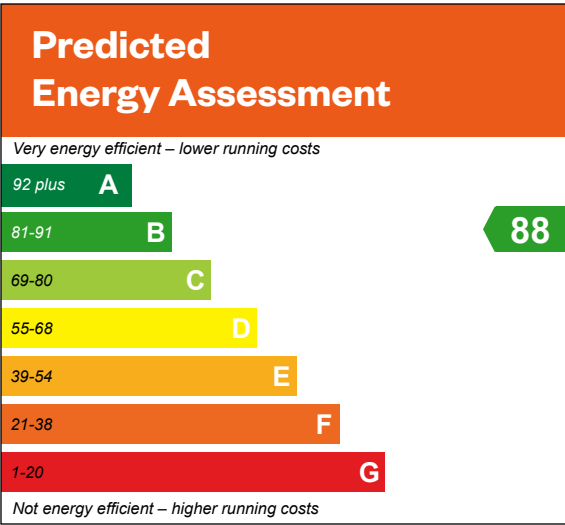


The Colville

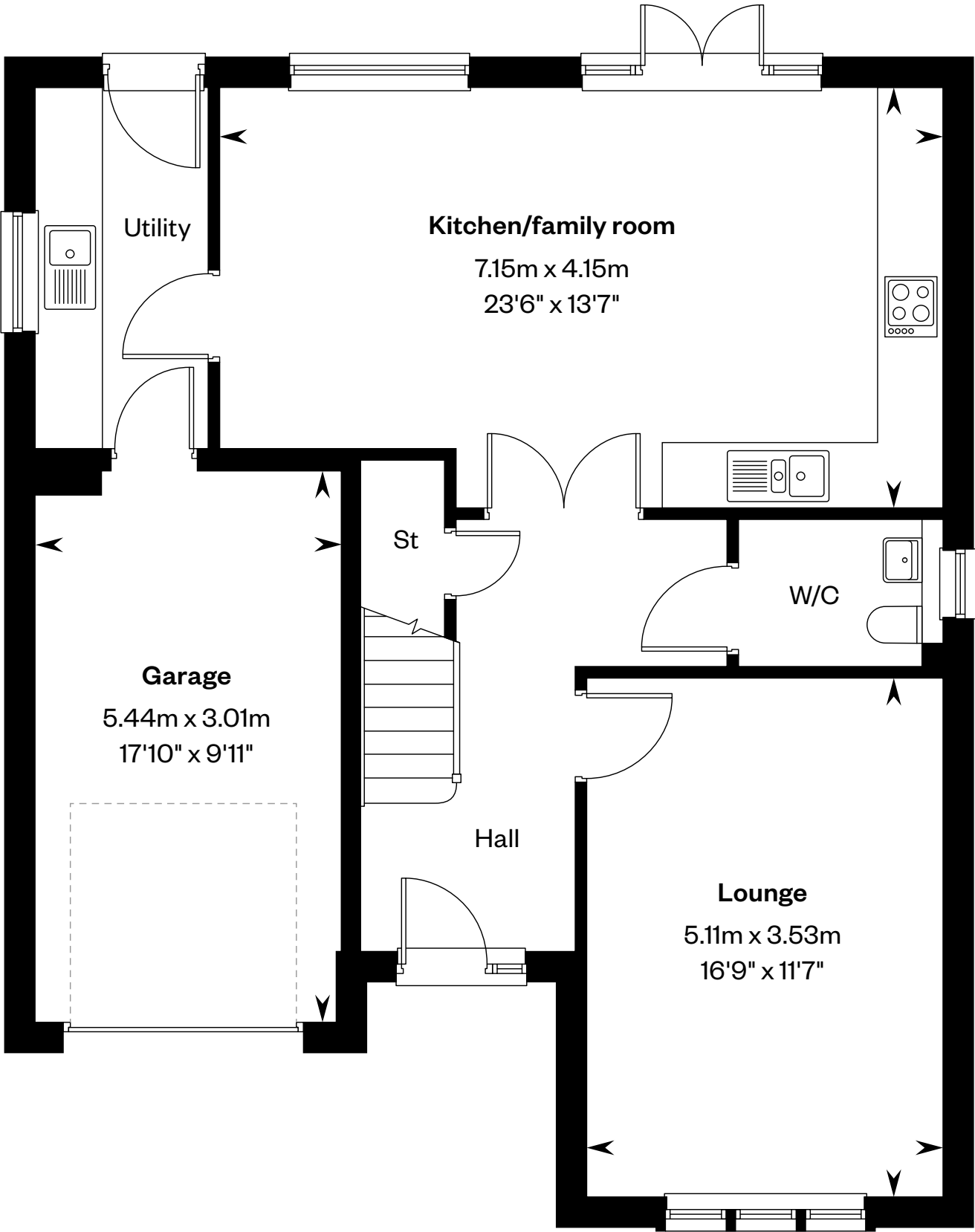
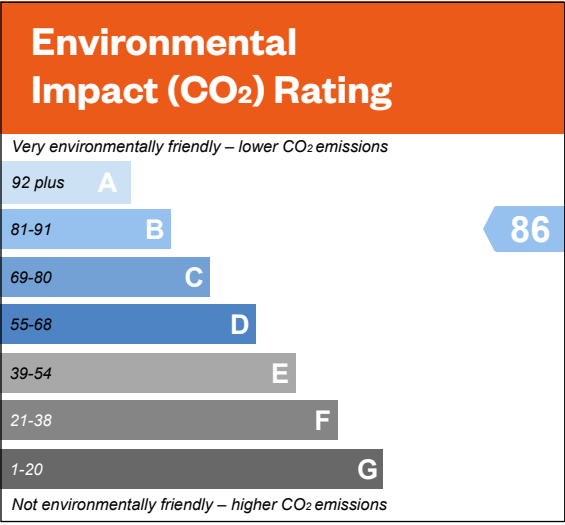
4 bedroom detached home with study

Plots 210, 212, 214, 216, 224, 225, 228, 237, 242, 244, 249, 251, 254, 259, 267 & 270 – as shown

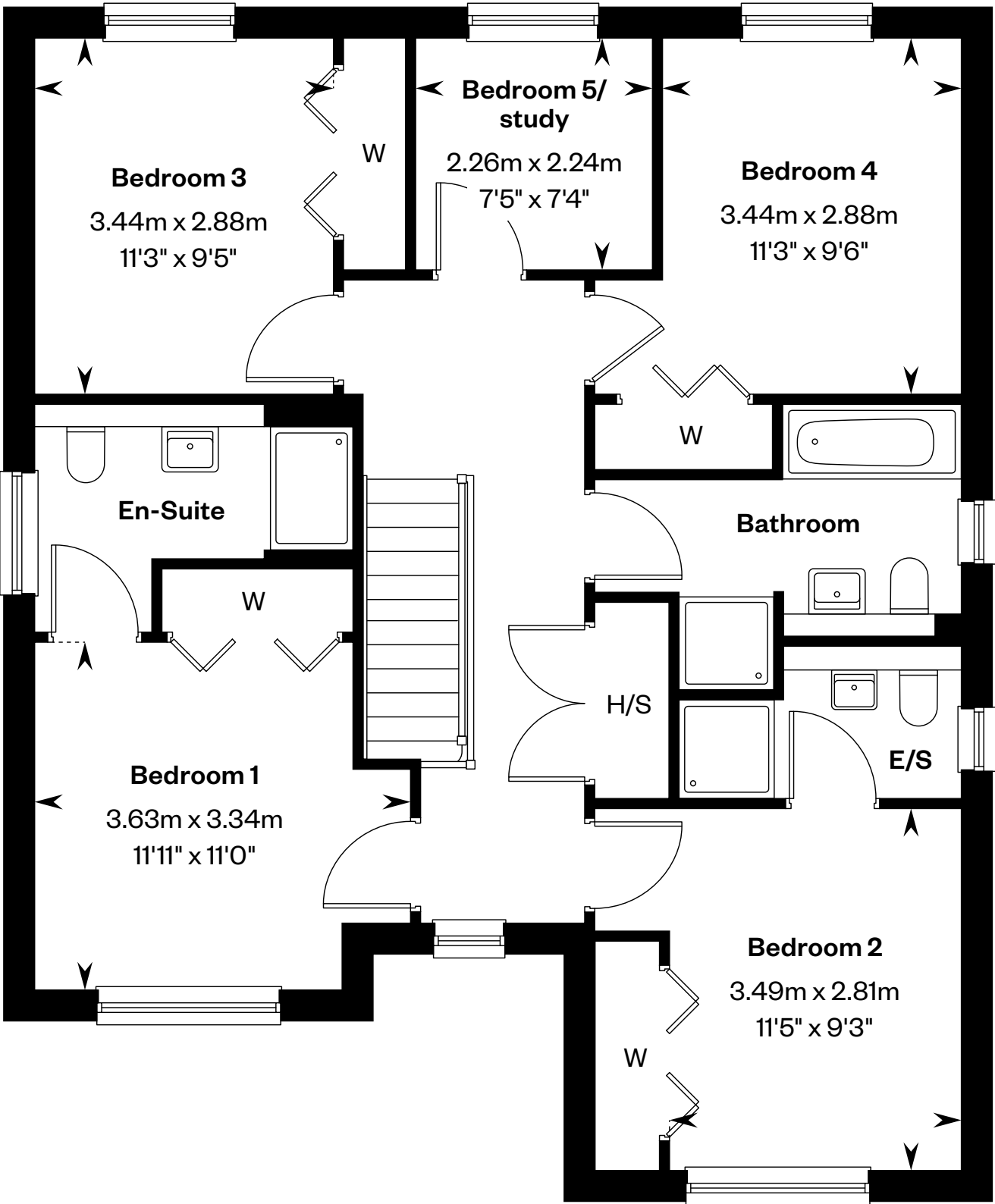
Plots 204, 206, 218, 231 & 239 – handed



This is a Predicted Energy Assessment for properties that are incomplete. Once the property is completed, this rating will be updated and an official Energy Performance certificate will be created for the property.



Ground floor



First floor

E/S: En-Suite. H/S: Heating source cupboard. St: Store cupboard. W: Wardrobe.

IMPORTANT NOTICE TO CUSTOMERS: The Consumer Protection from Unfair Trading Regulations 2008. Cala Homes (North) Limited operates a policy of continual product development and the specifications outlined in this brochure are indicative only. The computer generated images and photographs do not necessarily represent the actual finishings/elevation or treatments, landscaping, furnishings and fittings at this development. Information contained is accurate at date of publication on 24.09.25. See the main brochure for the full Consumer Protection statement.



The Garvie

5 bedroom detached home

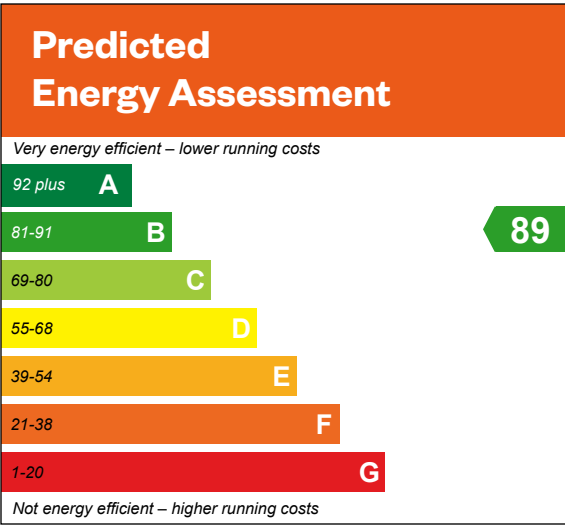


The Garvie

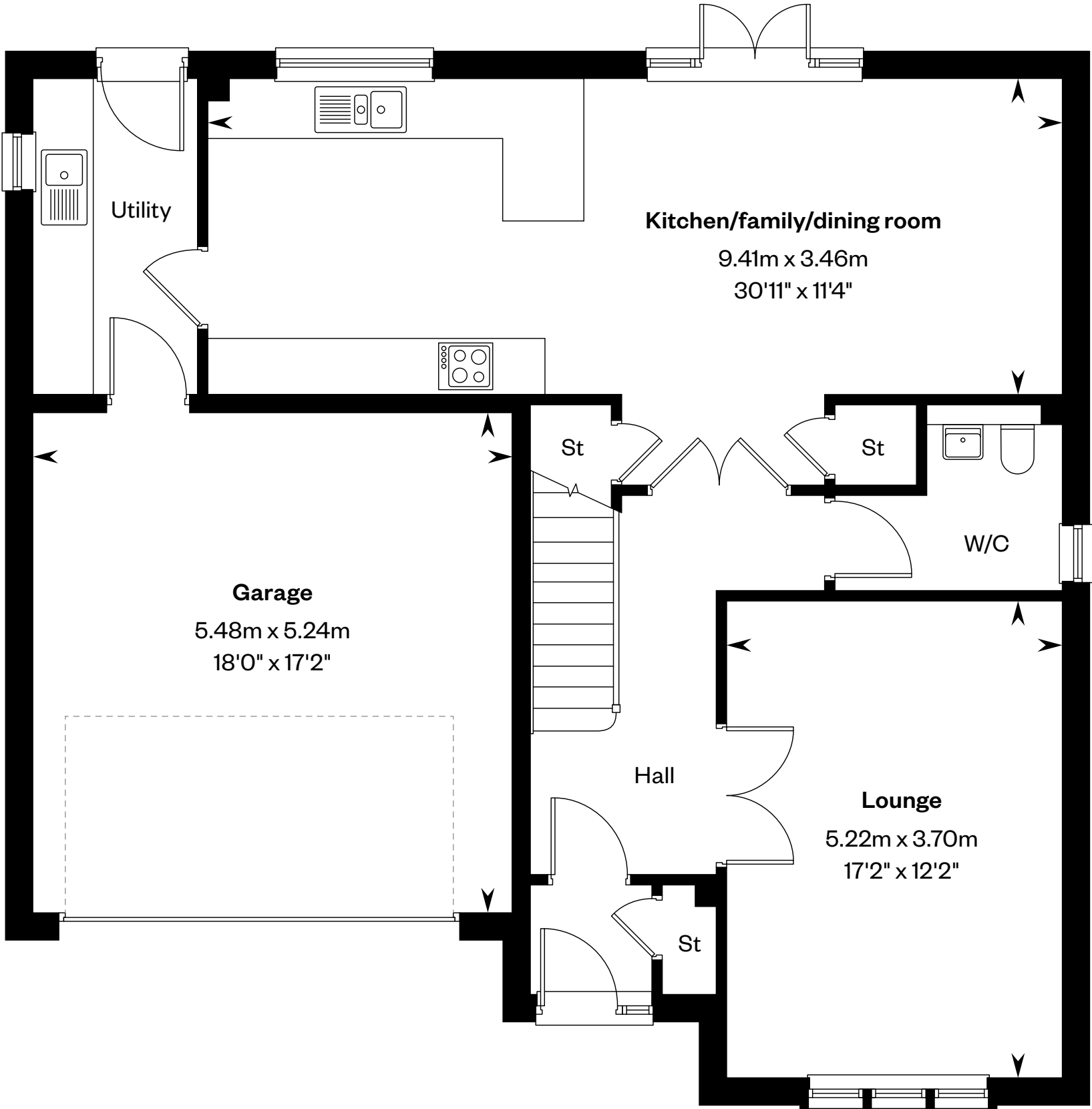
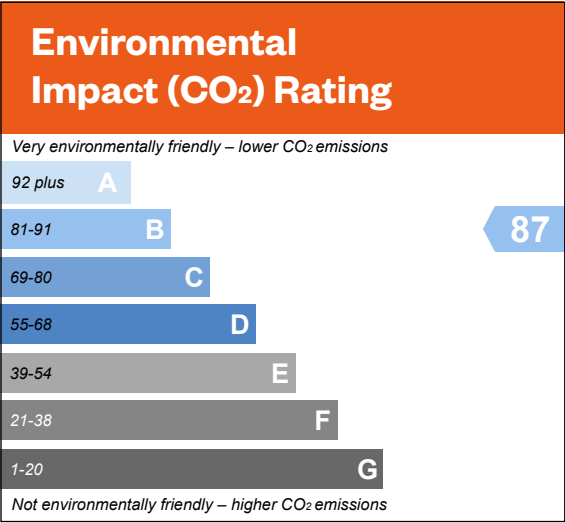
5 bedroom detached home

Plots 201, 209, 220, 221, 222, 241, 243 & 248 – as shown

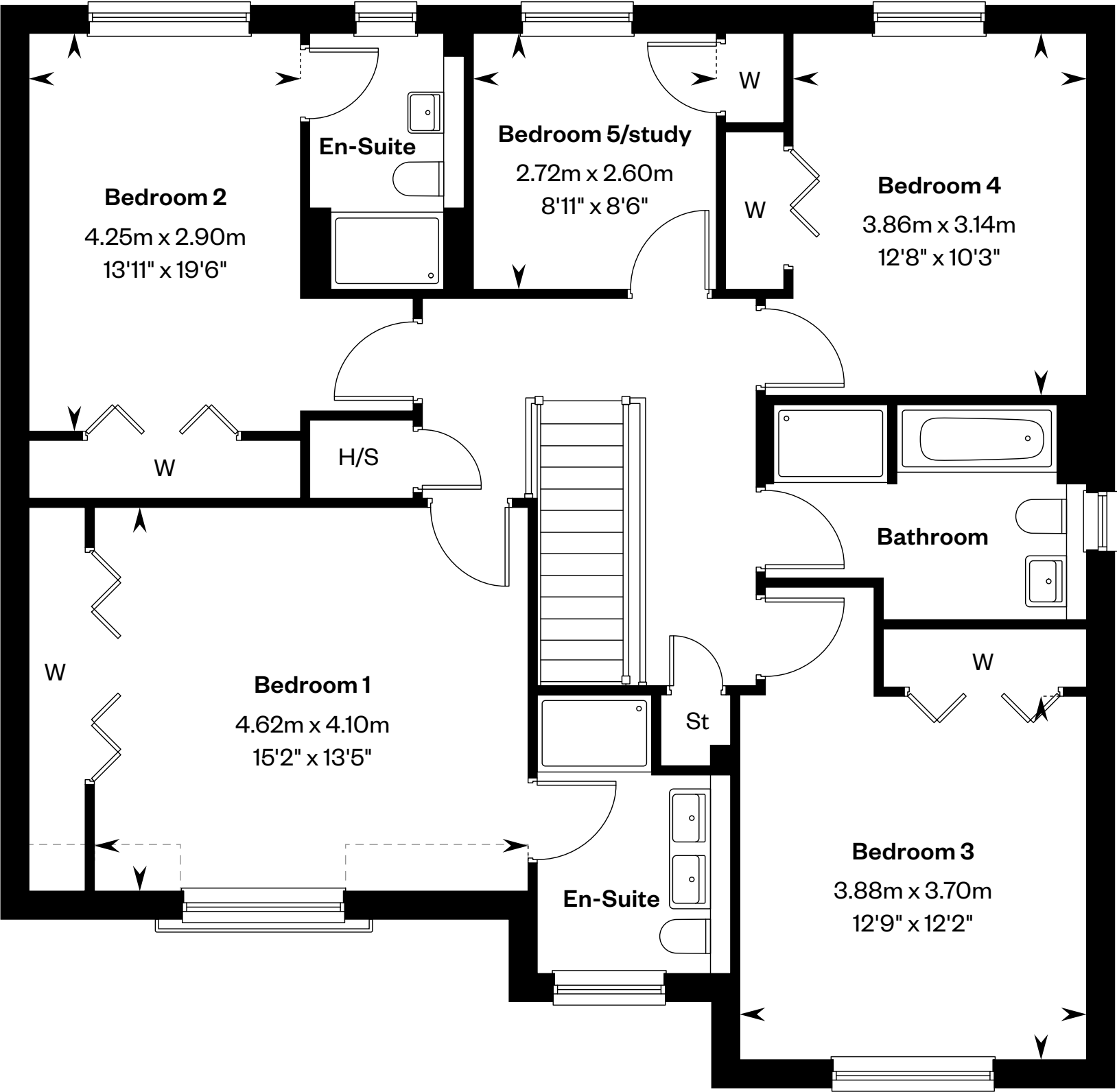
Plots 219 & 229 – handed



This is a Predicted Energy Assessment for properties that are incomplete. Once the property is completed, this rating will be updated and an official Energy Performance certificate will be created for the property.



Ground floor



First floor

H/S: Heating source cupboard. St: Store cupboard. W: Wardrobe. ----: Dotted lines denote reduced head height.

IMPORTANT NOTIOE TO CUSTOMERS: The Consumer Protection from Unfair Trading Regulations 2008. Cala Homes (North) Limited operates a policy of continual product development and the specifications outlined in this brochure are indicative only. The computer generated images and photographs do not necessarily represent the actual finishings/elevation or treatments, landscaping, furnishings and fittings at this development. Information contained is accurate at date of publication on 24.09.25. See the main brochure for the full Consumer Protection statement.