



Edmund Park

Kings Langley

Preview information



Stock photography



Exceptional homes in an enviable location

Discover Edmund Park in Kings Langley – where countryside charm meets modern living.

Just minutes from the M25 and with direct rail links to London in around 25 minutes, this sought-after Hertfordshire village is loved for its Chiltern countryside, vibrant high street and excellent schools.

Edmund Park is an exclusive collection of stylish 3 & 4 bedroom houses and 1, 2 & 3 bedroom apartments, set along the Grand Union Canal. Enjoy beautifully landscaped grounds featuring a canal-side park, play areas, and a welcoming community hub – all within walking distance of boutique shops and restaurants.

So, if you're seeking the best of all worlds, including well connected countryside charm and a beautiful low maintenance new home, Edmund Park has it all.



Edmund Park

Proposed first releases

-  **The Finch**
3 bedroom terraced or semi-detached home
-  **The Hawthorn**
4 bedroom semi-detached home
-  **The Larch**
4 bedroom detached home
-  **The Lavender**
4 bedroom detached or semi-detached home
-  **The Twinberry**
4 bedroom detached home
-  **Shared Ownership**



Subject to approval
Some details may be subject to change
CALA

SS: Sub station.

IMPORTANT NOTICE TO CUSTOMERS: The Consumer Protection from Unfair Trading Regulations 2008. CALA Homes (Chiltern) Limited operates a policy of continual product development and the site layout shown in this brochure insert is indicative only. Information contained is accurate at date of publication on 23.12.25. See the main brochure for the full Consumer Protection statement.

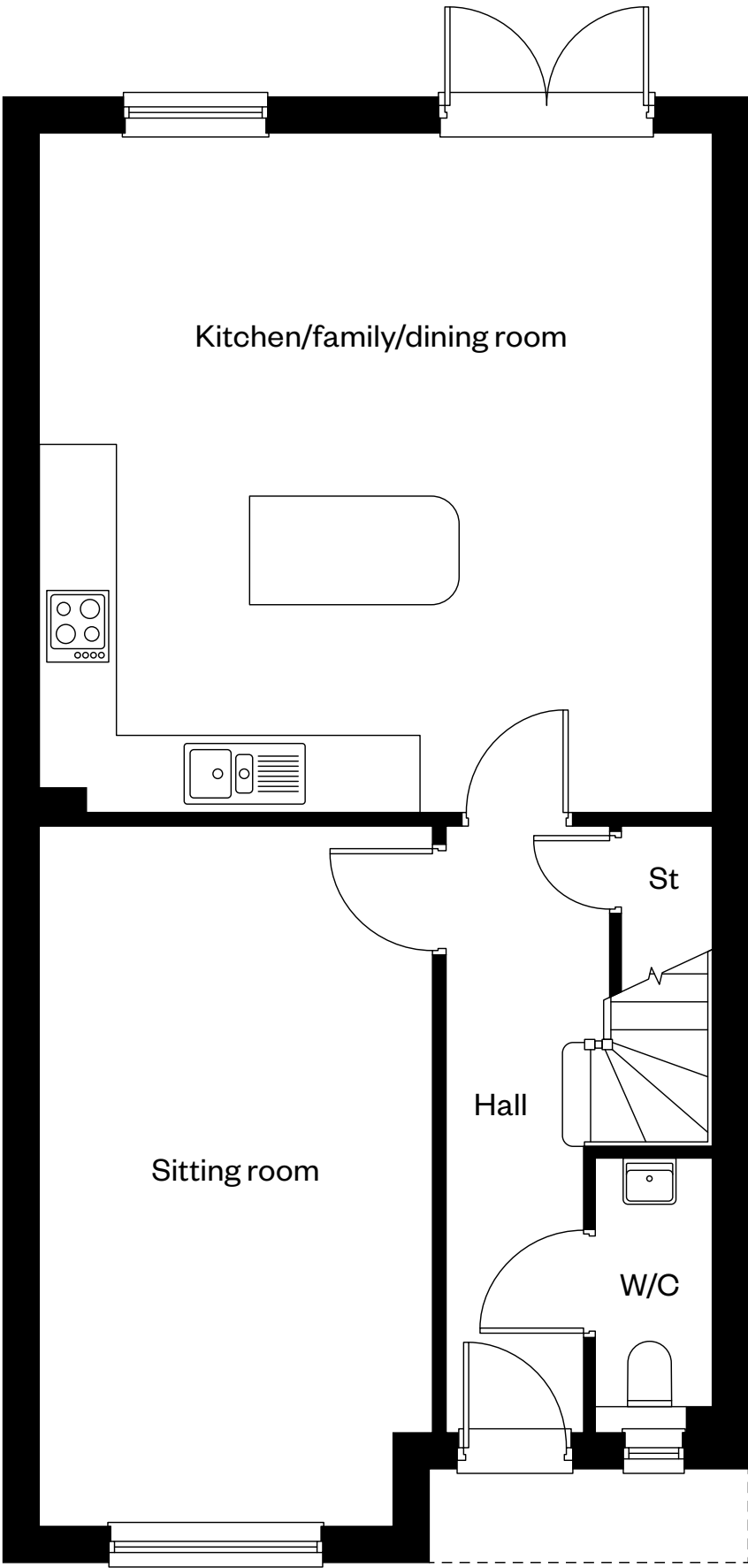
The Finch

3 bedroom semi-detached / terraced home

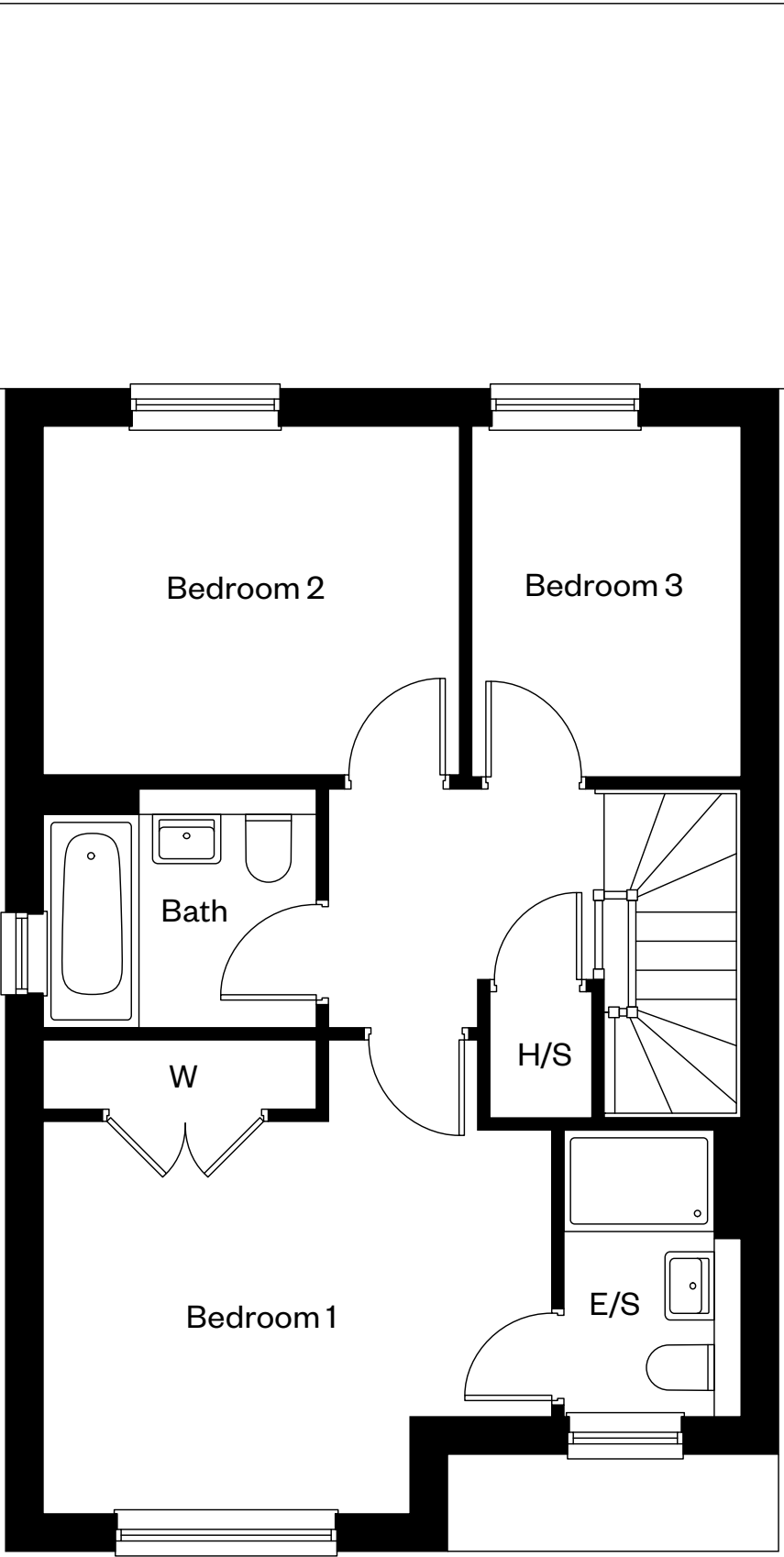
Subject
to
approval

Some details
may be subject
to change

CALA



Ground floor



First floor

E/S: En-Suite. H/S: Heating source cupboard. St: Store cupboard. W: Wardrobe.

IMPORTANT NOTIOE TO CUSTOMERS: The Consumer Protection from Unfair Trading Regulations 2008. Cala Homes (Chiltern) Limited operates a policy of continual product development and the specifications outlined in this brochure are indicative only. The computer generated images and photographs do not necessarily represent the actual finishings/elevation or treatments, landscaping, furnishings and fittings at this development. Information contained is accurate at date of publication on 23.12.25. See the main brochure for the full Consumer Protection statement.

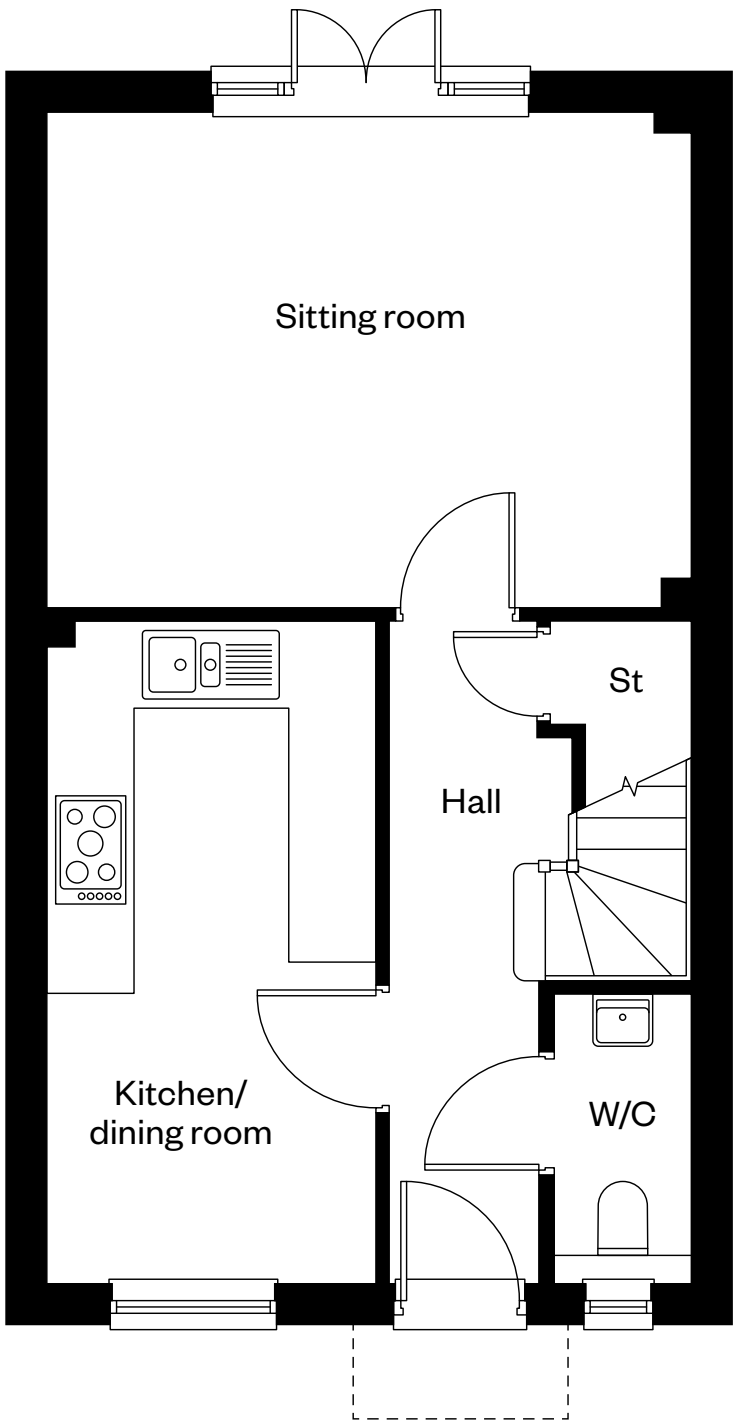
The Hawthorn

4 bedroom semi-detached home

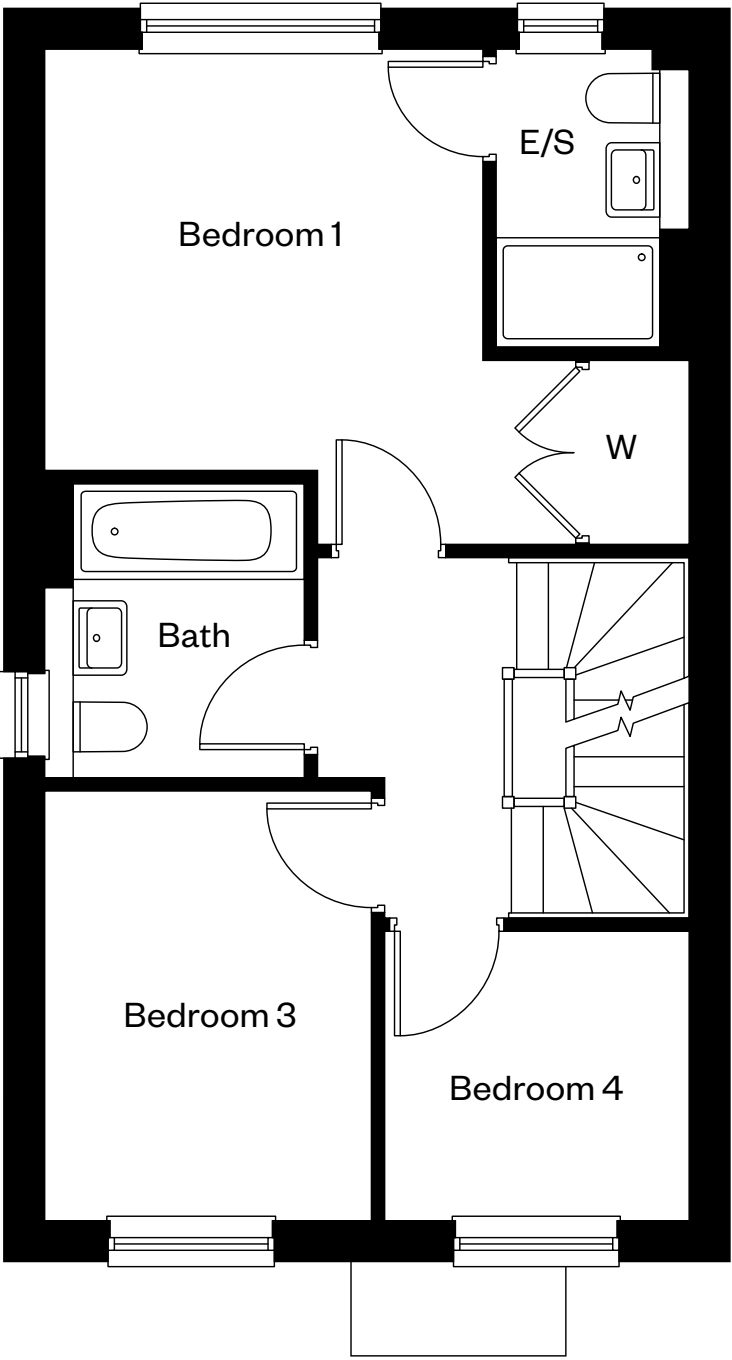
Subject
to
approval

Some details
may be subject
to change

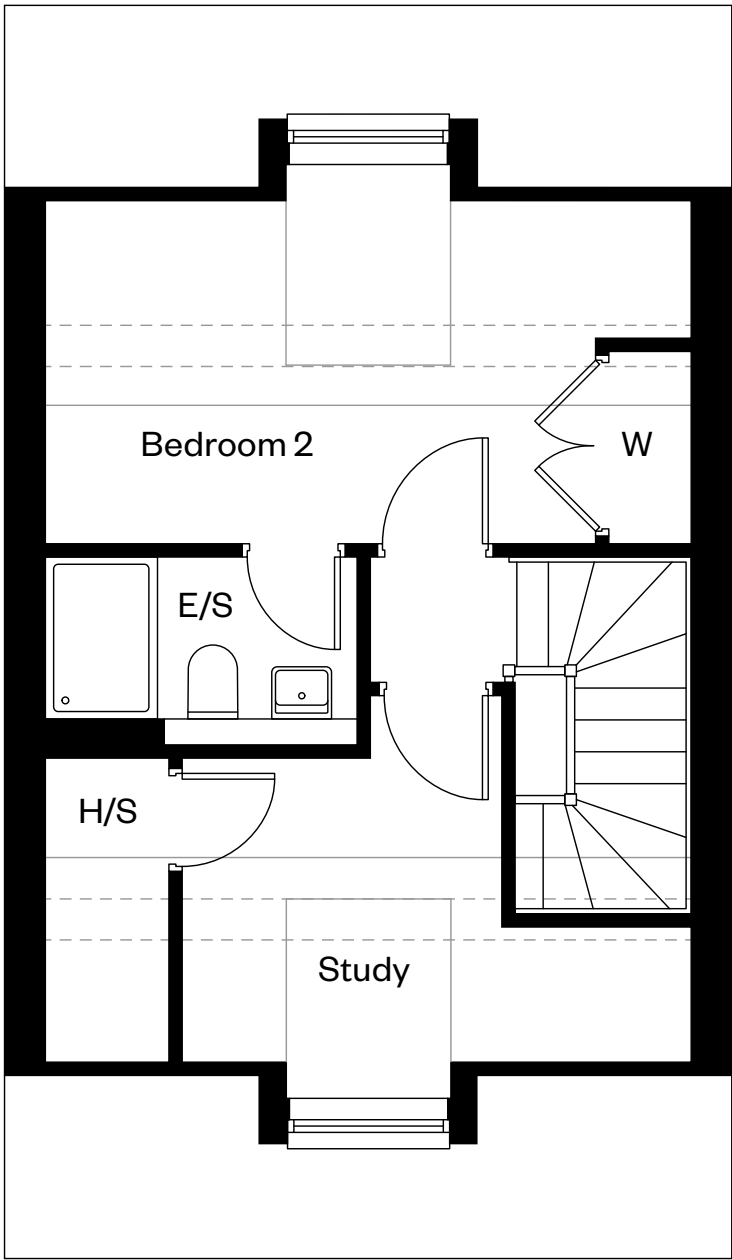
CALA



Ground floor



First floor



Second floor

E/S: En-Suite. H/S: Heating source cupboard. St: Store cupboard. W: Wardrobe. ----: Dotted lines denote reduced head height. —: Solid lines denote full head height.

IMPORTANT NOTIOE TO CUSTOMERS: The Consumer Protection from Unfair Trading Regulations 2008. Cala Homes (Chiltern) Limited operates a policy of continual product development and the specifications outlined in this brochure are indicative only. The computer generated images and photographs do not necessarily represent the actual finishings/elevation or treatments, landscaping, furnishings and fittings at this development. Information contained is accurate at date of publication on 23.12.25. See the main brochure for the full Consumer Protection statement.

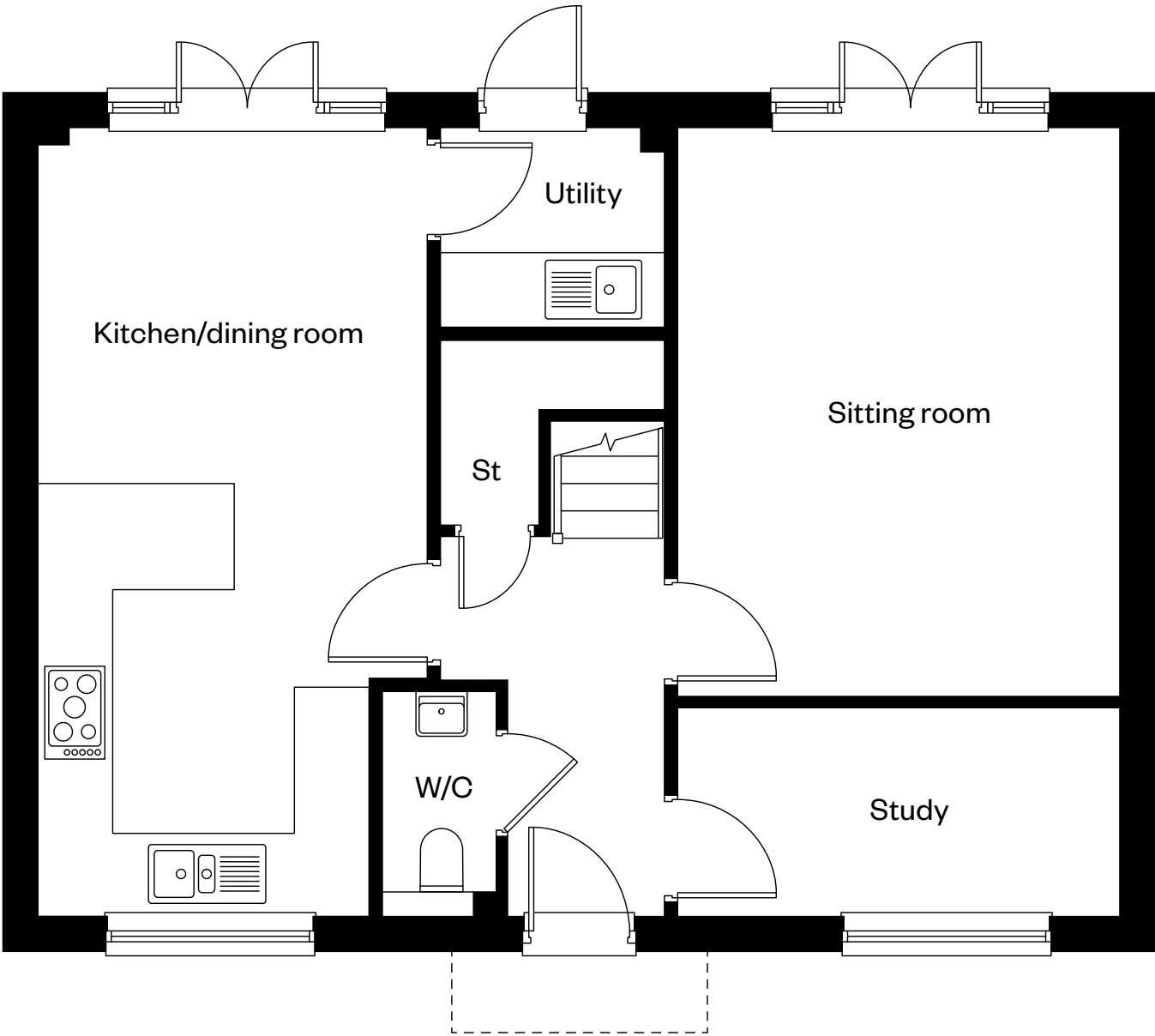
The Larch

4 bedroom detached home

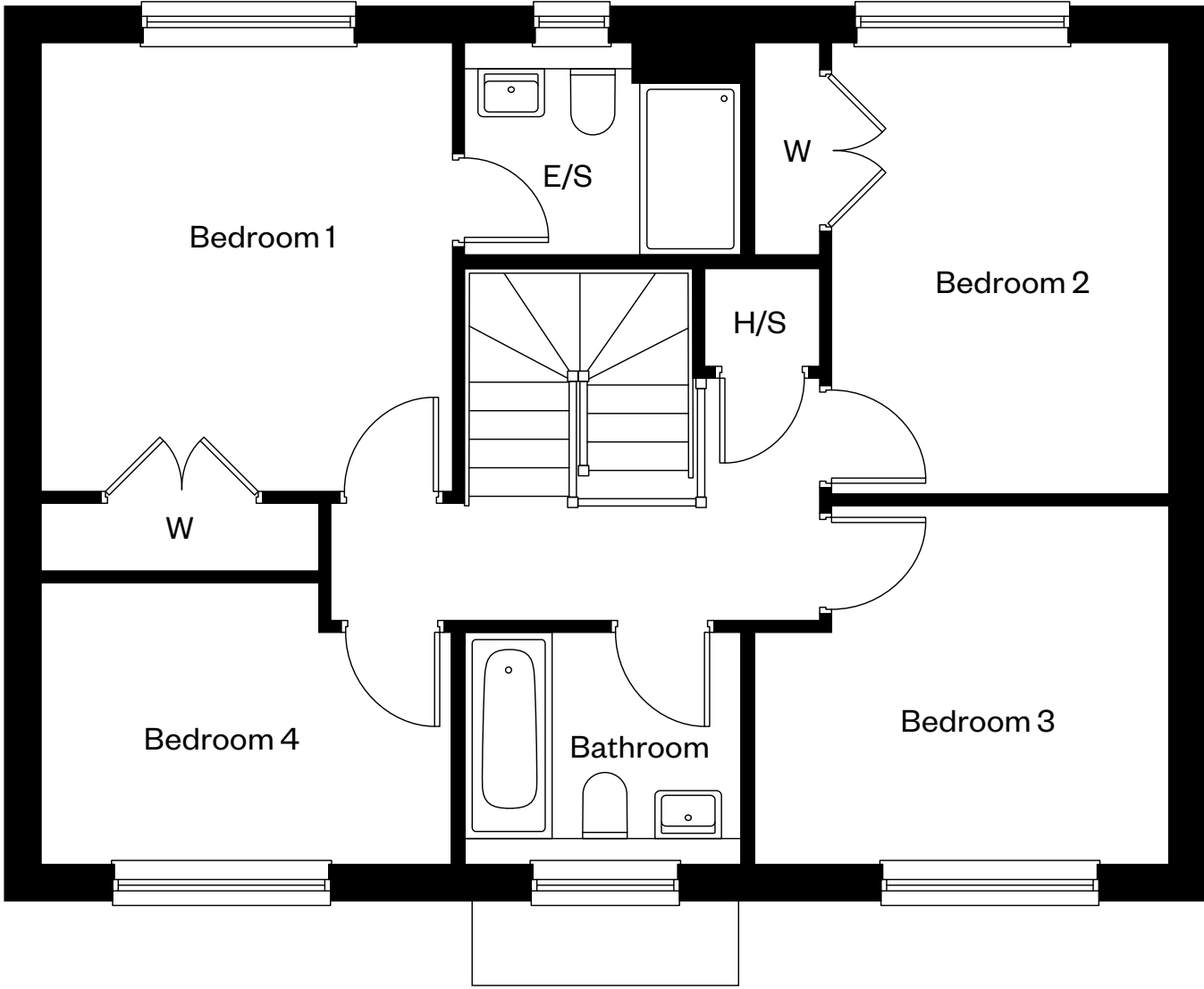
Subject
to
approval

Some details
may be subject
to change

CALA



Ground floor



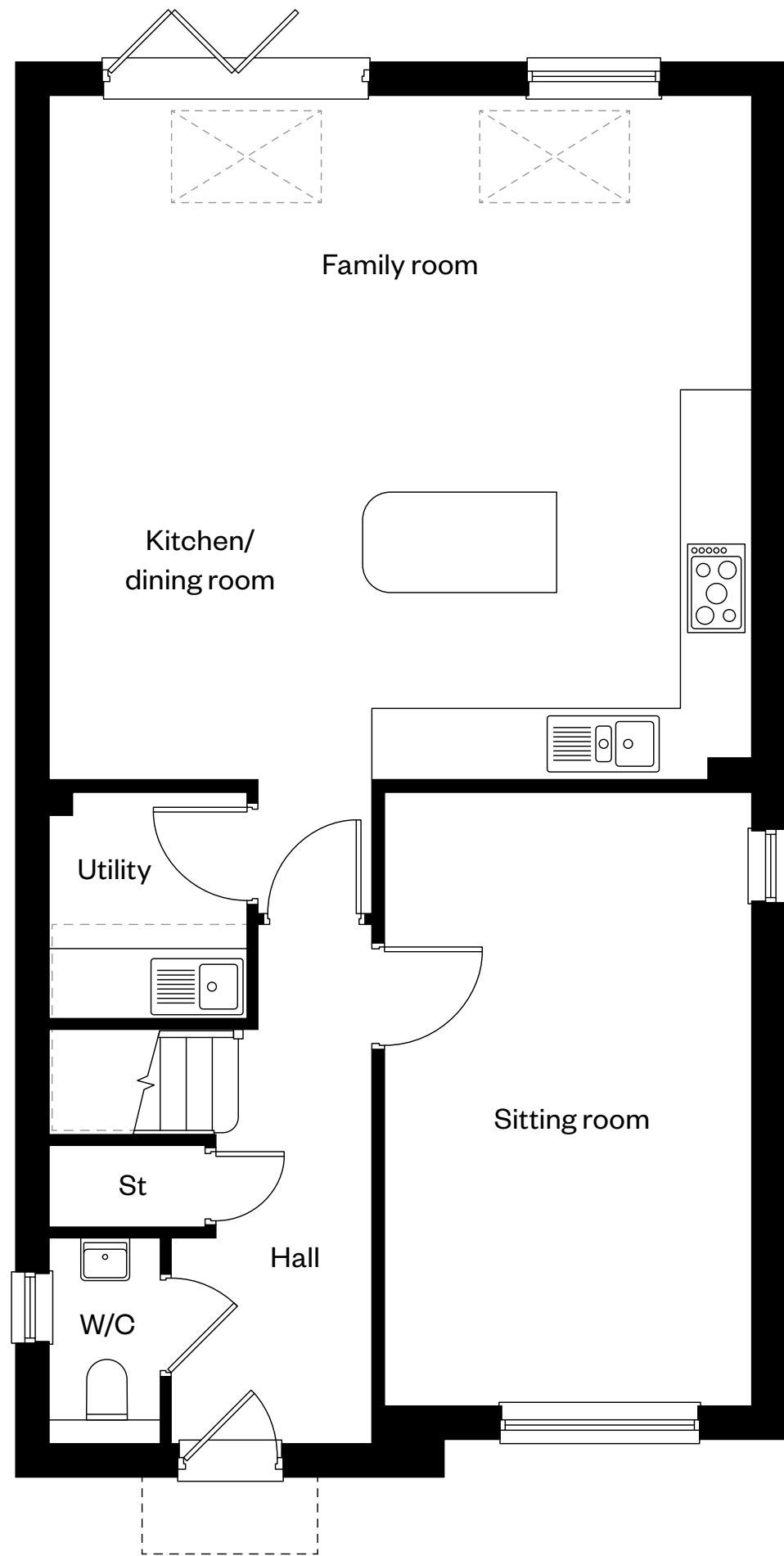
First floor

E/S: En-Suite. H/S: Heating source cupboard. St: Store cupboard. W: Wardrobe.

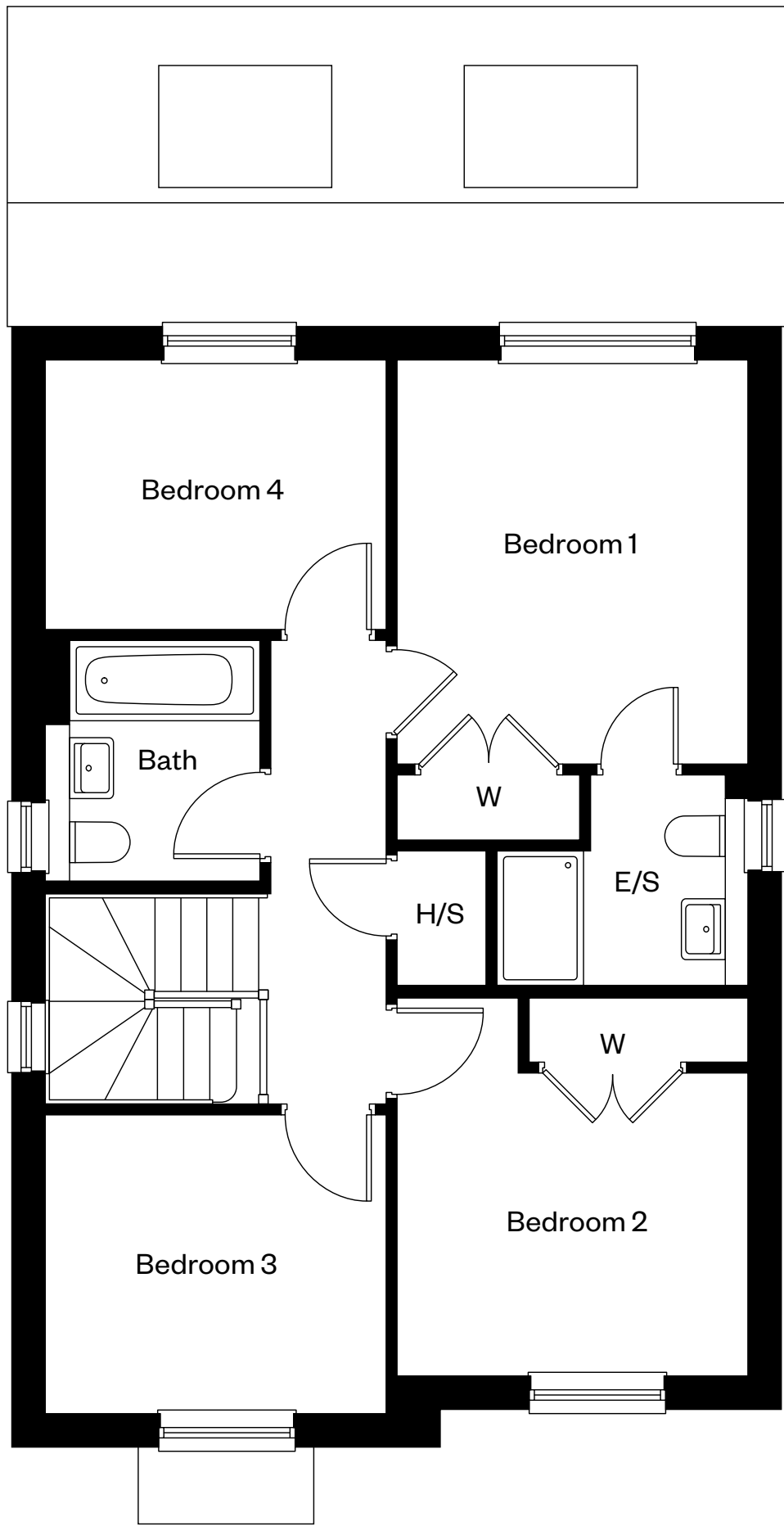
IMPORTANT NOTIOE TO CUSTOMERS: The Consumer Protection from Unfair Trading Regulations 2008. Cala Homes (Chiltern) Limited operates a policy of continual product development and the specifications outlined in this brochure are indicative only. The computer generated images and photographs do not necessarily represent the actual finishings/elevation or treatments, landscaping, furnishings and fittings at this development. Information contained is accurate at date of publication on 23.12.25. See the main brochure for the full Consumer Protection statement.

The Lavender


4 bedroom detached / semi-detached home



Ground floor



First floor

E/S: En-Suite. H/S: Heating source cupboard. St: Store cupboard. W: Wardrobe. : Roof light/velux window. - - -: Dotted lines denote reduced head height.

IMPORTANT NOTIOE TO CUSTOMERS: The Consumer Protection from Unfair Trading Regulations 2008. Cala Homes (Chiltern) Limited operates a policy of continual product development and the specifications outlined in this brochure are indicative only. The computer generated images and photographs do not necessarily represent the actual finishings/elevation or treatments, landscaping, furnishings and fittings at this development. Information contained is accurate at date of publication on 23.12.25. See the main brochure for the full Consumer Protection statement.

Subject
to
approval

Some details
may be subject
to change

CALA

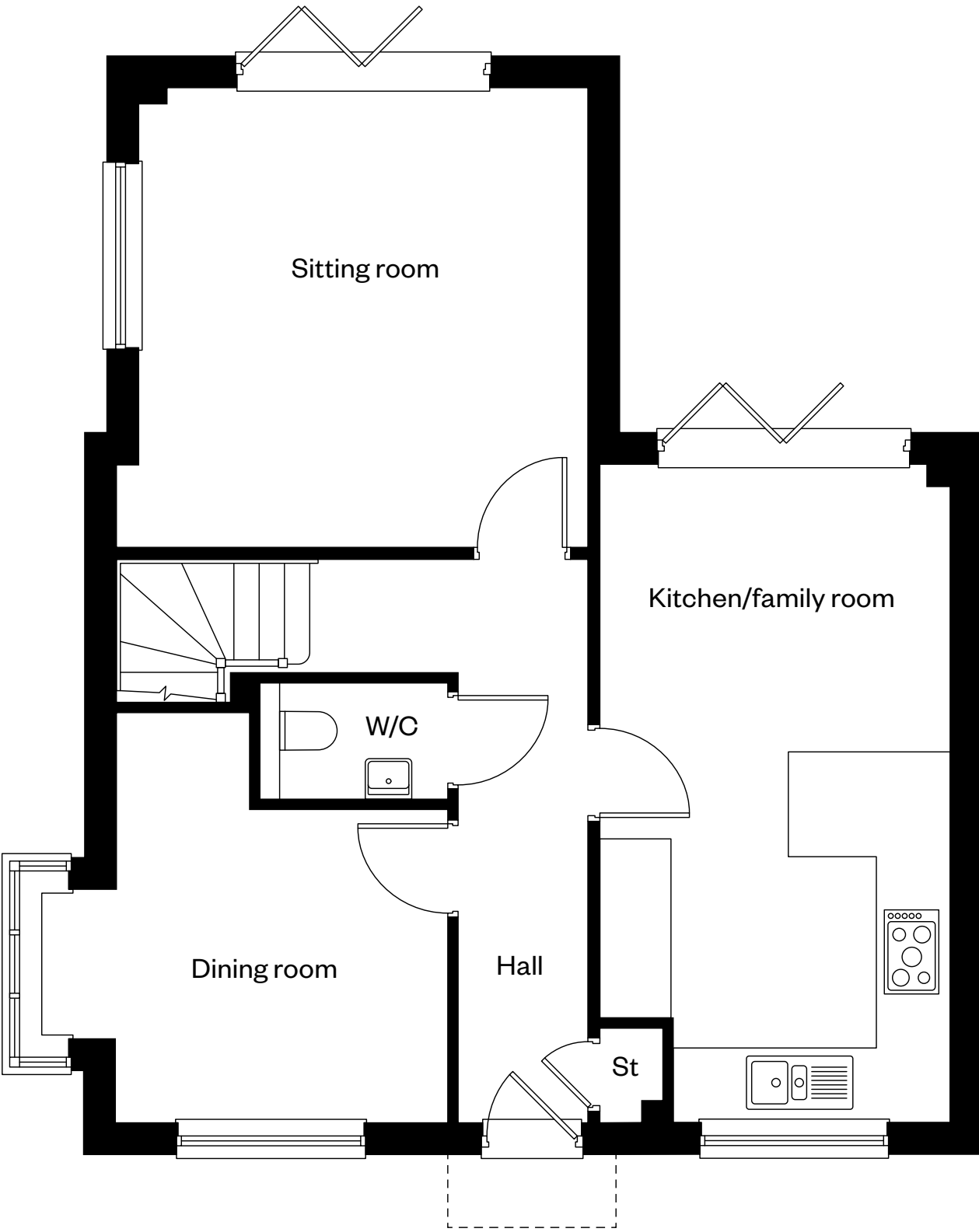
The Twinberry

4 bedroom detached home

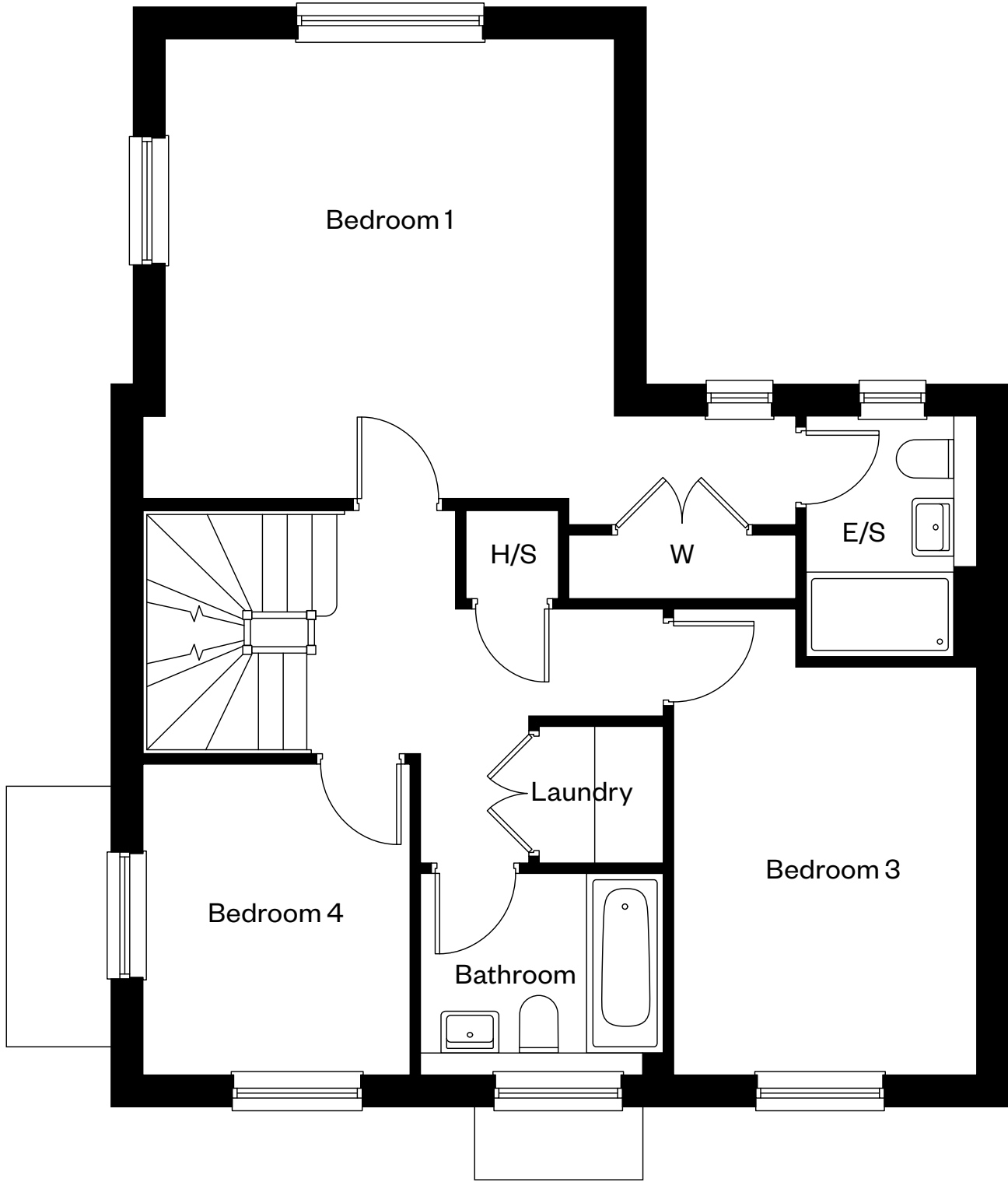
Subject
to
approval

Some details
may be subject
to change

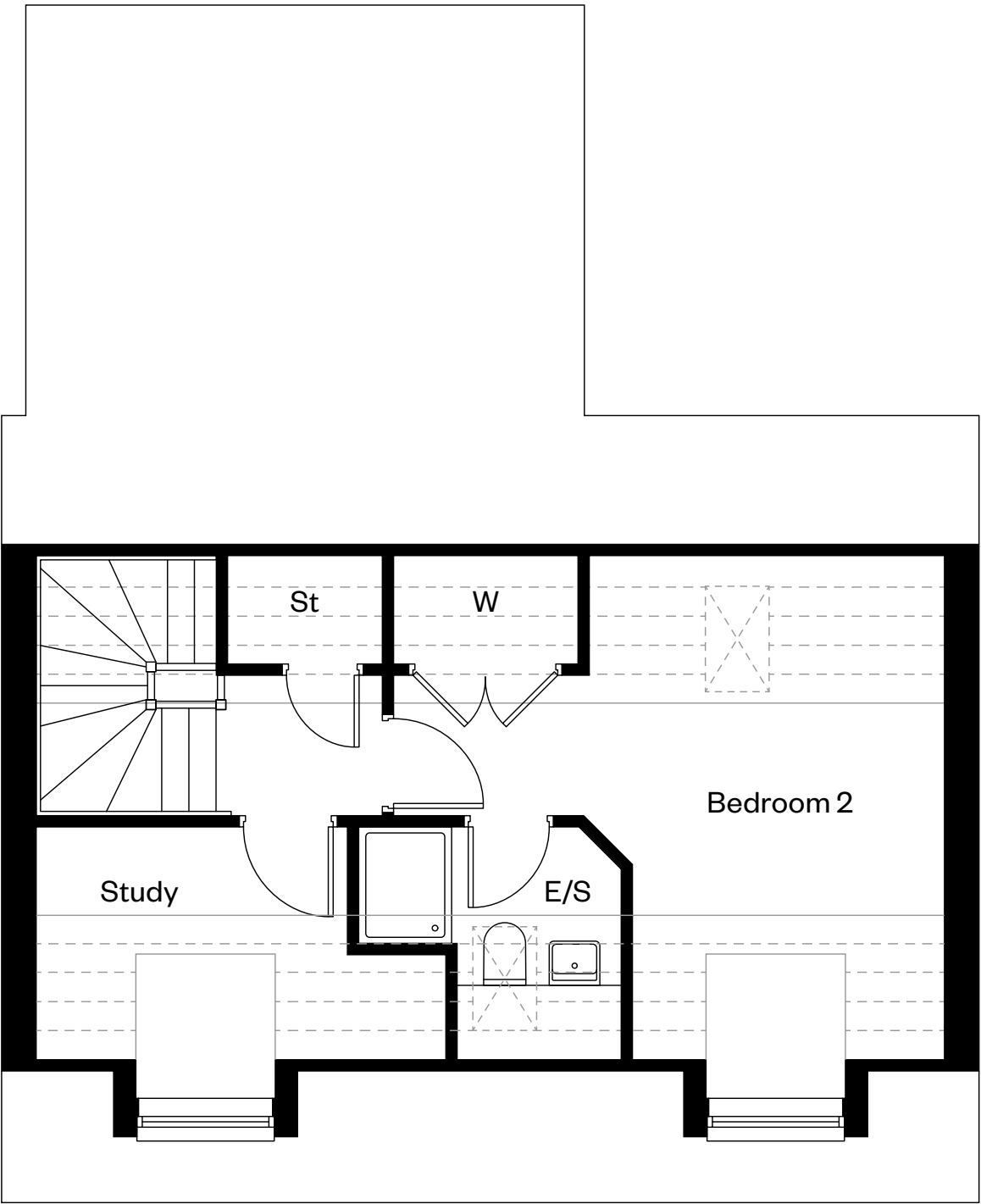
CALA



Ground floor



First floor



Second floor

E/S: En-Suite. H/S: Heating source cupboard. St: Store cupboard. W: Wardrobe. : Roof light/velux window. - - - -: Dotted lines denote reduced head height.

IMPORTANT NOTIOE TO CUSTOMERS: The Consumer Protection from Unfair Trading Regulations 2008. Cala Homes (Chiltern) Limited operates a policy of continual product development and the specifications outlined in this brochure are indicative only. The computer generated images and photographs do not necessarily represent the actual finishings/elevation or treatments, landscaping, furnishings and fittings at this development. Information contained is accurate at date of publication on 23.12.25. See the main brochure for the full Consumer Protection statement.



Stock photography



Your dream home awaits

Edmund Park,
Hempstead Road,
Kings Langley, WD4 8HT

For more information contact
edmundpark@cala.co.uk



IMPORTANT NOTICE TO CUSTOMERS: The Consumer Protection from Unfair Trading Regulations 2008. Cala Homes (Chiltern) Limited operates a policy of continual product development and the specifications outlined in this brochure are indicative only. We reserve the right to implement minor changes to the sizes and specifications shown on any plans or drawings in this brochure without warning. Where alterations to the design, construction or materials to be used in the construction of the property would materially alter the internal floor space, appearance or market value of the property, we will ensure that these changes are communicated to potential purchasers. Whilst these particulars are prepared with all due care for the convenience of intending purchasers, the information is intended as a guide. The computer generated images and photographs do not necessarily represent the actual finishings/elevation or treatments, landscaping, furnishings and fittings at this development. Floor plans, dimensions and specifications are correct at the time of publication. The illustrated location map is a general guide only. Please note that distances and timings referred to in this brochure are approximate and sourced from Google Maps. For information relating to weather in the area of this development, please refer to the Meteorological Office (www.metoffice.gov.uk). Nothing contained in this brochure shall constitute or form part of any contract. Information contained in this brochure is accurate at time of publication on 23.12.25. CALA Homes (Chiltern) Limited. Registered in England & Wales: 09088106. Registered Office: Boston House, Boston Drive, Bourne End, Buckinghamshire, SL8 5YS. Agent of Cala Management Limited.